



SERVICE BULLETIN

SB-10056629-9969

Bulletin Type.....: **M**
Bulletin No.....: **TS-M77**
Bulletin Name.....: **Ventilation Hose Installation**
NHTSA #.....:
Bulletin Ref.No...: **700002379**
Release Date.....: **15.07.2014**
Expiry Date.....: **15.07.2015**
Vehicle Model....: **TS35**
Flat Rate Code....: **TS-M77**
Flat Rate Time....: **30 min**

SUBJECT : Vent Hose Installation

SUMMARY : This bulletin explains the vent hose installation.

Bulletin Responsible.....: **Hakan GÖRGÜN**

Published by & Approved by... : **Süleyman Uğurses**

Welding on the Chassis

- Always disconnect the batteries (starting with the negative lead).
- Disconnect the connectors of electrical and electronic equipment (electronic control units, sensors and actuators) if they are less than 20 inches away from the chassis part to be welded or the earth terminal of the welding equipment.
- The earth terminal should never be attached to vehicle components such as engine, axles and springs. Arcing on these parts is not permitted, because of the risk of damage to bearings, springs, etc.
- The earth terminal must make good contact and be placed as close as possible to the part to be welded.
- Plastic pipes, rubber parts and parabolic springs should be well protected against welding spatter and temperatures higher than 70°.
- The contact switch must not be in the accessory or contact position. The contact key should be removed.
- Reconnect in reversed order of disconnecting. Ensure that a good earth connection is made between chassis, engine and cab.

Service bulletin expiry dates differ according to service bulletin type.

Definitions

Release Date: As of this date the bulletin is released and available on E-Doc. Modification parts can be ordered. The time period between the release date and the effective date may vary according to the procurement lead time.

Effective Date: As of this date specified amount of the total modification parts will be available on Spare Parts Stock. Modification parts can be ordered and the application can be performed. (except non-compliance and safety related campaigns, i.e. S-Type Bulletin)

Part Order Deadline: Last order date for modification parts. The part orders which will be placed after this date should be approved by Regional Coordinator.

Expiry Date: Expiration date for the application.

Bulletin Types

- **S-Type:** Application period of this bulletin is 18 months after the date of issue. S type bulletin is used for Recall Campaigns.



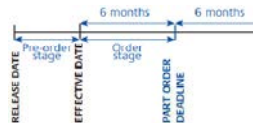
- **U-Type :** Application period of this bulletin is 12 months after the date of issue. U type bulletin is used for updates that need to be performed upon customer complaints.



- **C-Type:** Application period of this bulletin is 12 months after the date of issue. C type bulletin is generally used for supplying technical instructions or other type of information to service network.



- **M-Type:** Application period of this bulletin is 12 months after the date of issue. M type bulletin is used for updates that should be implemented without waiting for customer complaints.



Parts List

INSTALLED PARTS LIST

	PART NO	PART NAME	Qty.	UNIT OF MEASURE
1	NK213125	MANG. SIL200 Ø25X3000	59"	Inch
2	BKSG1-3220C	CLIPS, RSGU 1. 32/20 W1	2	Piece
3	TC386109Y	BOLT M6x1x20	2	Piece
4	TC398915Y	BAND CABLE	4	Piece
5	BW302504009D	CLAMP, BAND, T25-40,9mm	2	Piece

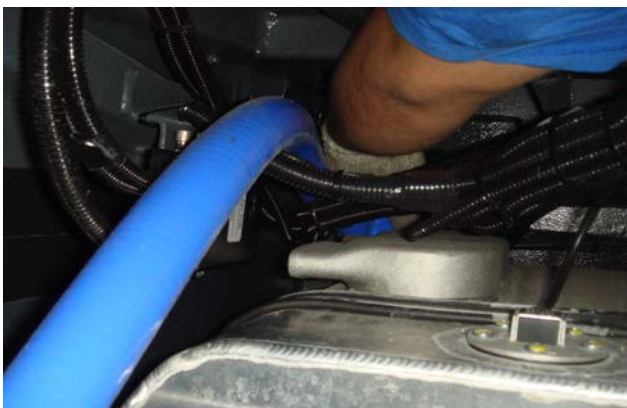
Technical Instructions



1. Open the fuel tank door to have the access the ventilation valves



2. The hose will be connected to the ventilation valve outlet on the tank



3. The hose, NK213125 will be used for this application. It will be directed as shown.

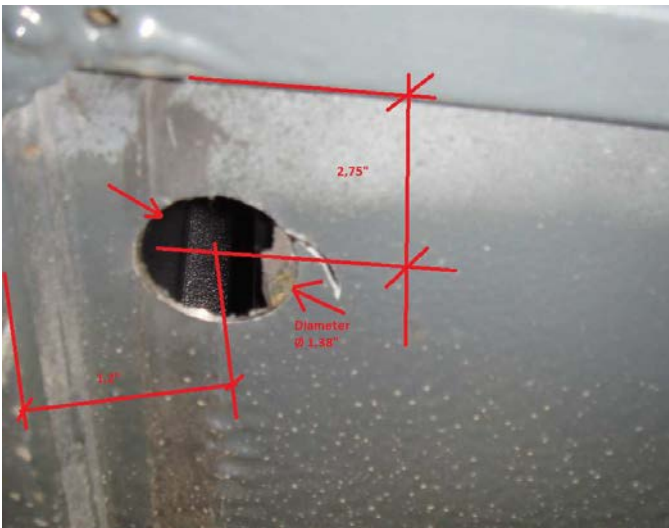
4. Note that , the hose should be routed always on the top level as much as possible.



5. Mount the to the ventilation valve outlet on the tank by using clamp (BW302504009D).



6. Hole cutting operation must be performed with the diameter 1,38".





7. Hose should be clamped to the chassis wall as shown in the pictures.





SERVICE BULLETIN

Flat Rate Break Down

APPLICATION	TIME
Vehicle Preparation	5 min
Vent Hose Installation	25 min
TOTAL	30 min.

Affected Vehicle List

1	NLTRPPN7L01010002	USA	46	NLTRPPN79A1000041	USA
2	NLTRPPN7981000003	USA	47	NLTRPPN70A1000042	USA
3	NLTRPPN7081000004	USA	48	NLTRPPN72A1000043	USA
4	NLTRPPN7091000005	USA	49	NLTRPPN74A1000044	USA
5	NLTRPPN7291000006	USA	50	NLTRPPN76A1000045	USA
6	NLTRPPN7491000007	USA	51	NLTRPPN78A1000046	USA
7	NLTRPPN7691000008	USA	52	NLTRPPN7XA1000047	USA
8	NLTRPPN7891000009	USA	53	NLTRPPN71A1000048	USA
9	NLTRPPN7491000010	USA	54	NLTRPPN7XA1000050	USA
10	NLTRPPN7691000011	USA	55	NLTRPPN71A1000051	USA
11	NLTRPPN7191000014	USA	56	NLTRPPN73A1000052	USA
12	NLTRPPN78A1000015	USA	57	NLTRPPN77A1000054	USA
13	NLTRPPN7591000016	USA	58	NLTRPPN70A1000056	USA
14	NLTRPPN7791000017	USA	59	NLTRPPN72A1000057	USA
15	NLTRPPN7891000012	USA	60	NLTRPPN74A1000058	USA
16	NLTRPPN7X91000013	USA	61	NLTRPPN78A1000063	USA
17	NLTRPPN7991000018	USA	62	NLTRPPN73A1000066	USA
18	NLTRPPN7091000019	USA	63	NLTRPPN79A1000069	USA
19	NLTRPPN77A1000023	USA	64	NLTRPPN77A1000071	USA
20	NLTRPPN7891000026	USA	65	NLTRPPN71A1000020	USA
21	NLTRPPN7X91000030	USA	66	NLTRPPN76A1000059	USA
22	NLTRPPN76A1000031	USA	67	NLTRPPN76A1000062	USA
23	NLTRPPN7391000032	USA	68	NLTRPPN7XA1000064	USA
24	NLTRPPN71A1000034	USA	69	NLTRPPN76A1000028	USA
25	NLTRPPN7991000035	USA	70	NLTRPPN72A1000060	USA
26	NLTRPPN77A1000037	USA	71	NLTRPPN7XA1000033	USA
27	NLTRPPN7491000038	USA	72	NLTRPPP71A1000001	USA
28	NLTRPPN70A1000039	USA	73	NLTRPPR73B1000001	USA
29	NLTRPPN73A1000049	USA	74	NLTRPPP73A1000002	USA
30	NLTRPPN75A1000053	USA	75	NLTRPPP75A1000003	USA
31	NLTRPPN79A1000055	USA	76	NLTRPPP77A1000004	USA
32	NLTRPPN74A1000061	USA	77	NLTRPPP79A1000005	USA
33	NLTRPPN71A1000065	USA	78	NLTRPPP70A1000006	USA
34	NLTRPPN75A1000067	USA	79	NLTRPPP72A1000007	USA
35	NLTRPPN77A1000068	USA	80	NLTRPPP74A1000008	USA
36	NLTRPPN75A1000070	USA	81	NLTRPPP76A1000009	USA
37	NLTRPPN79A1000072	USA	82	NLTRPPP72A1000010	USA
38	NLTRPPN73A1000021	USA	83	NLTRPPP74A1000011	USA
39	NLTRPPN75A1000022	USA	84	NLTRPPR75B1000002	USA
40	NLTRPPN79A1000024	USA	85	NLTRPPR77B1000003	USA
41	NLTRPPN70A1000025	USA	86	NLTRPPR79B1000004	USA
42	NLTRPPN74A1000027	USA	87	NLTRPPR70B1000005	USA
43	NLTRPPN78A1000029	USA	88	NLTRPPR72B1000006	USA
44	NLTRPPN75A1000036	USA	89	NLTRPPR74B1000007	USA
45	NLTRPPN77A1000040	USA	90	NLTRPPR76B1000008	USA

SERVICE BULLETIN

91	NLTRPPR78B1000009	USA	136	NLTRPPR73C1000033	USA
92	NLTRPPR74B1000010	USA	137	NLTRPPR75C1000034	USA
93	NLTRPPR76B1000011	USA	138	NLTRPPR77C1000035	USA
94	NLTRPPR72C1000041	USA	139	NLTRPPR79C1000036	USA
95	NLTRPPR74C1000042	USA	140	NLTRPPR70C1000037	USA
96	NLTRPPR76C1000043	USA	141	NLTRPPR72C1000038	USA
97	NLTRPPR78C1000044	USA	142	NLTRPPR74C1000039	USA
98	NLTRPPR7XC1000045	USA	143	NLTRPPR70C1000040	USA
99	NLTRPPR71C1000046	USA	144	NLTRPPR75C1000051	USA
100	NLTRPPR75C1000048	USA	145	NLTRPPR77C1000052	USA
101	NLTRPPR77C1000049	USA	146	NLTRPPR79C1000053	USA
102	NLTRPPR73C1000050	USA	147	NLTRPPR70C1000054	USA
103	NLTRPPR73C1000047	USA	148	NLTRPPR72C1000055	USA
104	NLTRPPR71C1000001	USA	149	NLTRPPR74C1000056	USA
105	NLTRPPR75C1000003	USA	150	NLTRPPR76C1000057	USA
106	NLTRPPR77C1000004	USA	151	NLTRPPR78C1000058	USA
107	NLTRPPR79C1000005	USA	152	NLTRPPR7XC1000059	USA
108	NLTRPPR70C1000006	USA	153	NLTRPPR76C1000060	USA
109	NLTRPPR72C1000007	USA	154	NLTRPPR78C1000061	USA
110	NLTRPPR74C1000008	USA	155	NLTRPPR7XC1000062	USA
111	NLTRPPR76C1000009	USA	156	NLTRPPR71C1000063	USA
112	NLTRPPR72C1000010	USA	157	NLTRPPR73C1000064	USA
113	NLTRPPR76C1000012	USA	158	NLTRPPR75C1000065	USA
114	NLTRPPR74C1000011	USA	159	NLTRPPR77C1000066	USA
115	NLTRPPR78C1000013	USA	160	NLTRPPR79C1000067	USA
116	NLTRPPR7XC1000014	USA	161	NLTRPPR70C1000068	USA
117	NLTRPPR71C1000015	USA	162	NLTRPPR72C1000069	USA
118	NLTRPPR73C1000016	USA	163	NLTRPPR79C1000070	USA
119	NLTRPPR75C1000017	USA	164	NLTRPPR70C1000071	USA
120	NLTRPPR77C1000018	USA	165	NLTRPPR72C1000072	USA
121	NLTRPPR79C1000019	USA	166	NLTRPPR74C1000073	USA
122	NLTRPPR75C1000020	USA	167	NLTRPPR76C1000074	USA
123	NLTRPPR77C1000021	USA	168	NLTRPPR78C1000075	USA
124	NLTRPPR79C1000022	USA	169	NLTRPPR7XC1000076	USA
125	NLTRPPR70C1000023	USA	170	NLTRPPR71C1000077	USA
126	NLTRPPR72C1000024	USA	171	NLTRPPR73C1000078	USA
127	NLTRPPR76C1000026	USA	172	NLTRPPR75C1000079	USA
128	NLTRPPR74C1000025	USA	173	NLTRPPR71C1000080	USA
129	NLTRPPR78C1000027	USA	174	NLTRPPR76C1000091	USA
130	NLTRPPR7XC1000028	USA	175	NLTRPPR78C1000092	USA
131	NLTRPPR71C1000029	USA	176	NLTRPPR73C1000081	USA
132	NLTRPPR78C1000030	USA	177	NLTRPPR73D1000082	USA
133	NLTRPPR73C1000002	USA	178	NLTRPPR75D1000083	USA
134	NLTRPPR7XC1000031	USA	179	NLTRPPR77D1000084	USA
135	NLTRPPR71C1000032	USA	180	NLTRPPR79D1000085	USA

SERVICE BULLETIN

181	NLTRPPR70D1000086	USA	226	NLTRPPR73D1000132	USA
182	NLTRPPR72D1000087	USA	227	NLTRPPR75D1000133	USA
183	NLTRPPR74D1000088	USA	228	NLTRPPR77D1000134	USA
184	NLTRPPR76D1000089	USA	229	NLTRPPR79D1000135	USA
185	NLTRPPR72D1000090	USA	230	NLTRPPR70D1000136	USA
186	NLTRPPR7XC1000093	USA	231	NLTRPPR72D1000137	USA
187	NLTRPPR71C1000094	USA	232	NLTRPPR74D1000138	USA
188	NLTRPPR73C1000095	USA	233	NLTRPPR76D1000142	USA
189	NLTRPPR75C1000096	USA	234	NLTRPPR76D1000139	USA
190	NLTRPPR75D1000097	USA	235	NLTRPPR72D1000140	USA
191	NLTRPPR77D1000098	USA	236	NLTRPPR74D1000141	USA
192	NLTRPPR79D1000099	USA	237	NLTRPPR78D1000143	USA
193	NLTRPPR71D1000100	USA	238	NLTRPPR7XD1000144	USA
194	NLTRPPR73D1000101	USA	239	NLTRPPR71D1000145	USA
195	NLTRPPR75D1000102	USA	240	NLTRPPR73D1000146	USA
196	NLTRPPR77D1000103	USA	241	NLTRPPR75D1000147	USA
197	NLTRPPR72D1000106	USA	242	NLTRPPR77D1000148	USA
198	NLTRPPR79D1000104	USA	243	NLTRPPR79D1000149	USA
199	NLTRPPR70D1000105	USA	244	NLTRPPR75D1000150	USA
200	NLTRPPR74D1000107	USA	245	NLTRPPR77D1000151	USA
201	NLTRPPR75D1000116	USA	246	NLTRPPR79D1000152	USA
202	NLTRPPR77D1000117	USA	247	NLTRPPR70D1000153	USA
203	NLTRPPR79D1000118	USA	248	NLTRPPR72D1000154	USA
204	NLTRPPR70D1000119	USA	249	NLTRPPR74D1000155	USA
205	NLTRPPR77D1000120	USA	250	NLTRPPR76D1000156	USA
206	NLTRPPR79D1000121	USA	251	NLTRPPR78D1000157	USA
207	NLTRPPR70D1000122	USA	252	NLTRPPR7XD1000158	USA
208	NLTRPPR72D1000123	USA	253	NLTRPPU72D1000002	USA
209	NLTRPPR76D1000108	USA	254	NLTRPPR71D1000159	USA
210	NLTRPPR78D1000109	USA	255	NLTRPPR78D1000160	USA
211	NLTRPPR74D1000110	USA	256	NLTRPPR7XD1000161	USA
212	NLTRPPR76D1000111	USA	257	NLTRPPR71D1000162	USA
213	NLTRPPR78D1000112	USA	258	NLTRPPR73D1000163	USA
214	NLTRPPR7XD1000113	USA	259	NLTRPPR75D1000164	USA
215	NLTRPPR71D1000114	USA	260	NLTRPPR77D1000165	USA
216	NLTRPPR73D1000115	USA	261	NLTRPPR79D1000166	USA
217	NLTRPPR74D1000124	USA	262	NLTRPPR70D1000167	USA
218	NLTRPPR76D1000125	USA	263	NLTRPPR72D1000168	USA
219	NLTRPPR7XD1000127	USA	264	NLTRPPU74D1000003	USA
220	NLTRPPR71D1000128	USA	265	NLTRPPR74D1000169	USA
221	NLTRPPR78D1000126	USA	266	NLTRPPR70D1000170	USA
222	NLTRPPU79E1000001	USA	267	NLTRPPR72D1000171	USA
223	NLTRPPR73D1000129	USA	268	NLTRPPR74D1000172	USA
224	NLTRPPR7XD1000130	USA	269	NLTRPPR76D1000173	USA
225	NLTRPPR71D1000131	USA	270	NLTRPPU76D1000004	USA

SERVICE BULLETIN

271	NLTRPPU78D1000005	USA	316	NLTRPPU72E1000227	USA
272	NLTRPPU7XD1000006	USA	317	NLTRPPU74E1000228	USA
273	NLTRPPU72E1000017	USA	318	NLTRPPU76E1000229	USA
274	NLTRPPU74E1000018	USA	319	NLTRPPU72E1000230	USA
275	NLTRPPU76E1000019	USA	320	NLTRPPU74E1000231	USA
276	NLTRPPU72E1000020	USA	321	NLTRPPU76E1000232	USA
277	NLTRPPU74E1000021	USA	322	NLTRPPU78E1000233	USA
278	NLTRPPU76E1000022	USA	323	NLTRPPU7XE1000234	USA
279	NLTRPPU78E1000023	USA	324	NLTRPPU71E1000235	USA
280	NLTRPPU7XE1000024	USA	325	NLTRPPU79E1000239	USA
281	NLTRPPU71E1000025	USA	326	NLTRPPU73E1000236	USA
282	NLTRPPU73E1000026	USA	327	NLTRPPU75E1000237	USA
283	NLTRPPU74E1000200	USA	328	NLTRPPU77E1000238	USA
284	NLTRPPU76E1000201	USA	329	NLTRPPU75E1000240	USA
285	NLTRPPU78E1000202	USA	330	NLTRPPU77E1000241	USA
286	NLTRPPU7XE1000203	USA	331	NLTRPPU79E1000242	USA
287	NLTRPPU71E1000204	USA	332	NLTRPPU70E1000243	USA
288	NLTRPPU73E1000205	USA	333	NLTRPPU72E1000244	USA
289	NLTRPPU75E1000206	USA	334	NLTRPPU74E1000245	USA
290	NLTRPPU77E1000207	USA	335	NLTRPPU76E1000246	USA
291	NLTRPPU79E1000208	USA	336	NLTRPPU78E1000247	USA
292	NLTRPPU70E1000209	USA	337	NLTRPPU71E1000218	USA
293	NLTRPPU77E1000210	USA	338	NLTRPPU73E1000219	USA
294	NLTRPPU79E1000211	USA	339	NLTRPPU7XE1000220	USA
295	NLTRPPU70E1000212	USA	340	NLTRPPU71E1000221	USA
296	NLTRPPU72E1000213	USA	341	NLTRPPU7XE1000248	USA
297	NLTRPPU74E1000214	USA	342	NLTRPPU71E1000249	USA
298	NLTRPPU7XE1000007	USA	343	NLTRPPU78E1000250	USA
299	NLTRPPU71E1000008	USA	344	NLTRPPU7XE1000251	USA
300	NLTRPPU73E1000009	USA	345	NLTRPPU71E1000252	USA
301	NLTRPPU7XE1000010	USA	346	NLTRPPU73E1000253	USA
302	NLTRPPU71E1000011	USA	347	NLTRPPU75E1000254	USA
303	NLTRPPU73E1000012	USA	348	NLTRPPU77E1000255	USA
304	NLTRPPU75E1000013	USA	349	NLTRPPU79E1000256	USA
305	NLTRPPU77E1000014	USA	350	NLTRPPU70E1000257	USA
306	NLTRPPU79E1000015	USA	351	NLTRPPU72E1000258	USA
307	NLTRPPU70E1000016	USA	352	NLTRPPU74E1000259	USA
308	NLTRPPU76E1000215	USA	353	NLTRPPU70E1000260	USA
309	NLTRPPU78E1000216	USA	354	NLTRPPU72E1000261	USA
310	NLTRPPU7XE1000217	USA	355	NLTRPPU74E1000262	USA
311	NLTRPPU73E1000222	USA	356	NLTRPPU76E1000263	USA
312	NLTRPPU77E1000224	USA	357	NLTRPPU78E1000264	USA
313	NLTRPPU75E1000223	USA	358	NLTRPPU7XE1000265	USA
314	NLTRPPU79E1000225	USA	359	NLTRPPU71E1000266	USA
315	NLTRPPU70E1000226	USA	360	NLTRPPU73E1000267	USA



SERVICE BULLETIN

361	NLTRPPU75E1000268	USA	368	NLTRPPU72E1000275	USA
362	NLTRPPU77E1000269	USA	369	NLTRPPU74E1000276	USA
363	NLTRPPU73E1000270	USA	370	NLTRPPU76E1000277	USA
364	NLTRPPU75E1000271	USA	371	NLTRPPU78E1000278	USA
365	NLTRPPU77E1000272	USA	372	NLTRPPU7XE1000279	USA
366	NLTRPPU79E1000273	USA	373	NLTRPPU75F1000286	USA
367	NLTRPPU70E1000274	USA	374	NLTRPPU77F1000287	USA