



SERVICE BULLETIN

SB-10056651-1786

Bulletin Type.....: **M**
Bulletin No.....: **TS-M76**
Bulletin Name.....: **Ventilation Hose TS30**
NHTSA #.....:
Bulletin Ref.No...: **700002378**
Release Date.....: **15.07.2014**
Expiry Date.....: **15.07.2015**
Vehicle Model....: **TS30**
Flat Rate Code....: **TS-M76**
Flat Rate Time....: **30 min**

SUBJECT : Vent Hose Installation

SUMMARY : This bulletin explains the vent hose installation.

Bulletin Responsible.....: **Hakan GÖRGÜN**

Published by & Approved by... : **Süleyman Uğurses**

Welding on the Chassis

- Always disconnect the batteries (starting with the negative lead).
- Disconnect the connectors of electrical and electronic equipment (electronic control units, sensors and actuators) if they are less than 20 inches away from the chassis part to be welded or the earth terminal of the welding equipment.
- The earth terminal should never be attached to vehicle components such as engine, axles and springs. Arcing on these parts is not permitted, because of the risk of damage to bearings, springs, etc.
- The earth terminal must make good contact and be placed as close as possible to the part to be welded.
- Plastic pipes, rubber parts and parabolic springs should be well protected against welding spatter and temperatures higher than 70°.
- The contact switch must not be in the accessory or contact position. The contact key should be removed.
- Reconnect in reversed order of disconnecting. Ensure that a good earth connection is made between chassis, engine and cab.

Service bulletin expiry dates differ according to service bulletin type.

Definitions

Release Date: As of this date the bulletin is released and available on E-Doc. Modification parts can be ordered. The time period between the release date and the effective date may vary according to the procurement lead time.

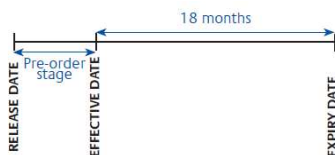
Effective Date: As of this date specified amount of the total modification parts will be available on Spare Parts Stock. Modification parts can be ordered and the application can be performed. (except non-compliance and safety related campaigns, i.e. S-Type Bulletin)

Part Order Deadline: Last order date for modification parts. The part orders which will be placed after this date should be approved by Regional Coordinator.

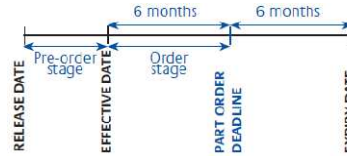
Expiry Date: Expiration date for the application.

Bulletin Types

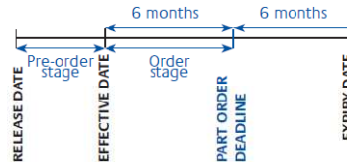
- **S-Type:** Application period of this bulletin is 18 months after the date of issue. S type bulletin is used for Recall Campaigns.



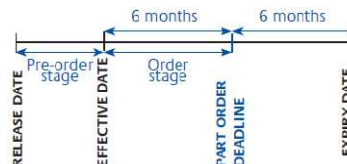
- **U-Type :** Application period of this bulletin is 12 months after the date of issue. U type bulletin is used for updates that need to be performed upon customer complaints.



- **C-Type:** Application period of this bulletin is 12 months after the date of issue. C type bulletin is generally used for supplying technical instructions or other type of information to service network.



- **M-Type:** Application period of this bulletin is 12 months after the date of issue. M type bulletin is used for updates that should be implemented without waiting for customer complaints.



Parts List

INSTALLED PARTS LIST

	PART NO	PART NAME	Qty.	UNIT OF MEASURE
1	NK213125	MANG. SIL200 Ø25X3000	59"	Inch
2	BKSG1-3220C	CLIPS, RSGU 1. 32/20 W1	2	Piece
3	TC386109Y	BOLT M6x1x20	2	Piece
4	TC398915Y	BAND CABLE	4	Piece
5	BW302504009D	CLAMP, BAND, T25-40,9mm	2	Piece

Technical Instructions



1. Open the fuel tank door to have the access the ventilation valves



2. The hose will be connected to the ventilation valve outlet on the tank.

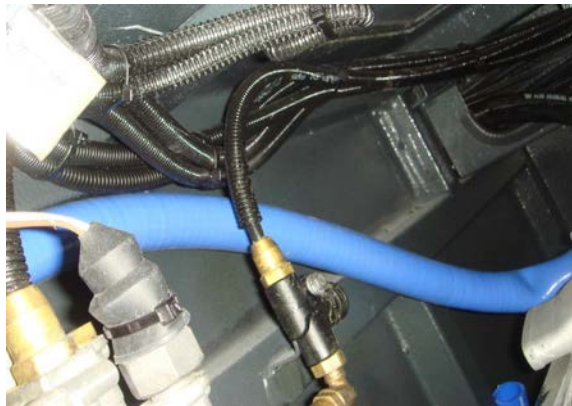


3. The hose, NK213125 will be used for this application. It will be directed as shown.

SERVICE BULLETIN



4. Note that , the hose should be routed always on the top level as much as possible.

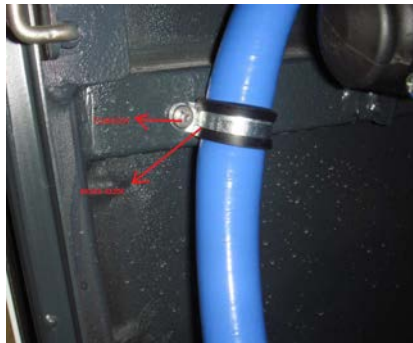
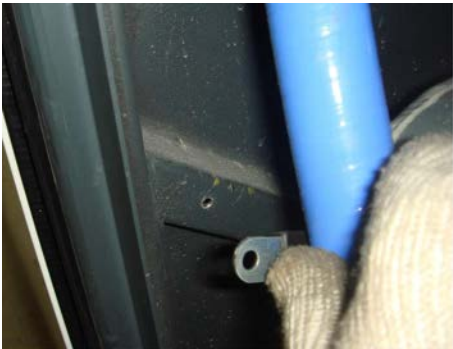
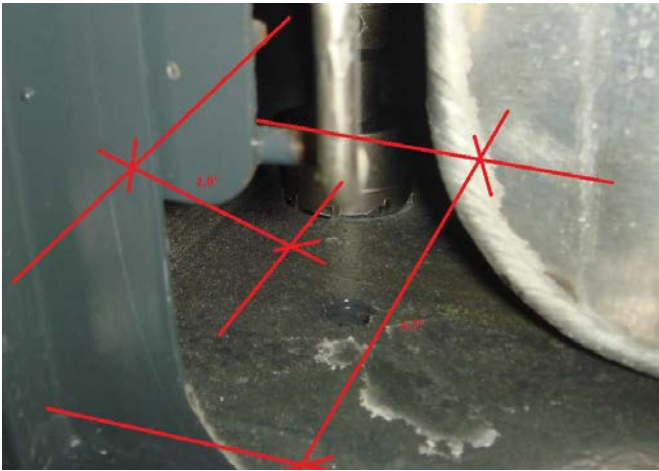


5. Mount the to the ventilation valve outlet on the tank by using clamp (BW302504009D).

SERVICE BULLETIN



6. Hole cutting operation must be performed with the diameter 1,38".



7. Hose should be clamped to the chassis wall as shown in the pictures.



SERVICE BULLETIN

Flat Rate Break Down

APPLICATION	TIME
Preparation	5 min
Vent Hose Installation	25 min
TOTAL	30 min.



SERVICE BULLETIN

Affected Vehicle List

1	NLTAPLR56C1000001	USA	46	NLTAPLR56D1000047	USA
2	NLTAPLR58C1000002	USA	47	NLTAPLR58D1000048	USA
3	NLTAPLR5XD1000004	USA	48	NLTAPLR5XD1000049	USA
4	NLTAPLR55D1000007	USA	49	NLTAPLR56D1000050	USA
5	NLTAPLR51D1000005	USA	50	NLTAPLR58D1000051	USA
6	NLTAPLR53D1000006	USA	51	NLTAPLR5XD1000052	USA
7	NLTAPLR57D1000008	USA	52	NLTAPLR51D1000053	USA
8	NLTAPLR59D1000009	USA	53	NLTAPLR53D1000054	USA
9	NLTAPLR55D1000010	USA	54	NLTAPLR55D1000055	USA
10	NLTAPLR57D1000011	USA	55	NLTAPLR57D1000056	USA
11	NLTAPLR59D1000012	USA	56	NLTAPLU53E1000001	USA
12	NLTAPLR50D1000013	USA	57	NLTAPLR59D1000057	USA
13	NLTAPLR52D1000014	USA	58	NLTAPLR50D1000058	USA
14	NLTAPLR54D1000015	USA	59	NLTAPLR52D1000059	USA
15	NLTAPLR56D1000016	USA	60	NLTAPLR59D1000060	USA
16	NLTAPLR58D1000017	USA	61	NLTAPLR50D1000061	USA
17	NLTAPLR5XD1000018	USA	62	NLTAPLR52D1000062	USA
18	NLTAPLR51D1000019	USA	63	NLTAPLR54D1000063	USA
19	NLTAPLR58D1000020	USA	64	NLTAPLR56D1000064	USA
20	NLTAPLR5XD1000021	USA	65	NLTAPLR58D1000065	USA
21	NLTAPLR51D1000022	USA	66	NLTAPLR5XD1000066	USA
22	NLTAPLR53D1000023	USA	67	NLTAPLR51D1000067	USA
23	NLTAPLR55D1000024	USA	68	NLTAPLR53D1000068	USA
24	NLTAPLR57D1000025	USA	69	NLTAPLR55D1000069	USA
25	NLTAPLR59D1000026	USA	70	NLTAPLR51D1000070	USA
26	NLTAPLR50D1000027	USA	71	NLTAPLR53D1000071	USA
27	NLTAPLR52D1000028	USA	72	NLTAPLR55D1000072	USA
28	NLTAPLR54D1000029	USA	73	NLTAPLR57D1000073	USA
29	NLTAPLR50D1000030	USA	74	NLTAPLR59D1000074	USA
30	NLTAPLR52D1000031	USA	75	NLTAPLR50D1000075	USA
31	NLTAPLR54D1000032	USA	76	NLTAPLR52D1000076	USA
32	NLTAPLR56D1000033	USA	77	NLTAPLR54D1000077	USA
33	NLTAPLR58D1000034	USA	78	NLTAPLR56D1000078	USA
34	NLTAPLR5XD1000035	USA	79	NLTAPLR58D1000079	USA
35	NLTAPLR53D1000037	USA	80	NLTAPLR54D1000080	USA
36	NLTAPLR55D1000038	USA	81	NLTAPLU55E1000002	USA
37	NLTAPLR51D1000036	USA	82	NLTAPLU57E1000003	USA
38	NLTAPLR57D1000039	USA	83	NLTAPLU59E1000004	USA
39	NLTAPLR53D1000040	USA	84	NLTAPLU50E1000005	USA
40	NLTAPLR55D1000041	USA	85	NLTAPLU54E1000007	USA
41	NLTAPLR57D1000042	USA	86	NLTAPLU56E1000008	USA
42	NLTAPLR59D1000043	USA	87	NLTAPLU58E1000009	USA
43	NLTAPLR50D1000044	USA	88	NLTAPLU54E1000010	USA
44	NLTAPLR52D1000045	USA	89	NLTAPLU56E1000011	USA
45	NLTAPLR54D1000046	USA	90	NLTAPLU58E1000012	USA

SERVICE BULLETIN

91	NLTAPLU5XE1000013	USA	108	NLTAPLU5XE1000108	USA
92	NLTAPLU51E1000014	USA	109	NLTAPLU5XE1000111	USA
93	NLTAPLU53E1000015	USA	110	NLTAPLU51E1000112	USA
94	NLTAPLU55E1000016	USA	111	NLTAPLU53E1000113	USA
95	NLTAPLU59E1000097	USA	112	NLTAPLU57E1000115	USA
96	NLTAPLU50E1000098	USA	113	NLTAPLU55E1000114	USA
97	NLTAPLU52E1000099	USA	114	NLTAPLU52E1000006	USA
98	NLTAPLU55E1000100	USA	115	NLTAPLU59E1000116	USA
99	NLTAPLU57E1000101	USA	116	NLTAPLU50E1000117	USA
100	NLTAPLU59E1000102	USA	117	NLTAPLU52E1000118	USA
101	NLTAPLU50E1000103	USA	118	NLTAPLU54E1000119	USA
102	NLTAPLU52E1000104	USA	119	NLTAPLU50E1000120	USA
103	NLTAPLU54E1000105	USA	120	NLTAPLU52E1000121	USA
104	NLTAPLU56E1000106	USA	121	NLTAPLU54E1000122	USA
105	NLTAPLU58E1000107	USA	122	NLTAPLU56E1000123	USA
106	NLTAPLU51E1000109	USA	123	NLTAPLU58E1000124	USA
107	NLTAPLU58E1000110	USA	124	NLTAPLU5XE1000125	USA