

Classification:

BR14-006a

Reference:

ITB14-051a

 COPYRIGHT © NISSAN NORTH AMERICA, INC.
 Date:

July 29, 2015

JX35, QX60, AND Q50; FCW MALFUNCTION AND DTC C1A27 STORED

This bulletin has been amended in the APPLIED VEHICLES, ACTION, and CLAIMS INFORMATION sections. A picture under IF YOU CONFIRM has been added. Table A in the SERVICE PROCEDURE has been revised. Discard all previous versions of this bulletin.

APPLIED VEHICLES: 2013 JX35 (L50) equipped with Intelligent Cruise Control
 2014 QX60 (L50) equipped with Intelligent Cruise Control
 2014-2015 Q50 (V37) equipped with Intelligent Cruise Control
NOTE: Does not apply to Hybrid models

APPLIED DATE: 2013 JX35 – All
 2014 QX60 – AWD models built before May 6, 2014
 FWD models built before August 11, 2014
 2014 Q50 – All
 2015 Q50 – AWD models built before December 26, 2014
 FWD models built before December 25, 2014

IF YOU CONFIRM

All of the following:

- The FCW (Forward Collision Warning) malfunction is ON or reported to have been ON, and
- DTC C1A27 (ECD POWER SUPPLY CIRCUIT) is stored (Past or Current), and
- The brake fluid level is normal.

NOTE: C1A27 is an ICC (Intelligent Cruise Control) DTC.



Figure A: JX35/QX60 combination meter



Figure B: Q50 combination meter

IMPORTANT: The purpose of ACTION (on the next page) is to give you a quick idea of the work you will be performing. You MUST closely follow the entire SERVICE PROCEDURE as it contains information that is essential to successfully completing this repair.

Infiniti Bulletins are intended for use by qualified technicians, not 'do-it-yourselfers'. Qualified technicians are properly trained individuals who have the equipment, tools, safety instruction, and know-how to do a job properly and safely. **NOTE:** If you believe that a described condition may apply to a particular vehicle, DO NOT assume that it does. See your Infiniti retailer to determine if this applies to your vehicle.

ACTION

Reprogram the ABS control unit (ABS) per the Service Procedure in this bulletin.

- Part of the Service Procedure, step 20 on page 8, is a confirmation that reprogramming is needed to resolve the incident shown in Figure A and B on page 1.

SERVICE PROCEDURE

IMPORTANT: Before starting, make sure:

- ASIST on the CONSULT PC has been synchronized to the current date.
- All CONSULT-III plus (C-III plus) software updates (if any) have been installed.

NOTE: The CONSULT PC automatically gets applicable reprogramming data during ASIST synchronization.

- A screen print for Warranty documentation can be done from the CONSULT PC during this process while still connected to the vehicle.
- **No DTCs stored.**
 - Use C-III plus to perform Self Diagnosis for all systems.
 - If there are any DTCs other than C1A27, diagnose, perform repairs, and erase DTCs **before** continuing.
 - If only DTC C1A27 is stored, erase DTC before continuing.

1. Connect the plus VI to the vehicle.

CAUTION: Make sure the plus VI is securely connected. If the plus VI connection is loose during reprogramming, the process will be interrupted and the the control unit **may be damaged**.

2. Connect the AC Adapter to the CONSULT PC.

CAUTION: Be sure to connect the AC Adapter. If the CONSULT PC battery voltage drops during reprogramming, the process will be interrupted and the control unit **may be damaged**.

3. Connect the GR8 and set to "Power Supply" mode.

CAUTION: Be sure the battery charger is connected securely to the battery. Make sure the battery voltage stays between 12.0V and 15.5V during reprogramming. If the battery voltage goes out of this range during reprogramming, the control unit **may be damaged**.

4. Turn OFF all external Bluetooth® devices (e.g., cell phones, printers, etc.) within range of the CONSULT PC and the VI.

CAUTION: Make sure to turn off all external Bluetooth® devices. If Bluetooth® signal waves are within range of the CONSULT PC and the VI during reprogramming, reprogramming may be interrupted, and the control unit **may be damaged**.

5. Turn the ignition ON with the engine OFF.

- The engine must not start or run during the reprogramming procedure.

6. Turn OFF all vehicle electrical loads such as exterior lights, interior lights, HVAC, blower, rear defogger, audio, NAVI, seat heater, steering wheel heater, etc.

IMPORTANT: Make sure to turn OFF all vehicle electrical loads. Make sure the battery voltage stays between 12.0V and 15.5V during reprogramming. If the battery voltage goes out of this range during reprogramming the control unit **may be damaged**.

7. Turn ON the CONSULT PC.

8. Select CONSULT-III plus (open C-III plus).

9. Wait for the plus VI to be recognized.
- Serial number will display when the plus VI is recognized.

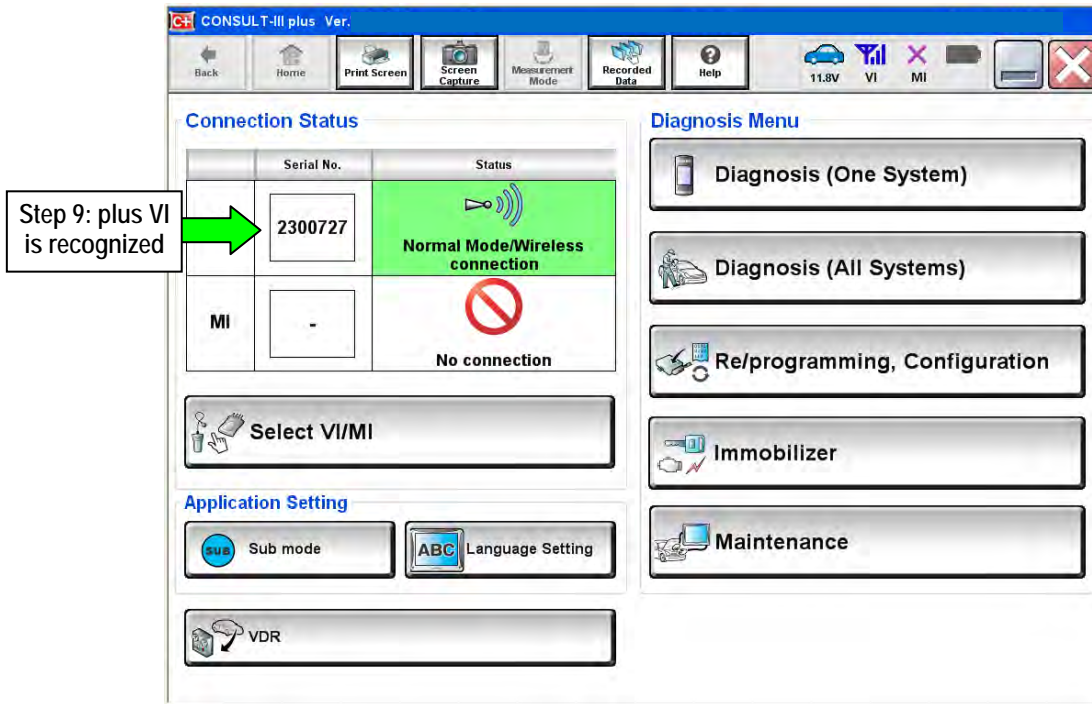


Figure 1

10. Select Re/programming, Configuration.

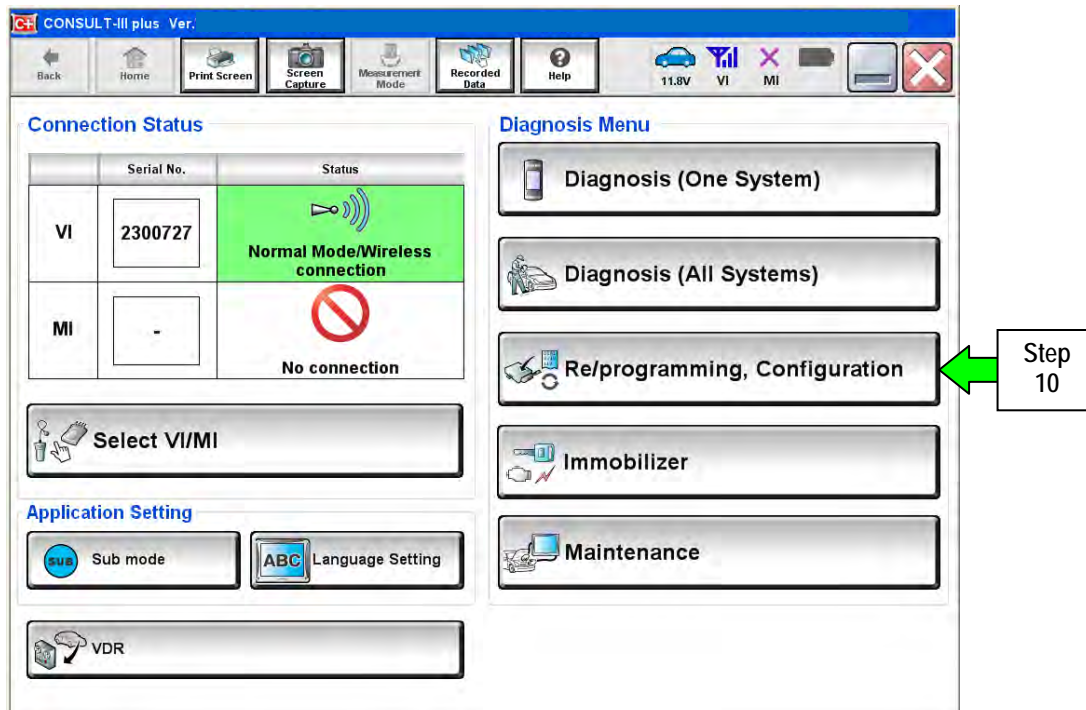


Figure 2

11. Use arrows (if needed) to view and read all precautions.
12. Check the box confirming the precautions have been read.
13. Select **Next**.

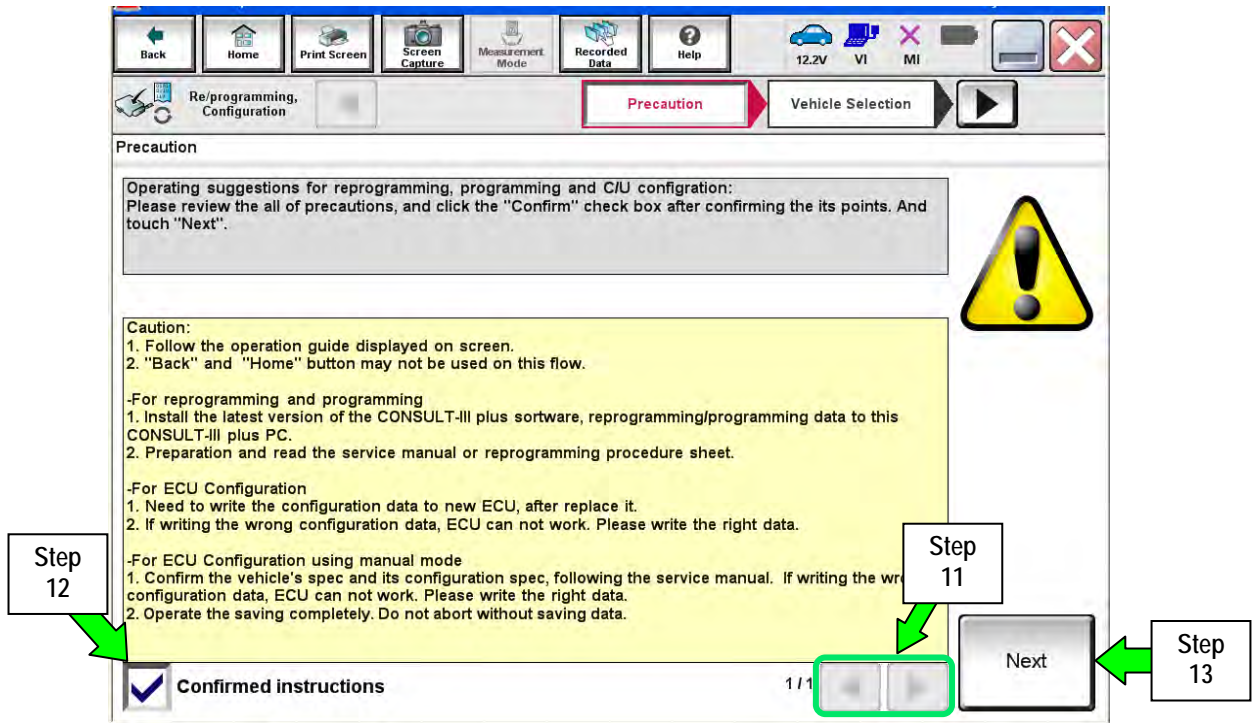


Figure 3

14. If the screen in Figure 4 displays, select **Automatic Selection(VIN)**.

- If the screen in Figure 4 does not display, skip to step 15.

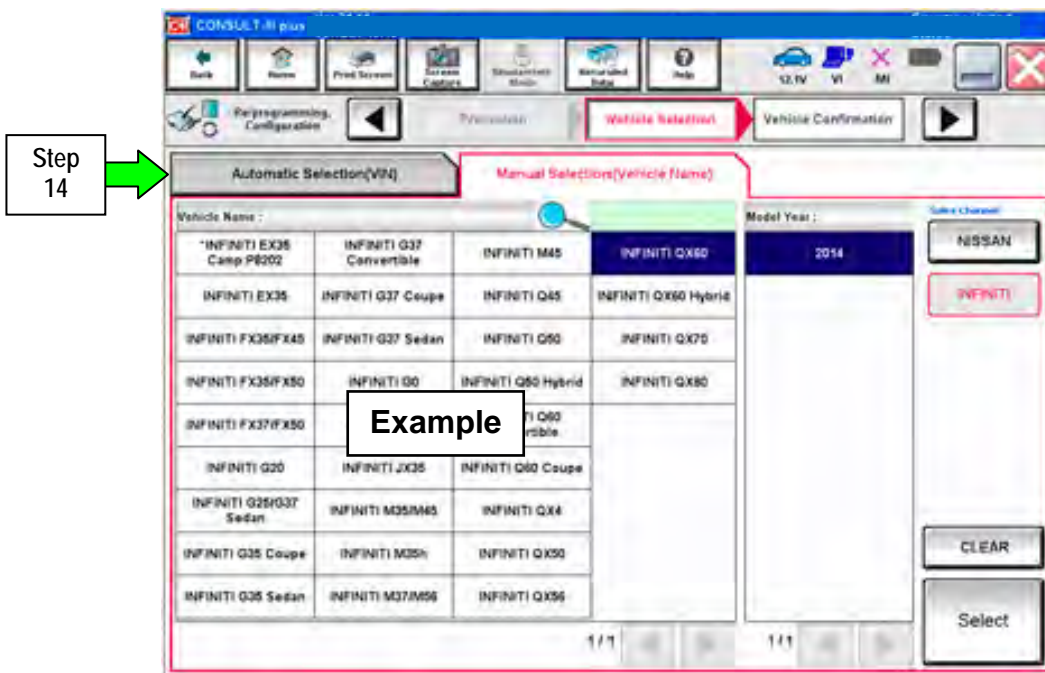
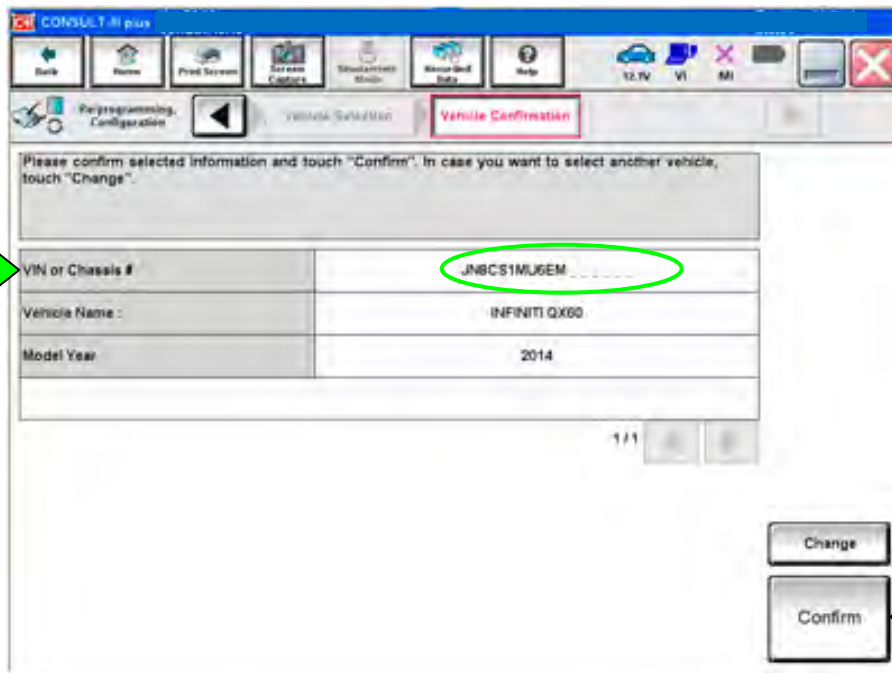


Figure 4

15. Verify the VIN or Chassis # matches that of the vehicle.

16. If the correct VIN is displayed, select **Confirm**.

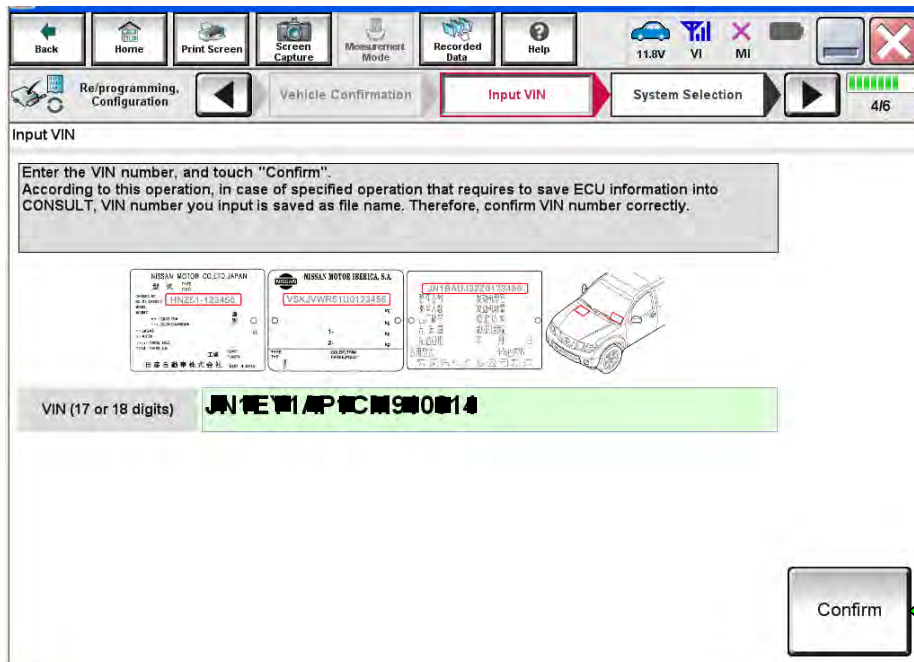
Step 15:
Verify here



Step 16: If OK,
select Confirm

Figure 5

17. Select **Confirm** again.



Step
17

Figure 6

18. Select **ABS**.

- Use the scroll arrows as needed.

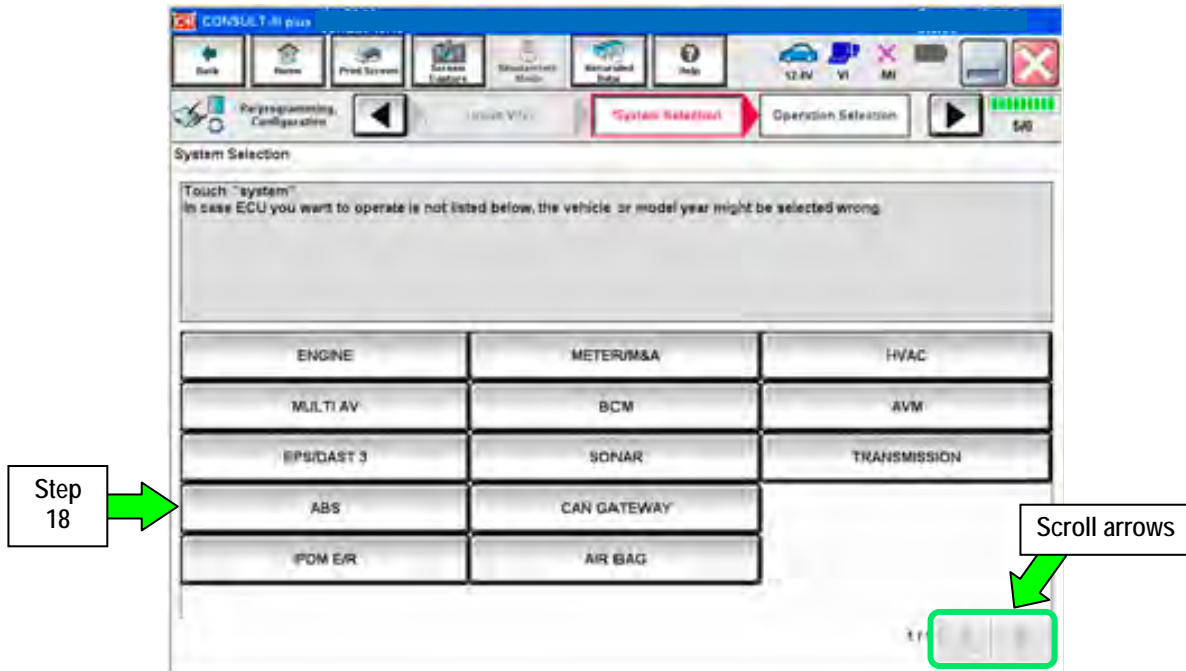


Figure 7

19. Wait for System Call to complete and then select **Reprogramming**.

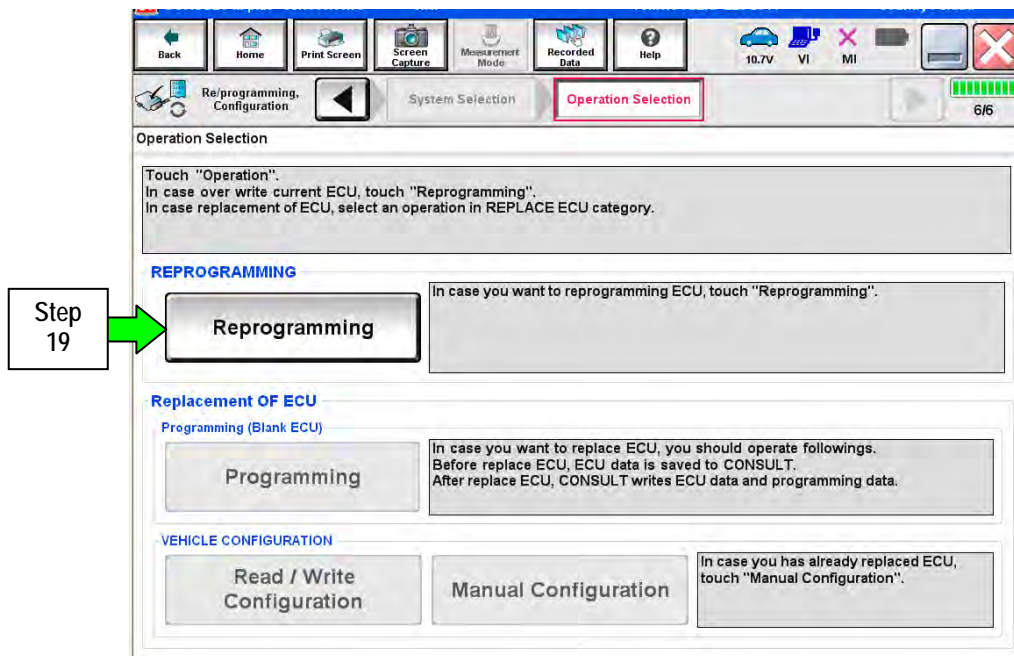


Figure 8

20. When you get to the screen shown in Figure 9, confirm reprogramming applies as follows:

a. Find the ABS Part Number and write it on the repair order.

NOTE: This is the current ABS Control Unit Part Number.

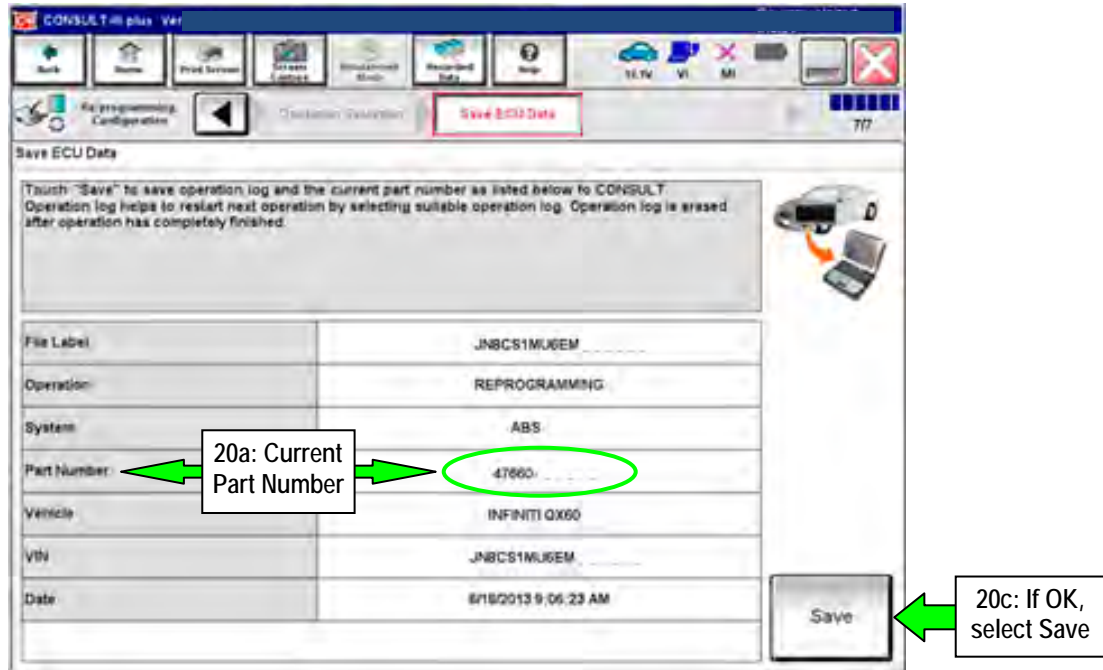


Figure 9

b. Compare the P/N you wrote down to the numbers in the **Current Part Number** column of **Table A** below:

- If there is a match, this bulletin applies. Continue with the reprogramming procedure on the next page.
- If there is not a match, this bulletin does not apply. Close C-III plus and check ASIST for further diagnostic and repair information.

c. If there is a part number match as specified below, select **Save** and then continue with the reprogramming procedure on the next page.

Table A

CONTROL UNIT	MODEL	CURRENT PART NUMBER: 47660-
ABS	2013 JX35 2014 QX60	3JA1B, 3JA2B
		3JA1D, 3JA2D
		3JU1B, 3JU2B
		3JU1D, 3JU2D
	2014-2015 Q50	4GB5B, 4GB6B, 4GB7B
		4GB1C
		4GE4E, 4GE5E, 4GE8E
		4GC0D, 4GC1D, 4GC2D, 4GC3D, 4GC4D, 4GC5D, 4GC6D, 4GC7D, 4GC8D, 4GC9D
		4GC0E, 4GC1E, 4GC2E, 4GC3E, 4GC4E, 4GC5E
		4GJ0D, 4GJ1D, 4GJ2D, 4GJ3D, 4GJ4D, 4GJ5D, 4GJ6D, 4GJ7D, 4GJ8D, 4GJ9D

21. Use arrows (if needed) to view and read all precautions.
22. Check the box confirming the precautions have been read.
23. Select **Next**.

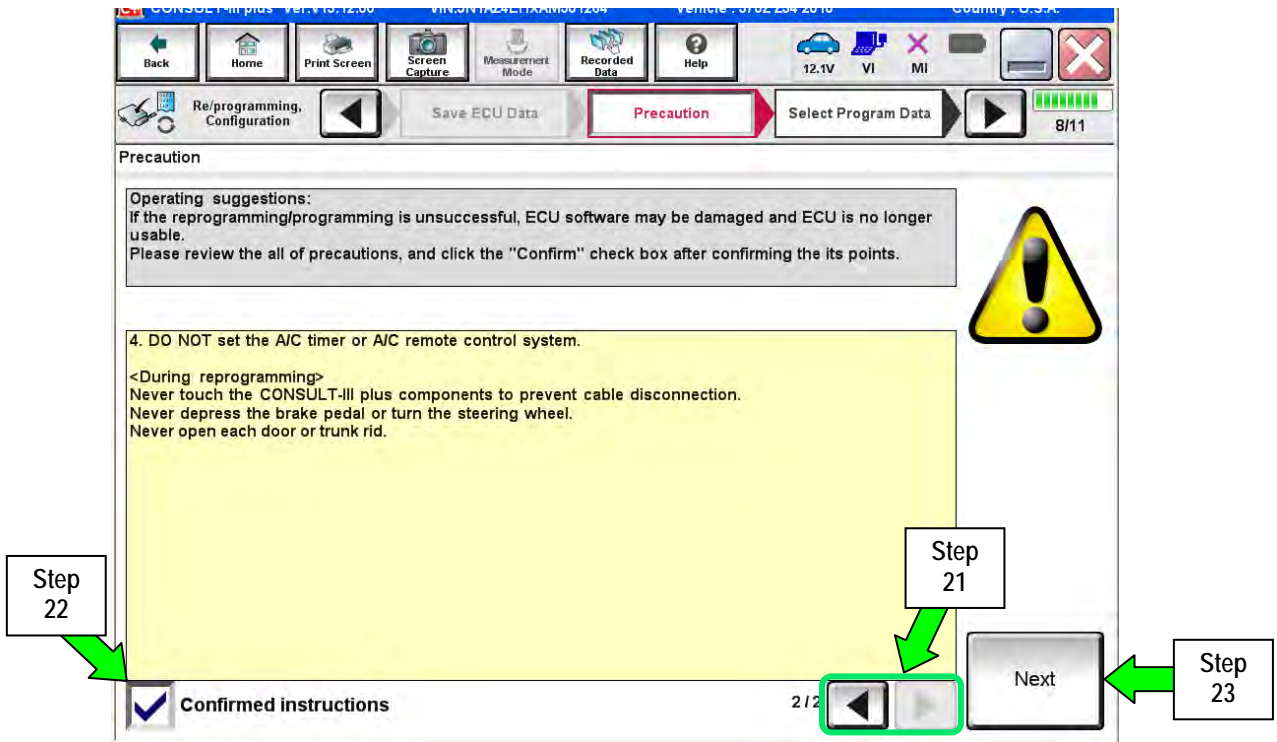


Figure 10

24. Read the **Current Part Number** and **Part Number After Reprogramming**. They should be different.
25. Select **Next**.

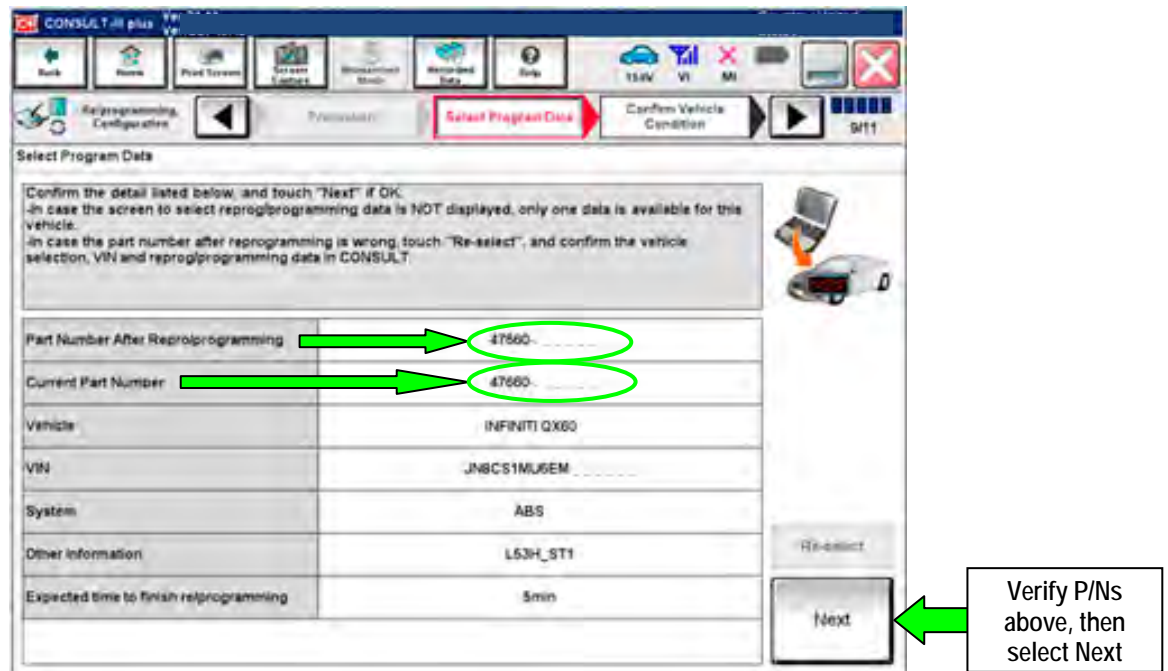


Figure 11

26. Confirm battery voltage is correct, and then select **Next**.

NOTE: Battery voltage must stay within the specified range to make the indicator turn green.

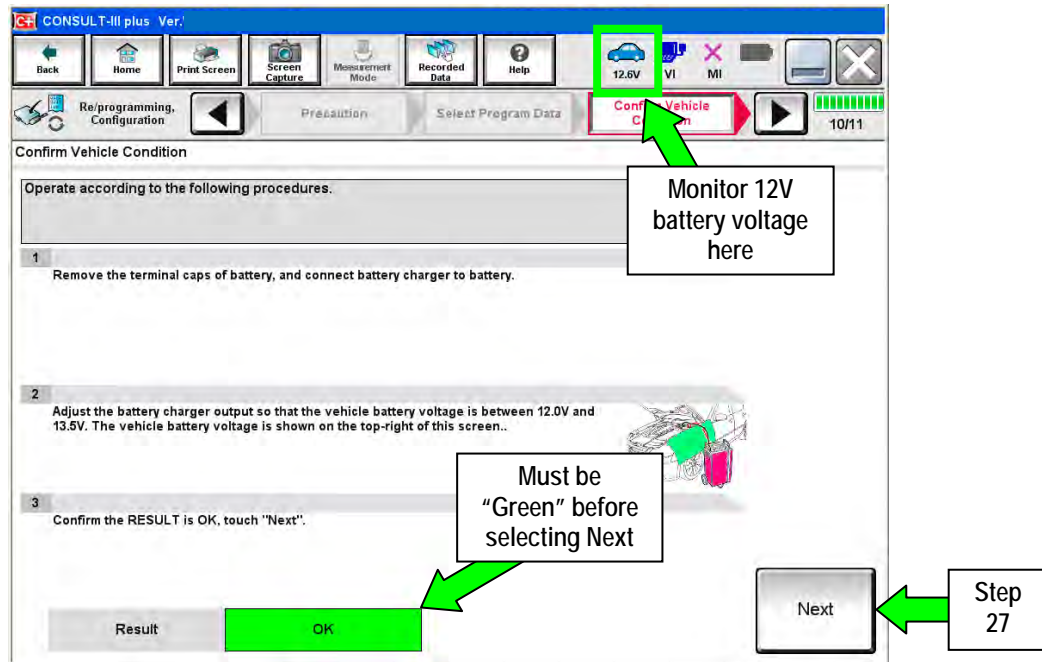


Figure 12

27. With battery voltage OK (green), select **Start**.

- The reprogramming process begins when Start is selected.

IMPORTANT: Battery voltage must stay between 12.0 and 15.5 Volts during reprogramming or METER reprogramming may be interrupted and the control unit may be damaged.

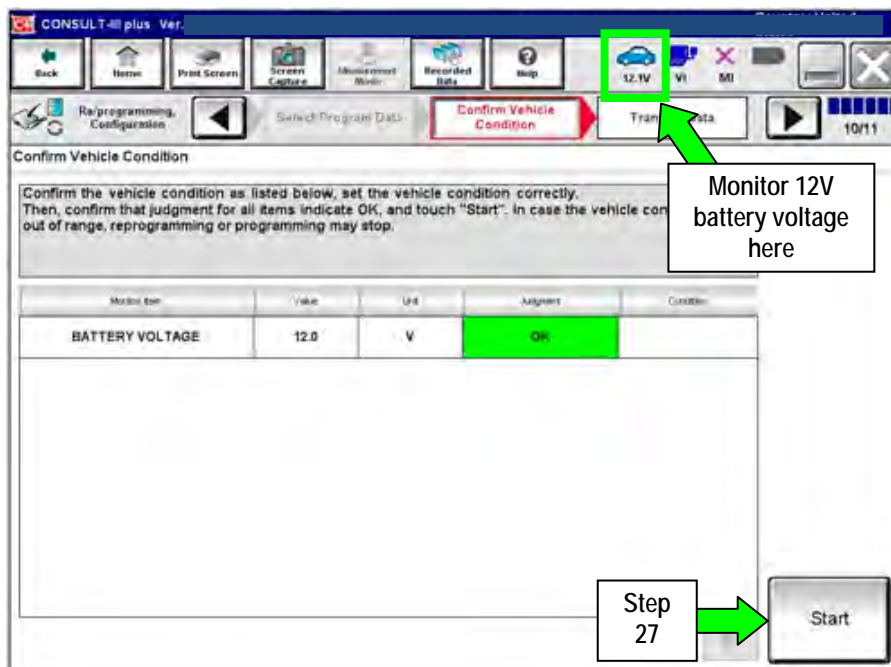


Figure 13

28. Wait for both progress bars to complete.

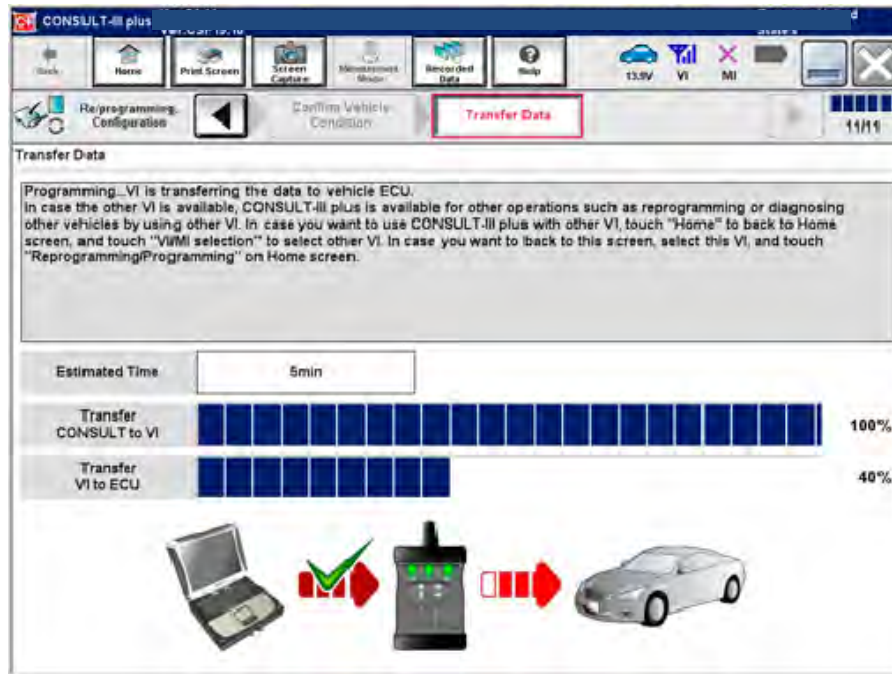


Figure 14

29. When the screen in Figure 15 displays, the reprogramming is complete.

NOTE: If the screen in Figure 15 does not display (reprogramming does not complete), refer to the information on the next page.

30. Disconnect the battery charger from the vehicle.

31. Select **Next**.

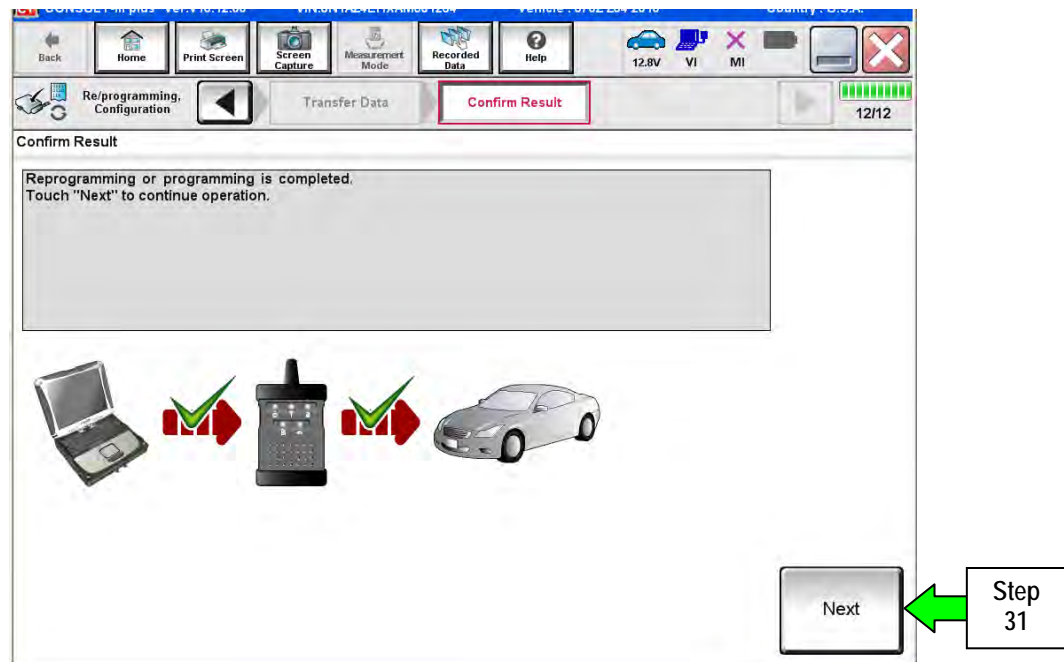


Figure 15

NOTE: DTC Erase must be performed before C-III plus will provide the final reprogramming confirmation report. Continue with the reprogramming procedure on page 13.

Control Unit Recovery:

Do not disconnect plus VI or shut down CONSULT-III plus if reprogramming does not complete.

If reprogramming does not complete and the “!?” icon displays as shown in Figure 16:

- Check battery voltage (12.0–15.5 V).
- Ignition is ON, engine OFF.
- External Bluetooth® devices are OFF.
- All electrical loads are OFF.
- **Select retry and follow the on screen instructions.**
- “Retry” may not go through on the first attempt and can be selected more than once.

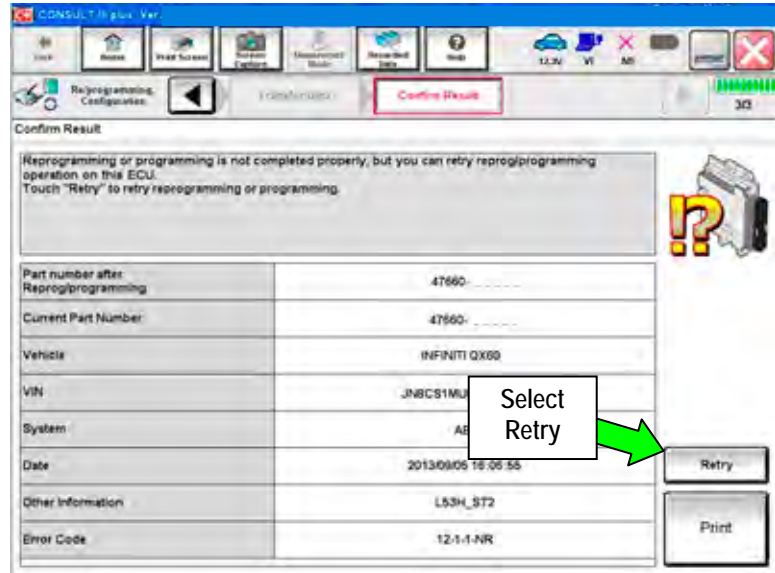


Figure 16

If reprogramming does not complete and the “X” icon displays as shown in Figure 17:

- Check battery voltage (12.0 – 15.5 V).
- CONSULT A/C adapter is plugged in.
- Ignition is ON, engine OFF.
- Transmission is in Park.
- All C-III plus / VI cables are securely connected.
- All C-III plus updates are installed.
- **Select Home, and restart the reprogram procedure from the beginning.**

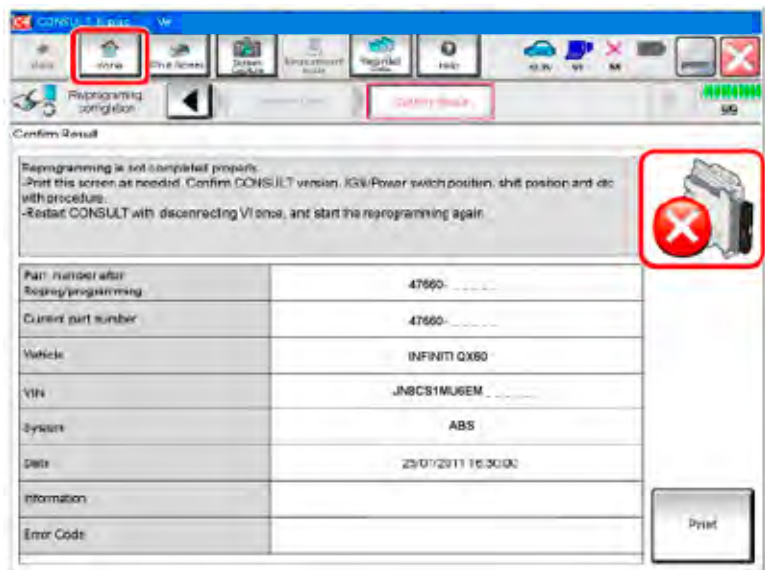


Figure 17

32. Erase all DTCs as follows:

- a. Turn the ignition OFF.
- b. Turn the ignition ON engine OFF.
- c. Wait for DTC erase to complete.

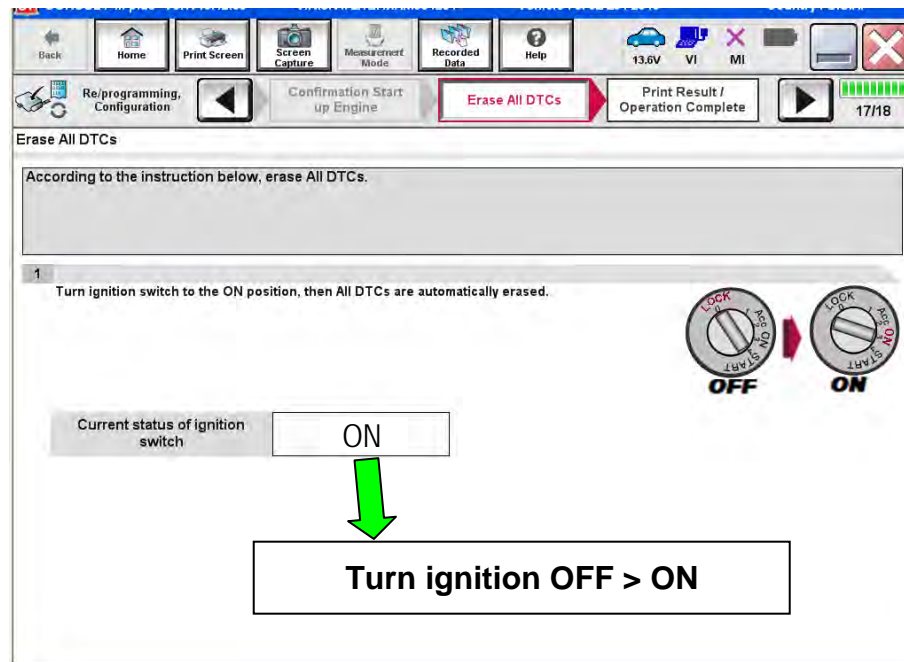


Figure 18

33. Verify the part number has changed (before and after reprogramming part numbers should be different).
 - a. Print a copy of the screen in Figure 19 by selecting **Print**.
 - b. Attach the copy to the repair order.
 - c. Once a copy has been printed, select **Confirm**.

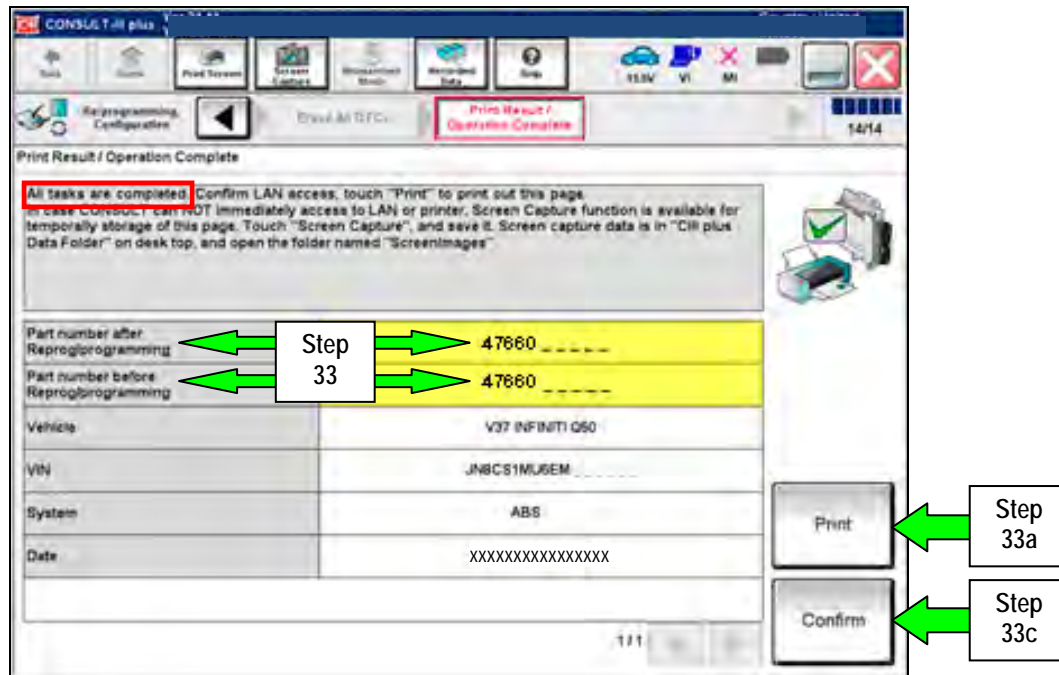


Figure 19

NOTE: If you cannot print the above screen:

- a. Select Screen Capture.
- b. Name the file.
- c. Save the file in My Documents.
 - A copy of the screen is now saved in the CONSULT PC. It can be retrieved and printed at a later time.

34. After Confirmation has completed:

- a. Select **Home**, close C-III plus, and disconnect from the vehicle.
- b. Close C-III plus.
- c. Turn the ignition OFF.
- d. Disconnect the plus VI from the vehicle.

CLAIMS INFORMATION

JX35/QX60 (L50)

Submit a Primary Part (PP) type line claim using the following claims coding:

DESCRIPTION	PFP	OP CODE	SYM	DIA	FRT
Reprogram ABS control unit	(1)	PX74AA	HC	32	0.4 hrs.

- (1) Refer to the electronic parts catalog (FAST or equivalent) and use the appropriate ACTUATOR ASSY – ANTISKID (ABS Control Unit) part number (47660 - XXXXX) as the Primary Failed Part (PFP).

Q50 (V37)

Submit a Primary Part (PP) type line claim using the following claims coding:

DESCRIPTION	PFP	OP CODE	SYM	DIA	FRT
Reprogram ABS control unit	(1)	PX78AA	HC	32	0.4 hrs.

- (1) Refer to the electronic parts catalog (FAST or equivalent) and use the appropriate ACTUATOR ASSY – ANTISKID (ABS Control Unit) part number (47660 - XXXXX) as the Primary Failed Part (PFP).