

Second Row Seat Squeak

Service
Category Vehicle Interior

Section Seat

Market USA

Lexus Supports
ASE Certification 

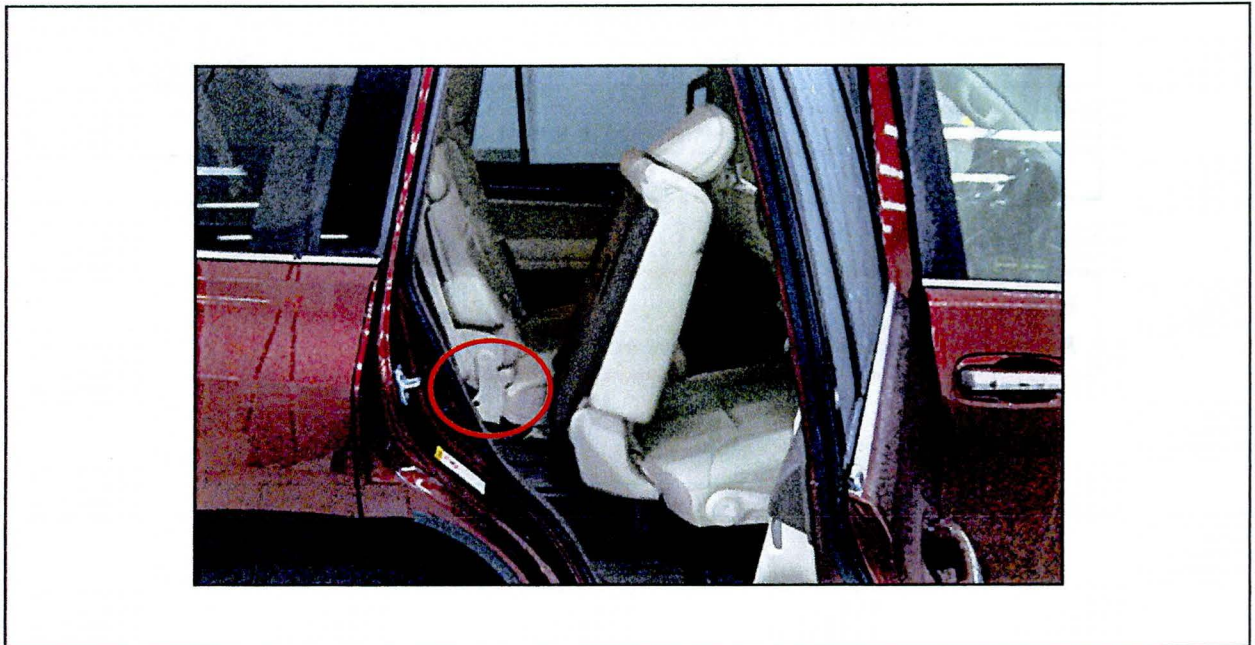
Applicability

YEAR(S)	MODEL(S)	ADDITIONAL INFORMATION
2010 – 2013	GX460	

Introduction

Some 2010 – 2013 model year GX 460 vehicles may exhibit a squeak noise coming from the second row seats when driving over uneven terrain.

The bracket for the inside hinge of the 60% second row seat may rub the seat frame. Follow the procedure outlined below to address this condition.



Production Change Information

MODEL	PRODUCTION CHANGE EFFECTIVE VIN
GX 460	JTJJM7FX#D5062180
	JTJBM7FX#D5062135

Second Row Seat Squeak

Warranty Information

OP CODE	DESCRIPTION	TIME	OFF	T1	T2
BD1402	Insulate Rear Seat Bracket	0.6	72731-60010	91	57

APPLICABLE WARRANTY

- This repair is covered under the Lexus Basic Warranty. This warranty is in effect for 48 months or 50,000 miles, whichever occurs first, from the vehicle's in-service date.
- Warranty application is limited to occurrence of the specified condition described in this bulletin.

Parts Information

PART NUMBER	PART NAME	QTY
08231-00801	Interior Noise Kit	1

Required Tools & Equipment

SPECIAL SERVICE TOOLS (SST)	PART NUMBER	QTY
Plastic Pry Tool Kit*	00002-06020-02	1

REQUIRED TOOLS & MATERIAL	QUANTITY
T45 TORX® Socket Wrench	1

* Essential SST.

NOTE

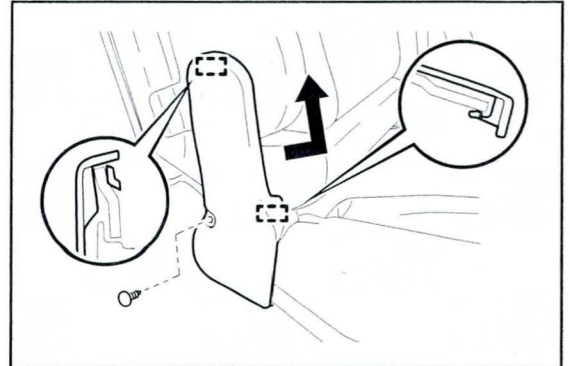
Additional SSTs may be ordered by calling 1-800-933-8335.

Second Row Seat Squeak

Repair Procedure

1. Test drive the vehicle for a noise from the 2nd row inner bracket for the 60% seat.
2. Remove the center seat hinge cover.

Figure 1.



3. Confirm that a noise is being generated by two surfaces rubbing, as shown below.

Figure 2. Approximate Vantage Point (Reposition Foam to Access View)

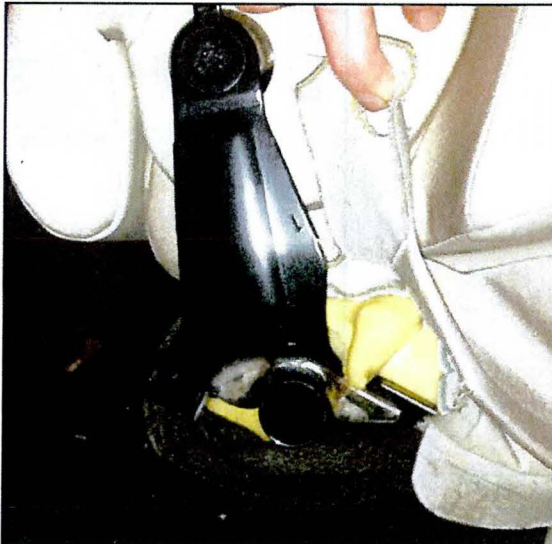


Figure 3. Up-Close View



4. Remove the 60% second row seat.

Refer to the Technical Information System (TIS), applicable model and model year Repair Manual:

- [2010](#) / [2011](#) / [2012](#) / [2013](#) GX 460:
Vehicle Interior – Seat – “Seat: Rear No. 1 Seat Assembly (for 60/40 Split Slide Walk-in Seat Type LH Side): Removal”

Second Row Seat Squeak

Repair Procedure (Continued)

5. Position the seat as shown to access the Rear Seat Reclining Bracket.

NOTICE

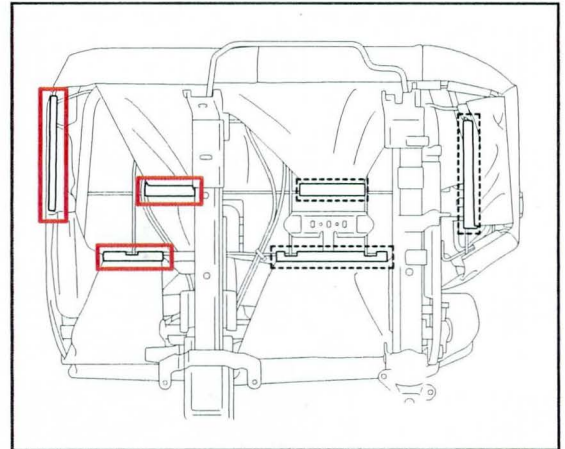
Be sure to protect the seat during service by utilizing a clean/covered work surface.

Figure 4.



6. Partially remove the rear seatback lower cushion cover at the locations shown.

Figure 5.

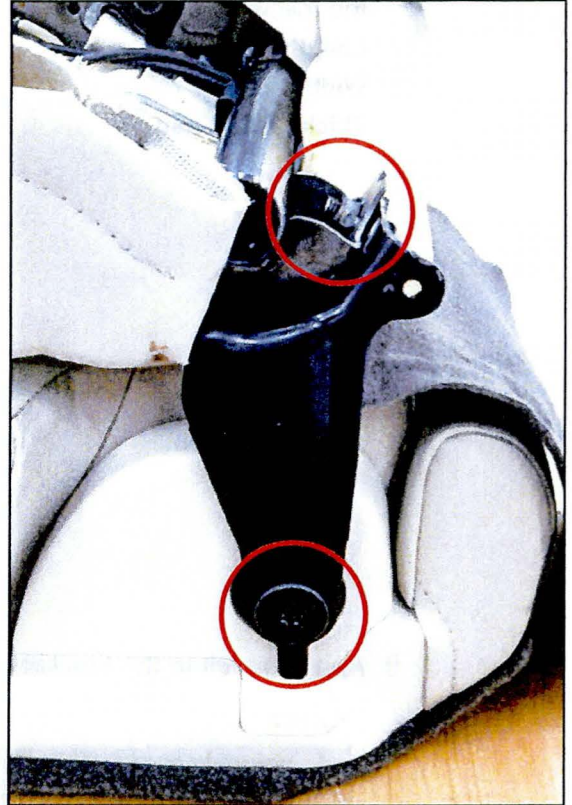


Second Row Seat Squeak

Repair Procedure (Continued)

7. Remove the right Rear Seat Reclining Bracket.
 - A. Using a T45 TORX® Socket Wrench, remove the Rear Seat Reclining Bracket with the TORX® bolt.
 - B. Remove the 12 mm bracket bolt.

Figure 6.



Second Row Seat Squeak

Repair Procedure (Continued)

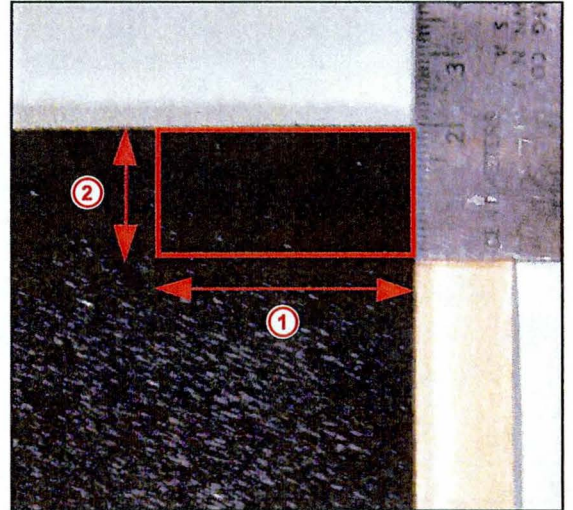
8. From the Interior Noise Kit, cut a section of felt to the following dimensions:

Length: 40 mm

Width: 20 mm

Thickness: 1 mm

Figure 7.



1	40 mm
2	20 mm

9. Apply the felt to the bracket as shown.

Figure 8.

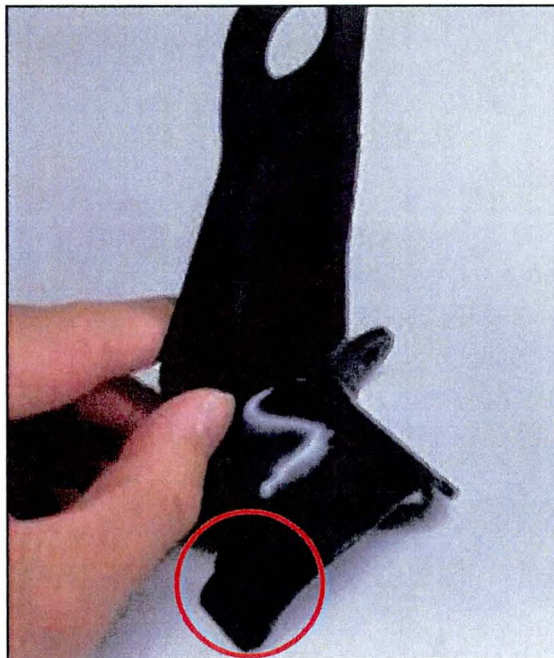


Figure 9.

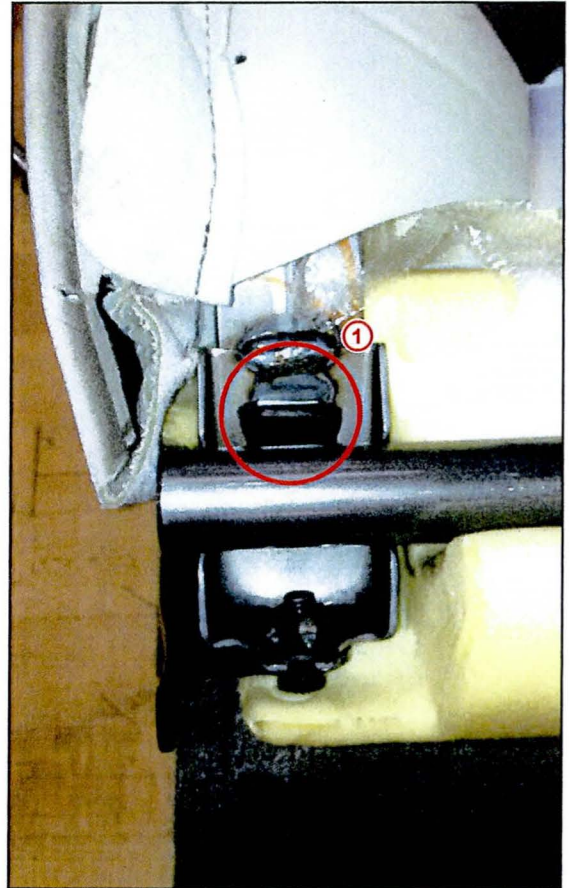


Second Row Seat Squeak

Repair Procedure (Continued)

10. Reassemble the bracket to the 60% second row seat.
 - A. Using a T45 TORX[®] Socket Wrench, install the Rear Seat Reclining Bracket with the TORX[®] bolt.
Torque: 21 N*m (214 kgf*cm, 15 ft*lbf)
 - B. Install the 12 mm bolt.
Torque: 21 N*m (214 kgf*cm, 15 ft*lbf)

Figure 10.



1	Bracket Tab
---	-------------

11. Install the seat into the vehicle.

Refer to TIS, applicable model and model year Repair Manual:

- [2010](#) / [2011](#) / [2012](#) / [2013](#) GX 460:
Vehicle Interior – Seat – “Seat: Rear No. 1 Seat Assembly (for 60/40 Split Slide Walk-in Seat Type LH Side): Installation”

12. Test drive the vehicle to confirm the squeak noise has been corrected.