

# Outside Door Weatherstrip - Multiple Concerns

Service Category Vehicle Exterior

Section Door/Hatch

Market USA

Scion Supports  
 ASE Certification 

## Applicability

YEAR(S)	MODEL(S)	ADDITIONAL INFORMATION
2013 – 2014	FR-S	

### REVISION NOTICE

June 16, 2014 Rev1:

- The Parts Information section has been updated.

Any previous printed versions of this bulletin should be discarded.

## Introduction

Some 2013 – 2014 model year FR-S vehicles may exhibit multiple concerns from the Outer Weatherstrip (belt molding).

The cross section of the weatherstrip has been revised to limit the amount of water passing into the door. If the felt attached to the window stabilizers/guides accumulate water, the vehicle may also make noise from the stabilizers/guides during window operation. In some cases, the felt on the stabilizers/guides may freeze to the window or detach from the plastic backing and damage the window.

Symptoms may include:

- Noise coming from the weatherstrip during window operation, especially when wet.
- Loosening of the weatherstrip from the door.
- Inversion of the weatherstrip during window operation.
- Noise from the stabilizers/guides during window operation.
- Scratches on the glass from worn stabilizers.

If the vehicle displays these symptoms, follow the procedures described in this bulletin to address the condition(s).

## Outside Door Weatherstrip - Multiple Concerns

### Production Change Information

This bulletin applies to vehicles produced **BEFORE** the Production Change Effective VIN shown below.

MODEL	PRODUCTION CHANGE EFFECTIVE VIN
FR-S	JF1ZNAA1#E8705465

### Parts Information

PART NUMBER		PART NAME	QTY
PREVIOUS	NEW		
SU003-04334 SU003-04531 SU003-04771	SU003-05207	Outer Weatherstrip, LH	1
SU003-04335 SU003-04532 SU003-04772	SU003-05208	Outer Weatherstrip, RH	1
SU003-01616		Stabilizer, Front Door Glass, Outer (Per Door)	2
SU003-01617		Stabilizer, Front Door Glass, Inner (Per Door)	1

### Warranty Information

OP CODE	DESCRIPTION	TIME	OFF	T1	T2
BD1408	Replace Front Door Panel Sub-assembly (One Side)	1.6	SU003-04334 SU003-04335 SU003-04531 SU003-04532 SU003-04771 SU003-04772	93	13
Combo A	Replace Front Door Panel Sub-assembly (Other Side)	1.6			
Combo B	Replace Window Stabilizer (One Side)	0.1			
Combo C	Replace Window Stabilizer (Other Side)	0.1			

#### APPLICABLE WARRANTY

- This repair is covered under the Toyota Basic Warranty. This warranty is in effect for 36 months or 36,000 miles, whichever occurs first, from the vehicle's in-service date.
- Warranty application is limited to occurrence of the specified condition described in this bulletin.

## Outside Door Weatherstrip - Multiple Concerns

### Required Tools & Equipment

SPECIAL SERVICE TOOLS (SST)	PART NUMBER	QTY
Plastic Pry Tool Kit*	<a href="#">00002-06020-01</a>	1
Tool, Front Door Glass Adj*	<a href="#">09812-18010-01</a>	1

REQUIRED MATERIAL	QUANTITY
Toyota Genuine Adhesive 1344, Three Bond 1344, Loctite® 242, or Equivalent (for window nuts)	As Needed

\* Essential SST.

**NOTE**

Additional SSTs may be ordered by calling 1-800-933-8335.

### Overview Procedure

1. Confirm the condition.
2. Disassemble door per the Repair Manual.
3. Reassemble door and adjust window glass.
4. Reinitialize window.

### Inspection Procedure

**NOTICE**

**BEFORE** performing the procedures in this bulletin, ensure there is **NO** body or door damage that may affect the alignment of the side window glass.

### Removal Procedure

**NOTE**

Use the same procedure for both the RH and LH sides.

Refer to the Technical Information System (TIS), applicable model and model year Repair Manual:

- [2013 / 2014](#) FR-S:  
*Vehicle Exterior – Exterior Panels / Trim – “Front Door Belt Moulding: Removal”*

1. Disconnect cable from the negative (-) battery terminal.
2. Remove front door trim board sub-assembly with power window switch assembly.
3. Remove front door trim board sub-assembly.



## Outside Door Weatherstrip - Multiple Concerns

### Removal Procedure (Continued)

4. Remove front door service hole cover.
5. Remove front door glass sub-assembly.

Refer to TIS, applicable model and model year Repair Manual.

- [2013 / 2014 FR-S](#):  
*Vehicle Exterior – Front Door – “Door / Hatch: Front Door: Disassembly”*

**HINT**

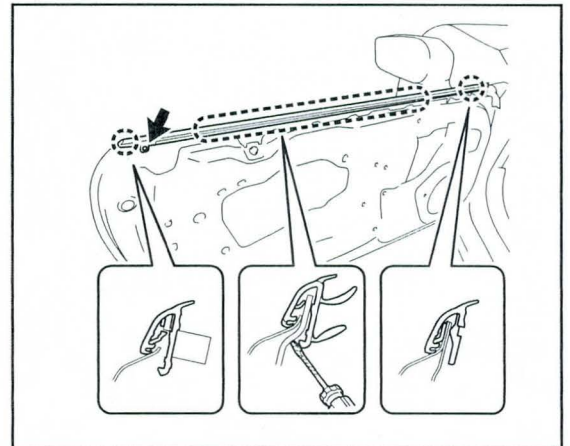
Note position of the inner stabilizer bolt as a reference for window alignment before removing the Front Door Glass sub-assembly.

6. Remove front door glass Outer Weatherstrip assembly.
  - A. Remove the screw.
  - B. If necessary, use a screwdriver to disengage the claw and remove the front door glass Outer Weatherstrip assembly.

**NOTICE**

Tape the screwdriver tip before use.

Figure 1.



7. Inspect Door Glass Inner and Outer Stabilizers for wear or damage.

**NOTE**

Replace stabilizers if felt guide surface is worn or damaged.

### Installation Procedure

**NOTE**

Use the same procedure for both the RH and LH sides.

1. Install Inner and Outer Window Stabilizers if necessary.

**HINT**

Leave Inner Window Stabilizer bolt loose until window is installed.

## Outside Door Weatherstrip - Multiple Concerns

### Installation Procedure (Continued)

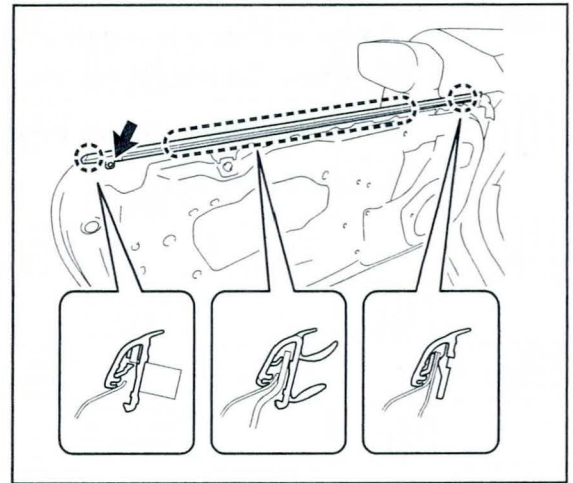
2. Install front door glass Outer Weatherstrip assembly.

Engage the claws to install the screw and a NEW front door glass Outer Weatherstrip assembly as shown.

**NOTE**

Ensure proper installation of Outer Weatherstrip by confirming that the claw attached to the weatherstrip is fully engaged.

Figure 2.



3. Install front door glass sub-assembly.

Refer to TIS, applicable model and model year Repair Manual:

- [2013 / 2014 FR-S](#):  
*Vehicle Exterior – Door/Hatch – “Front Door: Reassembly”*

**NOTE**

Use Loctite™ 242 or equivalent on front door glass flange nuts.

4. Adjust front door glass sub-assembly.

Refer to TIS, applicable model and model year Repair Manual:

- [2013 / 2014 FR-S](#):  
*Vehicle Exterior – Door/Hatch – “Front Door: Adjustment”*

**HINT**

Align Inner Stabilizer bolt to original position as a reference for window alignment.

5. Install front door service hole cover.
6. Install power window switch assembly with front door armrest base panel.
7. Install front door trim board sub-assembly.

## Outside Door Weatherstrip - Multiple Concerns

---

### Installation Procedure (Continued)

8. Install door armrest cover.
9. Connect cable to negative (-) battery terminal.  
Torque: 6.0 N\*m (61 kgf\*cm, 53 in\*lbf)
10. Initialize power window control system.
11. Confirm the repair.