

 HYUNDAI NEW THINKING. NEW POSSIBILITIES. Technical Service Bulletin	GROUP	NUMBER
	AUTOMATIC TRANSMISSION	14-AT-002
	DATE	MODEL
	JANUARY, 2014	GENESIS SEDAN (BH) GENESIS COUPE (BK) EQUUS (VI)
SUBJECT	AUTOMATIC TRANSAXLE TCM UPDATE	


ECU Update

This TSB updates TSB 13-AT-010 to revise the GDS Update Events.

DESCRIPTION:

This bulletin provides a procedure to update the TCM software for Genesis Sedan, Genesis Coupe and Equus only after installing a new or remanufactured 8-speed transmission.

If the ID Number and the Code Number of the replacement transmission indicate it has the 8LR/B cushion spring (shown in red on Page 3), the TCM software must be updated if the vehicle is within the Applicable Production Date Range shown below.

This procedure is necessary because some replacement transmissions may have an additional cushion spring added to the 8LR/B (Low-Reverse Brake).

APPLICABLE VEHICLES (Without 8LR/B cushion spring):

Model Year	Model	Engine	Applicable Production Date
2012~13	Genesis Sedan (BH) with 8AT	4.6L/5.0L	2/23/2011 through 7/22/2012
2012~13	Genesis Sedan (BH) with 8AT	3.8L	2/23/2011 through 7/19/2012
2012~13	Equus (VI) with 8AT	5.0L	7/4/2011 through 7/22/2012
2013~	Genesis Coupe (BK) with 8AT	2.0L	12/28/2011 through 9/12/2012
2013~	Genesis Coupe (BK) with 8AT	3.8L	12/28/2011 through 9/15/2012

NOTE: There are no vehicle performance issues associated with this update.

GDS INFORMATION: The events include the 8LR/B and P0841 (pressure switch) updates.

EVENT #	DESCRIPTION
309	309.BH 8AT TCM P0841 DTC LOGIC CHANGE
310	310.VI 8AT TCM P0841 DTC LOGIC CHANGE
311	311.BK 8AT TCM P0841 DTC LOGIC CHANGE

WARRANTY INFORMATION:

MODEL	OP CODE	OP NAME	OP TIME	CAUSAL P/N	NATURE	CAUSE
Genesis Sedan (BH) Genesis Coupe (BK) Equus (VI)	95440F77	TCM UPGRADE	0.3	See ROM ID table	N69	C40

Circulate To: Service Manager, Warranty Manager, Service Advisors, Technicians, Fleet Repair

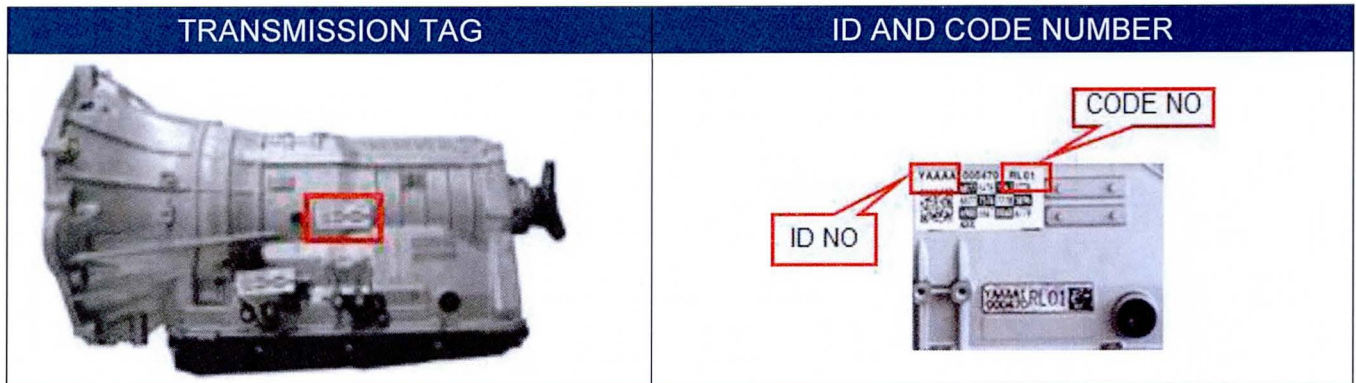
ROM ID TABLE: Verify the TCM ROM ID before updating vehicle software.

MODEL	ENGINE	T/M TYPE	8LR/C	PREVIOUS		NEW	
				TCM P/N	TCM ROM ID	TCM P/N	TCM ROM ID
GENE-SIS SEDAN (BH)	Lambda 3.8 GDI	A8LR1	NO	95440-4F220	TBH0Z38NA0 TBH0Z38NA1 TBH0Z38NA2 TBH0Z38NA3 TBH0Z38NA4 TBH0Z38NA5 TBH0Z38NA6	95440-4F220	TBH0G38N1A
			YES	95440-4F221	TBH0Z38NA7 TBH0Z38NA8 TBH0Z38NA9	95440-4F222	TBH0G38NB1
	Tau 4.6 MPI	A8TR1	NO	95440-4E220	TBH0C46NA0 TBH0C46NA1 TBH0C46NA2 TBH0C46NA3 TBH0C46NA4	95440-4E220	TBH0M46N1A
			YES	95440-4E221	TBH0C46NA5	95440-4E221	TBH0M46N10
	Tau 5.0 GDI	A8TR1	NO	95440-4E200	TBH0Z50NA0 TBH0Z50NA1 TBH0Z50NA2 TBH0Z50NA3 TBH0Z50NA4 TBH0Z50NA5 TBH0Z50NA6	95440-4E200	TBH0G50N1A
			YES	95440-4E201	TBH0Z50NA7 TBH0Z50NA8 TBH0Z50NA9	95440-4E202	TBH0G50NB1
EQUUS (VI)	Tau 5.0 GDI	A8TR1	NO	95440-4E410	TVI0Z50NA0 TVI0Z50NA1 TVI0Z50NA2 TVI0Z50NA3 TVI0Z50NA4	95440-4E410	TVI0G50N1A
			YES	95440-4E411	TVI0Z50NA5 TVI0Z50NA6 TVI0Z50NA7	95440-4E411	TVI0G50N10
EQUUS (VI FL)	Tau 5.0 GDI	A8TR1	YES	95440-4EBC0	TVI0G50NH1 TVI0G50NH2	95440-4EBC0	TVI0G50NH3
GENE-SIS SEDAN (BK FL)	Theta 2.0	A8LR1	NO	95440-4F030	TBK0C20NC0 TBK0C20NC1	95440-4F030	TBK0M20N1A
			YES	95440-4F031	TBK0C20NC2 TBK0C20NC3 TBK0C20NC4 TBK0C20NC5	95440-4F032	TBK0M20NH1
	Lambda 3.8 GDI	A8LR1	NO	95440-4F120	TBK0Z38NC0	95440-4F120	TBK0G38N1A
			YES	95440-4F121	TBK0Z38NC1 TBK0Z38NC2 TBK0Z38NC3 TBK0Z38NC4 TBK0Z38NC4	95440-4F122	TBK0G38NH1

SUBJECT:**AUTOMATIC TRANSAXLE TCM UPDATE****SERVICE PROCEDURE:**

1. Determine if the vehicle is within the Applicable Production Date as shown on Page 1.
2. Check the ID and Code number on the transmission tag as shown below to determine if the transmission has an 8LR/B cushion spring.
3. Perform the Auto Mode or Manual Mode Update according to the chart below.

APPLICABLE PRODUCTION DATE	8LR/B CUSHION SPRING	TCM UPDATE
Within	No	Auto Mode
Within	Yes	Manual Mode

TRANSMISSION TAG INFORMATION:**TRANSMISSION INFORMATION:**

NOTE: Transmissions with ID No. and Code No. shown in **red** have the 8LR/B cushion spring. Use this chart to select the correct software for Manual Update, Step 5.

MODEL	T/M TYPE	8LR/B CUSHION SPRING					
		PART #		ID #		CODE #.	
		NO	YES	NO	YES	NO	YES
Genesis Sedan (BH) 5.0L/4.6L Equus (VI) 5.0	A8TR1	45000-4E050	45000-4E060	XA*MB	XA*MD	RT05	RT07
Equus Sedan (VI) 5.0L/4.6L	A8TR1	45000-4E050	45000-4E060	XA*MB	XA*MD	RT05	RT07
Genesis Sedan (BH) 3.8L	A8LR1	45000-4F050	45000-4F070	YA*AB	YA*AH	RL05	RL07
Genesis Coupe (BK) 3.8L		45000-4F400	45000-4F410	YA*FA	YA*FB	RL25	RL27
Genesis Coupe (BK) 2.0L		45000-4F500	45000-4F510	YA*GA	YA*GB	RL26	RL28

GENERAL PRECAUTIONS

- Connect the USB cable between the GDS and the VCI.
- Connect the 16-pin DLC connector from the VCI into the DLC located under the driver's side dash.

**NOTICE**

Make sure the battery icon at the bottom right of the GDS laptop shows at least 50%; if not, charge the GDS or attach a battery charger.

- Turn off all lights (Do not leave the headlight switch in auto mode) and all accessories (including heater/air conditioner/fan, audio, heated seats, rear defroster, etc) to ensure the battery will not be discharged during the update.
- Perform the update with the ignition key in the ON position. (Turn the ignition key to the ON position or press the Start-Stop Button two times without depressing the brake pedal).
- Do not disconnect any cables connected to the vehicle or the GDS during the update.
- Do not start the engine or turn the ignition switch OFF during the update.

NOTICE

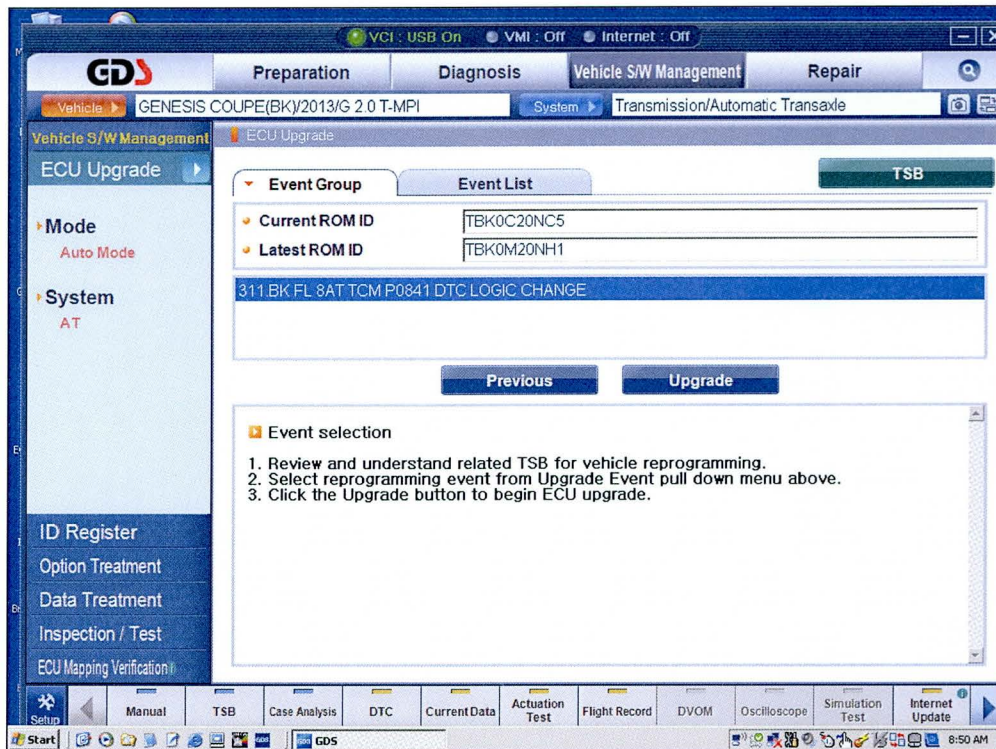
Confirm your GDS has the most recent version. If not, connect the GDS to an Internet port, open the GDS home page and select "Update". Refer to instructions on hmaservice.com if necessary.

NOTICE

If you encounter GDS related problems, call the GIT Helpline at 888-437-0308.

GDS AUTO MODE TCM UPDATE PROCEDURE

1. From the GDS home page, select **ECU Upgrade**. If necessary, select the VIN.
2. Select **AT** as the system and then select **OK**.
3. Select **Auto Mode** and then select **Next**.
4. From the **System** tab, select **AT** and then select **OK**. The GDS will read the ROM ID. Confirm the ROM is applicable as shown on Page 1, "ROM ID Information".
5. One of the following update events will display. Select the appropriate update event and select **Upgrade**.
 - 309.BH 8AT TCM P0841 DTC LOGIC CHANGE
 - 310.VI 8AT TCM P0841 DTC LOGIC CHANGE
 - 311.BK 8AT TCM P0841 DTC LOGIC CHANGE



6. If the screen indicates "**Voltage is OK**", select **OK**. If not, select **CANCEL** and charge the vehicle battery by running the engine for 10 minutes.
7. Updating will occur until 100% is reached on the bar graph. At the prompt, turn the ignition key OFF for 10 seconds, then turn it ON and select **OK**.
8. The GDS will confirm that TCM reprogramming is successfully finished. Select **OK**.
9. If the TCM update was not successful, go to **GDS MANUAL MODE TCM UPDATE**.
10. Check for Diagnostic Trouble Codes and erase any DTC.
11. Erase the DTC in the BlueLink system according to TSB 12-BE-005-2
12. Reset the automatic transmission adaptive values using A/T menu and "Option Treatment"

GDS MANUAL MODE TCM UPDATE PROCEDURE:**NOTICE**

In the event of AUTO MODE update failure (after the GDS initiated the progress bar):

- You must attempt MANUAL MODE. Use the TCM P/N from the vehicle's TCM label if the correct TCM P/N is not clear from the ROM ID table.
- If the automatic upgrade fails, turn the ignition key OFF and disconnect the ECM/TCM connectors for about 10 minutes. Turn the key to the ON position and then perform the manual upgrade.

1. From the GDS home page, select **ECU Upgrade**. If necessary, select the VIN.
2. Select **AT** as the system and then select **OK**.
3. Select **Manual Mode** and then select **NEXT**.
4. From the **System** tab, select **AT** and then select **NEXT**.
5. Event #309, #310 or #311 will display. Select the appropriate event and select **Next**.
6. Select the appropriate TCM part number with reference to the ROM ID Information Table and select **Upgrade**. If you do not know the TCM part number, select **A/T** menu, **Option Treatment** and **System Identification**.

NOTE: If the transmission has an 8LR/B cushion spring, choose the **8LR/B** software highlighted in red on the screens below.

#309. BH - Genesis

The screenshot displays the GDS ECU Upgrade interface for a Genesis vehicle. The vehicle information is GENESIS(BH)2013/G 3.8 GDI, and the system selected is Transmission/Automatic Transaxle. The interface shows the 'Event List' with two entries:

Event	Event List
Current ROM ID	
Latest ROM ID	TBH0G38N1A
	BH 3.8 GDI 8AT TCM : 95440-4F220
	BH 3.8 GDI 8AT TCM(8LR/C) : 95440-4F221

The second entry, 'BH 3.8 GDI 8AT TCM(8LR/C) : 95440-4F221', is highlighted in red. The interface also includes buttons for 'Previous' and 'Upgrade'.

#310: VI - Equus

Vehicle EQUUS(VI)/2014/G 5.0 GDI System Transmission/Automatic Transaxle

Vehicle S/W Management ECU Upgrade

ECU Upgrade

Event Event List TSB

Current ROM ID

Latest ROM ID TVI0G50N1A

VI 5.0 GDI 8AT TCM : 95440-4E410

VI 5.0 GDI 8AT TCM(8LR/C) : 95440-4E411

VI FL 5.0 GDI 8AT TCM(8LR/C) : 95440-4EBC0

Previous Upgrade

NOTE: VI FL 5.0 GDI = 2014 VI Facelift

#311.BK – Genesis Coupe:

Vehicle GENESIS COUPE(BK)/2013/G 2.0 T-MPI System Transmission/Automatic Transaxle

Vehicle S/W Management ECU Upgrade

ECU Upgrade

Event Event List TSB

Current ROM ID

Latest ROM ID TBK0M20N1A

BK FL 2.0 8AT TCM : 95440-4F030

BK FL 2.0 8AT TCM(8LR/C) : 95440-4F031

Previous Upgrade

6. Enter the Password and click **OK**. The part number can be found on the PCM label.

309.BH – Genesis Sedan:

MENU	PASSWORD
BH 3.8 GDI 8AT TCM : 95440-4F220	4220
BH 3.8 GDI 8AT TCM(8LR/C) : 95440-4F221	4221
BH 4.6 MPI 8AT TCM : 95440-4E220	4222
BH 4.6 MPI 8AT TCM(8LR/C) : 95440-4E221	4223
BH 5.0 GDI 8AT TCM : 95440-4E200	4200
BH 5.0 GDI 8AT TCM(8LR/C) : 95440-4E201	4201

#310.VI - Equus

MENU	PASSWORD
VI 5.0 GDI 8AT TCM : 95440-4E410	4410
VI 5.0 GDI 8AT TCM(8LR/C) : 95440-4E411	4411
VI FL 5.0 GDI 8AT TCM(8LR/C) : 95440-4EBC0	4040

#311.BK FL – Genesis Coupe

MENU	PASSWORD
BK FL 2.0 8AT TCM : 95440-4F030	4030
BK FL 2.0 8AT TCM(8LR/C) : 95440-4F031	4031
BK FL 3.8 GDI 8AT TCM : 95440-4F120	4120
BK FL 3.8 GDI 8AT TCM(8LR/C) : 95440-4F121	4121

7. If the “**Voltage is OK**”, select **OK**. If not, select **CANCEL** and charge the vehicle battery.
8. The remaining steps are the same as Step 7~12 of the Auto Procedure.