

2AZ-FE Engine Oil Consumption Inspection Procedure

Service Category Engine/Hybrid System

Section Lubrication

Market USA

Scion Supports
 ASE Certification 

Applicability

YEAR(S)	MODEL(S)	ADDITIONAL INFORMATION
2007 – 2009	tC	Engine(s): 2AZ VDS(s): DE167
2007	tC	Engine(s): 2AZ VDS(s): DE177
2008 – 2009	xB	Engine(s): 2AZ VDS(s): KE50E

Introduction

Some 2007 – 2009 model year tC and xB vehicles equipped with 2AZ-FE engines may exhibit engine oil consumption. The piston assembly has been changed to minimize oil consumption. Use the Inspection Procedure in this bulletin to confirm this condition.

Production Change Information

This bulletin applies to vehicles produced **BEFORE** the Production Change Effective VINs shown below.

MODEL	PLANT	ENGINE	PRODUCTION CHANGE EFFECTIVE VIN
tC	Tsutsumi	2AZ-FE	JTKDE167#90286964
xB			JTLKE50E#91077955

Warranty Information

OP CODE	DESCRIPTION	TIME	OFP	T1	T2
N/A	Not Applicable to Warranty	–	–	–	–

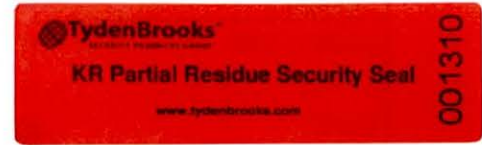
2AZ-FE Engine Oil Consumption Inspection Procedure

Required Tools & Equipment

REQUIRED TOOLS & MATERIAL	QTY
ILSAC GF-4 Multi-grade SAE 0W-20 or 5W-20	3.0 U.S. qts (2.8 liters)
Paint Pen, Tamper Tape, Zip Ties or Equivalent (for indicating tampering)	As Needed

NOTE

Scion recommends TydenBrooks™
55 x 20 mm KR Partial Residue Security Seals.
(Contact TydenBrooks™ at
<http://www.tydenbrooks.com> for ordering information.)



NOTE

Inspection Procedure

NOTE

- In some cases, a P030# (cylinder # misfire detected) DTC may also be set as a result of oil consumption.
- This bulletin does NOT cover the cost of an oil change. If the vehicle is approaching Toyota recommended service interval mileage at the start of the test, recommend an oil change at customer cost to ensure valid test results.

Confirm Engine Oil Consumption Condition

1. Confirm customer complaint and request for Engine Oil Consumption Test.
2. Fill oil to "Full" mark shown on dipstick.
3. Mark the following locations to prevent/indicate tampering during the test.
 - Dipstick
 - Oil Drain Plug
 - Fill Cap
 - Oil Cooler Line
 - Oil Filter

HINT

Use paint pen, tamper tape, zip ties, or equivalent on locations specified above.

2AZ-FE Engine Oil Consumption Inspection Procedure

Inspection Procedure

Confirm Engine Oil Consumption Condition (Continued)

NOTE

Scion recommends TydenBrooks™ 55 x 20 mm KR Partial Residue Security Seals, as shown in Figures 1 and 2.

Figure 1. Oil Pan with Tamper Tape Applied

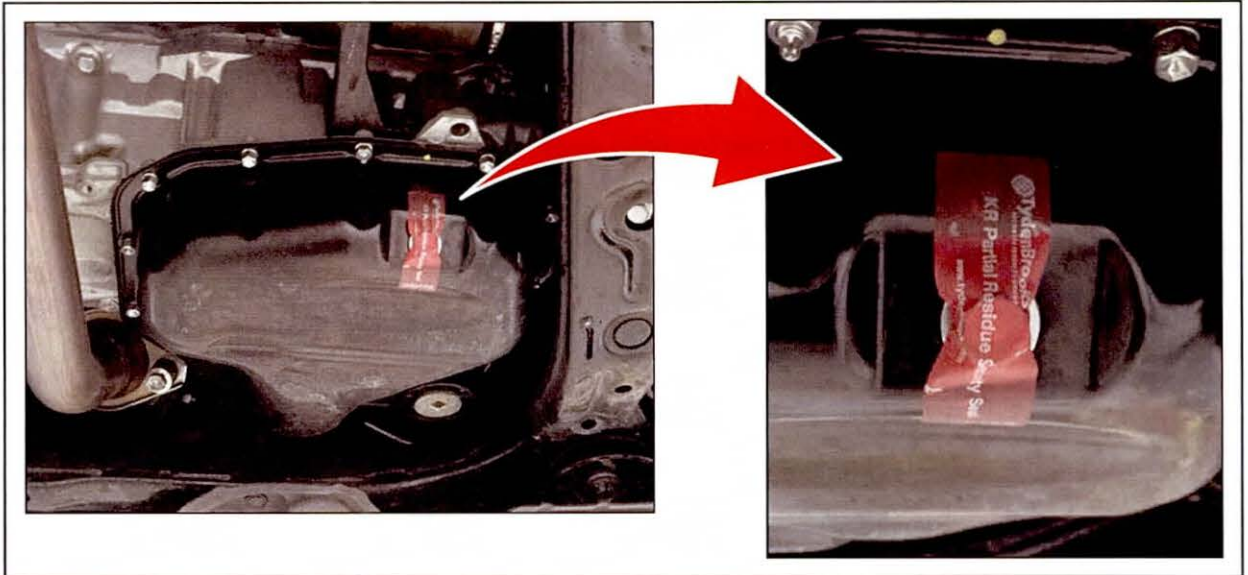
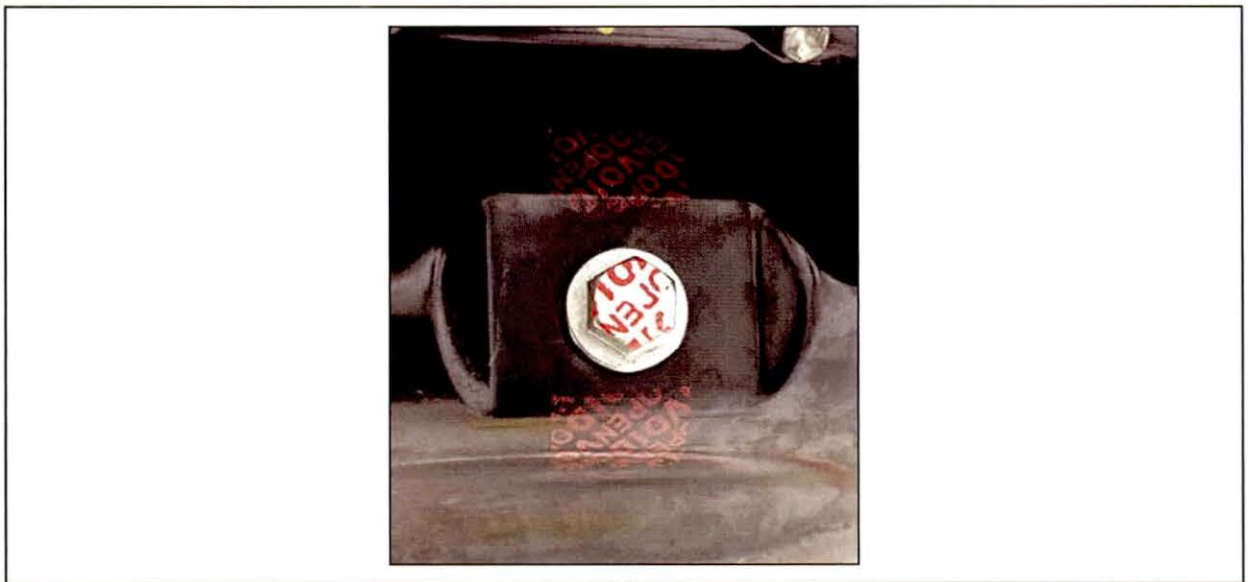


Figure 2. Indication of Tamper Tape Removal



2AZ-FE Engine Oil Consumption Inspection Procedure

Inspection Procedure

Confirm Engine Oil Consumption Condition (Continued)

4. Complete Section A of the “*Engine Oil Consumption Test*” at the end of this bulletin.

NOTE

Attach the completed “*Engine Oil Consumption Test*” to Repair Order. It will be used later in the Inspection Procedure. This form will also be required for warranty submission.

5. Return the vehicle to the customer advising them to return for inspection in 1100 – 1300 miles.

NOTE

Advise customer if they do NOT return inside the 1100 – 1300 mile range, the results will be void.

When Vehicle Returns after 1100 – 1300 Miles

1. Check the dipstick to confirm oil level is NOT full.
 - If full, this bulletin does NOT apply. Return the vehicle to the customer.
 - If NOT full, proceed to step 2.
2. Add 1 quart of oil from the quart container.

IMPORTANT

Fill engine with oil from 1 quart container to ensure accurate volume measurement.

3. Start engine and warm up to operating temperature.
4. Turn OFF the engine, and let the vehicle rest for 5 minutes.
5. Check the dipstick to confirm oil level.
 - If **above** full, this bulletin does NOT apply. Drain to the “Full” level, remove any tamper tape residue from the vehicle, and return to the customer.
 - If **below** full, follow the repair procedure outlined in Service Bulletin No. S-SB-0024-11, “2AZ-FE Engine Oil Consumption.”
6. Complete Section B of the “*Engine Oil Consumption Test*” at the end of this bulletin.

2AZ-FE Engine Oil Consumption Inspection Procedure

Engine Oil Consumption Test

COMPLETE AT TIME OF CUSTOMER COMPLAINT		CLICK HERE for Interactive Form	
VIN:			
Model:		Model Year:	

SECTION A: TESTING PROCEDURE PART 1			
1. Mileage of Vehicle:			
2. What was used to prevent/indicate tampering (paint pen, tamper tape, zip ties, etc.)?		4. Please indicate oil level on Dipstick below after filling to "Full."	
3. Please initial to indicate the following locations were marked to prevent/indicate tampering.			
a. Dipstick			
b. Oil Drain Plug			
c. Fill Cap			
d. Oil Cooler Line			
e. Oil Filter			
5. I certify that the above information in Section A of this form is accurate.			
Print Name:			
Signature:		Date:	
<p>NOTE Keep this form attached to Repair Order. Additional information will be needed (Section B) when the vehicle returns.</p>			

SECTION B: TESTING PROCEDURE PART 2			
1. Mileage of Vehicle:			
<p>NOTE If mileage difference between section A and B is NOT within 1100 – 1300 miles, test results are <u>void</u>.</p>			
2. Please initial to confirm the following locations were NOT tampered with.		3. After adding 1 quart oil to vehicle (from quart container) indicate oil level below.	
<p>NOTE If locations below appear to be tampered with, write "Void" in box.</p>			
a. Dipstick			
b. Oil Drain Plug			
c. Fill Cap			
d. Oil Cooler Line			
e. Oil Filter			
4. I certify that the above information in Section B of this form is accurate.			
Print Name:			
Signature:		Date:	