

NUMBER: 23-029-13
GROUP: Body
DATE: August 06, 2013

This bulletin is supplied as technical information only and is not an authorization for repair. No part of this publication may be reproduced, stored in a retrieval system, or transmitted, in any form or by any means, electronic, mechanical, photocopying, or otherwise, without written permission of Chrysler Group LLC.

SUBJECT:

Side Door Glass Is Inoperable, Binds And/Or Moves Slow

OVERVIEW:

This bulletin involves inspecting the door glass guide for excessive material and if necessary replacing the door glass and glass run weatherstrip.

MODELS:

2012- 2013 FF Fiat 500

NOTE: This bulletin applies to vehicles built prior to September 14, 2012 (MDH 0914XX).

SYMPTOM/CONDITION:

Side Door Glass Is Inoperable, Binds And/Or Moves Slow.

DIAGNOSIS:

If the customer describes the Symptom/Condition, proceed to the repair procedure.

PARTS REQUIRED:

Qty.	Part No.	Description
1 (AR)	04816693AC	Glass Assembly (Left)
1 (AR)	04816692AC	Glass Assembly (Right)
1 (AR)	68070049AG	Glass Run/Weatherstrip Assembly (Left)
1 (AR)	68070048AG	Glass Run/Weatherstrip Assembly (Right)

SPECIAL TOOLS/EQUIPMENT REQUIRED:

C-4755	Trim Stick
--------	------------

REPAIR PROCEDURE

1. Remove the suspect left and/or right side door glass. Refer to the detailed removal procedures available in DealerConnect>TechCONNECT> under: Service Info> 23-Body> Door - Front > GLASS, Door> Removal.

NOTE: The door glass must be lowered enough to drop the rear upper plastic bracket/guide out the bottom of the door glass run. The window regulator may need to be removed if the glass can not be lowered safely past/below the regulator (**Fig. 1**).

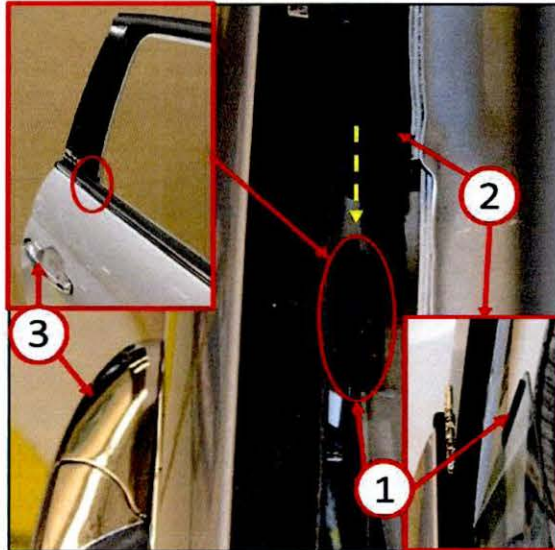


Fig. 1 Glass Removal

- 1 - Glass Guide
 - 2 - Glass Run Weatherstrip
 - 3 - Exterior Door Handle
-

2. Inspect the suspect door glass plastic bracket/guide (2) for excessive material at the plastic/sonic weld (3) (Fig. 2).

NOTE: Door glass plastic bracket/guide should be flush or have no more than a maximum of 0.2mm protrusion at the plastic/sonic weld.

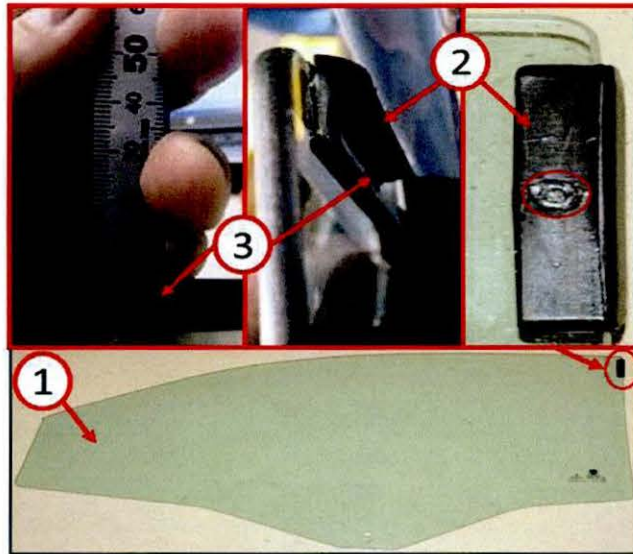


Fig. 2 Glass Guide Inspection

- 1 - Door Glass
- 2 - Door Glass Guide
- 3 - Sonic/Plastic Weld (Glass Guide)

-
3. Does the window bracket/guide have excessive material protrusion?
 - a. Yes>>>Replace the suspect left and/or right side door glass and weatherstrip run(s). Proceed to [Step #4](#).
 - b. No>>> Further diagnosis required. Proceed to [Step #6](#) to reinstall the door glass.

4. Remove the upper rear push clip (1) and glass channel from behind the door rear applique (2) to remove the rear section (3) of the glass weatherstrip run (Fig. 3).

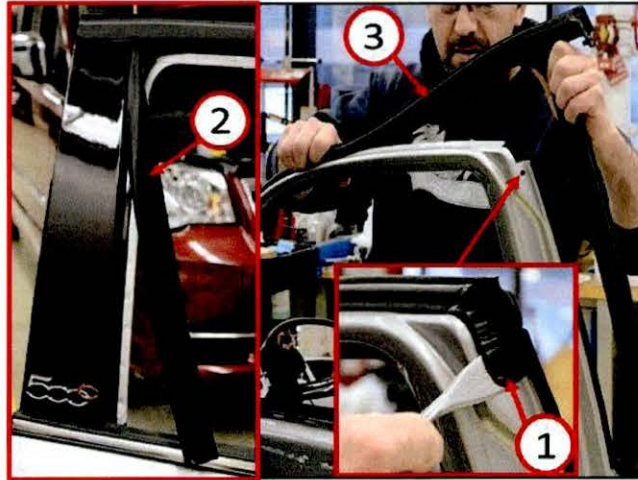


Fig. 3 Glass Run Weatherstrip Removal

- 1 - Push Clip Rear Location (Glass Weatherstrip Run)
 - 2 - Glass Channel (Glass Weatherstrip Run)
 - 3 - Glass Weatherstrip Run (Rear Section)
-

5. Remove the front push clip (1) and remove the front portion of the glass weatherstrip run (2) from around the door front applique just forward of the door mirror (3) (Fig. 4).



Fig. 4 Glass Run Weatherstrip Removal

1 - Push Clip Front Location (Glass Weatherstrip Run)

2 - Glass Weatherstrip Run (Front Section)

3 - Door Mirror

6. Install the left and/or right door glass. Refer to the detailed installation procedures available in DealerConnect>TechCONNECT> under: Service Info> 23-Body> Door - Front> GLASS, Door> Installation.

NOTE: The door glass must be lowered enough to allow the rear upper plastic bracket/guide to be inserted in the bottom of the door glass run to prevent damaging the plastic guide. The window regulator may need to be removed if the glass can not be lowered safely past/below the regulator (**Fig. 5**).

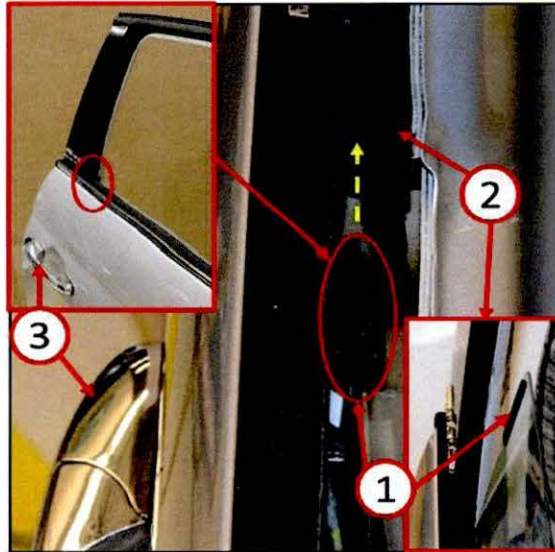


Fig. 5 Glass Installation

- 1 - Glass Guide
 - 2 - Glass Run Weatherstrip
 - 3 - Exterior Door Handle
-

NOTE: Make sure that the inner belt mold (1) is reinstalled correctly as it is possible to be incorrectly installed (upside down). If installed incorrectly, this may affect glass movement once the door panel is reinstalled (Fig. 6).

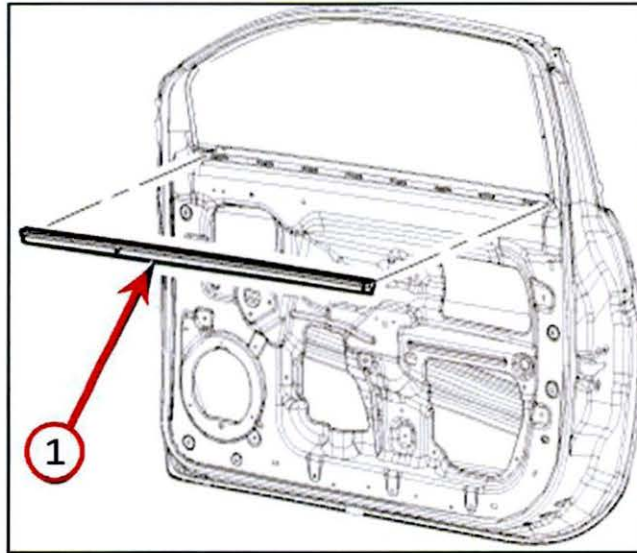


Fig. 6 Inner Belt Mold Installation

1 - Inner Belt Mold / Weatherstrip

-
7. Cycle the window switch to verify window operation.
 8. Does the window move properly?
 - a. Yes>>> Return the vehicle to the customer.
 - b. No>>> Further diagnosis required.

POLICY:

Reimbursable within the provisions of the warranty.

TIME ALLOWANCE:

Labor Operation No:	Description	Skill Category	Amount
23-33-20-9C	Inspect Only (1 - Semi-Skilled)	6 - ELECTRICAL AND BODY SYSTEMS	0.2 Hrs.
23-33-20-9D	Inspect and Replace One Door Weatherstrip and Door Glass (1 - Semi-Skilled)	6 - ELECTRICAL AND BODY SYSTEMS	0.8 Hrs.
23-33-20-9E	Inspect and Replace Both Door Weatherstrips and Door Glass (1 - Semi-Skilled)	6 - ELECTRICAL AND BODY SYSTEMS	1.4 Hrs.