



HYUNDAI

NEW THINKING.
NEW POSSIBILITIES.

Technical Service Bulletin

GROUP

ACCESSORY

NUMBER

14-AC-002-1

DATE

JUNE 2014

MODEL(S)

(See applicable
models below)

SUBJECT: REMOTE ENGINE START (RES) DIAGNOSIS AND REPLACEMENT PARTS

THIS TSB SUPERSEDES TSB 14-AC-002 to provide a Diagnostic Troubleshooting Guide.

Description:

This bulletin describes the diagnosis procedure and list of replacement service parts for the Remote Engine Start (RES) accessory. Follow the troubleshooting guide in this bulletin and then select the appropriate part by referring to the Parts Information and Vehicle Application section. When troubleshooting Remote Engine Start operation, replace only the individual component required for proper operation. Do not order/replace the entire Remote Engine Start Kit.



NOTICE

Do not order the complete Remote Engine Start Accessory Kit to troubleshoot or replace a single component. Order the parts separately.

Warranty Information:

When replacing a part from the Remote Engine Start kit, determine the appropriate operation code by referring to the Parts Information and Vehicle Application section on pages 7 and 8. A list of applicable Nature Codes and Cause Codes is available on page 9.

Circulate To: General Manager, Service Manager, Parts Manager, Warranty Manager, Service Advisors, Technicians, Body Shop Manager, Fleet Repair

SUBJECT: REMOTE ENGINE START (RES) DIAGNOSIS AND REPLACEMENT PARTS

Diagnosis Information:

Follow the troubleshooting guide below, proceeding from left to right until the root cause is found. Replace the appropriate part according to the blue "Replacement Part Suggestion" box by referring to the Parts Information section.

NOTICE

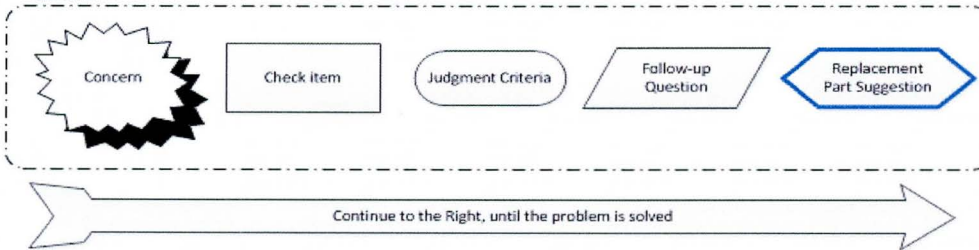
Troubleshooting information and replacement service part for the Remote Engine Start accessory can also be found in the Installation Instructions provided in each Remote Engine Start accessory kit.

NOTICE

TIPS FOR DIAGNOSIS

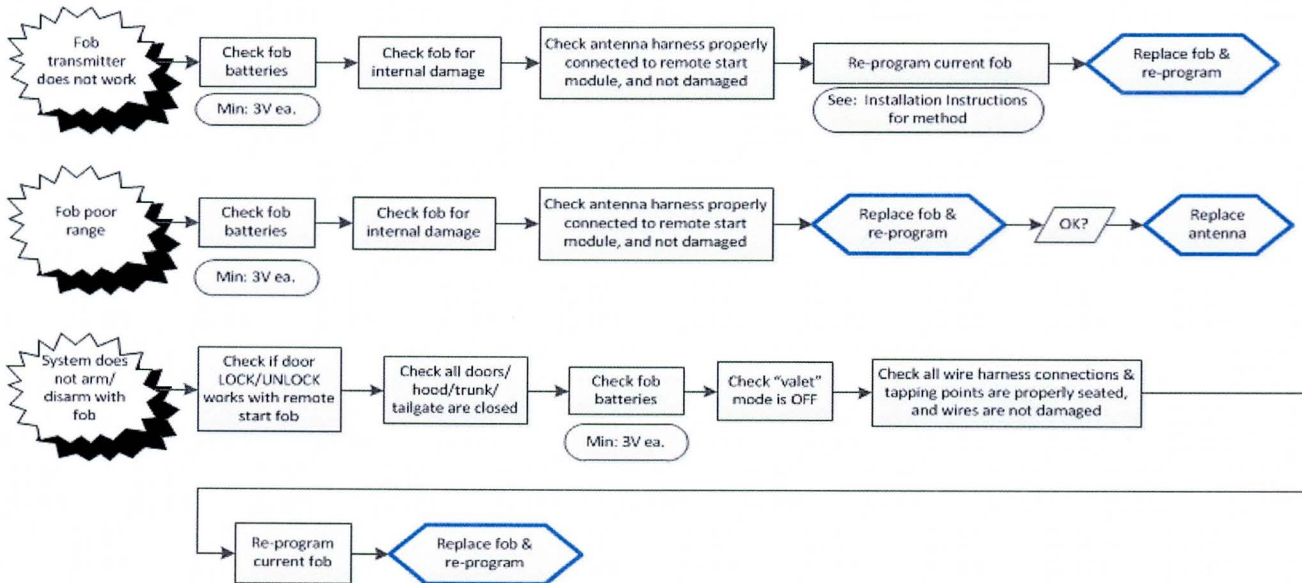
- Always first check the key fob batteries and replace if necessary.
- When checking the wiring harness, be sure to check for pinched/cut wires, bent pins, terminal corrosion or pin tension.
- Use a GDS to verify the trunk/tailgate and hood switches are functioning properly.

Guide

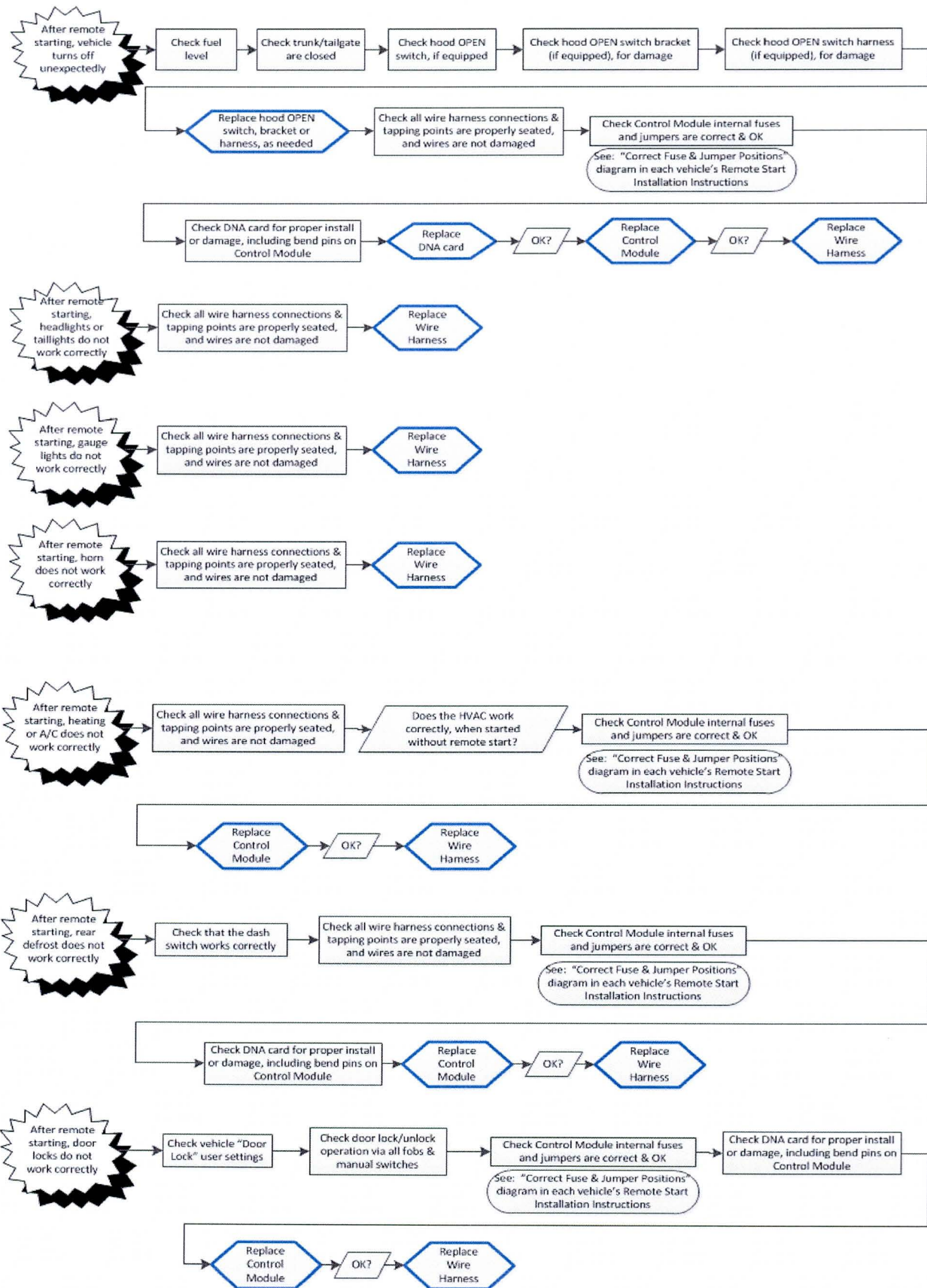


Replacement part P/Ns can be found in each vehicle's Remote Start Installation Instructions.

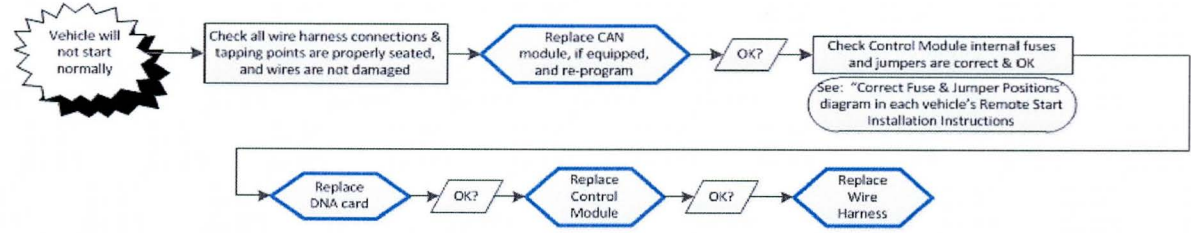
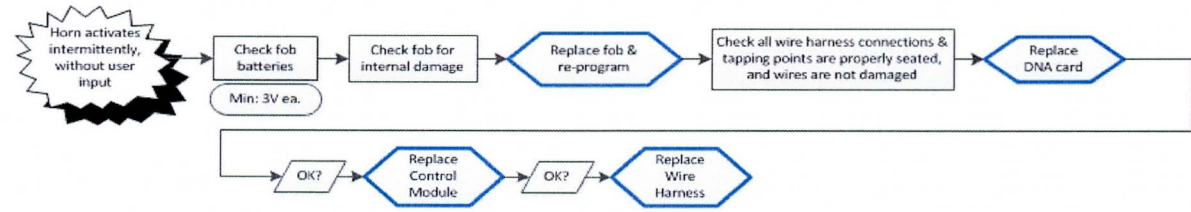
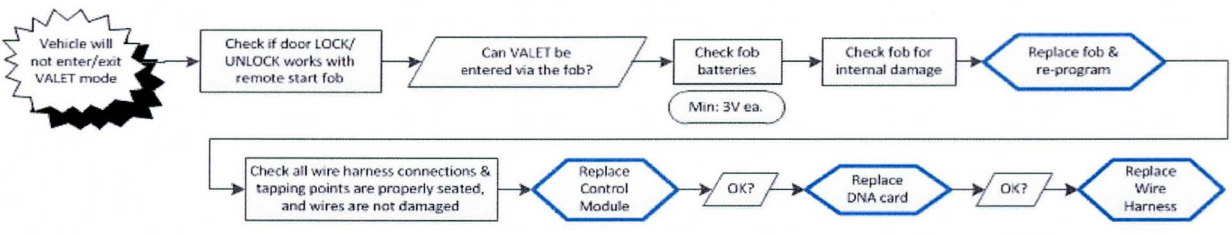
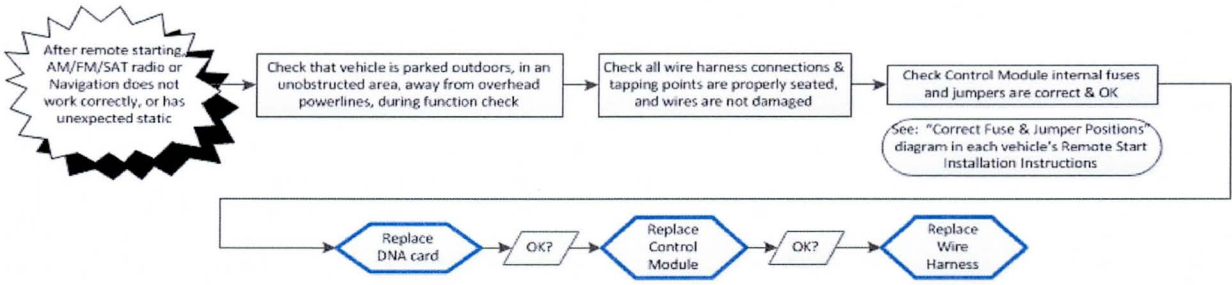
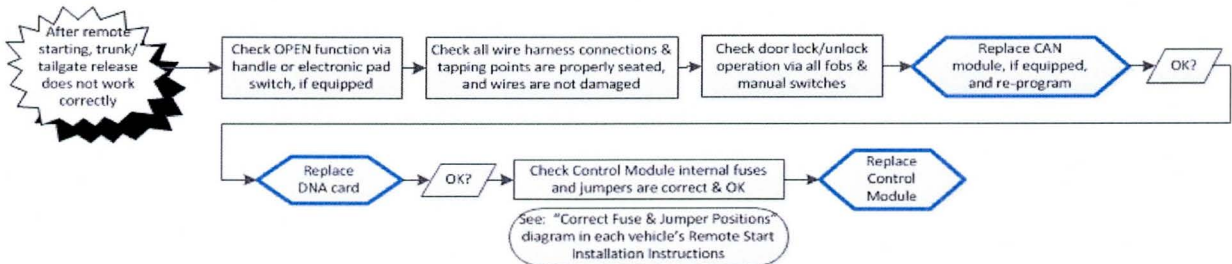
After following the suggested diagnostic steps, if the problem is not resolved, check if any other conditions apply, and then follow those steps.



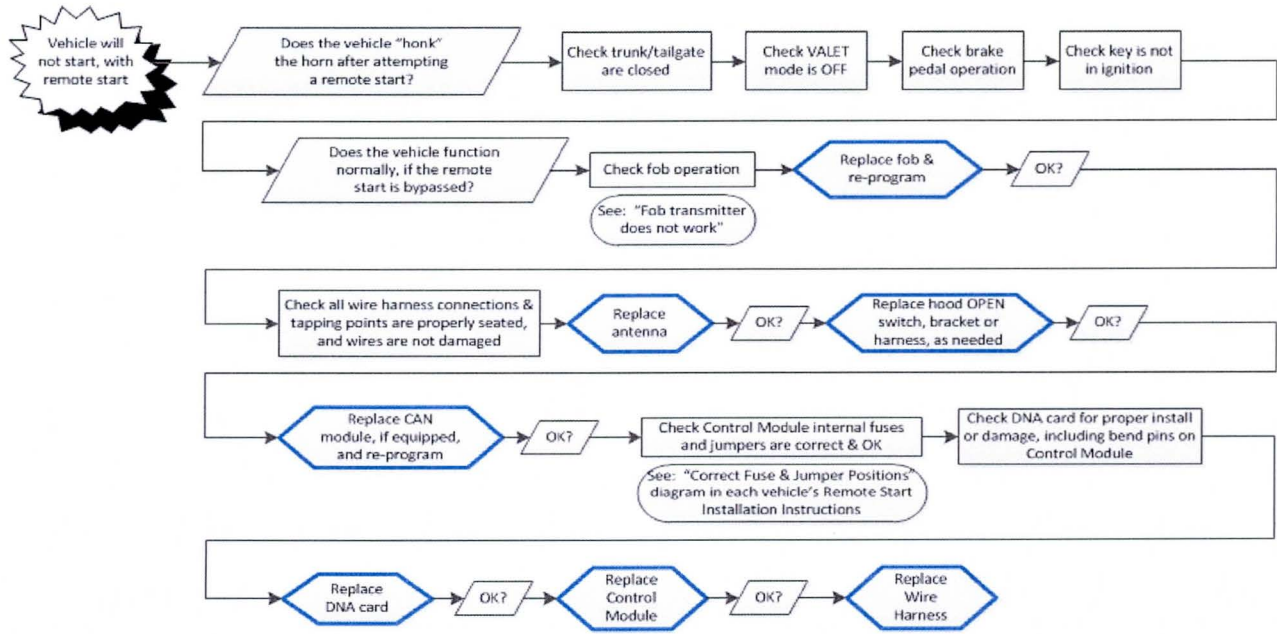
SUBJECT: REMOTE ENGINE START (RES) DIAGNOSIS AND REPLACEMENT PARTS



SUBJECT: REMOTE ENGINE START (RES) DIAGNOSIS AND REPLACEMENT PARTS



SUBJECT: REMOTE ENGINE START (RES) DIAGNOSIS AND REPLACEMENT PARTS



NOTICE

Installation instructions can also be found online at: www.hyundaitechinfo.com
Click on "Service Information", then click on "Accessory Info".

If additional diagnostic assistance is required, contact Hyundai Techline at 1-800-325-6604. For faster service, please complete the Techline Diagnostic Sheet prior to calling. The Techline Diagnostic Sheet is found online at: www.hyundaitechinfo.com. Click on "Technical Training", then "Techline Procedures".

SUBJECT: REMOTE ENGINE START (RES) DIAGNOSIS AND REPLACEMENT PARTS

Replacement Service Parts:

MAIN WIRE HARNESS	ANTENNA	PROGRAM (PGM) BUTTON HARNESS
		
CONTROL MODULE	DNA CARD	CAN MODULE
		
TRANSMITTERS		STOP LAMP SWITCH ADAPTOR HARNESS
		

- The replacement parts in this bulletin are available as separate components.
- When troubleshooting the Remote Engine Start accessory, identify the suspected causal part and determine the correct part number for the model year and vehicle application from the tables in this bulletin.

SUBJECT: REMOTE ENGINE START (RES) DIAGNOSIS AND REPLACEMENT PARTS

Parts Information and Vehicle Application:

MY	Model	Causal Part No.	Part Description	Op Code	Op Time
2010 - 2012	Santa Fe (CM)	00056-ADU00	TRANSMITTER (4-Button)	A0603R02	0.3
2010 - 2013	Tucson (LM)				
2012 - 2014	Veloster (FS)	00056-ADU10	TRANSMITTER (6-Button)		
2011 - 2014	Sonata (YF)				
2011 - 2014	Elantra (UD/MD)				
2013 - 2014	Elantra GT (GD)	00056-ADU90	TRANSMITTER (2-Button)		
2013 - 2014	Santa Fe Sport (AN) Santa Fe (NC)				
2010 - 2012	Santa Fe (CM)	00056 ADU20	CONTROL MODULE	A0603R03	0.6
2010 - 2013	Tucson (LM)				
2012 - 2014	Veloster (FS)				
2011 - 2014	Sonata (YF)				
2011 - 2014	Elantra (UD/MD)				
2013 - 2014	Elantra GT (GD)				
2013 - 2014	Santa Fe Sport (AN) Santa Fe (NC)				
2010 - 2012	Santa Fe (CM)	00056 ADU30	DNA CARD	A0603R04	0.6
2010 - 2012	Santa Fe (CM)	00056 ADU31			
2010 - 2013	Tucson (LM)	00056 ADU60			
2012 - 2014	Veloster (FS)	2V056 ADUS1			
2011 - 2013	Sonata (YF)	00056 ADU70			
2014	Sonata (YF)	00056 ADU71			
2011 - 2014	Elantra (UD/MD)	00056 ADU80			
2013 - 2014	Elantra GT (GD)	2V056 ADUS1			
2013 - 2014	Santa Fe Sport (AN) Santa Fe (NC)	4Z056 ADUS1			

SUBJECT: REMOTE ENGINE START (RES) DIAGNOSIS AND REPLACEMENT PARTS

Parts Information and Vehicle Application (con't.):

MY	Model	Causal Part No.	Part Description	Op Code	Op Time
2010 - 2012	Santa Fe (CM)	2B056 ADU10	MAIN WIRE HARNESS	A0603R05	0.6
2010 - 2013	Tucson (LM)	2S056 ADU10			
2012 - 2014	Veloster (FS)	2V056 ADUS2			
2011 - 2014	Sonata (YF)	3S056 ADU10			
2011 - 2014	Elantra (UD/MD)	3X056 ADU10			
2013 - 2014	Santa Fe Sport (AN) Santa Fe (NC)	4Z056 ADUS2			
2010 - 2012	Santa Fe (CM)	00056 ADU40	PROGRAM BUTTON WIRE HARNESS	A0603R06	0.3
2010 - 2013	Tucson (LM)				
2012 - 2014	Veloster (FS)				
2011 - 2014	Sonata (YF)				
2011 - 2014	Elantra (UD/MD)				
2013 - 2014	Santa Fe Sport (AN)				
2013 - 2014	Santa Fe (NC)	00056 ADU40	PROGRAM BUTTON WIRE HARNESS	A0603R06	0.6
2013 - 2014	Elantra GT (GD)				
2010 - 2012	Santa Fe (CM)	00056 ADU50	ANTENNA	A0603R07	0.3
2010 - 2013	Tucson (LM)				
2012 - 2014	Veloster (FS)				
2011 - 2014	Sonata (YF)				
2011 - 2014	Elantra (UD/MD)				
2013 - 2014	Santa Fe Sport (AN) Santa Fe (NC)				
2013 - 2014	Elantra GT (GD)				
2013 - 2014	Santa Fe Sport (AN) Santa Fe (NC)	4Z056 ADUS3	CAN MODULE	A0603R08	0.4
2013 - 2014	Veloster (FS)	00056 ADUS0	STOP LAMP SWITCH ADAPTOR HARNESS	A0603R09	0.3
2013 - 2014	Sonata (YF)				
2014	Santa Fe Sport (AN)	00056 ADUS1			
2013 - 2014	Santa Fe (NC)	00056 ADUS2			
2014	Elantra (UD/MD)				
2014	Elantra GT (GD)				

SUBJECT: REMOTE ENGINE START (RES) DIAGNOSIS AND REPLACEMENT PARTS

Parts Information and Vehicle Application (con't.):

Nature Code	Description	Cause Code	Description
N59	Broken, Crack	C06	Broken, Split, Torn
N66	Electrical Malfunction	C07	Cracked
N94	Inoperative	C15	Poor Contact, Open Circuit
N99	Other	C20	Poor Insulation
		C61	Incorrect Part
		C62	Missing Part
		C99	Other