

Subject

Spots in Window Glass

Market

USA

Service Category

Vehicle Exterior

Section

Window/Glass

Applicability

All Models

APPLICABLE VEHICLES

2010-2014	IS250C	2002-2010	SC430
2012	LFA	2008-2014	LS600H
1997-2006	GS300	2006-2014	IS250
2006-2008	RX400H	2001-2005	IS300
1992-2000	SC300	2008-2011	GS460
2007-2011, 2013-2014	GS450H	1999-2003	RX300
1998-2000	GS400	1991-2000	SC400
2010-2012	HS250H	2013-2014	ES300H
2007-2014	ES350	2007-2014	LS460
2003-2009	GX470	2010-2014	GX460
1998-2007	LX470	2010-2014	RX450H
1996-1997	LX450	2007-2011, 2013-2014	GS350
2011-2014	CT200H	2006-2014	IS350
2007-2014	RX350	2004-2006	RX330
2001-2007	GS430	2010-2014	IS350C
2001-2006	LS430	2008-2014	IS F
2008-2011, 2013-2014	LX570		

CONDITION

The appearance of spots in tempered glass (when viewed at certain angles) is the result of the heat treating and quick quenching process during manufacturing.

- The condition appears as faint shadowy spots and or lines in the glass.
- They become visible in the transmission and in reflection of light off the glass surface.
- The condition is more visible when viewed from an angle, rather than directly facing the glass.
- When polarized sunglasses are worn, they can dramatically enhance the appearance of the spots and lines.
- The spots seem to be easier to see on a sunny day when the light comes from a blue sky or is reflected from clouds. They are less visible on a gray, cloudy day.
- Tempered or heat treated glass can be found on the vehicle side and the back glass areas.
- An example of how the phenomenon appears is shown below.

Subject

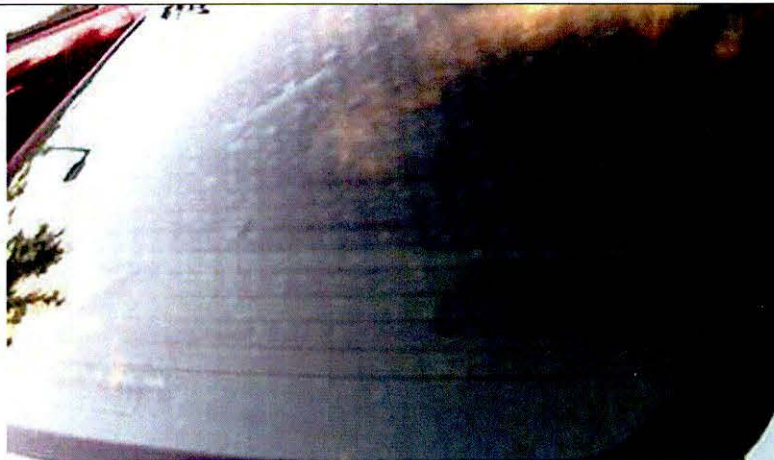
Spots in Window Glass

Market

USA

Applicability

All Models



RECOMMENDATIONS

This is a normal phenomenon for tempered glass and glass exhibiting the condition outlined above should not be replaced.

LINK REFERENCES

This Tech Tip does not contain any link references