

NUMBER: 19-002-14

GROUP: Steering

DATE: February 13, 2014

This bulletin is supplied as technical information only and is not an authorization for repair. No part of this publication may be reproduced, stored in a retrieval system, or transmitted, in any form or by any means, electronic, mechanical, photocopying, or otherwise, without written permission of Chrysler Group LLC.

THIS SERVICE BULLETIN IS ALSO BEING RELEASED AS RAPID RESPONSE TRANSMITTAL (RRT) 14-010. ALL APPLICABLE SOLD AND UN-SOLD RRT VIN's HAVE BEEN LOADED. TO VERIFY THAT THIS RRT SERVICE ACTION IS APPLICABLE TO THE VEHICLE, USE VIP OR PERFORM A VIN SEARCH IN TECHCONNECT. ALL REPAIRS ARE REIMBURSABLE WITHIN THE PROVISIONS OF WARRANTY.

SUBJECT:

Steering Column Squeak / Moan While Turning Wheel

OVERVIEW:

This bulletin involves removing/installing the steering column, removing/installing the bulkhead pass through boot, removing the wiper seal, and applying lubricant to the intermediate shaft bearing sleeve.

MODELS:

2014	LC	Challenger
2014	LD	Charger
2014	LX	300

NOTE: This bulletin applies to vehicles built on or after July 29, 2013 (MDH 0729XX) and on or before September 19, 2013 (MDH 0919XX).

SYMPTOM/CONDITION:

Customer may describe a squeak and/or moan noise while turning the steering wheel. Noise can be heard both while vehicle is stationary or while driving. Noise is typically more noticeable during cold temperatures and may go away when vehicle warms up.

DIAGNOSIS:

If a customer's VIN is listed in VIP or your RRT VIN list, perform the repair. For all other customers that describe the symptom/condition, perform the Repair Procedure.

PARTS REQUIRED:

Qty.	Part No.	Description
1 (AR)	68003883AA	Grease, White Lithium
1 (AR)	06507656AA	SCREW, Hex Flange Head, M8x1.25x40 (LD, LX Only)

Qty.	Part No.	Description
1 (AR)	06506950AA	SCREW, Hex Flange Head, M10x1.50x46.30 (LC Only)

NOTE: Each tube of white lithium will service approximately 3 vehicles (shop supply).

REPAIR PROCEDURE:

1. Remove the steering column assembly (1, 2, 3) from the vehicle. Discard intermediate shaft pinch bolt. Refer to the detailed service procedures available in DealerCONNECT> TechCONNECT under: Service Info> 19 - Steering> Column> Removal (Fig. 1).

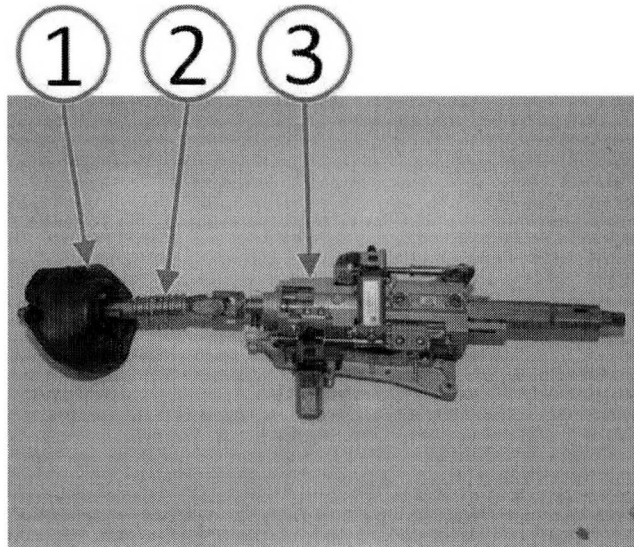


Fig. 1 Steering Column Assembly

- 1 - Bulkhead Pass Through Boot
- 2 - Intermediate Shaft
- 3 - Steering Column

-
2. Use a quick tug action to remove the intermediate shaft bulkhead pass through boot and outer bearing sleeve assembly (1) from the intermediate shaft inner bearing sleeve (2) (Fig. 2).

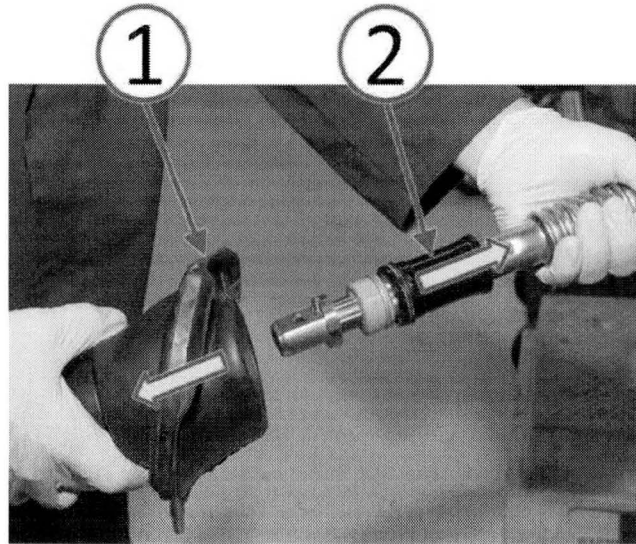


Fig. 2 Remove Boot From Intermediate Shaft

- 1 - Bulkhead Pass Through Boot
- 2 - Inner Bearing Sleeve

-
3. Completely remove the rubber wiper seal (Fig. 3).

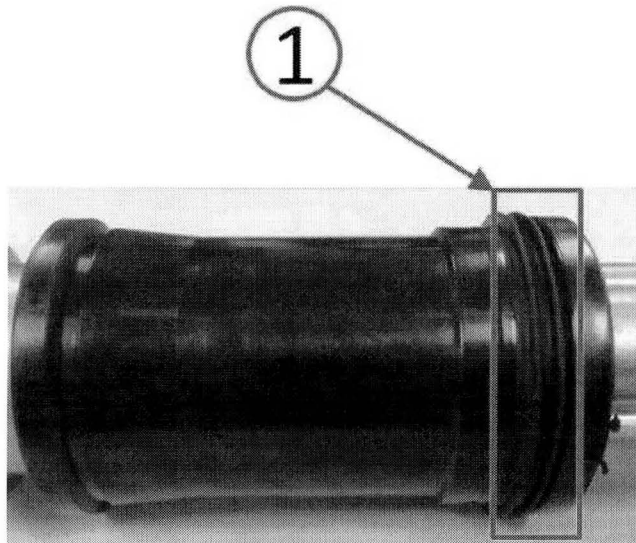


Fig. 3 Wiper Seal To Be Removed

- 1 - Wiper Seal

-
4. Using an appropriate tool, cut and/or scrap the rubber wiper seal from the plastic inner bearing sleeve (Fig. 4).

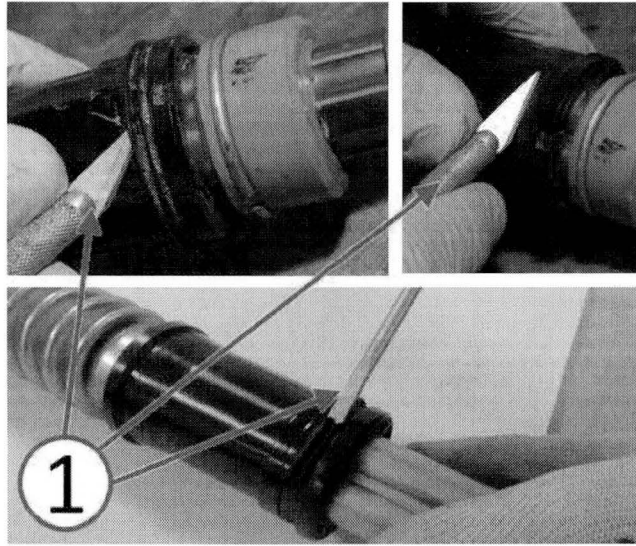


Fig. 4 Wiper Seal Removal

1 - Wiper Seal Removal Tools

-
5. Ensure that the rubber wiper seal (1) has been completely removed from the plastic inner bearing sleeve (2) (Fig. 5).

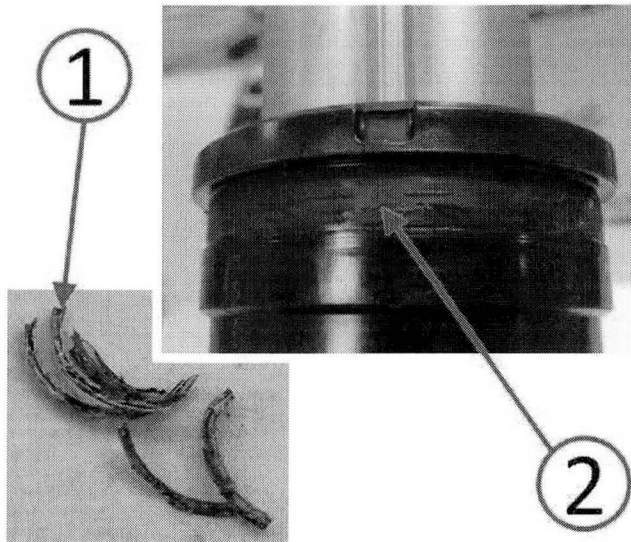


Fig. 5 Wiper Seal Removed

1 - Wiper Seal Pieces

2 - Inner Bearing Sleeve With Wiper Seal Removed

6. Apply white lithium grease to the contact surface at each end of the inner bearing sleeve (Fig. 6).

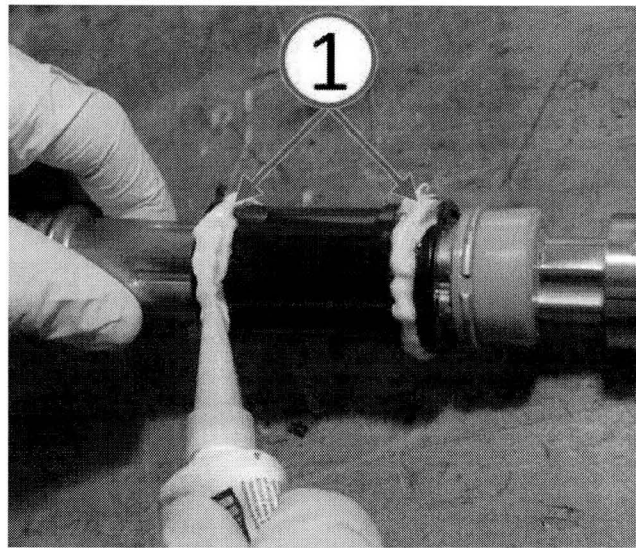


Fig. 6 Apply White Lithium To Inner Bearing Sleeve

1 - White Lithium Grease

7. Apply white lithium grease to the contact surface at each end of the outer bearing sleeve (Fig. 7).

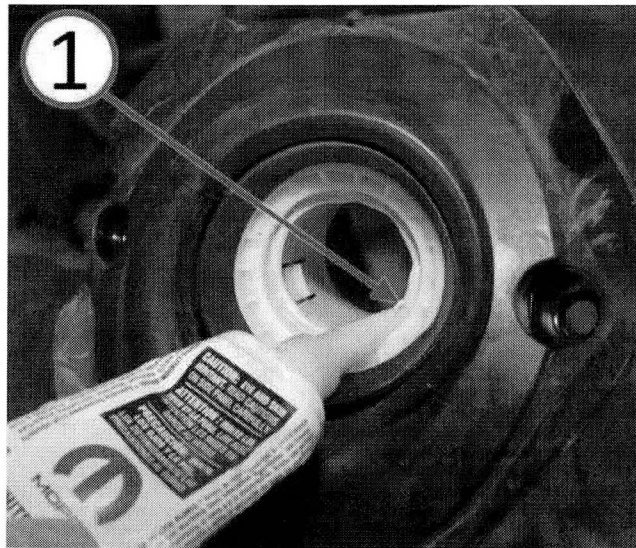


Fig. 7 Apply White Lithium To Outer Bearing Sleeve

1 - White Lithium Grease

8. Use a quick push action to install the intermediate shaft bulkhead pass through boot and outer bearing sleeve assembly (1) to the intermediate shaft inner bearing sleeve (2) (Fig. 8).

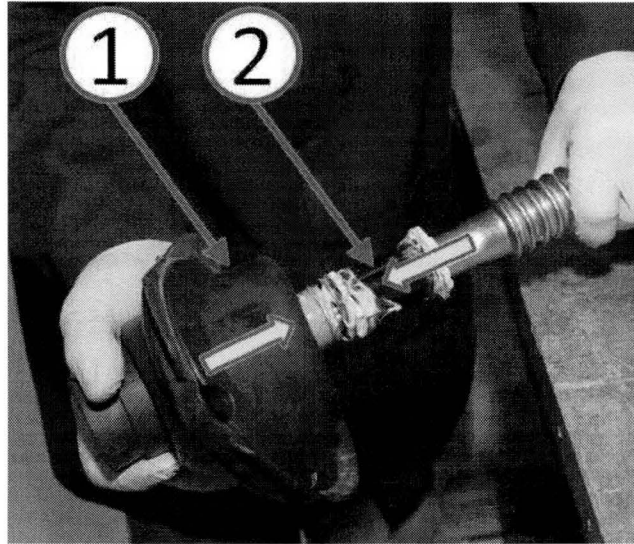


Fig. 8 Install Boot To Intermediate Shaft

- 1 - Bulkhead Pass Through Boot
 - 2 - Inner Bearing Sleeve
-

9. Slide the intermediate shaft bulkhead pass through boot and outer bearing sleeve assembly back and fourth to distribute the white lithium grease and to ensure that the outer bearing sleeve is properly engaged with the inner bearing sleeve (Fig. 9).

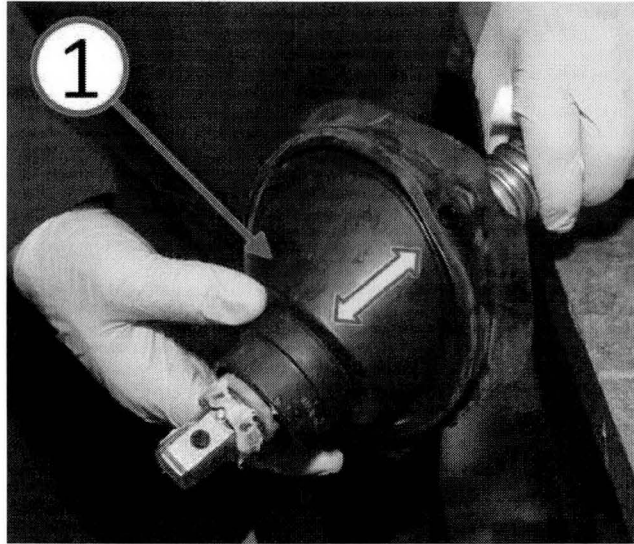


Fig. 9 Check Installation

1 - Bulkhead Pass Through Boot

10. Install the steering column to the vehicle. Use a NEW intermediate shaft pinch bolt. Refer to the detailed service procedures available in DealerCONNECT> TechCONNECT under: Service Info> 19 - Steering> Column> Installation.

POLICY:

Reimbursable within the provisions of the warranty.

TIME ALLOWANCE:

Labor Operation No:	Description	Skill Category	Amount
19-20-83-92	Remove/Install Steering Column, Remove Lip Seal And Lubricate Bearing Sleeve (2 - Skilled)	4 - Chassis Systems	1.0 Hrs.

FAILURE CODE:

ZZ	Service Action
----	----------------