

Technical Service Bulletin



96 False warning by lane change assistant (Audi Side Assist)

96 13 56 2030583/2 May 2, 2013. Supersedes Technical Service Bulletin Group 96 number 12-42 dated September 5, 2012 for reasons listed below.

Model(s)	Year	VIN Range	Vehicle-Specific Equipment
A4/S4	2013	000001-999999	Audi Side Assist
A5/S5	2013	000001-899999	Audi Side Assist
RS 5	2013	900001-999999	Audi Side Assist

Condition

REVISION HISTORY	
Date	Purpose
-	Revised header data (added VIN range) Revised <i>Service</i> (added instructions)
9/5/2012	Initial publication

- Customer complains that Audi Side Assist is providing false warnings (no vehicle is present). Concern may or may not be duplicated.
- No DTCs are present in the Audi Side Assist system.

Technical Background

This condition occurs due to an incorrect hardware set created by the supplier.

Production Solution

Improved hardware introduced into production.

Service

This TSB applies only to A4/S4 sedans and A5/S5/RS 5 coupes. This information does not apply to the A4 allroad. There is a separate TSB for the A4 allroad.

1. Use Guided Fault Finding (GFF) to determine the hardware version, the production date, and the software part number of both the lane change assistance control module, J769, and the lane change assistance control module 2, J770:

Using VAS_PC:

Guided Functions -> Selecting Vehicle System or Function -> 3C - Lane Change Assistance Control Module| J769 -> J769-Lane Change Assist. Ctrl. Mo.,version (RG.96) -> Display identification services Lane Change Assistance Control Module -J768- (and -J770-) (Figure 1).

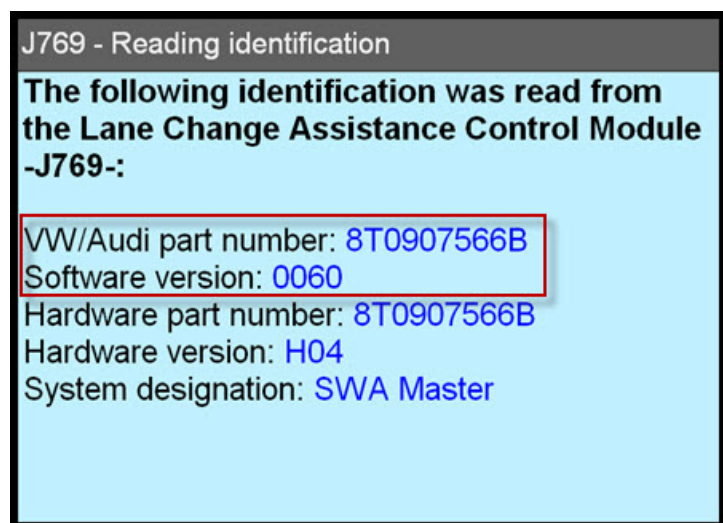


Figure 1. Software part number is identified as “VW/Audi part number” using VAS_PC

Using ODIS:

Start Diagnosis -> Uncheck option for “Guided Fault Finding” --> Select Tab “Control module list” --> Scroll down list to “3C Lane Change Assistant” (ECU option will be greyed out) -> Right click on 3C Lane Change Assistant and select “Identify control module” -> Right click on 3C Lane Change Assistant and select “Select Version” -> Select “3C – Lane Change Assistant (UDS)” -> Right click on 3C Lane Change Assistant and select “Guided Functions” -> Select 2nd option for “J769 Lane Change assist ctrl. mo., version (RG.96)” -> Select Perform -> Select Complete/Continue -> Select Option 1 or 2 for “Displaying identification services Lane Change Assistance Control Module -J769/-J770-” (Figures 2 and 3).

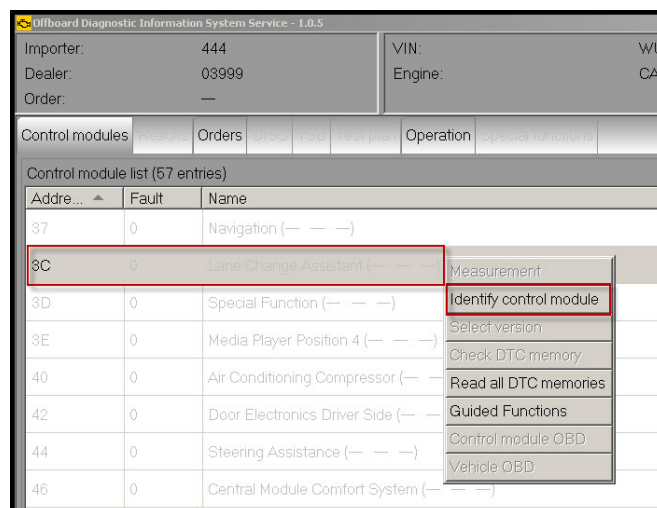


Figure 2. 3C Lane Change Assistant is greyed out until “Identify control module” is selected

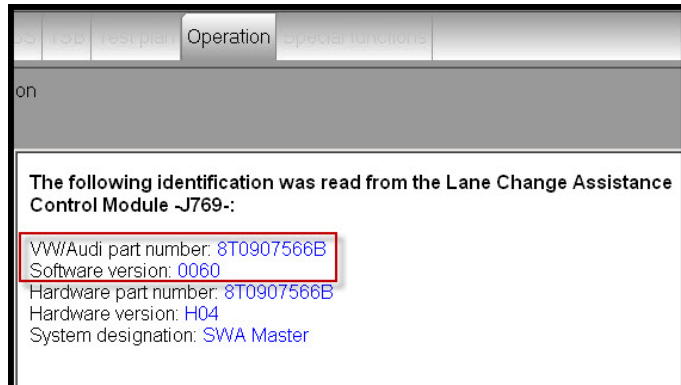


Figure 3. Software part number is identified as “VW/Audi part number” using ODIS

Production Date:

Use option 2, labeled “Advanced identification”, for finding the production date of each control unit (Figure 4).

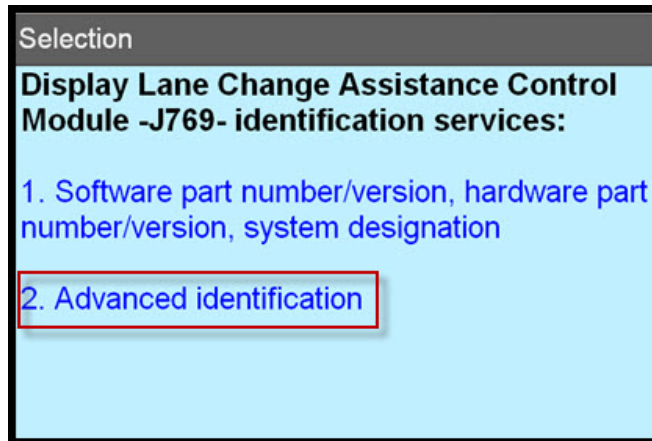


Figure 4. Advanced identification option in VAS_PC

2. Using first the software part numbers, find the matching information on the left side of the table below, and proceed with the corresponding instructions on the right side. Only one set of instructions will apply.

Technical Service Bulletin



<ul style="list-style-type: none">• Software part numbers are: 8T0 907 566 (J769) and 8T0 907 568 (J770).• One or both has hardware version H15.	Replace only the control module with H15 hardware, then recalibrate the Audi Side Assist system.
<ul style="list-style-type: none">• Software part numbers are: 8T0 907 566 (J769) and 8T0 907 568 (J770).• Both have hardware version H16 or higher.	Only recalibrate the system.
<ul style="list-style-type: none">• Software part numbers are: 8T0 907 566 A (J769) and 8T0 907 568 A (J770).• Both have hardware version H16.• At least one has a build date <i>before 3/2/2012</i>.	Replace only the control module that has a build date before 3/2/2012, then recalibrate the system.
<ul style="list-style-type: none">• Software part numbers are: 8T0 907 566 A (J769) and 8T0 907 568 A (J770).• Both have hardware version H16.• Both have a build date <i>after 03/02/2012</i>.	Only recalibrate the system.
<ul style="list-style-type: none">• Software part numbers are: 8T0 907 566 A (J769) and 8T0 907 568 A (J770).• Both have hardware version H17 or higher.	Only recalibrate the system.
<ul style="list-style-type: none">• Software part numbers are: 8T0 907 566 B (J769) and 8T0 907 568 B (J770).	Only recalibrate the system.

Technical Service Bulletin



Warranty

Claim Type:	Use applicable claim type. If vehicle is outside any warranty, this Technical Service Bulletin is informational only.		
Service Number:	9635		
Damage Code:	0040		
Labor Operations:	Adjust control units for lane changing assistant (with backup camera adjustment included)	9635 1550	70 TU
	OR		
	Remove and install rear bumper cover	6369 1900	70 TU
	Remove and install 1 control unit for lane changing assistant	9635 1950	10 TU
	Adjust control units for lane changing assistant	9635 1550	70 TU
	OR		
	Remove and install rear bumper cover	6369 1900	70 TU
	Remove and install 2 control units for lane changing assistant	9635 2050	20 TU
	Adjust control units for lane changing assistant	9635 1550	70 TU
Diagnostic Time:	GFF	0150 0000	Time stated on diagnostic protocol (Max 120 TU)
	Road test prior to service procedure	0121 0002	10 TU
	Road test after service procedure	0121 0004	10 TU
	Technical diagnosis at dealer's discretion (Refer to Section 2.2.1.2 and Audi Warranty Online for DADP allowance details)		
Claim Comment:	As per TSB #2030583/2		

All warranty claims submitted for payment must be in accordance with the *Audi Warranty Policies and Procedures Manual*. Claims are subject to review or audit by Audi Warranty.



Additional Information

All parts and service references provided in this TSB are subject to change and/or removal. Always check with your Parts Department and service manuals for the latest information.