

Technical Bulletin

Model(s)	Year	Eng. Code	Trans. Code	VIN Range From	VIN Range To
Routan	2012	3.6L (CJRA)	All	All	All

Condition

01 13 08 March 5, 2013 2030688

MIL ON DTC P0108 Manifold Absolute Pressure Sensor Circuit High Stored in ECM Fault Memory

DTC	Description
P0108	Manifold Absolute Pressure Sensor Circuit High

 **Note:**

This bulletin applies to vehicles equipped with a 3.6L engine built before June 25, 2012.

Technical Background

SYMPTOM/CONDITION:

- The customer may experience a Malfunction Indicator Lamp (MIL) illumination. Upon further investigation the Technician may find that P0108 - Manifold Absolute Pressure Sensor Circuit High has been set active or stored.
- Update programming of the Powertrain Control Module (PCM) with improved software to correct Diagnostic Trouble Code (DTC) P0108.

 **Tip:**

- StarMOBILE™ UPDATE PROGRAMMING FILES FOR THIS BULLETIN MUST BE RETRIEVED FROM THE INTERNET.
- StarMOBILE SOFTWARE LEVEL MUST BE AT RELEASE 10.01 OR HIGHER FOR THIS BULLETIN.
- StarMOBILE STANDALONE MODE OR StarMOBILE DESKTOP CLIENT MAY ALSO BE USED TO PERFORM THIS PROCEDURE.

Technical Bulletin

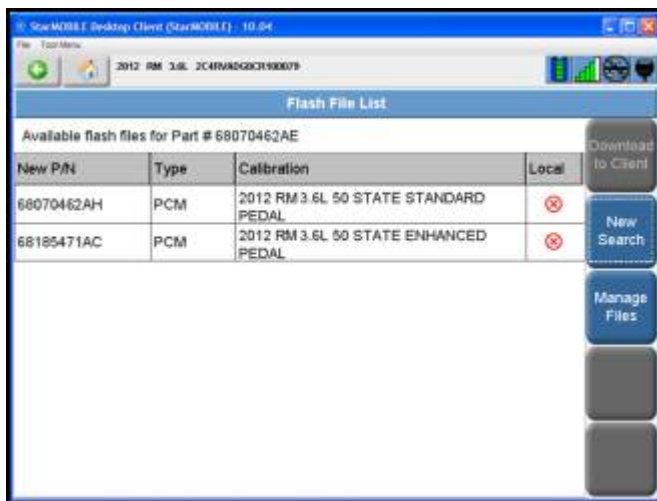
Production Solution

Improved PCM software has been introduced in production as of June 25, 2012.

Service

Update programming of the Powertrain Control Module (PCM) with new software.

- Using a StarMOBILE™ with ElsaWeb and the appropriate Diagnostic Procedures, verify all engine systems are functioning as designed. If DTC's are present, record them on the repair order and repair as necessary before proceeding with this bulletin. If the customer describes the Symptom/Condition, or it can be reproduced, perform the Repair Procedure.



Note:

On some vehicles there are two updates available.

If there are two updates available, as shown on this screen (left), **ONLY** the **68070462AH** software should be selected and installed.

Installing the wrong software update into the PCM will change the driving characteristics of the vehicle and can result in a customer complaint.

Selecting the wrong installation of the software is irreversible and will not be covered under warranty.

REPAIR PROCEDURE

 **Note:**

Install a battery charger to ensure battery voltage does not drop below 13.2 volts. Do not allow the charging voltage to climb above 13.5 volts during the programming process.

If this flash process is interrupted / aborted, the flash should be restarted.

- Reprogram the Powertrain Control Module using the StarMOBILE with the latest software.

Technical Bulletin

After PCM reprogramming

- Clear the Variable Line Pressure (VLP) Counters, found in the Misc. Function menu for the PCM / ECU.
- Perform the Quick Learn function, found in the Misc. Function menu for the PCM / ECU.
- Clear any DTC's that may have been set in other modules due to reprogramming.

Warranty



Note:

All Routan pre and post road test and StarMOBILE time units are included in the labor operation. Therefore, no road test or Star MOBILE time units will appear in the designated area within the warranty table.

To determine if this procedure is covered under Warranty, always refer to the Warranty Policies and Procedures Manual ¹⁾					
Model(s)	Year(s)	Eng. Code(s)	Trans. Code(s)	VIN Range From	VIN Range To
Routan	2012	3.6L	All	All	All
SAGA Coding					
Claim Type:			Use applicable Claim Type ¹⁾		
Service Number:	Damage Code	HST		Damage Location (Depends on Service No.)	
2470	0039	CWM2030688		Use applicable when indicated in ElsaWeb (L/R)	
Parts Manufacturer		Routan		USM ²⁾	
Labor Operation ³⁾: Program Powertrain Control Module			24702599 = 40 TU		
Causal Part: Select Labor Operation			24702599		
Diagnostic Time ⁴⁾					
GFF Time expenditure	01500000 = 00 TU max.			NO	
Road Test	01210002 01210004			NO	



Technical Bulletin

Technical Diagnosis	01320000 = 00 TU max.	NO
Claim Comment: Input "As per Technical Bulletin 2030688" in comment section of Warranty Claim.		
1) Vehicle may be outside any Warranty in which case this Technical Bulletin is informational only		
2) Code per warranty vendor code policy.		
3) Labor Time Units (TUs) are subject to change with ELSA updates.		
4) Documentation required per Warranty Policies and Procedures Manual.		

Required Parts and Tools

Tool Description	Tool No:
Midtronics Battery Tester/Charger	InCharge 940 (INC 940)
StarMOBILE Tester Kit	CH9401 (Software level 10.04.15 or higher)

Additional Information

All part and service references provided in this Technical Bulletin are subject to change and/or removal. Always check with your Parts Dept. and Repair Manuals for the latest information.