



Service Bulletin

File in Section: -

Bulletin No.: PI0983

Date: June, 2013

PRELIMINARY INFORMATION

Subject: Information on Accessory Bed Liner Installation for Vehicles Equipped With Upper Tie-Downs

Models: 2014 Chevrolet Silverado Light Duty
2014 GMC Sierra Light Duty

Attention: This PI only applies to vehicles with bed liner part numbers 23123699, 22879299, 23123698 and 22879300.

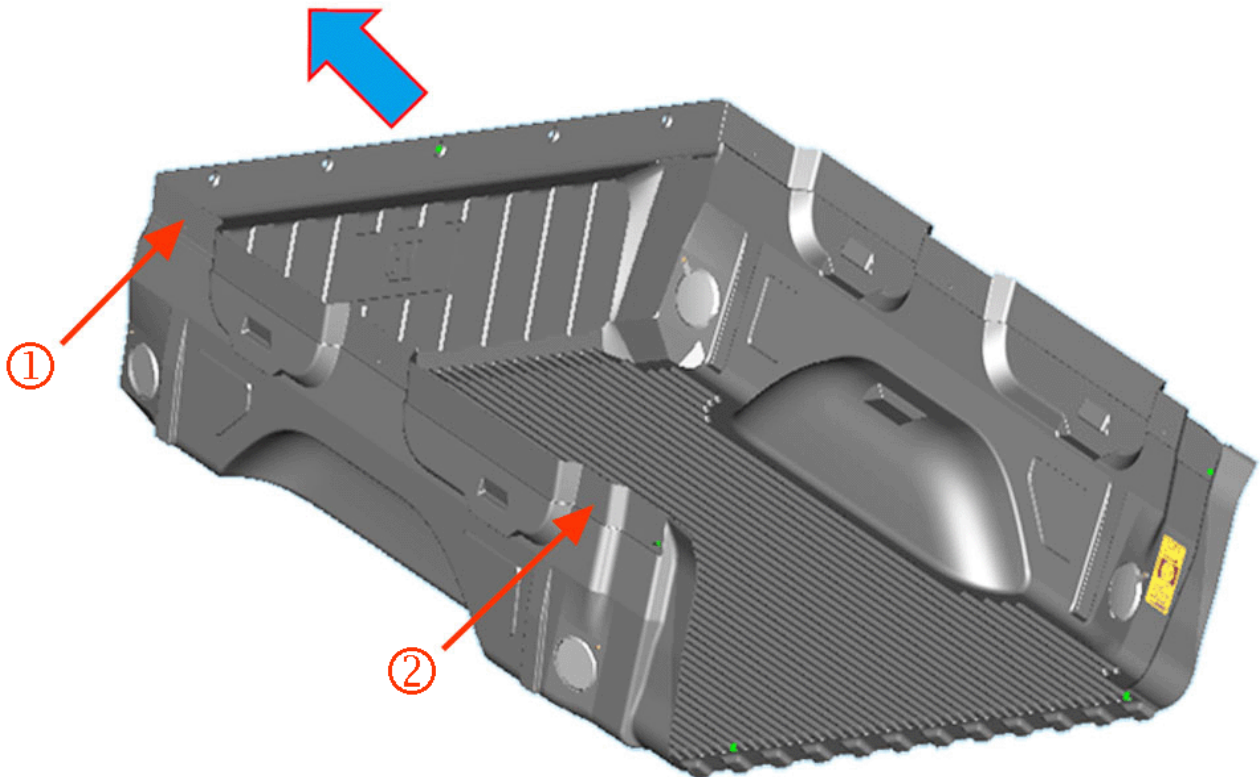
Condition/Concern

During installation of the bed liner, technicians/installer may find that some vehicles may have upper tie-downs installed in the (front and rear) side locations of the pickup bed. However there are no access holes in the liner that match these tie-down locations.

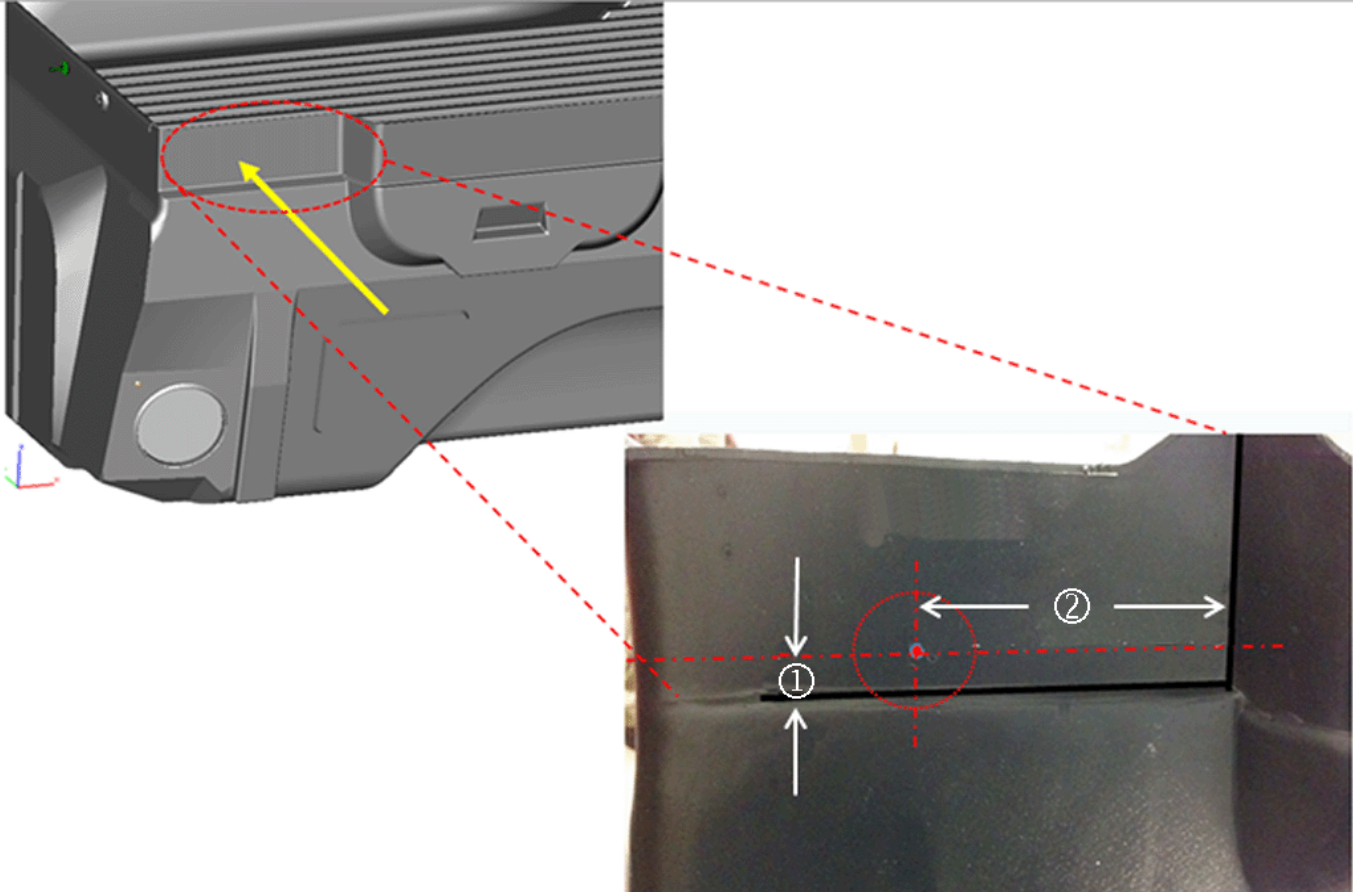
Recommendation/Instructions

Locate and drill four 5 cm (2.0 in) holes in the accessory bed liner to accommodate the upper tie-down locations. The following graphics contain dimensions for locating the center of these hole positions. Holes should be marked and drilled from the outside of the bed liner.

Left Side: Front (1) and Rear (2) Locations

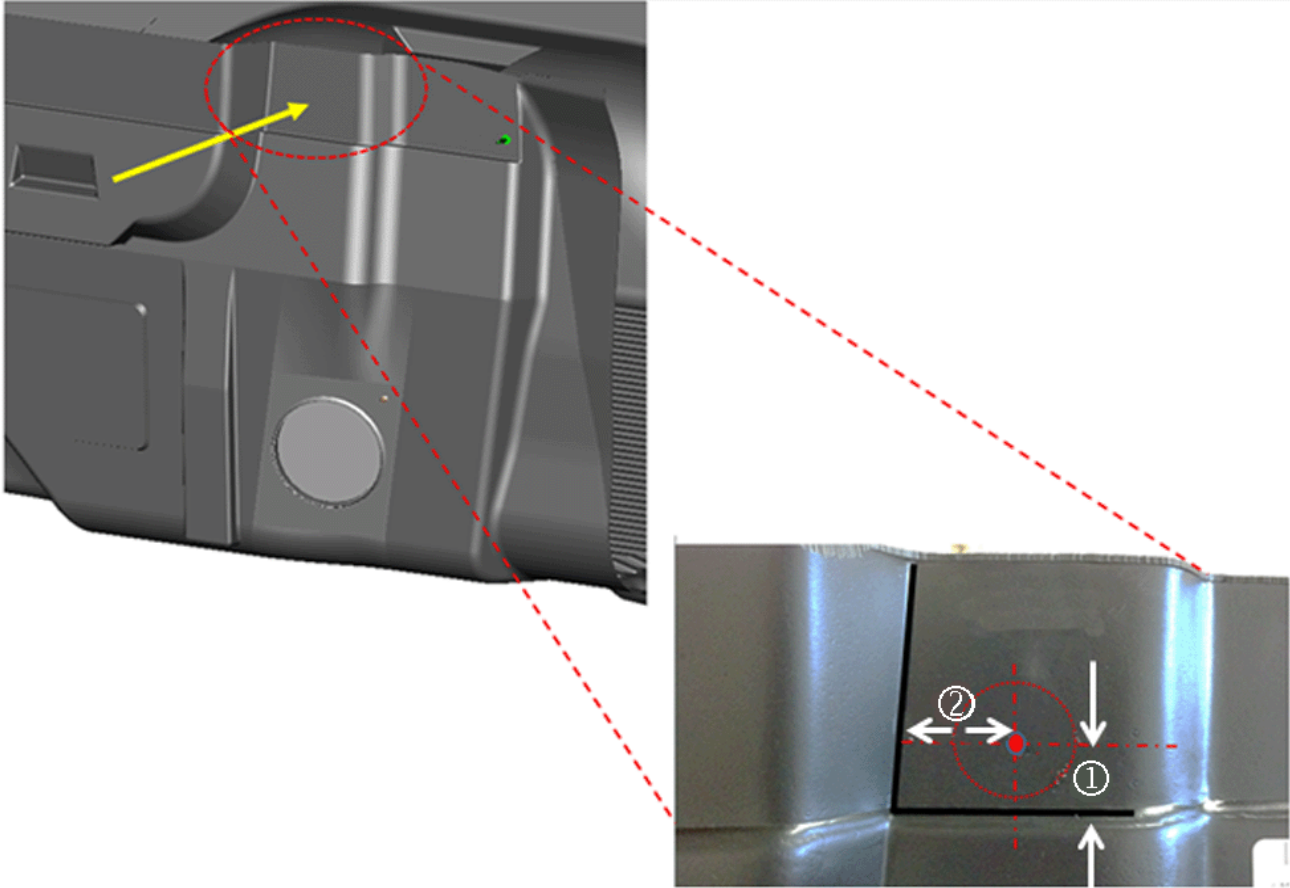


Left Front Location Dimensions



- (1) = 11 mm (0.43 in)
- (2) = 120 mm (4.75 in)

Left Rear Location Dimensions



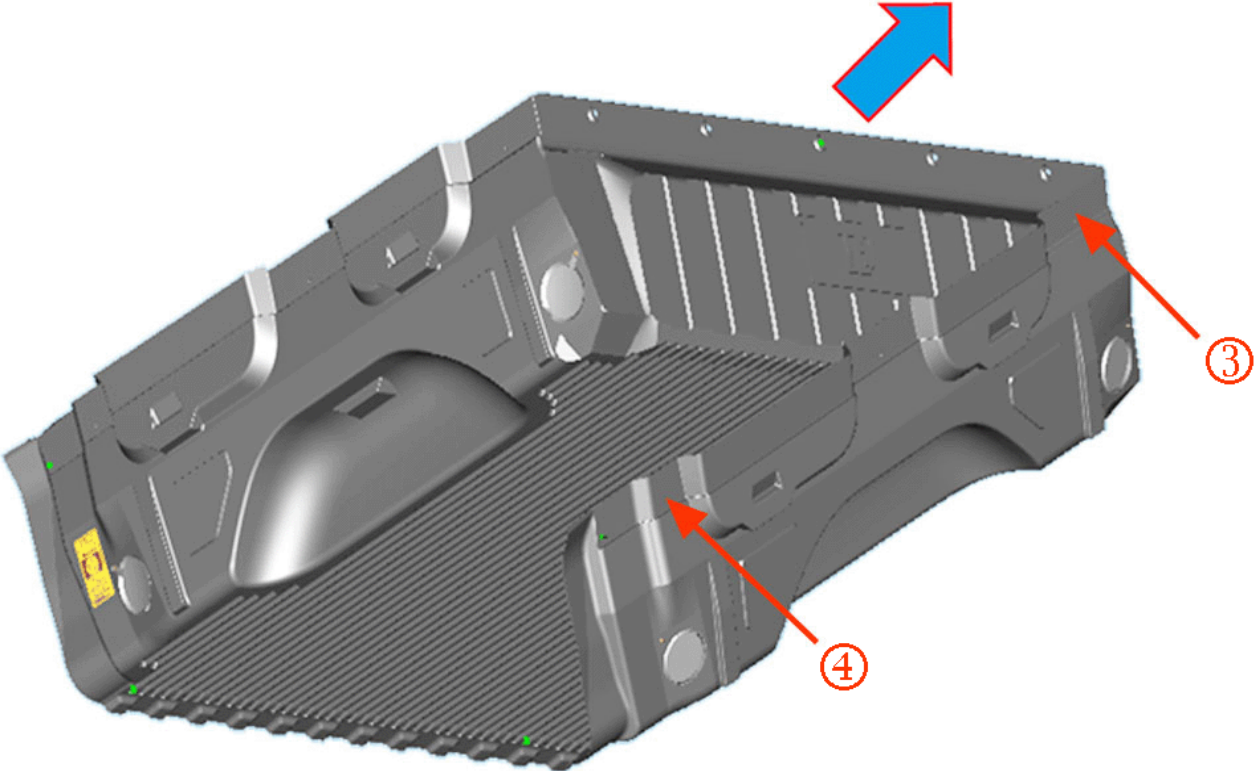
3468346

Important: To better control the accuracy of the rear locations, it is critical to mark the location of the horizontal line first. Measure the distance upward (1) in several areas, and using a marker or tape, position a line at that level. Then, along that line, mark the intersecting point for the second measurement (2).

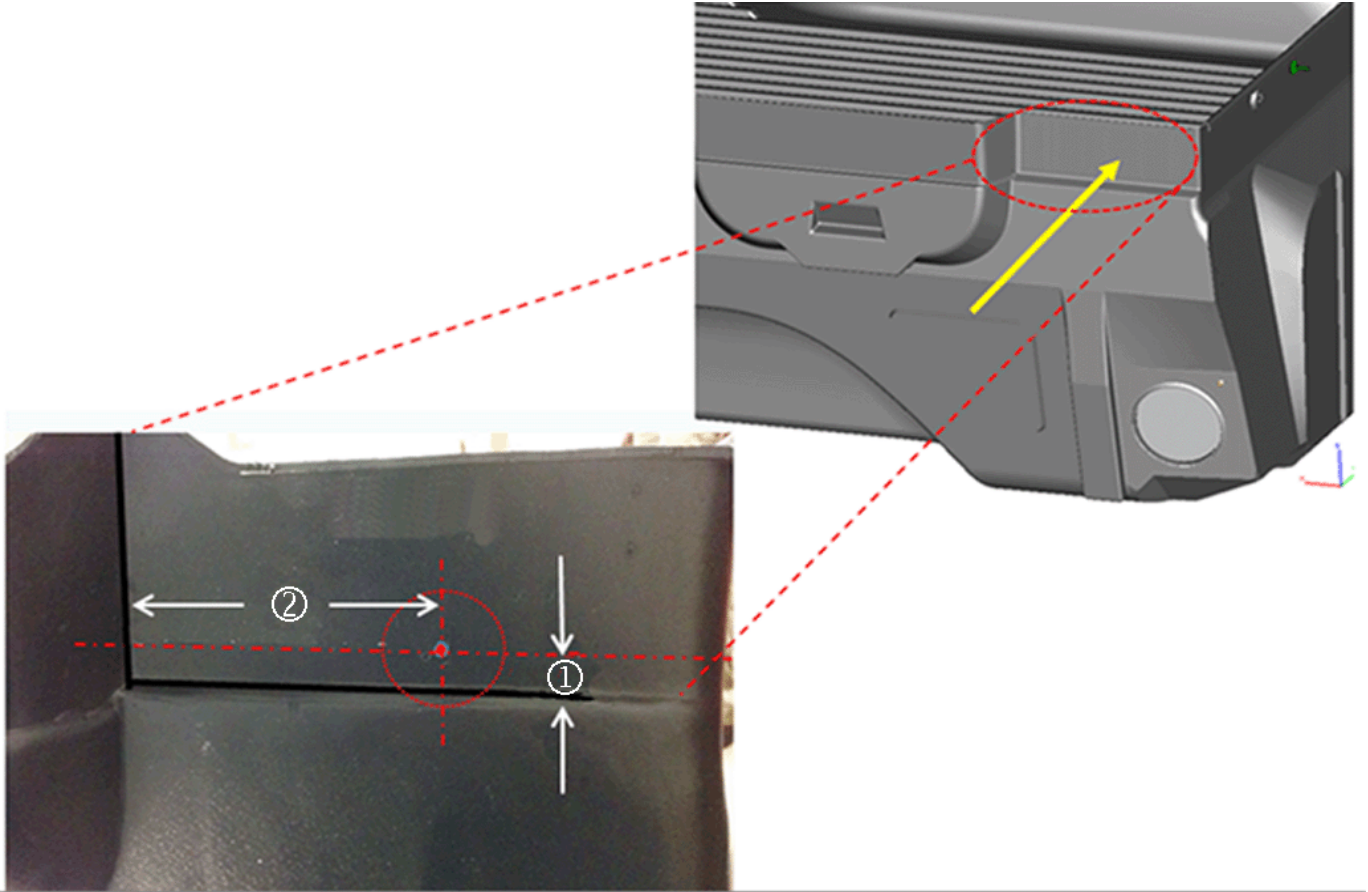
(1) = 21 mm (0.825 in)

(2) = 38 mm (1.5 in)

Right Side: Front (3) and Rear (4) Locations

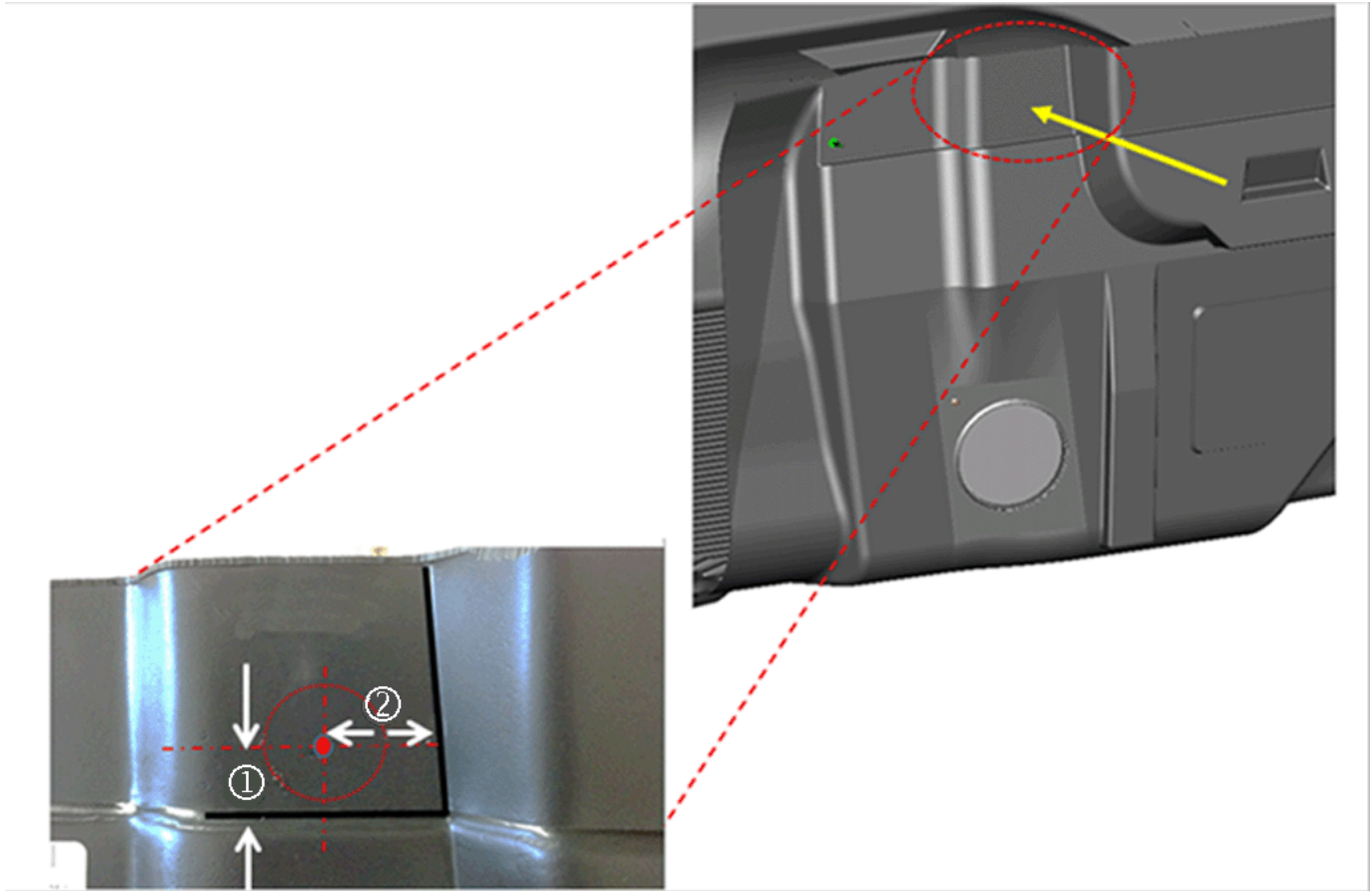


Right Front Location Dimensions



- (1) = 11 mm (0.43 in)
- (2) = 120 mm (4.75 in)

Right Rear Location Dimensions



3468348

Important: To better control the accuracy of the rear locations, it is critical to mark the location of the horizontal line first. Measure the distance upward (1) in several areas, and using a marker or tape, position a line at that level. Then, along that line, mark the intersecting point for the second measurement (2).

(1) = 21 mm (0.825 in)

(2) = 38 mm (1.5 in)

Warranty Information

For vehicles repaired under warranty, use:

| Labor Operation | Description | Labor Time |
|-----------------|--|------------|
| 0580008* | Add Upper Tie Down Access Holes to Bed Liner | 0.5 hr |

*This is a unique labor operation for bulletin use only. It will not be published in the Labor Time Guide.