



Service Bulletin

File in Section: -

Bulletin No.: 15-NA-084

Date: December, 2015

TECHNICAL

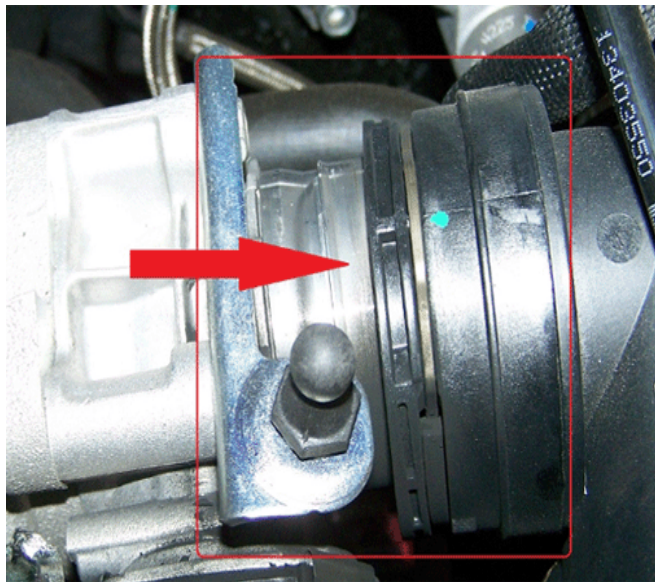
Subject: Diagnostic Tips for Engine Running Rough, Poor Acceleration, Smell of Exhaust Inside Cabin, Possible P0101, P0299, P2002, P2263 or P2463 DTCs Set

Brand:	Model:	Model Year:		VIN:		Engine:	Transmission:
		from	to	from	to		
Chevrolet	Cruze	2014	2015			2.0L Diesel Engine (RPO LUZ)	All

Condition	<p>Some customers may comment on one or more of the following conditions:</p> <ul style="list-style-type: none"> • Engine runs rough. • Poor acceleration. • Smell of exhaust within vehicle. <p>During diagnosis, a technician may find one or more of the following DTCs set:</p> <ul style="list-style-type: none"> • P0101 — Mass Air Flow Sensor Performance • P0299 — Turbocharger Engine Underboost • P2002 — Diesel Particulate Filter (DPF) Low Efficiency • P2263 — Turbocharger Boost System Performance • P2463 — Diesel Particulate Filter (DPF) Soot Accumulation
------------------	---

Diagnostic Tips

If a vehicle exhibits one or more of the above conditions, please review the following information:

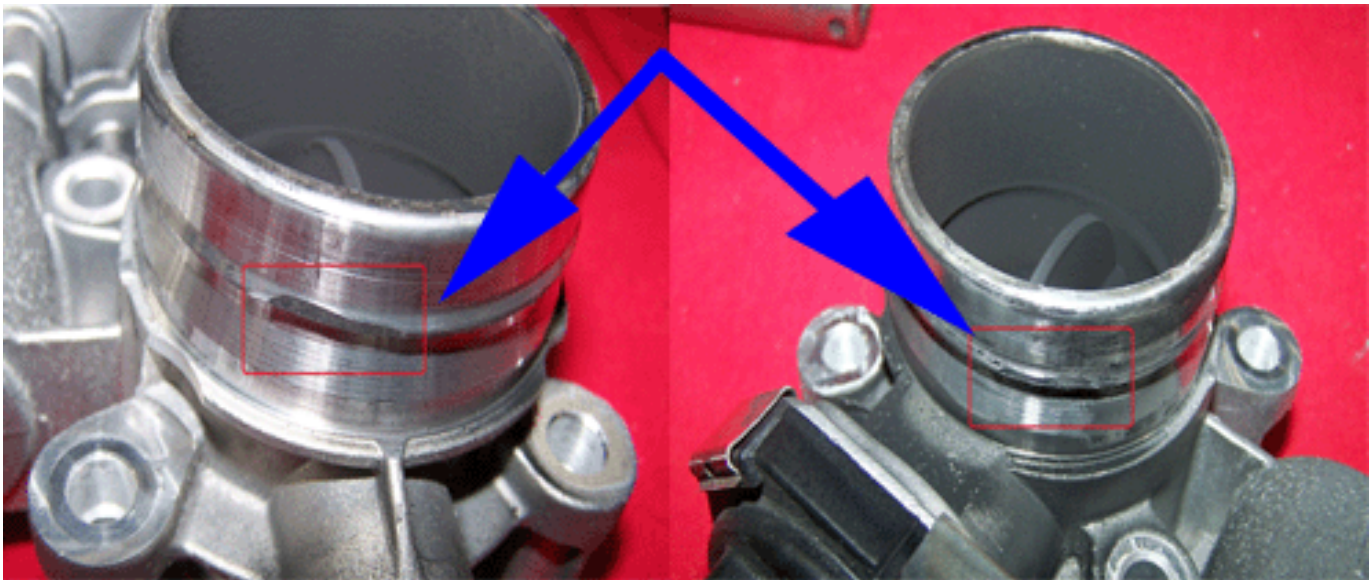


4335262

If the charge air cooler duct has become disengaged, complete the following:

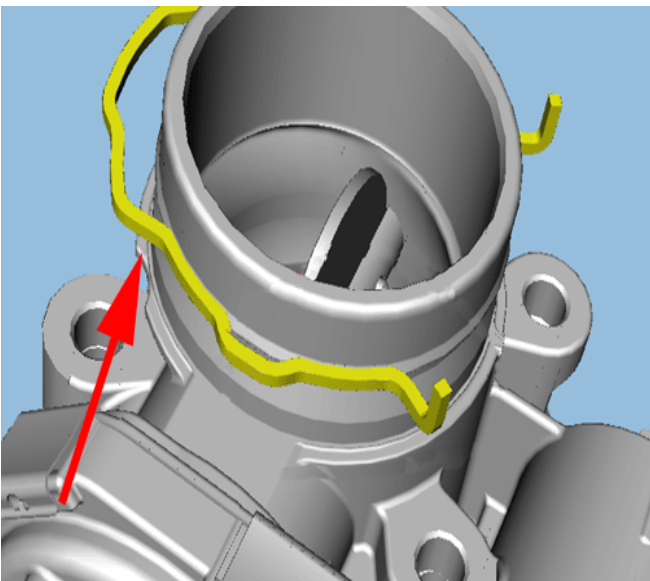
- Replace the charge air cooler duct with a new one. Refer to the proper replacement procedure in SI.

Visually inspect to see if the charge air cooler (CAC) duct has become disconnected from the throttle body.



4335267

- Visually inspect for throttle body damage.



4335264

Note: If the throttle body attachment barb to charge air cooler duct connection spring clip is damaged, also replace the throttle body.

- Check for code P2463. If this code is set, do a service regeneration.
- Check for code P2002. If this code is set, the diesel particulate filter cannot be cleaned using service regeneration and should be replaced.

Version	1
Modified	

