

**HYUNDAI**NEW THINKING.
NEW POSSIBILITIES.**Technical Service Bulletin**

GROUP

CAMPAIGN

NUMBER

16-01-007

DATE

FEBRUARY 2016

MODEL(S)

SONATA (YF)**SUBJECT:** SONATA (YF) BRAKE PEDAL STOPPER REPLACEMENT
(RECALL CAMPAIGN 136)***THIS TSB SUPERSEDES 15-01-056 TO INCLUDE A STEP TO SET THE STOP LAMP SWITCH GAP ACCORDING TO SPECIFICATION.*****★ IMPORTANT******* Retail Vehicles *****

Dealers should perform all open recalls on all vehicles prior to placing them into customer use and whenever an affected vehicle is in the shop for any maintenance or repair.

When a vehicle arrives at the service department, access Hyundai Motor America's "Warranty Vehicle Information" screen via WEBDCS to identify open Campaigns.

Description: The brake pedal stopper pad is located between the stop lamp switch and the brake pedal arm. The brake pedal stopper pad material in the affected vehicles can deteriorate allowing the stop lamp switch plunger to remain extended when the brake pedal is released. A deteriorated pad can result in the stop lamps illuminating continuously, illumination of the traction control warning lamp, the ability to move the shift lever without depressing the brake pedal, or activation of the engine management system's brake pedal override feature.

Any of the described symptoms can increase the risk of a crash.

**Applicable Vehicles:** 2011-2012MY Sonata (YF) vehicles produced from 12/7/2009 thru 06/30/2011**Parts Information:**

Part Name	Part Number	Qty.
Stopper-Pedal	32876-3Q100-QQH	1

Circulate To: General Manager, Service Manager, Parts Manager, Warranty Manager, Service Advisors, Technicians, Body Shop Manager, Fleet Repair

Warranty Information:

Model	Op. Code	Operation	Op. Time
Sonata (YF)	51CA05R0*	Stopper-Pedal Replacement – Standalone repair	0.3
	51CA05R1**	Stopper-Pedal Replacement – Performed along with Recall 132 Sonata GDI Engine Inspection / Replacement	0.1

NOTE #1: Submit Claim on Campaign Claim Entry Screen

NOTE #2: Claim Submission is subject to audit and potential chargeback for resubmission with correct labor operation.

* Use 51CA05R0 if only Recall 136 is being performed during this visit.

** Use 51CA05R1 if Recall 136 and Recall 132 are being performed during this visit.

Service Procedure:

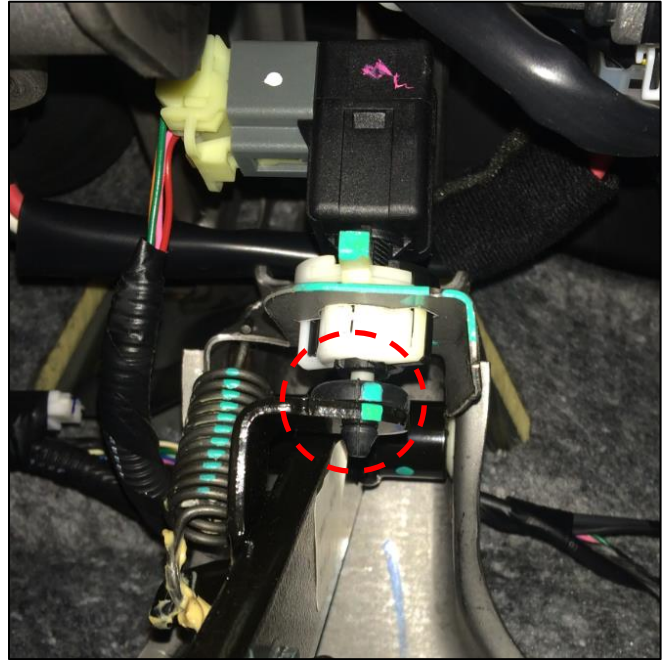
1. Apply the parking brake and start the engine.



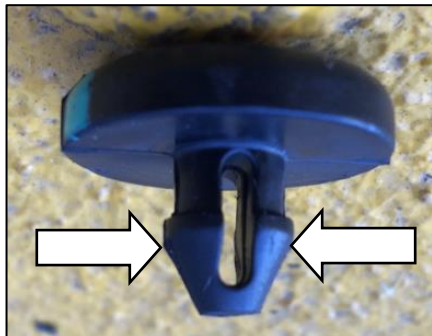
2. Press the brake pedal to access the stopper.



3. The stopper is mounted on the brake pedal, in-line with the stop lamp switch.



4. Remove the stopper by squeezing the engagement nub by hand, or by using pliers, and pressing the stopper out towards the stop lamp switch plunger.



Squeeze the sides of the stopper to remove it.



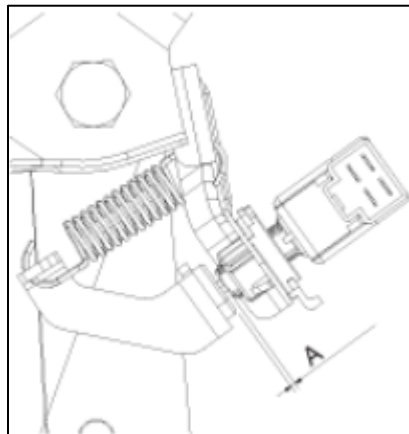
5. Destroy the removed stopper by cutting the nub off. Discard the pieces.



6. Install a new stopper by pressing it into place.

7. Set the gap (A) between the stop lamp switch and stopper pad to specification, per shop manual procedures:

Stop Lamp Clearance Specification: 1.0 ~ 2.0 mm (0.04 ~ 0.08 in.)



8. After replacing the stopper, check for proper function of the brake lamps. When applying the brake pedal, the brake lamps should illuminate. After releasing the pedal, the brake lamps should extinguish.



9. ESC MIL may be illuminated during this procedure for DTC C1513 Brake Switch Error. This is because with the stopper removed, the brake switch is ON but there is no brake pressure. This DTC is set under those conditions if the switch is on for over 60 seconds.

If the MIL lamp is ON, cycle the ignition to distinguish the lamp. If lamp is not distinguished, check the DTC using GDS, and clear if the code is C1513.

If there is a DTC other than C1513, perform the appropriate diagnostic service and claim under warranty.

