



# SERVICE BULLETIN

Classification: BT15-022	Reference: NTB16-026	Date: March 14, 2016
-----------------------------	-------------------------	-------------------------

## 2014-2015 TAXI; SLIDE WINDOW HANDLE

APPLIED VEHICLE: 2014-2015 Taxi

### SERVICE INFORMATION

The “slide window handle” located on the left and right rear sliding doors is now available individually as a service part.

If the slide window handle needs to be replaced:

1. Using a suitable tool remove the slide window handle finishers (Figure 1).

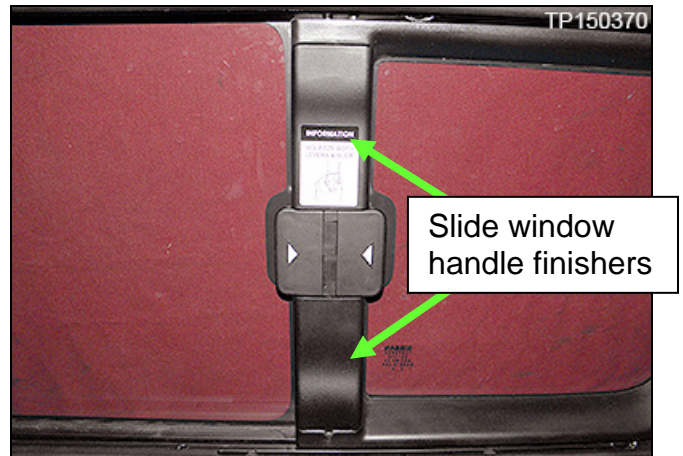


Figure 1

2. Push the slide window “latch pin” (hinge pin) down to disengage it from the upper pin boss (Figure 2).

- Slide the hinge pin only enough to clear the upper pin boss.

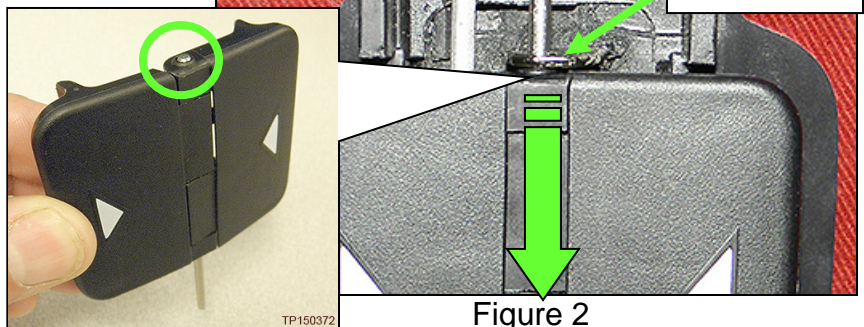


Figure 2

Nissan Bulletins are intended for use by qualified technicians, not 'do-it-yourselfers'. Qualified technicians are properly trained individuals who have the equipment, tools, safety instruction, and know-how to do a job properly and safely. NOTE: If you believe that a described condition may apply to a particular vehicle, DO NOT assume that it does. See your Nissan dealer to determine if this applies to your vehicle.

3. Gently tilt the slide window handle and hinge pin away from the pin boss (Figure 3).

**IMPORTANT:** Only tilt the slide window handle enough to clear the hinge pin from the upper pin boss.

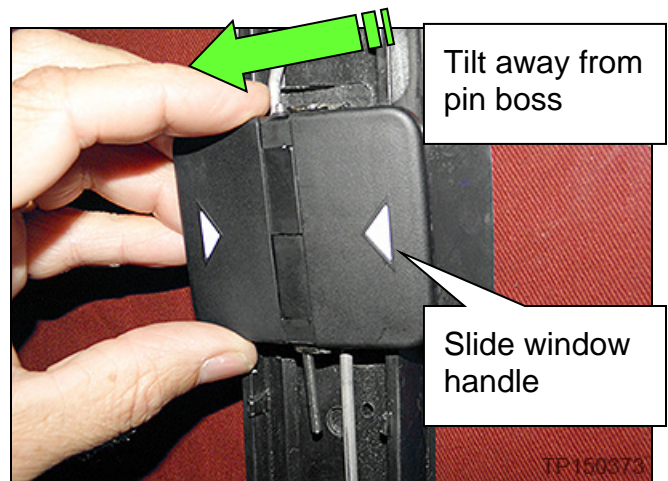


Figure 3

4. While the slide window handle is tilted away from the slide window assembly, slide the hinge pin all the way up (Figure 4).

**NOTE:** Do not remove the pin from the slide window handle.

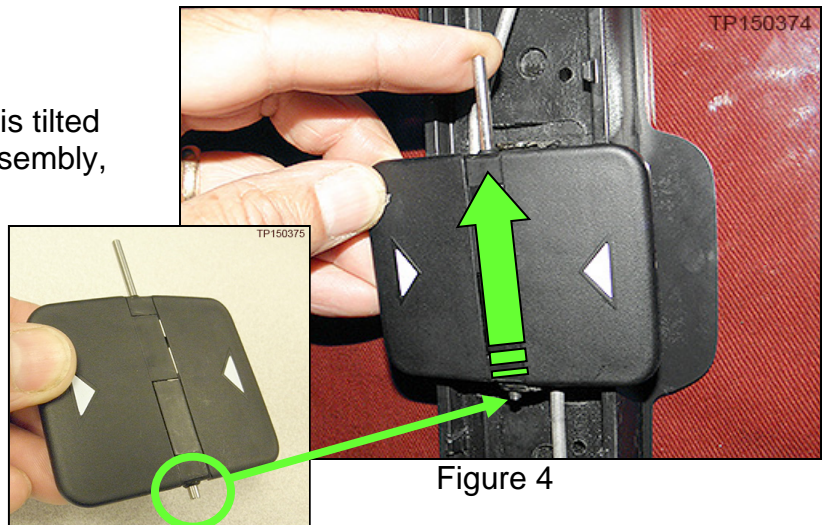


Figure 4

5. Remove slide window handle from the lower pin boss and window latch assembly.

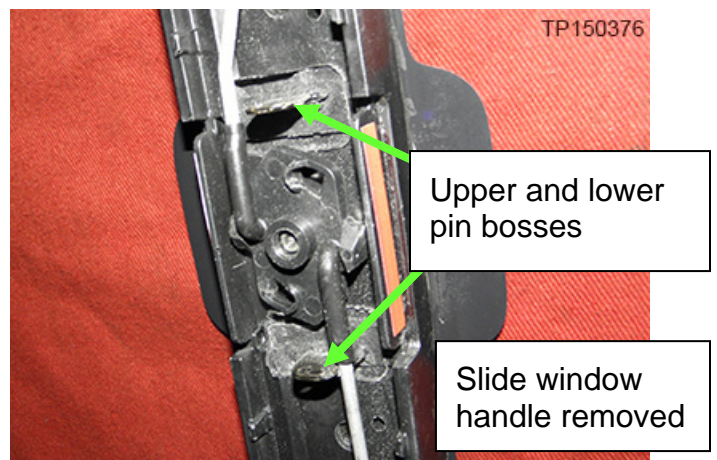


Figure 5

6. Install the slide window handle in the reverse order of removal.

**PARTS INFORMATION**

DESCRIPTION	PART #	QUANTITY
KNOB ASSY-SLIDE DOOR WDW (Slide Window Handle)	82345-3LN0A	One per side (as needed)

**CLAIMS INFORMATION**

Submit a Primary Failed Part (PP) line claim using the following claims coding:

DESCRIPTION	PFP	OP CODE	SYM	DIA	FRT
Replace One Slide Window Handle	82345-3LN0A	BX5DAA	ZE	32	0.2
Replace Both Slide Window Handles		BX5EAA			