

<b>Technical Service Bulletin Number</b>
--

TSB130127
-----------



## Technical Service Bulletin

### Subject

---

B Gas Plus CM556, B Gas International CM556, C Gas Plus CM556: Unstable Idle, Idle Surge, Stalls

### Issue

---

Symptoms occur after Fuel Control Valve, Part Number 3933841, is replaced with Fuel Control Valve, Part Number 4997684. A calibration update is required.

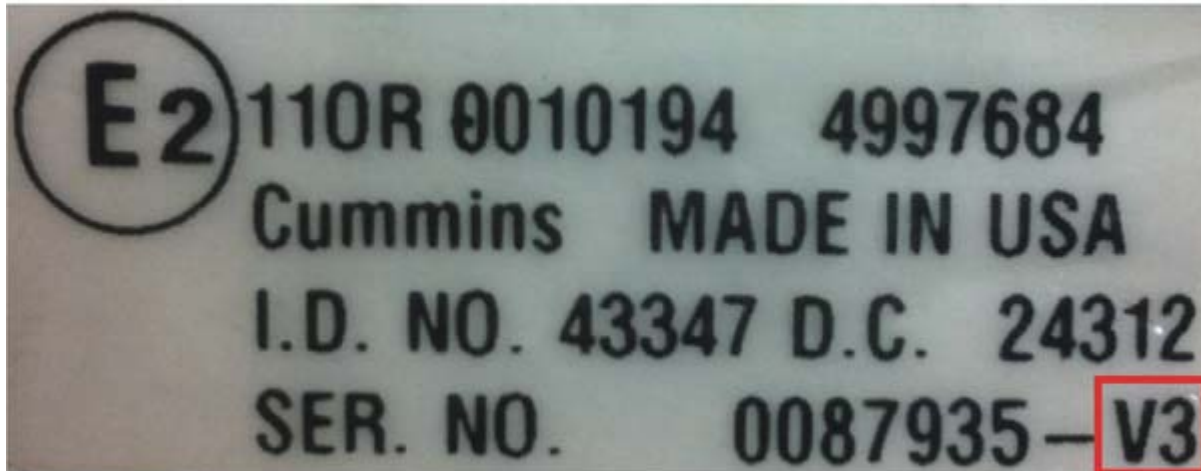
The Version 3 (V3) fuel control valve (FCV), Part Number 4997684, is **not** compatible with older calibration versions. When an older FCV is replaced with a V3 FCV, idle instability, surge, and stalling at idle can result.

### Verification

---

Any B Gas Plus CM556, B Gas International CM556, or C Gas Plus CM556 engine with a V3 FCV, Part Number 4997684, is affected. V3 Fuel Control Valves may be identified by the “-V3” designation next to the serial number, as shown below.

©Cummins Inc



05d01168

## Resolution

When replacing obsoleted FCV, Part Number 3933841, with the present FCV, Part Number 4997684, the engine calibration **must** be updated at the same time. Reference the table below to determine which calibration is appropriate, based on the ECM Code presently in the engine.

B Gas Plus CM556 and B Gas International CM556 Engines		
Previous ECM Code	New ECM Code for Manual Transmissions	New ECM Code for Automatic Transmissions
R90017	R90181	R90180
R90019	R90098	R90125
R90020	R90110	R90136
R90021	R90097	R90124
R90022	R90109	R90135
R90028	R90100	R90127
R90029	R90101	R90128
R90036	R90144	R90144

R90037	R90143	R90143
R90038	R90142	R90142
R90042	R90099	R90126
R90043	R90096	R90123
R90044	R90108	R90134
R90056	R90104	R90130
R90057	R90103	R90129
R90058	R90102	R90111
R90059		R90120
R90060		R90121
R90061		R90122
R90066	R90106	R90132
R90067	R90105	R90131
R90070	R90107	R90133
R90081	R90116	R90118
R90084	R90117	R90119
R90087	R90112	R90114
R90088	R90113	R90115

<b>C Gas Plus CM556 Engines</b>	
<b>Previous ECM Code</b>	<b>New ECM Code</b>
R90001	R90152
R90002	R90148
R90003	R90156
R90004	R90151
R90005	R90147
R90006	R90155
R90007	R90150
R90008	R90146
R90009	R90154
R90010	R90158
R90011	R90157

R90012	R90153
R90023	R90168
R90024	R90166
R90025	R90159
R90026	R90167
R90030	R90174
R90031	R90176
R90032	R90175
R90033	R90160
R90045	R90173
R90046	R90145
R90047	R90165
R90048	R90149
R90052	R90164
R90053	R90163
R90054	R90162
R90055	R90161
R90062	R90172
R90063	R90171
R90064	R90170
R90065	R90169
R90077	R90141
R90079	R90139
R90080	R90140
R90078	R90177
R90082	R90179
R90083	R90178
R90085	R90138
R90093	R90139
R90094	R90140
R90095	R90141

## Warranty Statement

---

The information in this document authorizes specific changes to the repair practice for failures covered under product warranty coverages.

## Document History

---

Date	Details
2013-8-19	Module Created
2013-12-6	Updates TSB to include additional engine family (C Gas Plus)
2014-2-2	none
2016-2-18	Updated B Gas Plus CM556 and B Gas International CM556 Engines table with new ECM Code and ECM Code for Automatic Transmissions.

---

**Last Modified: 19-Feb-2016**

---

Copyright © 2000-2010 Cummins Inc. All rights reserved.