

<b>Technical Service Bulletin Number</b>
--

TSB150180
-----------



## Technical Service Bulletin

### Subject

---

New Low Pressure Regulator Fuel Control Cover

### Warranty Statement

---

The information in this document has no effect on present warranty coverage or repair practices, nor does it authorize TRP or Campaign actions.

### Contents

---

#### Product Affected

- ISL G CM2180
- ISX12 G CM2180 EJ

#### Issue

The low pressure regulator can collect condensation from the charge air cooler through the boost reference line. If the level of water reaches the reference port in the low pressure regulator, the low pressure regulator can freeze after the engine is shut down in ambient conditions below 0°C [ 32°F ].

Typical symptoms associated with this problem are:

- Check engine light
- STOP ENGINE light
- Rough running
- Fault Codes 2722, 2723, and/or 2991 for engine regulator outlet fuel pressure after start up when ambient conditions are below 0°C [ 32°F ].

## Verification

Perform the following to verify if the low pressure regulator fuel control cover has malfunctioned:

1. Connect INSITE™ electronic service tool.
2. Check for fuel pressure Fault Codes 2722, 2723 and/or 2991.
3. If active or inactive fuel pressure fault codes are present, verify with the operator that the check engine light and/or rough running symptoms occurred at initial startup when ambient conditions were below 0°C [ 32°F ].
4. If the symptoms and fault codes occurred when ambient conditions were below 0°C [ 32°F ], remove the low pressure regulator fuel control cover.
  - o See ISL G CM2180 Service Manual, Bulletin 4021649. Refer to Procedure 005-047 in Section 5.
  - o See ISX12 G CM2180 EJ Service Manual, Bulletin 4310682. Refer to Procedure 005-047 in Section 5.
5. Check for moisture or signs of moisture in the low pressure regulator fuel control cover. See Figure 1 below.

©Cummins Inc

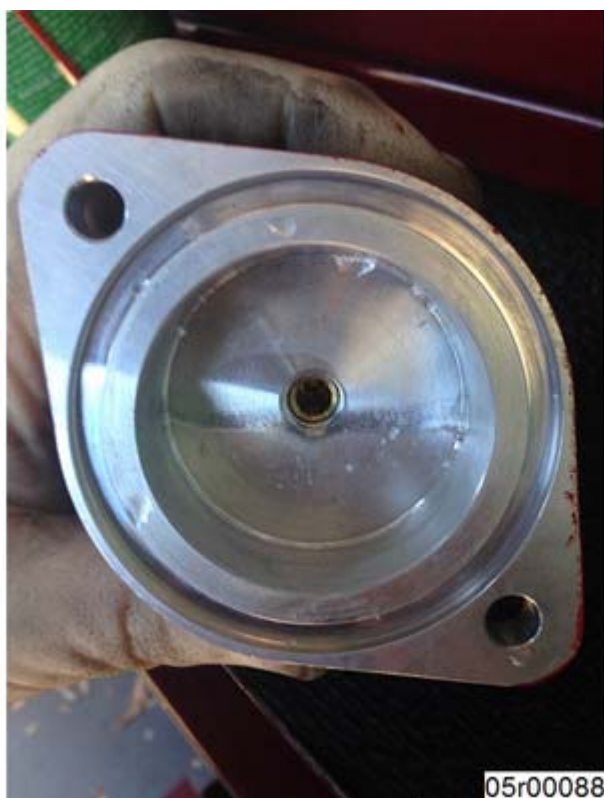


Figure 1, Low Pressure Regulator Fuel Control Cover Malfunction Identified by Signs of Moisture

## Resolution

The low pressure regulator fuel control cover is to be replaced **only** if all three of the following conditions exist:

- Fault Codes 2722, 2723, or 2991 are active
- Ambient temperature at the time of the symptoms was below 0°C [ 32°F ]
- Moisture is found in the low pressure regulator fuel control cover

If all conditions have been met, replace the low pressure regulator fuel control cover with new part number 5347803.

- See ISL G CM2180 Service Manual, Bulletin 4021649. Refer to Procedure 005-047 in Section 5.
- See ISX12 G CM2180 EJ Service Manual, Bulletin 4310682. Refer to Procedure 005-047 in Section 5.

### Service Instructions

The low pressure regulator fuel control cover **must** be installed with the boost reference line fitting at the bottom. See Figure 2 and 3 below.



Figure 2, New Low Pressure Regulator Fuel Control Cover, Installed on ISL G CM2180 EJ Low Pressure Housing

©Cummins Inc

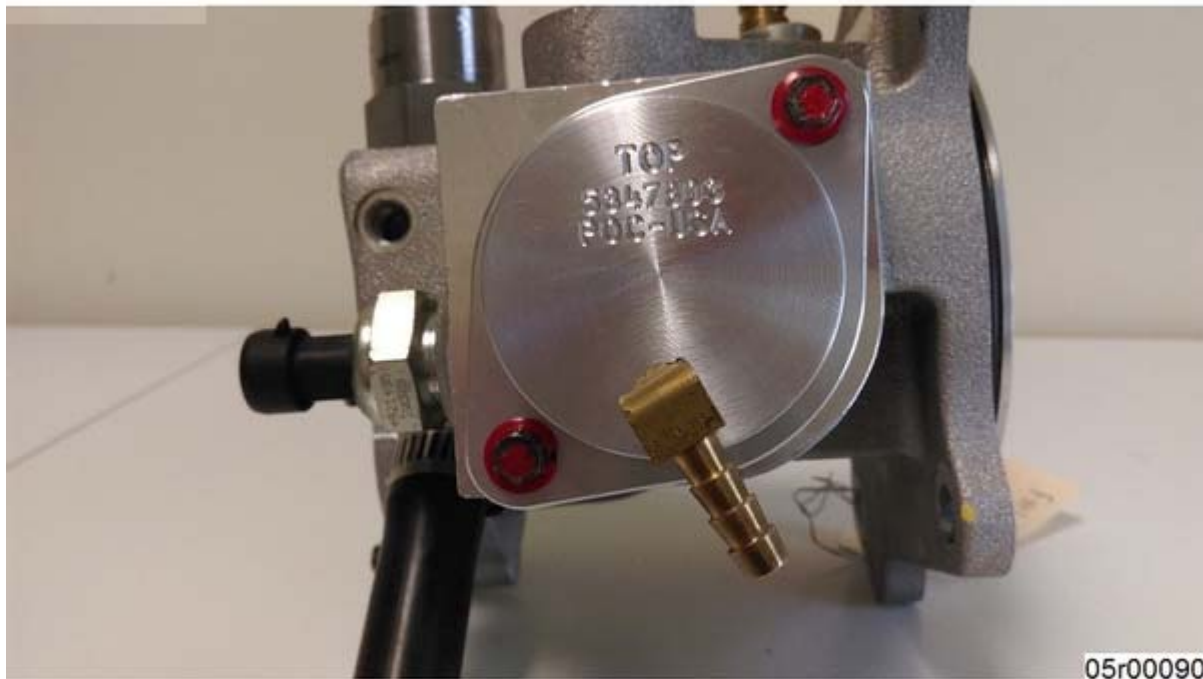


Figure 3, New Low Pressure Regulator Fuel Control Cover Installed on ISX12 G CM2180 EJ Low Pressure Housing

### Service Parts Availability

Low pressure regulator fuel control cover, Part number 5347803, has been released to prevent moisture from entering the boost reference side of the low pressure regulator. The boost reference line fitting has been relocated to the bottom of the new low pressure regulator fuel control cover, which will prevent water pooling inside as shown in Figure 1 above.

Table 1, Service Parts				
Part Description	Existing Part Number	Obsoleted	Superseded	New Part Number
Low Pressure Regulator Fuel Control Cap	3970602	Yes	Yes	5347803

### Document History

Date	Details
2015-11-9	Module Created

**Last Modified: 25-Feb-2016**

Copyright © 2000-2010 Cummins Inc. All rights reserved.