

ATTENTION:
 GENERAL MANAGER
 PARTS MANAGER
 CLAIMS PERSONNEL
 SERVICE MANAGER

IMPORTANT - All Service Personnel Should Read and Initial in the boxes provided, right.

© 2014 Subaru of America, Inc. All rights reserved.



QUALITY DRIVEN® SERVICE

SERVICE INFORMATION

APPLICABILITY: 2015MY WRX and STI Models **NUMBER:** 09-57-14
SUBJECT: Fuel (Gasoline) Filler Door (Flap) Does Not Open **DATE:** 06/11/14

INTRODUCTION

This bulletin provides new part number information along with a service procedure to address a customer concern of the fuel filler door not opening when lifting the interior release lever.

COUNTERMEASURE IN PRODUCTION

The new part was incorporated into production April 23, 2014 starting with VIN F*808794.

PART INFORMATION

PART NAME:	NEW PART NUMBER
SAUCER RPR SET	51469VA000

NOTE: The repair set includes a revised spring and a new ring clip. The ring clip is a **one-time use part**.

SERVICE PROCEDURE / INFORMATION

- Apply protective tape to the edge of the fuel filler door and the vehicle body to protect the finish as shown in the photo below.



Continued...

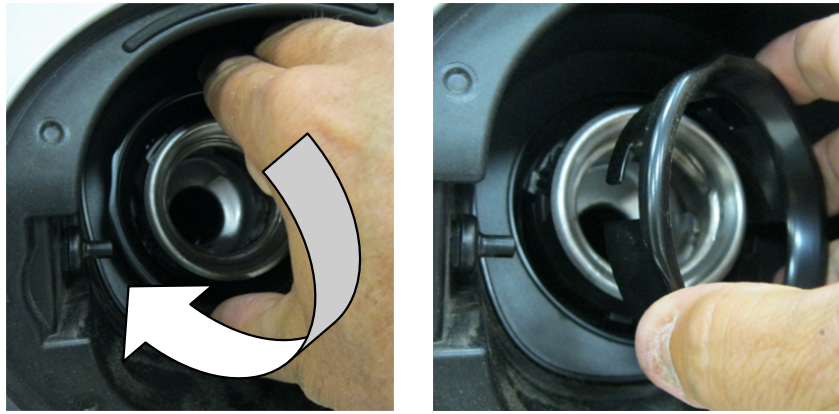
CAUTION: VEHICLE SERVICING PERFORMED BY UNTRAINED PERSONS COULD RESULT IN SERIOUS INJURY TO THOSE PERSONS OR TO OTHERS.

Subaru Service Bulletins are intended for use by professional technicians ONLY. They are written to inform those technicians of conditions that may occur in some vehicles, or to provide information that could assist in the proper servicing of the vehicle. Properly trained technicians have the equipment, tools, safety instructions, and know-how to do the job correctly and safely. If a condition is described, DO NOT assume that this Service Bulletin applies to your vehicle, or that your vehicle will have that condition.

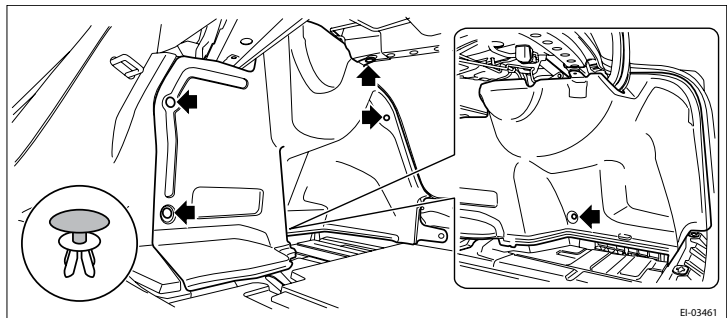
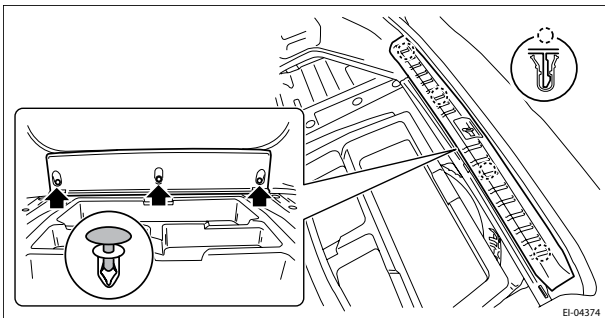
SUBARU OF AMERICA, INC. IS ISO 14001 COMPLIANT

ISO 14001 is the international standard for excellence in Environmental Management Systems. Please recycle or dispose of automotive products in a manner that is friendly to our environment and in accordance with all local, state and federal laws and regulations.

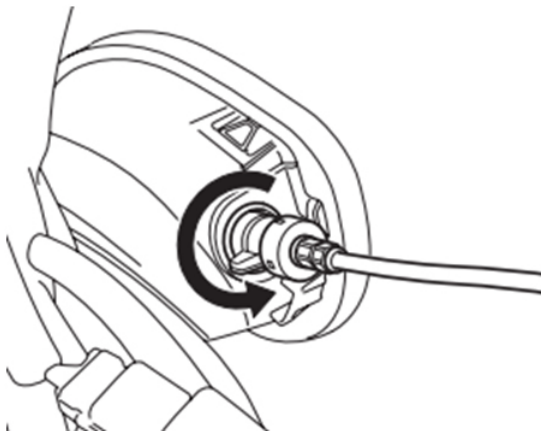
- Remove the fuel filler pipe protector (lock ring) by turning it **CLOCKWISE**.



- CAREFULLY** remove the retaining clips as necessary from the trunk threshold trim and the inner liner as shown in the illustrations below to provide access to the back side of the fuel filler area.

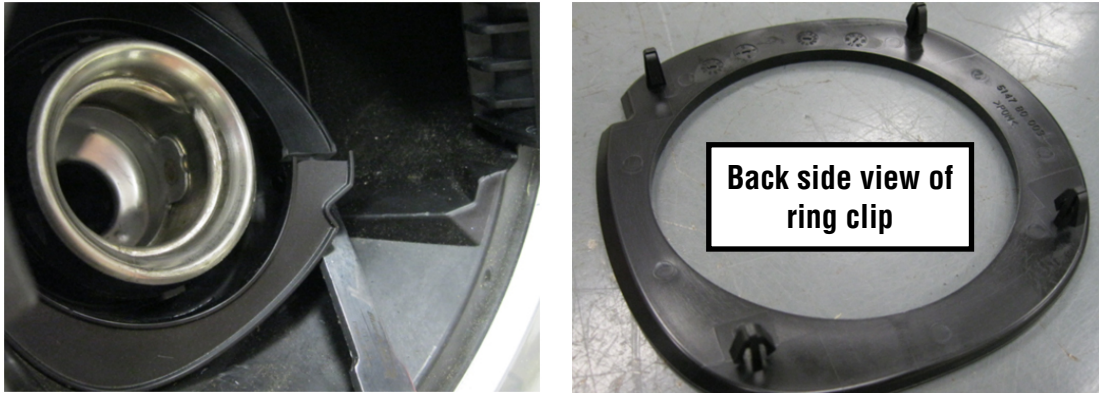


- As shown in the illustration below, rotate the housing of the fuel door release latch **COUNTER-CLOCKWISE** and remove it from the assembly.



Continued...

- Using a trim clip removal tool (or equivalent), pry up and remove the ring clip surrounding the fuel filler neck. There are 4 clips securing the ring clip. This part is a one-time use item as it will be broken during removal as shown in the photo below. **REMINDER:** Always take proper precautions to protect the vehicle's finish.

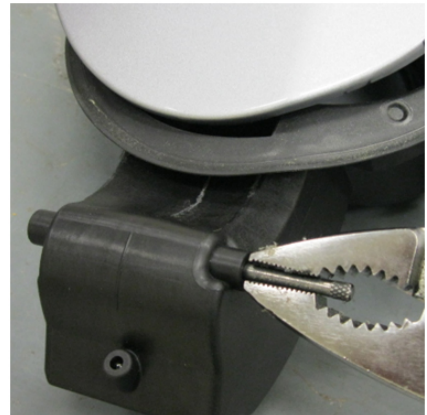
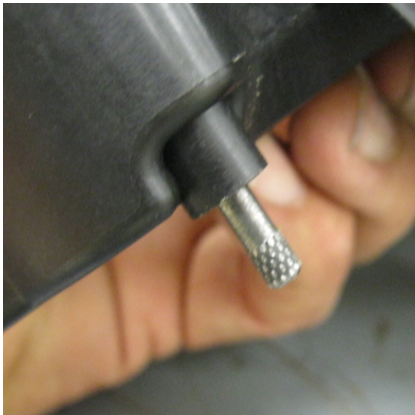


- Once the ring clip is removed, the fuel filler door assembly is ready to remove. Using a finger in the latch hole, pull the rear part of the assembly toward you to dislodge it from the body. Once loose from the body, use another finger or a plastic trim tool to “unhook” the rubber insert portion from the front of the filler neck then remove completely as shown below.



Continued...

- Using a small punch and a hammer, tap the hinge pin out from the bottom. The top of the hinge pin is knurled to keep it in position. A socket is used for support while removing the pin. (The assembly is upside-down in the photo below.) Once the pin is partially removed, use a pair of pliers to remove it completely as shown in the sequence below.



- Remove the Phillips-head tapping screw. With the hinge pin and the screw removed, the fuel filler door can be removed from the housing portion of the assembly.



- The photo below shows the difference between the old and the new spring. The new spring has a slight curvature to it while the old spring is flat.



Continued...

- Start reassembly by installing the new spring onto the fuel filler door as shown below.



- Install the filler door back into the housing assembly then reinstall the hinge pin. The knurled portion goes in last to hold it in position.

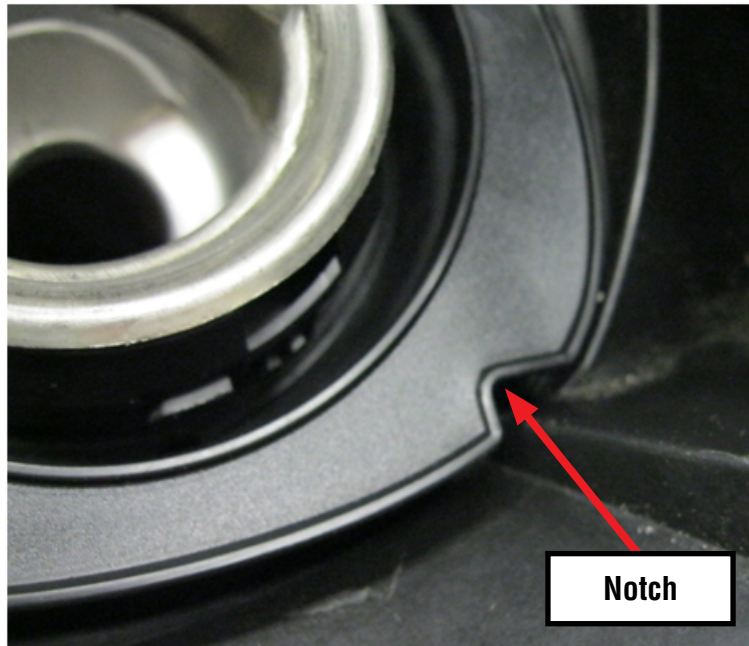


- After the pin is fully seated, use 2 fingers to push the spring all the way back into the housing. You will hear an audible “click” sound when it snaps into proper position.



Continued...

- Once the spring clicks into position, replace the Phillips-head tapping screw. Operate the filler door a few times to confirm it is working properly before reinstalling the assembly back into the vehicle.
- Once the assembly is back in position, secure it in place using the new ring clip. The ring clip can only be installed one way. Make sure the notch is positioned as shown below then make sure all 4 retaining clips lock into position properly.



- The remainder of the reassembly is in the opposite order of disassembly.
- Confirm proper operation of the fuel filler door release to complete the procedure.

WARRANTY / CLAIM INFORMATION

For vehicles within the Basic New Car Limited Warranty period, this repair may be claimed using the following information:

LABOR DESCRIPTION	LABOR OPERATION #	FAIL CODE	LABOR TIME
WRX / STI FUEL FLAP REPAIR PROCEDURE	A915-556	SGP-48	0.5