

Technical Service Bulletin Number
--

TSB150073



Technical Service Bulletin

Subject

Anti-Lock Brake System (ABS) Fault Lamp Illuminating Immediately After Engine Control Module (ECM) Calibration

Issue

When calibrating an Engine Control Module (ECM) on a unit equipped with a Bendix® EC-80™ electronic controller the Anti-Lock Brake System (ABS) fault lamp can be illuminated in error immediately after the new ECM calibration is installed. The ABS fault lamp illumination is caused by an interfacing issue with older versions of the INSITE™ electronic service tool and the Bendix® EC-80™ electronic controller.

The Engine Brake Control parameter by default is set to “enabled” in all standard ECM calibrations. Some Original Equipment Manufacturers (OEMs) may choose to disable this parameter, which highlights this interface issue. The Bendix EC-80™ controller will recognize the Engine Brake Control parameter as “enabled” before the INSITE™ electronic service tool save and restore function sets the Engine Brake Control parameter to “disabled”. As a result of the Bendix® EC-80™ controller not receiving the expected Engine Brake Control message over the datalink, the ABS fault lamp will illuminate.

Verification

ABS fault lamp illuminates immediately after calibrating the ECM on a unit equipped with a Bendix® EC-80™ electronic controller.

Product Affected

- ISB6.7 CM2350 B101
- B6.7 CM2350 B121B
- ISL9 CM2350 L101
- ISX12 CM2350 X102

Resolution

Scenario 1 (Proactive):

- The ECM has not been calibrated.
- Download the latest version of INSITE™ 8.1.0 or later to prevent the ABS fault lamp from being illuminated in error.

Scenario 2:

- The ECM has been calibrated and the ABS fault lamp illuminated immediately after the calibration update.
- Utilize the Bendix® ACom® Diagnostics (ECU Re-Configuration Tool) to clear the ABS fault lamp. See instructions below.

Bendix® ACom® Diagnostics (ECU Re-Configuration Tool) Instructions:

1. Download Bendix® ACom® Diagnostics (ECU Re-Configuration) software as needed:

- Option 1: (For Cummin® Employees **only**) Download using Software Shelf
- Option 2: Download using link in note below

NOTE: <http://www.bendix.com/en/servicessupport/abssoftware/acomdiagnosticsdownload/genericform.jsp>

2. Connect to ACom® and select Controller Configuration. See Figure 1 below.

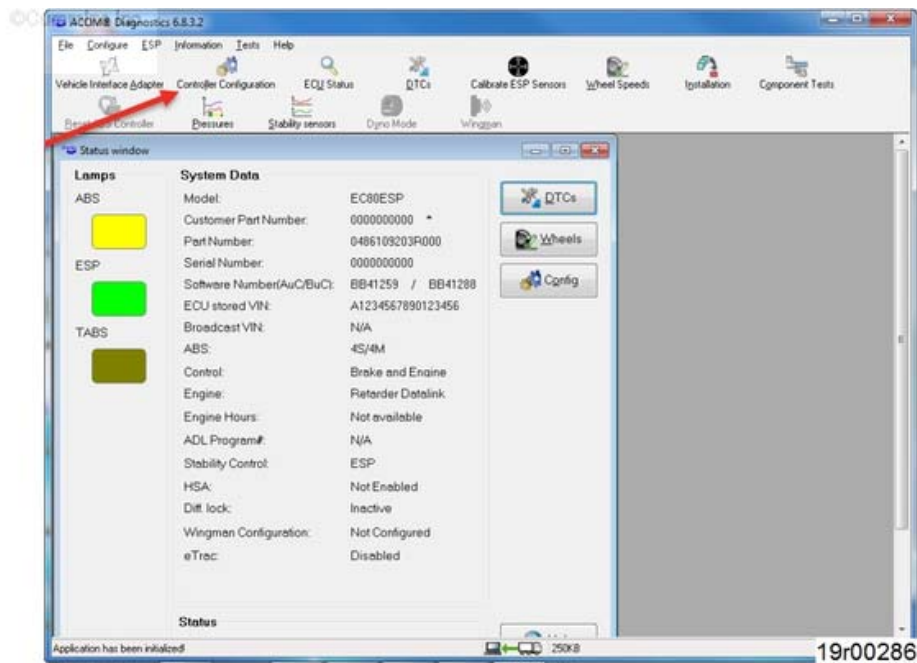


Figure 1, ACom® Controller Configuration

3. In configuration window select Self Config. See Figure 2 below.

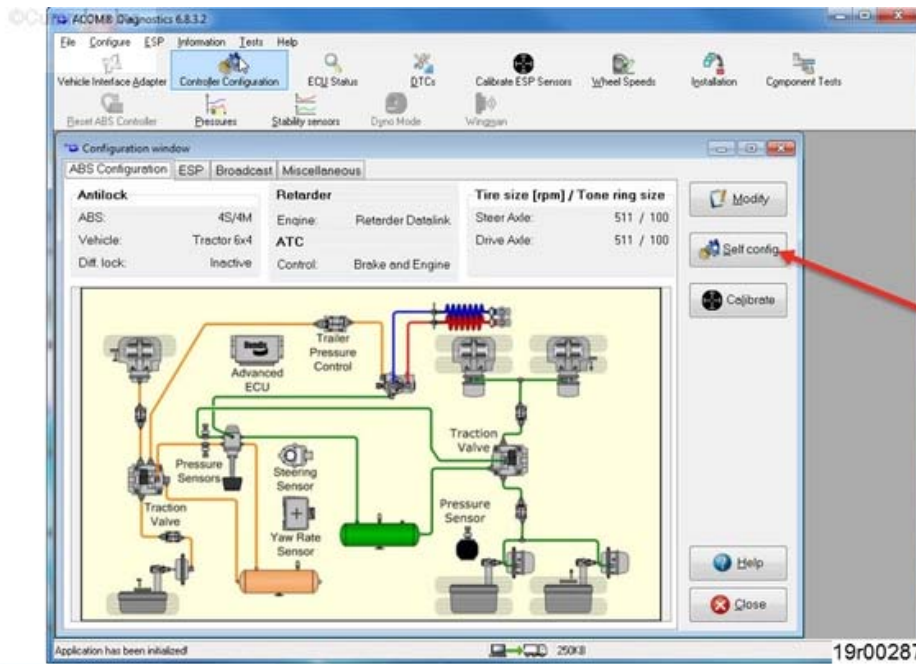
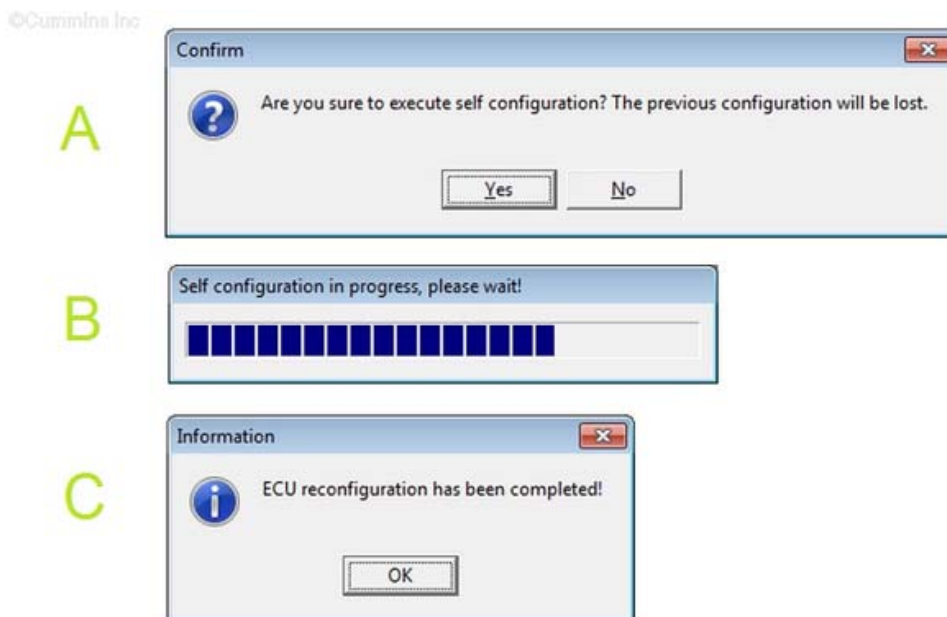


Figure 2, ACom® Self Configure

4. Select Yes in confirmation prompt. See letter A in Figure 3 below.
5. Wait for configuration process to complete. See letter B in Figure 3 below.
6. Select OK to complete ECU Self Configuration. See letter C in Figure 3 below.



19r00288

Figure 3, ACom® Pop up Boxes

7. Verify configuration as shown in Figure 4 below is correct:

- Engine: Not Controlled

- ABS

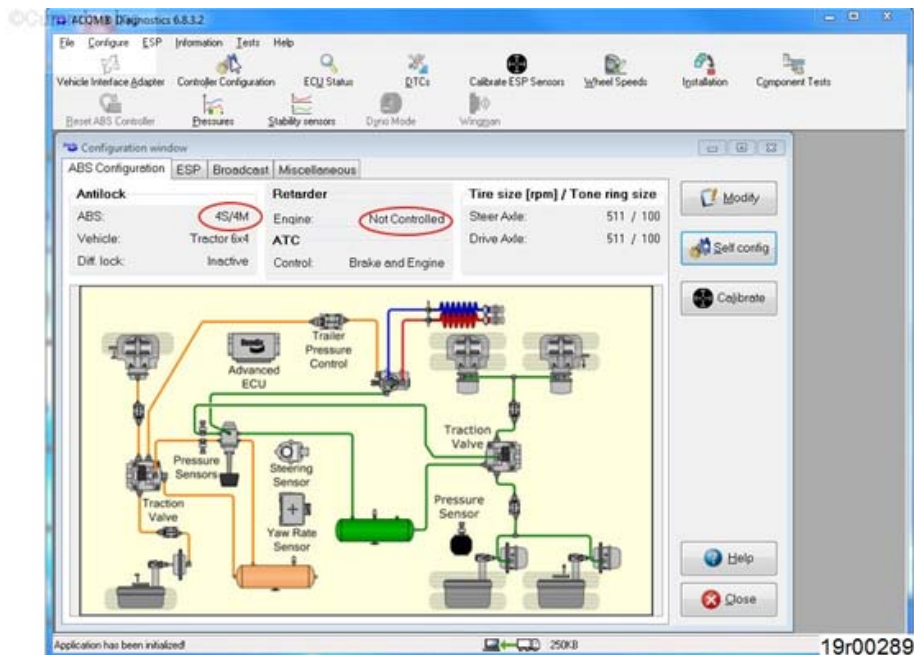


Figure 4, ACom® Verify Configuration

Warranty Statement

The information in this document authorizes specific changes to the repair practice for failures covered under product warranty coverages.

Document History

Date	Details
2015-5-18	Module Created
2016-9-21	Added B6.7 CM2350 B121B.

Last Modified: 23-Sep-2016

Copyright © 2000-2010 Cummins Inc. All rights reserved.