

Technical Service Bulletin Number
--

TSB150068



Technical Service Bulletin

Subject

Fault Code 2722 Due to Low Pressure Regulator Housing Casting Defect

Issue

Fault code 2722 logs during extended motoring conditions due to a low pressure regulator housing casting defect. The casting defect is located in the low pressure regulator bore and allows a small volume of fuel to pass around the low pressure regulator o-ring seal. During extended motoring conditions this fuel can lead to fuel regulator outlet pressure exceeding the fault code threshold.

Verification

Product Affected:

- ISX12 G CM2180 EJ

Affected engines are before engine serial number (ESN) 75029933 or an engine build date of 09 June 2014.

Use INSITE™ electronic service tool to review the fault code snap shot for fault code 2722.

If fault code 2722 occurred with Fuel Control Valve Command at 0% and Percent Load at 0%, inspect the low pressure regulator housing for a casting defect.

Remove the low pressure regulator. Use the following procedure in the ISX12 G CM2180 EJ Service Manual, Bulletin 4310682. [Refer to Procedure 005-047 in Section 5.](#)

Inspect the low pressure regulator bore in the low pressure regulator housing for signs of

pitting. The pitting may appear to be dirt or debris, but can **not** be cleaned from the low pressure regulator bore. See Figures 2 through 4.

Revisions to the low pressure regulator casting were implemented on 07 April 2014. Revision changes include adding material to the low pressure regulator casting prior to machining. Suspect low pressure regulator casting dates are prior to 097 14. Date code format is DDD YY. 097 14 is equivalent to the 97th day in 2014. See Figure 5.

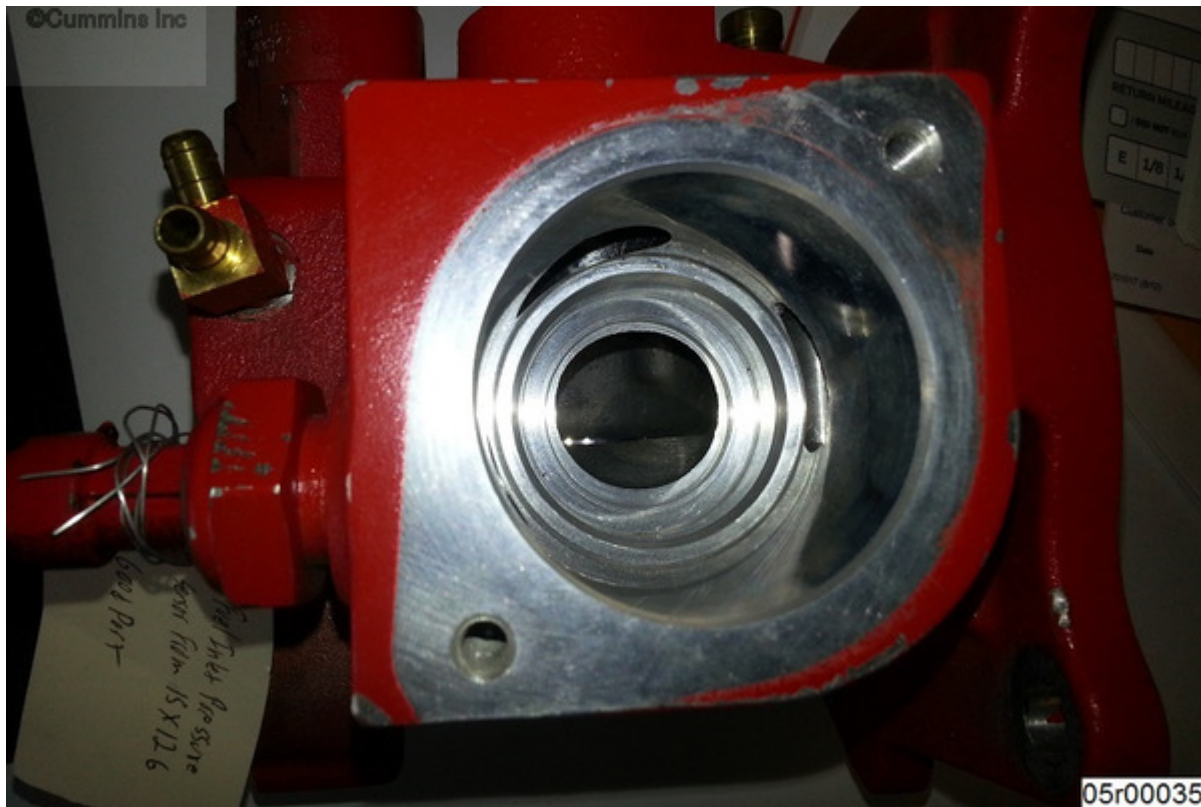


Figure 1, New Low Pressure Regulator

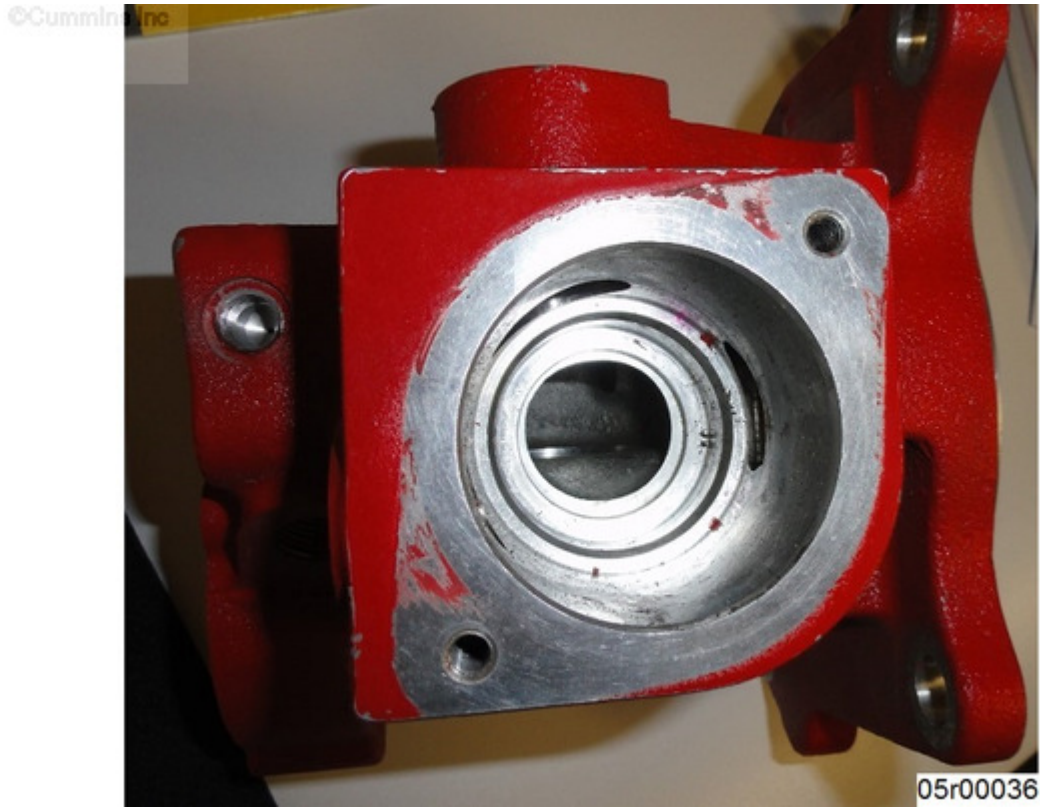


Figure 2, Low Pressure Regulator Bore with Pitting

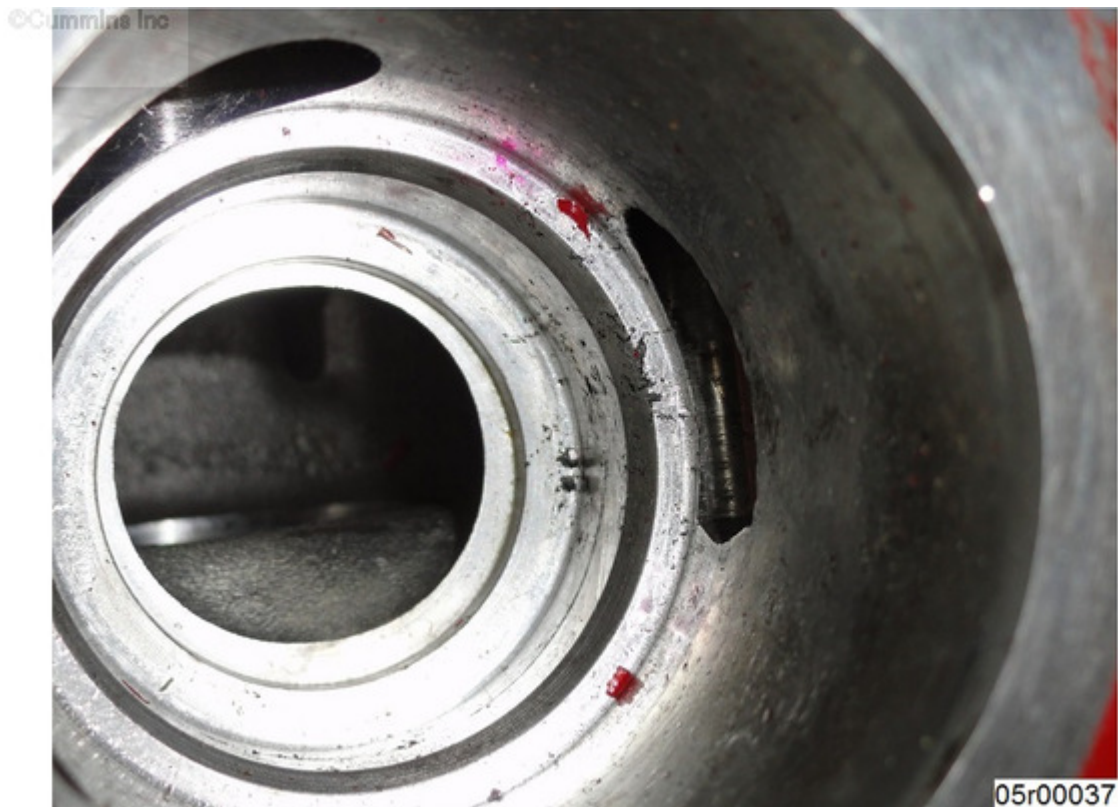


Figure 3, Low Pressure Regulator Bore with Pitting



Figure 4, Low Pressure Regulator Bore with Pitting

©Cummins Inc

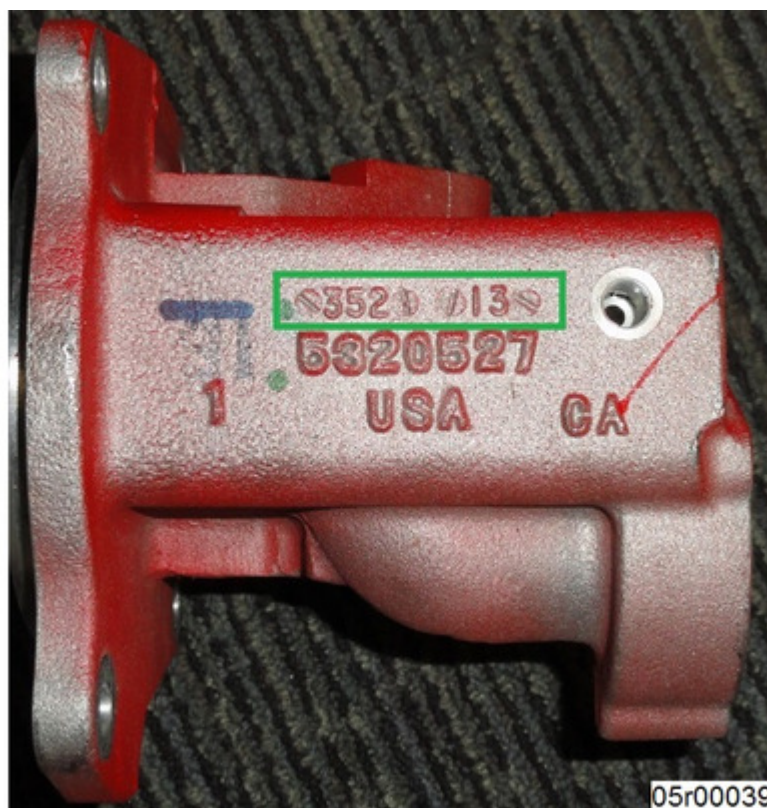


Figure 5, Low Pressure Regulator Date Code

Resolution

If pitting is found, replace the low pressure regulator housing. Use the following procedure in the ISX12 G CM2180 EJ Service Manual, Bulletin 4310682. [Refer to Procedure 005-238 in Section 5.](#)

Warranty Statement

The information in this document authorizes specific changes to the repair practice for failures covered under product warranty coverages.

Document History

Date	Details
2015-5-11	Module Created

Last Modified: 15-May-2015

Copyright © 2000-2010 Cummins Inc. All rights reserved.