

MIL "ON" DTC P2610

Service Category Engine/Hybrid System

Section Engine Control

Market USA

Toyota Supports
ASE Certification 

Applicability

YEAR(S)	MODEL(S)	ADDITIONAL INFORMATION
2014 - 2016	Sequoia	

Introduction

Some 2014 – 2016 Sequoia vehicles may exhibit a MIL "ON" condition with Diagnostic Trouble Code (DTC) P2610, indicating an ECM/PCM Engine Off Timer Performance condition. The Engine Control Module (ECM) logic has been modified to reduce the possibility of this condition. Follow the Repair Procedure below to address this condition.

MIL "ON" DTC P2610

Warranty Information

OP CODE	DESCRIPTION	TIME	MODEL YEAR	ENGINE	DRIVETRAIN	OFF	T1	T2
EG1614	Reprogram ECM (PCM)	0.4	2014 – 2016	3UR-FE	STD 2WD/4WD	89661-0CN80 89661-0CN81 89661-0CN82	8A	99
						89661-0CN80 89661-0CN81 89661-0CN82		
					TOW 2WD/4WD	89661-0CL20 89661-0CL21 89661-0CL22		
						89661-0CL20 89661-0CL21 89661-0CL22		
			2014 – 2015	3UR-FBE	FBE	89661-0CP70 89661-0CP71 89661-0CP72 89661-0CP73		
						2016		

APPLICABLE WARRANTY

- This repair is covered under the Toyota Federal Emission Warranty. This warranty is in effect for 96 months or 80,000 miles, whichever occurs first, from the vehicle's in-service date.
- Warranty application is limited to occurrence of the specified condition described in this bulletin.

MIL "ON" DTC P2610

Parts Information

MODEL YEAR	ENGINE	DRIVETRAIN	PART NUMBER		PART NAME	QTY
			PREVIOUS	NEW		
2014 – 2016	3UR-FE	STD 2WD/4WD	89661-0CN80 89661-0CN81 89661-0CN82	89661-0CN83	Computer, Engine Control (ECM)	–
			89661-0CN80 89661-0CN81 89661-0CN82	89661-0CN83		–
		TOW 2WD/4WD	89661-0CL20 89661-0CL21 89661-0CL22	89661-0CL23		–
			89661-0CL20 89661-0CL21 89661-0CL22	89661-0CL23		–
2014 – 2015	3UR-FBE	FBE	89661-0CP70 89661-0CP71 89661-0CP72 89661-0CP73	89661-0CP74	–	
2016			89661-0CQ30	89661-0CQ31	–	
–	–	–	00451-00001-LBL		Authorized Modification Labels	1

NOTE

- The ECM (PCM) should NOT be replaced as part of the Repair Procedure.
- Authorized Modification Labels may be ordered in packages of 25 from the Materials Distribution Center (MDC) through *Dealer Daily – Dealer Support Materials Orders*.


MIL "ON" DTC P2610

Required Tools & Equipment

REQUIRED EQUIPMENT	SUPPLIER	PART NUMBER	QTY
Techstream 2.0*	ADE	TS2UNIT	1
Techstream Lite		TSLITEPDLR01	
Techstream Lite (Green Cable)		TSLP2DLR01	

NOTE

- Only ONE of the Techstream units listed above is required.
- Software version 11.10.034 or later is required.
- Additional Techstream units may be ordered by calling Approved Dealer Equipment (ADE) at 1-800-368-6787.
- The Diagnostic Tester is NOT recommended for flash reprogramming. Please use Techstream or an approved J2534 interface to perform flash reprogramming updates. Visit techinfo.toyota.com for more information regarding J2534 reprogramming.



SPECIAL SERVICE TOOLS (SST)	PART NUMBER	QTY
GR8 Battery Diagnostic Station*	00002-MCGR8	1

NOTE

Additional SSTs may be ordered by calling 1-800-933-8335.

* Essential SST.

MIL "ON" DTC P2610

Calibration Information

MODEL YEAR	ENGINE	DRIVETRAIN	ECU	CALIBRATION ID	
				PREVIOUS	NEW
2014 – 2016	3UR-FE	STD 2WD	Main	30CJ4000 30CJ4100 30CJ4200	30CJ4300/50C88100
			Sub	50C8800	
		STD 4WD	Main	30CJ4001 30CJ4101 30CJ4201	30CJ4301/50C88101
			Sub	50C8801	
		TOW 2WD	Main	30CG3000 30CG3100 30CG3200	30CG3300/50C87100
			Sub	50C87000	
		TOW 4WD	Main	30CG3001 30CG3101 30CG3201	30CG3301/50C87101
			Sub	50C87001	
2014 – 2015	3UR-FBE	FBE	Main	30CM0000 30CM0100 30CM0200 30CM0300	30CM0400/50CA2100
			Sub	50CA2000	
2016			Main	30CM4000	30CM4100

Repair Procedure

- Using Techstream, check for stored DTCs. Confirm the following DTC is present:
P2610 – ECM/PCM Engine Off Timer Performance

MIL "ON" DTC P2610

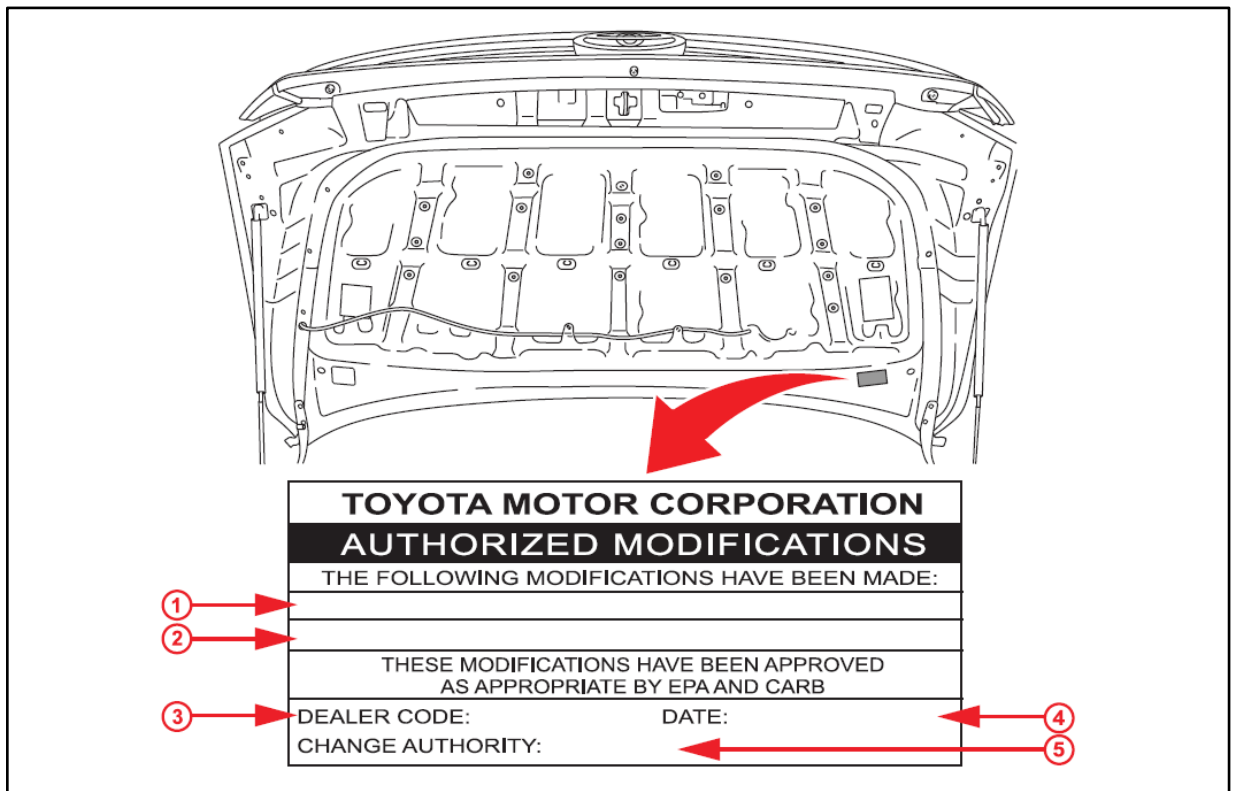
Repair Procedure (Continued)

2. Check for the Authorized Modifications Label affixed to the vehicles in the location shown below. Confirm if the ECM (PCM) calibration has been updated.

Is the calibration ID listed NOT the latest ECM (PCM) calibration?

- **YES** — Continue to step 3.
- **NO** — This bulletin does NOT apply. Continue diagnosis using the applicable Repair Manual.

Figure 1. Location of Authorized Modification Label for 2014 – 2016 Sequoia



1	Replacement ECM (PCM) Part Number (i.e., 89661-0CN83 or 89661-0CL23 etc.)
2	New Calibration ID (i.e., 30CJ4300 or 30CJ4301)
3	Dealer Code

4	Date Completed
5	This SB Number

MIL "ON" DTC P2610

Repair Procedure (Continued)

- Flash reprogram the ECM (PCM).

NOTE

- The GR8 Battery Diagnostic Station **MUST** be used in Power Supply Mode to maintain battery voltage at 13.5 volts while flash reprogramming vehicle.
- For details on how to use the GR8 Battery Diagnostic Station, refer to the [GR8 Instruction Manual](#) located on the Technical Information System (TIS), *Diagnostics – Tools & Equipment – Battery Diagnostics*.

Follow the procedures outlined in Service Bulletin No. [T-SB-0012-13](#), "Techstream ECU Flash Reprogramming Procedure," and flash the ECM (PCM) with the NEW calibration file update.

- Install the Authorized Modifications Label.
 - Using a permanent marker, enter the following information on the label:
 - ECM part number [*Refer to the **Parts Information** section for the **NEW PART NUMBER***]
 - Calibration ID(s) [*Refer to the **Calibration Information** section for the **NEW CALIBRATION ID***]
 - Dealer Code
 - Repair Date
 - Change Authority [**This bulletin number**]
- Affix the Authorized Modifications Label to the vehicle at the location shown in Figure 1. The Authorized Modifications Label is available through the MDC, P/N 00451-00001-LBL.
- Test drive vehicle to confirm proper vehicle operation.