

Classification:

EL16-023

Reference:

ITB16-021

COPYRIGHT© NISSAN NORTH AMERICA, INC.

Date:

June 27, 2016

2014 - 2015 Q50; THEFT ALARM SOUNDS WHEN VEHICLE IS LOCKED, UNLOCKED, OR DOOR/TRUNK OPENED

APPLIED VEHICLES: 2014 – 2015 Q50 (V37)
2014 – 2015 Q50 Hybrid (V37)

IF YOU CONFIRM

Intermittently, the theft alarm triggers (horn sounds and lights flash) when one of the following occur:

- Using the lock, unlock, or trunk open function on the Intelligent Key
- Pushing a handle request switch (door or trunk)
- Touching a door handle one touch unlock sensor
- Opening a door or the trunk with the vehicle unlocked

and

CONSULT-III plus (C-III plus) shows the last item to trigger the theft alarm is BATTERY.

- Refer to Check Last Item to Trigger Theft Alarm on the next page.

ACTION

Replace the Body Control Module (BCM).

- Refer to the Electronic Service Manual, section BCS-Body Control Systems, for replacement information.
- Use the new BCM listed in the Parts Information.

Infiniti Bulletins are intended for use by qualified technicians, not 'do-it-yourselfers'. Qualified technicians are properly trained individuals who have the equipment, tools, safety instruction, and know-how to do a job properly and safely. NOTE: If you believe that a described condition may apply to a particular vehicle, DO NOT assume that it does. See your Infiniti retailer to determine if this applies to your vehicle.

Check Last Item to Trigger Theft Alarm

1. Turn the ignition ON, engine OFF / not Ready.
2. Connect the plus VI and start C-III plus.
3. Navigate the C-III plus to the screen shown in Figure 1.
 - Diagnosis (One System) or Diagnosis (All Systems) and then BCM.
4. Select **THEFT ALM**.

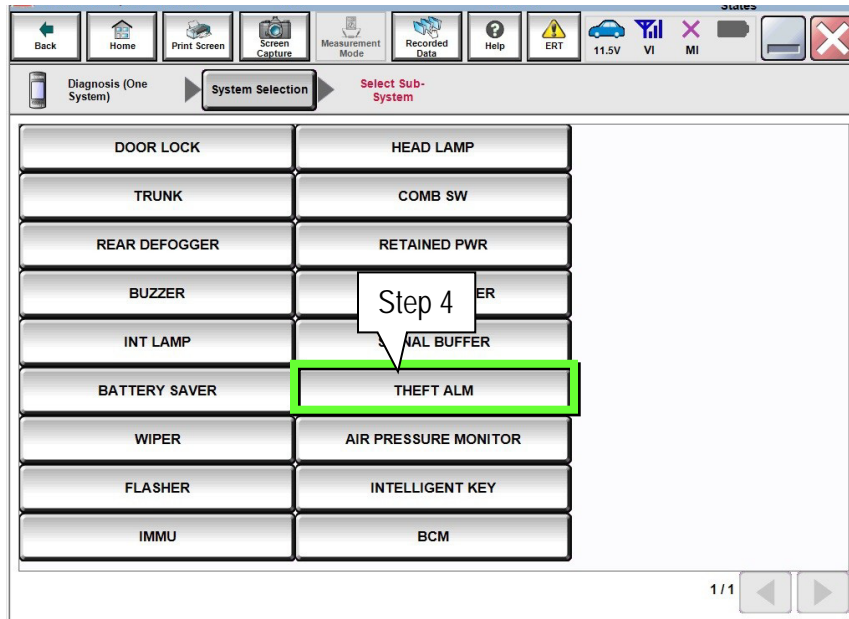


Figure 1

5. Select **Work Support**.

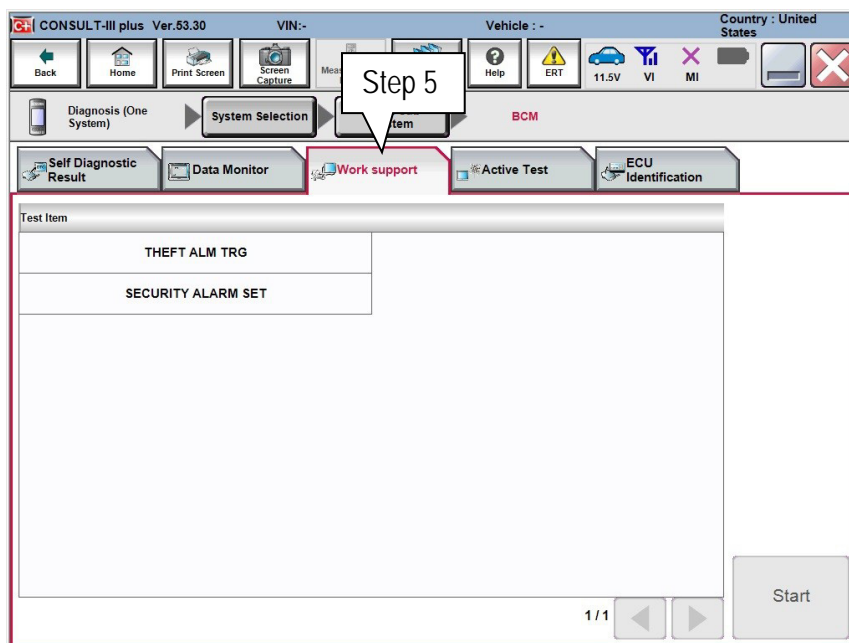


Figure 2

6. Select THEFT ALM TRG, then Start.

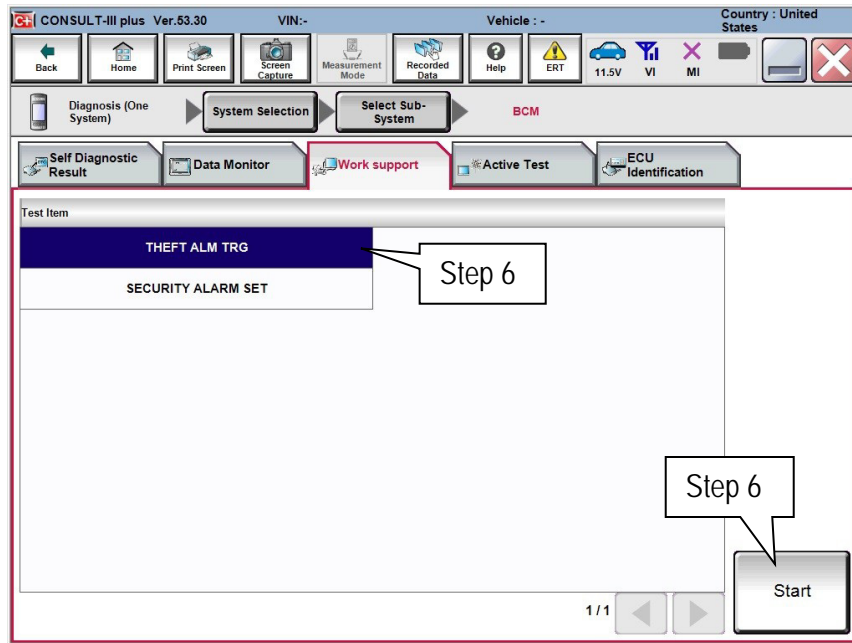


Figure 3

7. CONSULT-III plus will display a list of all the theft alarm Monitor Items (Figure 4).

- If BATTERY indicates **On**, and the other conditions under If You Confirm on page 1 are satisfied, this bulletin applies.
- If BATTERY indicates **Off**, this bulletin does not apply.

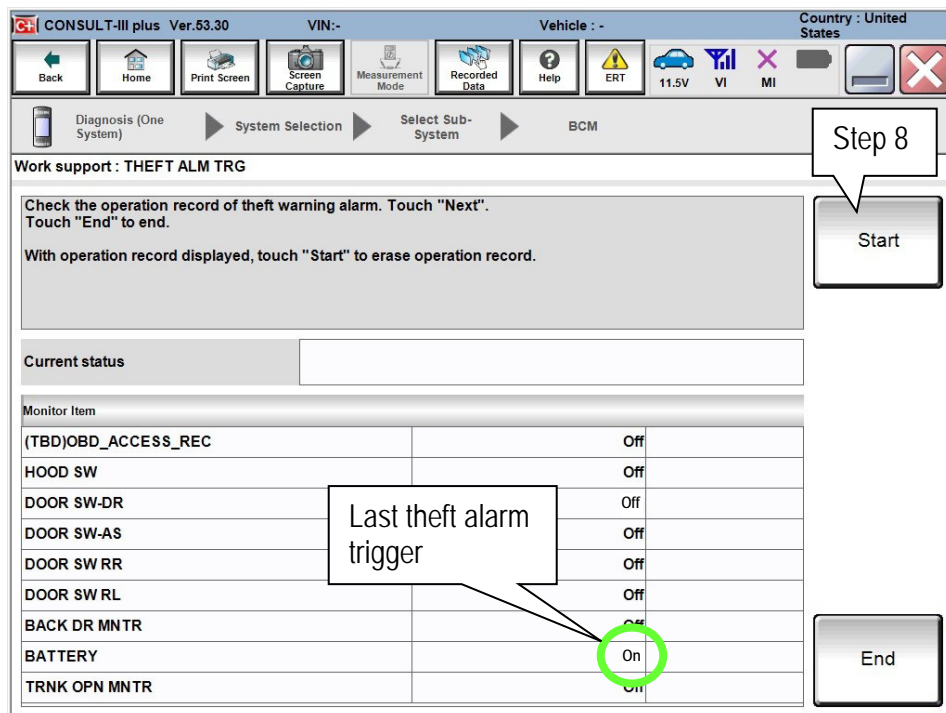


Figure 4

8. After a theft alarm trigger has been noted, the history can be cleared by selecting Start.

PARTS INFORMATION

DESCRIPTION	PART NUMBER	QUANTITY
Body Control Module (BCM)	284B1 – 4HB1B	1

CLAIMS INFORMATION

Submit a Primary Part (PP) type claim using the following claims coding:

DESCRIPTION	PFP	OP CODE	SYM	DIA	FRT
RPL BODY CONTROL/IVMS MODULE	284B1 – 4HB1B	RD94AA	ZE	32	(1)

(1) Reference the current Infiniti Warranty Flat Rate Manual and use the indicated FRT.

