

Classification:  
 EL16-029

 Reference:  
 ITB16-031

 COPYRIGHT© NISSAN NORTH AMERICA, INC.  
 Date:  
 August 5, 2016

## 2016 QX60; AUTOMATIC BACK DOOR CALIBRATION PROCEDURE

APPLIED VEHICLE: 2016 QX60 (L50)  
 2016 QX60 Hybrid (L50)

### SERVICE INFORMATION

As of the publication date of this bulletin, the Automatic Back Door calibration procedure in the Electronic Service Manual (ESM) is incorrect.

If for any reason the Automatic Back Door requires calibration, use the procedure in this bulletin.

### SERVICE PROCEDURE

Calibrate the Automatic Back Door as follows:

1. Connect the CONSULT PC to the vehicle with the plus VI and open CONSULT-III plus (C-III plus).
2. Fully close the Automatic Back Door by hand, if not already closed.
3. Navigate to the C-III plus screen shown in Figure 1 and then select **AUTO BACK DOOR**.

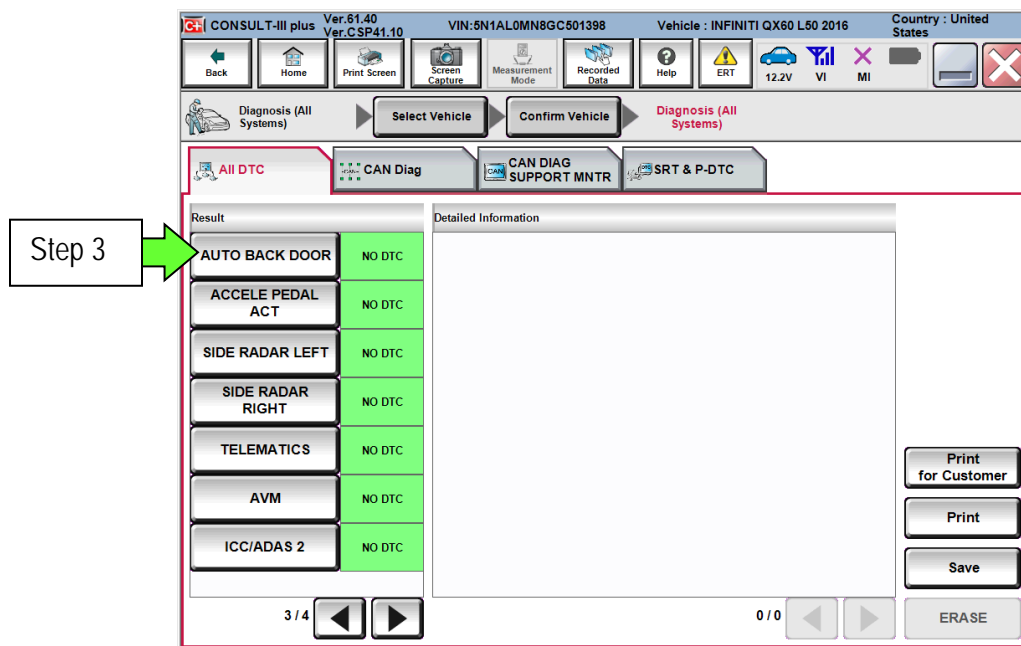


Figure 1

Infiniti Bulletins are intended for use by qualified technicians, not 'do-it-yourselfers'. Qualified technicians are properly trained individuals who have the equipment, tools, safety instruction, and know-how to do a job properly and safely. NOTE: If you believe that a described condition may apply to a particular vehicle, DO NOT assume that it does. See your Infiniti retailer to determine if this applies to your vehicle.

4. Select **RESET AUTO BACK DOOR STATUS** in “Work Support”.
5. Select **START** to erase the Automatic Back Door position information.

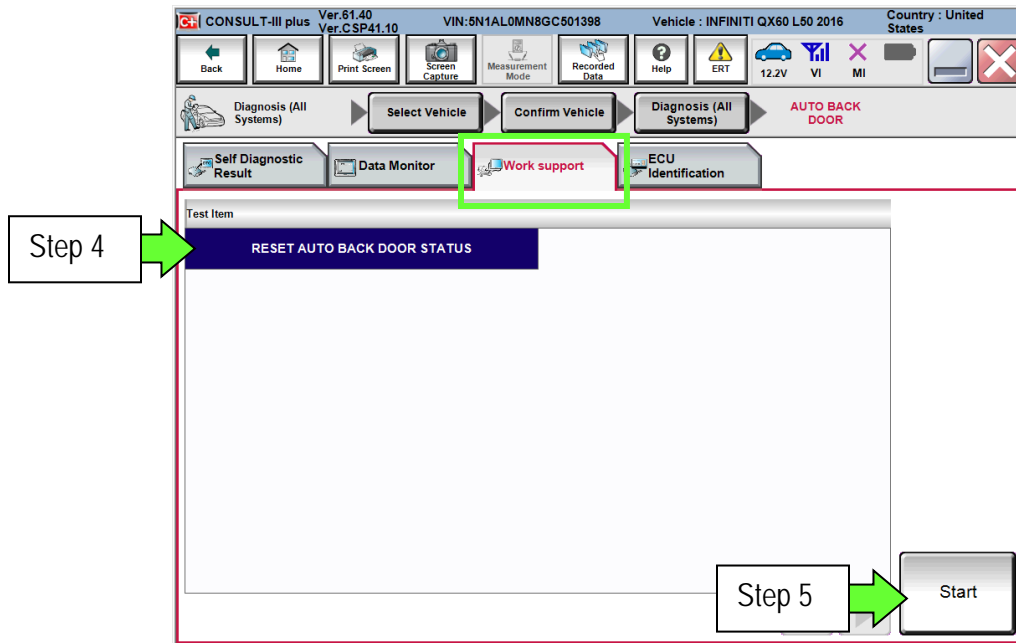


Figure 2

6. When the screen in Figure 3 displays, open the Automatic Back Door with the open switch on the Back Door.
  - The Automatic Back Door will open completely.

**NOTE:** At this time, the automatic operation of back door is performed at half speed.

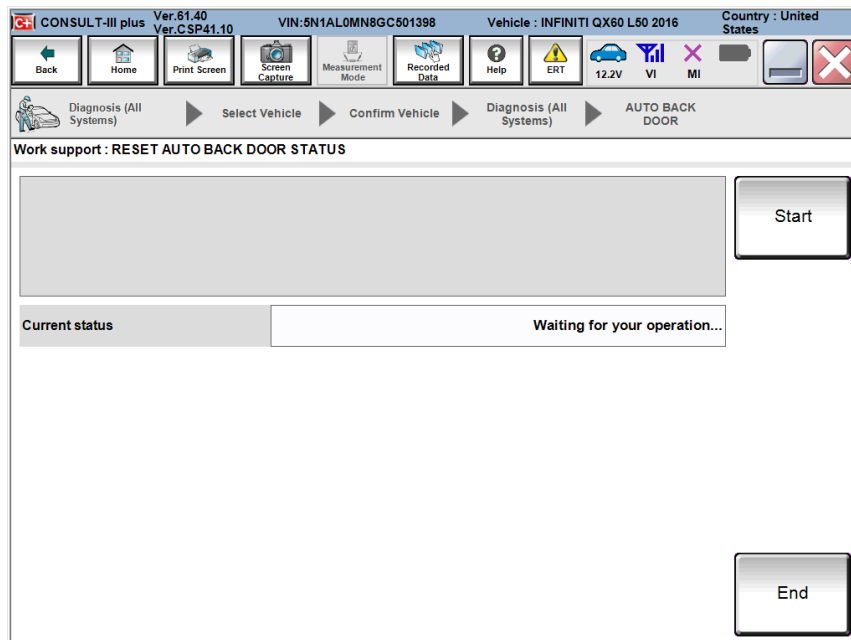


Figure 3

7. Confirm that the Automatic Back Door warning buzzer sounds with two long beeps.
  - Does the Automatic Back Door warning buzzer sound correctly?
    - **YES:** Proceed to step 8.
    - **NO:** Fully close the Automatic Back Door by hand and restart from step 4.
  
8. Fully close the Automatic Back Door; calibration complete.