

Classification:

Reference:

Date:

EL16-034

ITB16-036

September 16, 2016

## 2017 QX30; ELECTRONIC CONTROL UNIT CONFIGURATION

**APPLIED VEHICLES:** 2017 QX30 (H15)

### SERVICE INFORMATION

If an Air Bag Diagnosis Sensor Unit, Engine Control Module, or Transmission Control Module is replaced and the configuration of the old unit could not be saved, use the Service Procedure in this bulletin to:

- Load the VIN specific configuration file from your electronic parts catalog (FAST or equivalent) onto a portable USB storage device (thumb drive).
- Plug the thumb drive into your CONSULT PC.
- Configure the new Air Bag Diagnosis Sensor Unit, Engine Control Module, or Transmission Control Module using the file that you loaded onto the thumb drive.

Infiniti Bulletins are intended for use by qualified technicians, not 'do-it-yourselfers'. Qualified technicians are properly trained individuals who have the equipment, tools, safety instruction, and know-how to do a job properly and safely. NOTE: If you believe that a described condition may apply to a particular vehicle, DO NOT assume that it does. See your Infiniti retailer to determine if this applies to your vehicle.

## SERVICE PROCEDURE

### Obtain VIN Specific Configuration

NOTE: FAST is used for the images in this procedure. Other electronic parts catalogs may be different.

1. Open FAST (or equivalent) and type in the VIN.

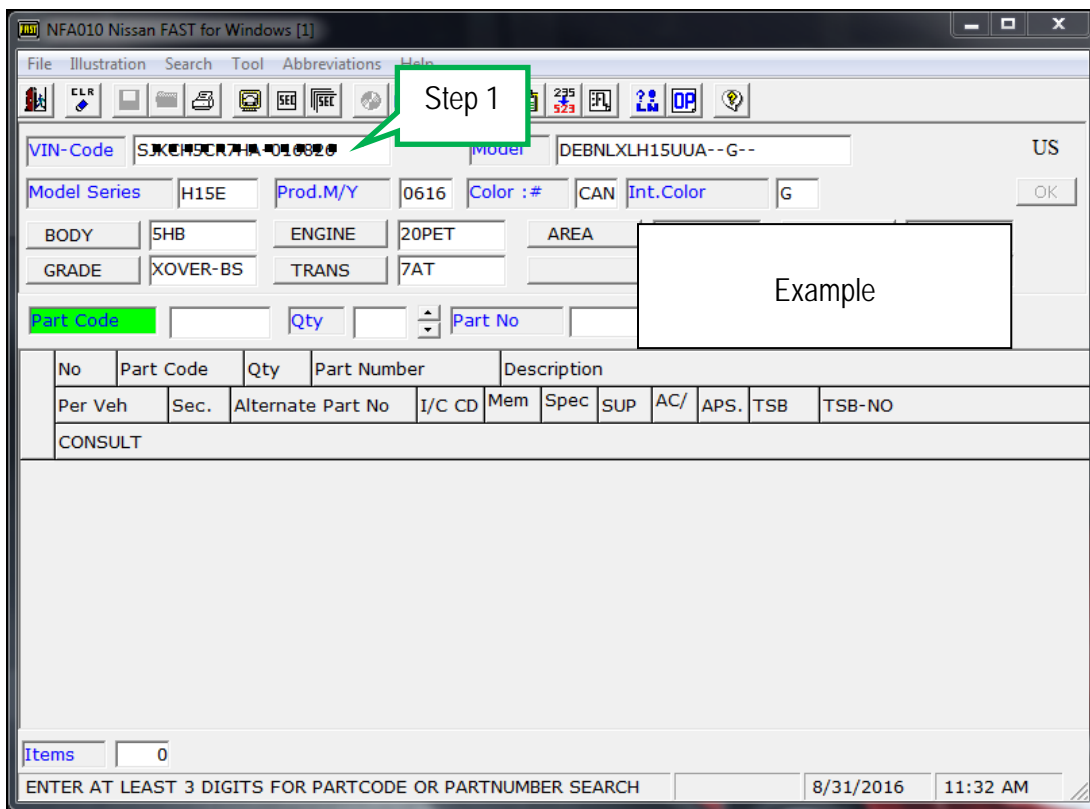


Figure 1

2. Select **ABC** (word search).
3. Type "ROM" into the Input Description search window.
4. Select **OK**.

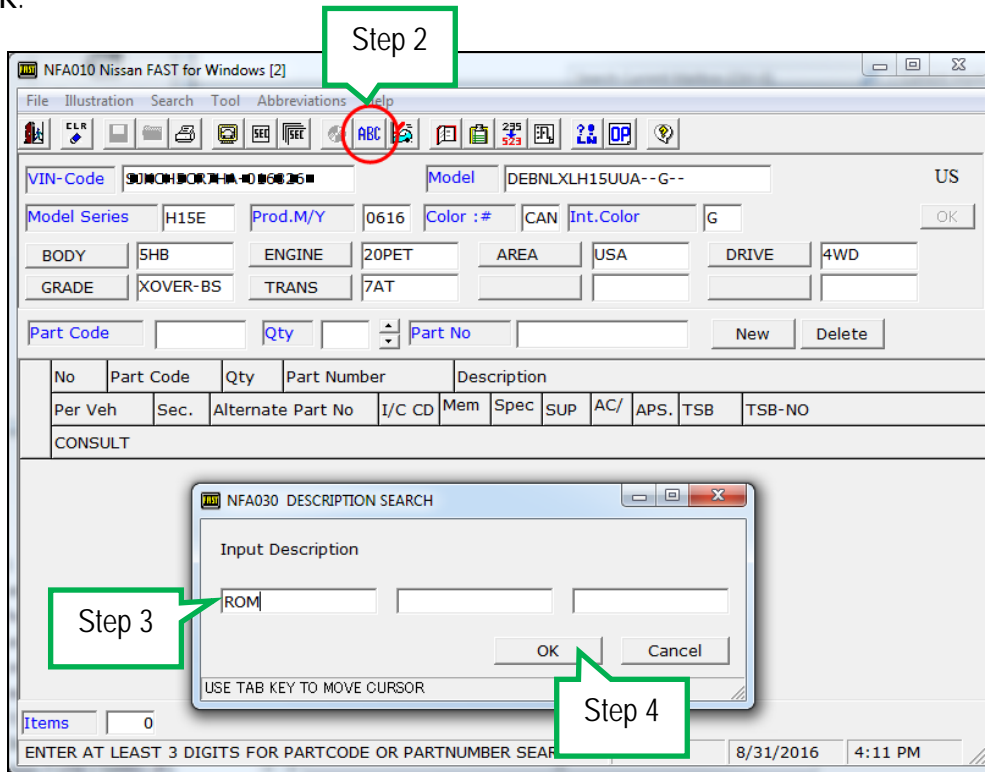


Figure 2

5. Select **OK**.

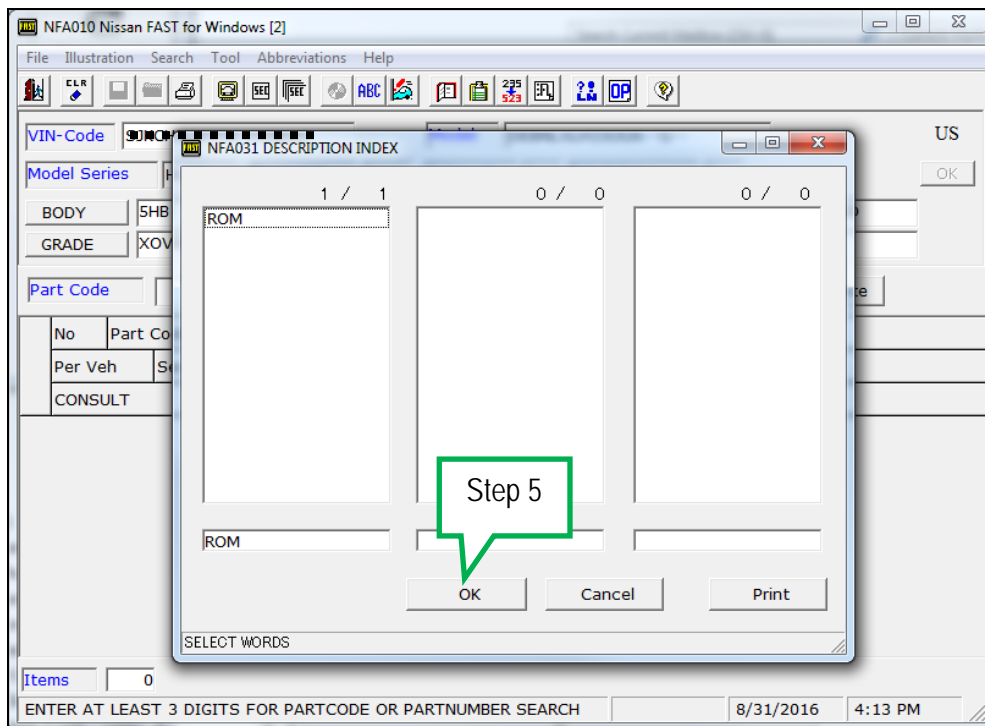


Figure 3

6. Select ROM-DATA ID, ID [appropriate electronic control unit].
7. Select Parts List Display.

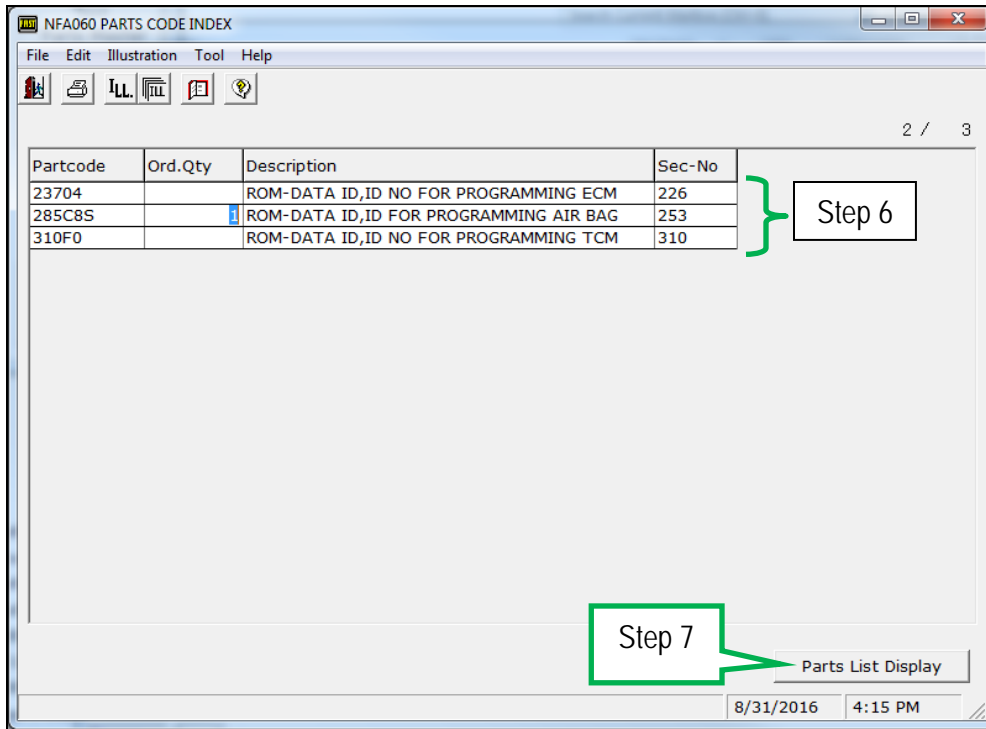


Figure 4

8. Select P/No Search.

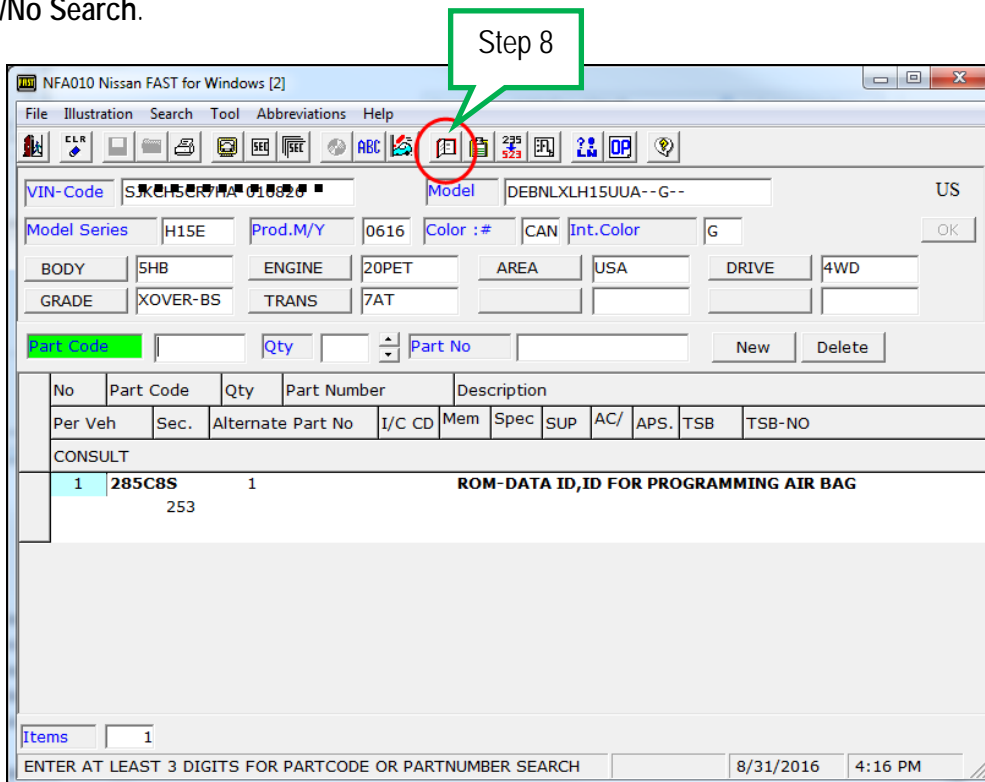


Figure 5

9. Select CONSULT.

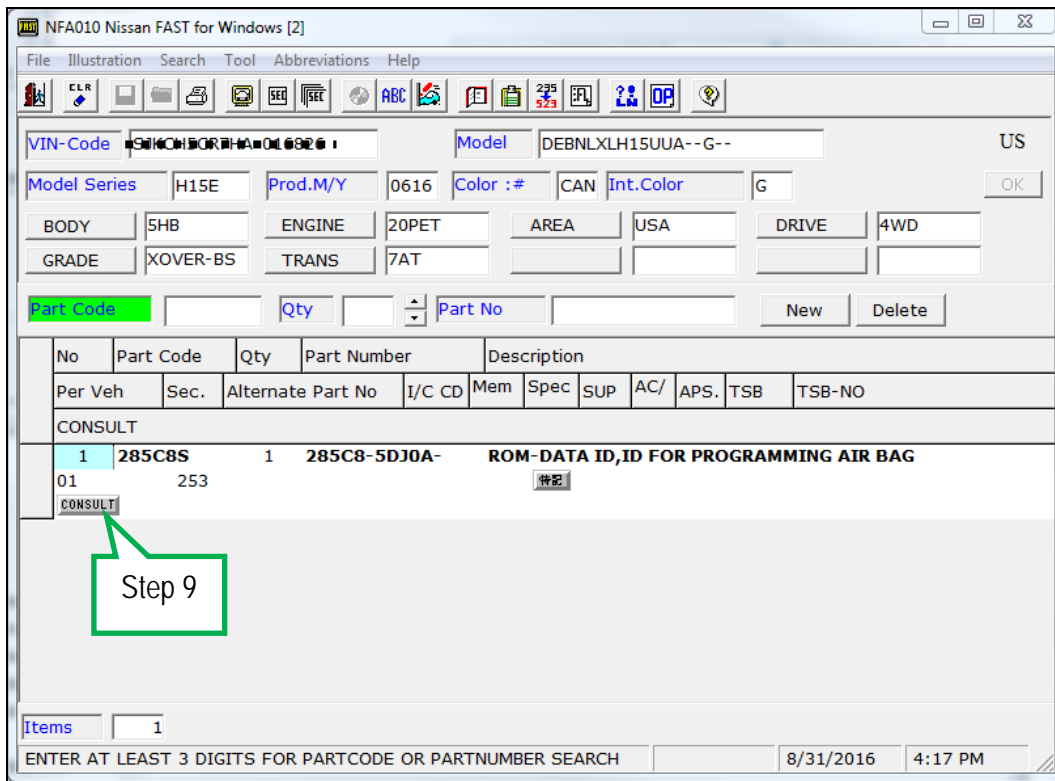


Figure 6

10. Load/save the CSV file onto a thumb drive.

- After selecting CONSULT in step 9, a screen showing your computer desktop with the CSV file should display (see Figure 7.) This is the VIN specific configuration file.
- Do not change the file name or the file type.
- Load/save this CSV file onto a thumb drive.

**NOTE:** It is recommend, at the start, that the thumb drive be blank (all other files erased). This will make it easier to find the file later in this procedure.

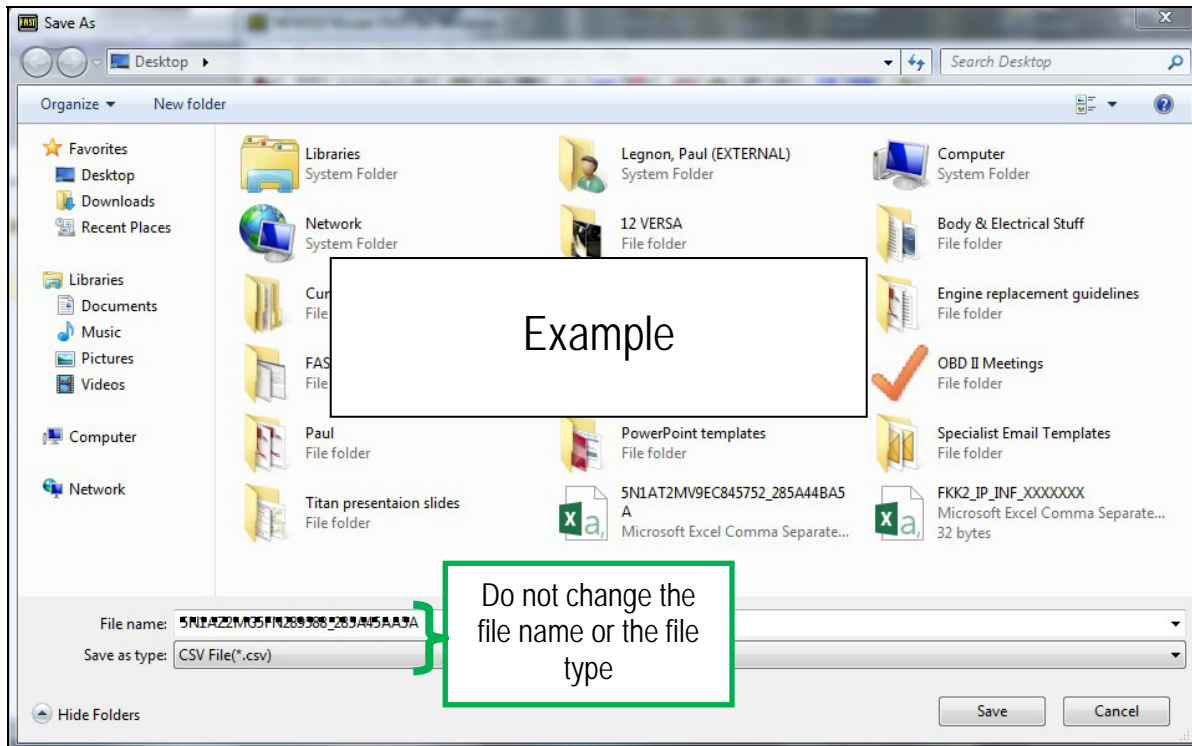


Figure 7

11. Plug the thumb drive (with the configuration file) into the CONSULT PC.

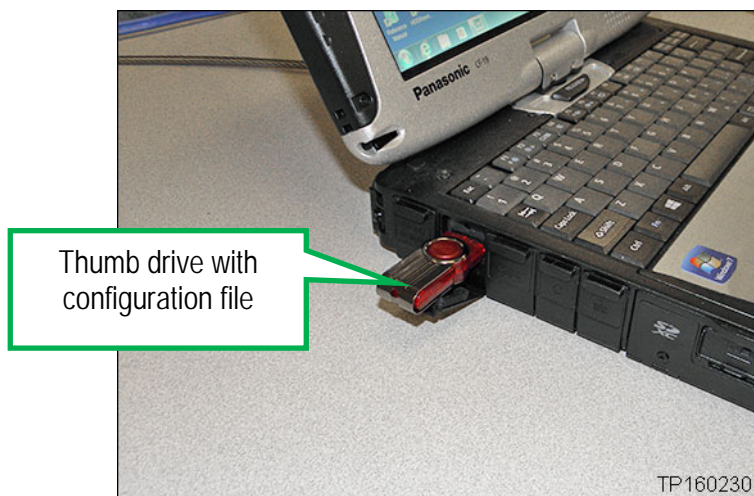


Figure 8

## Configure the New Air Bag Diagnosis Sensor Unit, Engine Control Module, or Transmission Control Module

**NOTE:** The following steps are to be performed after the Air Bag Diagnosis Sensor Unit, Engine Control Module, or Transmission Control Module has been replaced.

12. Connect the CONSULT-III plus (C-III plus) to the vehicle with the plus VI.

13. Turn the ignition ON.

14. Open / start C-III plus.

15. Wait for the plus VI to be recognized.

- The serial number will display when the plus VI is recognized.

16. Select **Re/programming, Configuration**.

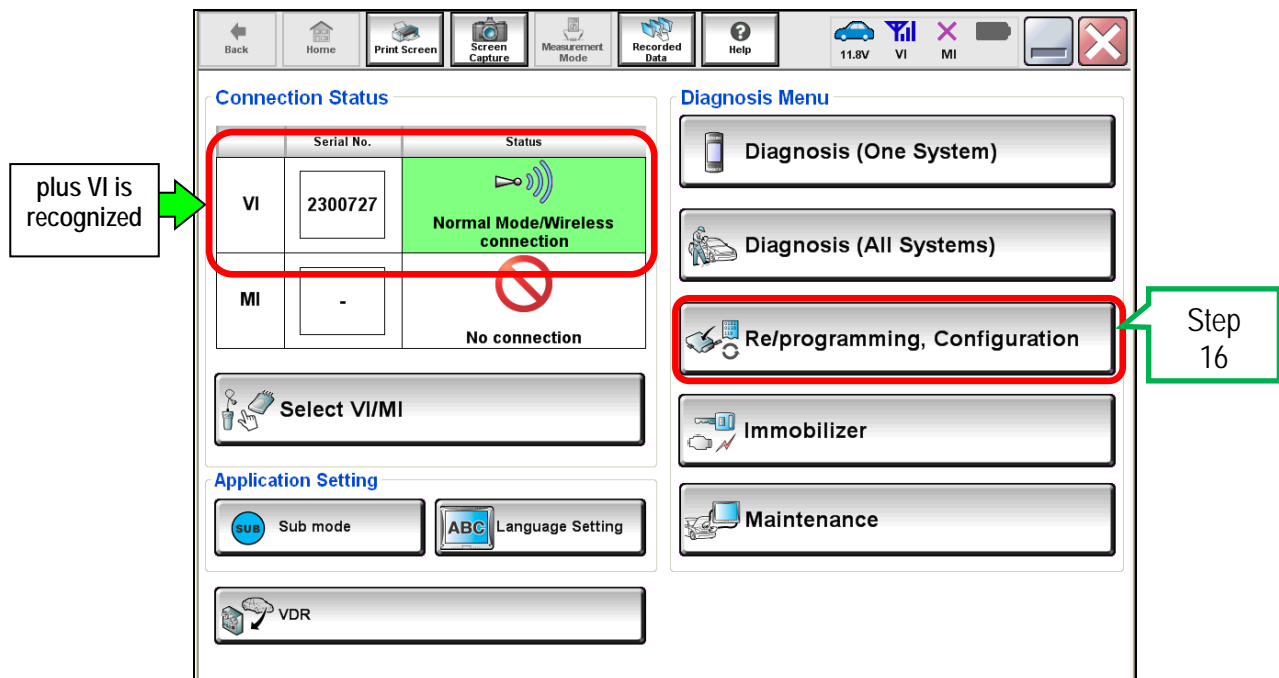


Figure 9

17. Use arrows (if needed) to view and read all precautions.
18. Check the box confirming the precautions have been read.
19. Select **Next**.

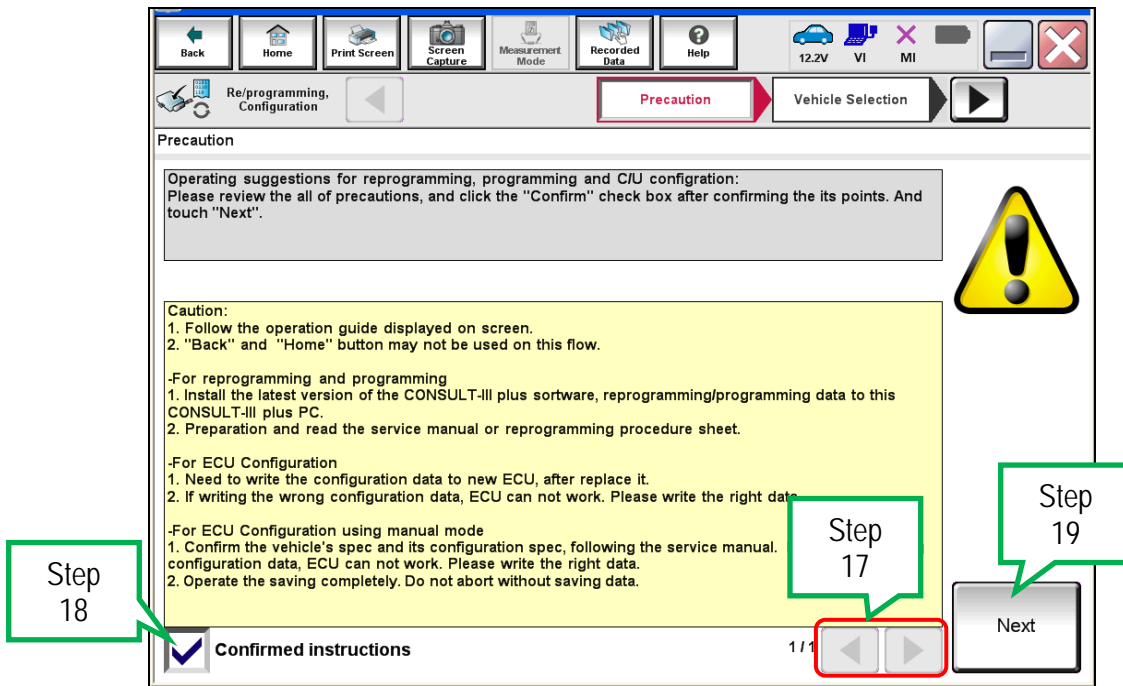


Figure 10

20. If the screen in Figure 11 displays, select **Automatic Selection(VIN)**.

- If the screen in Figure 11 does not display, skip to step 21.

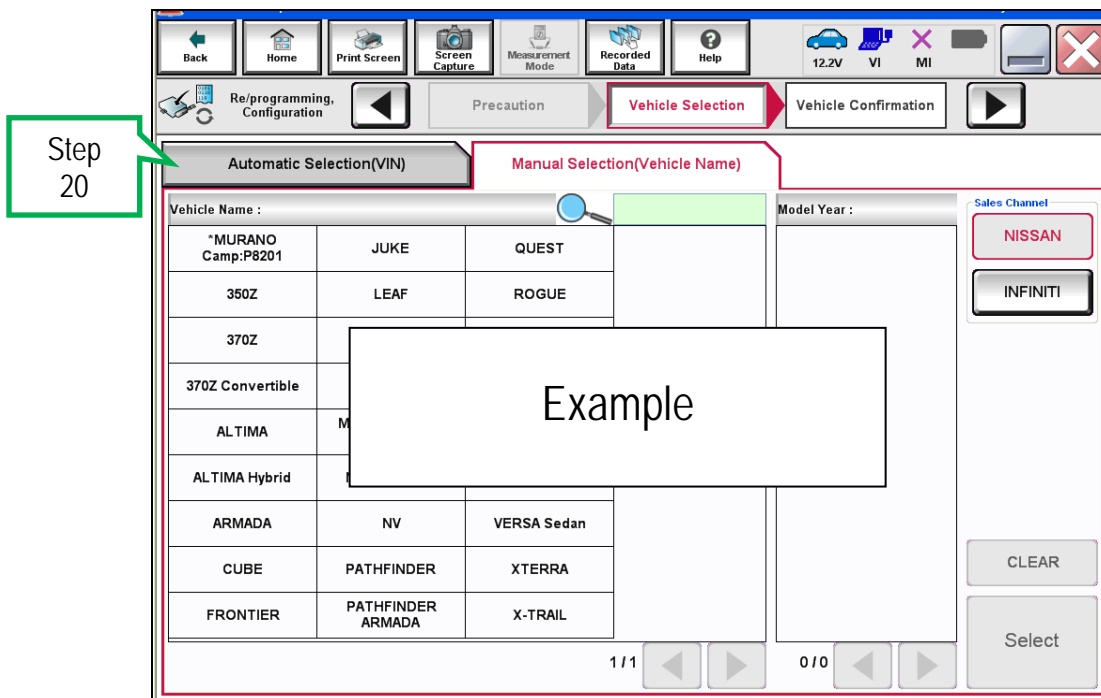


Figure 11



21. Make sure VIN or Chassis # matches the vehicle's VIN.

22. Select Confirm.

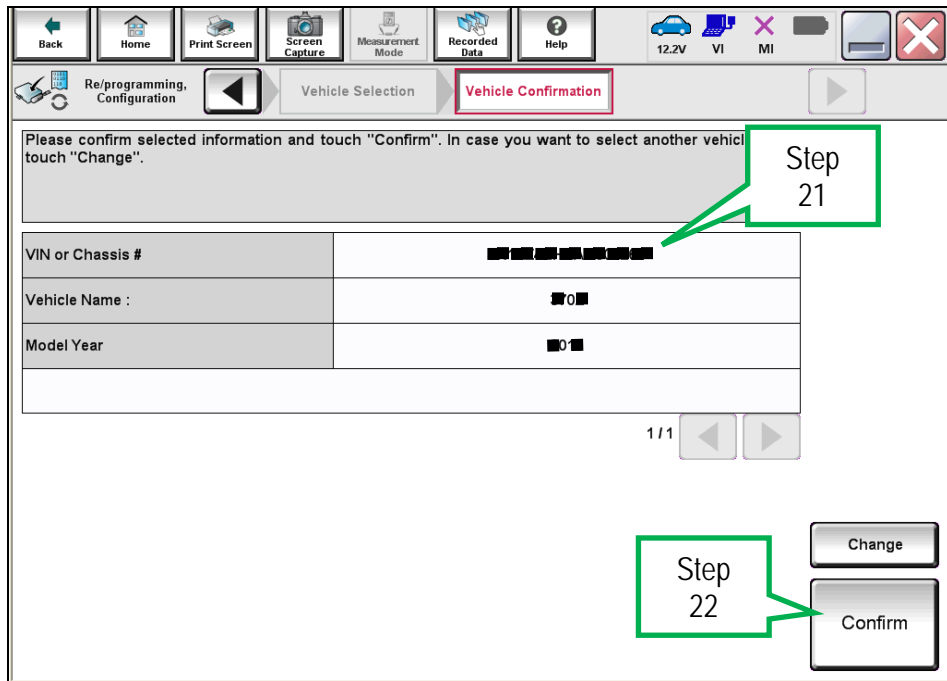


Figure 12

23. Select Confirm.

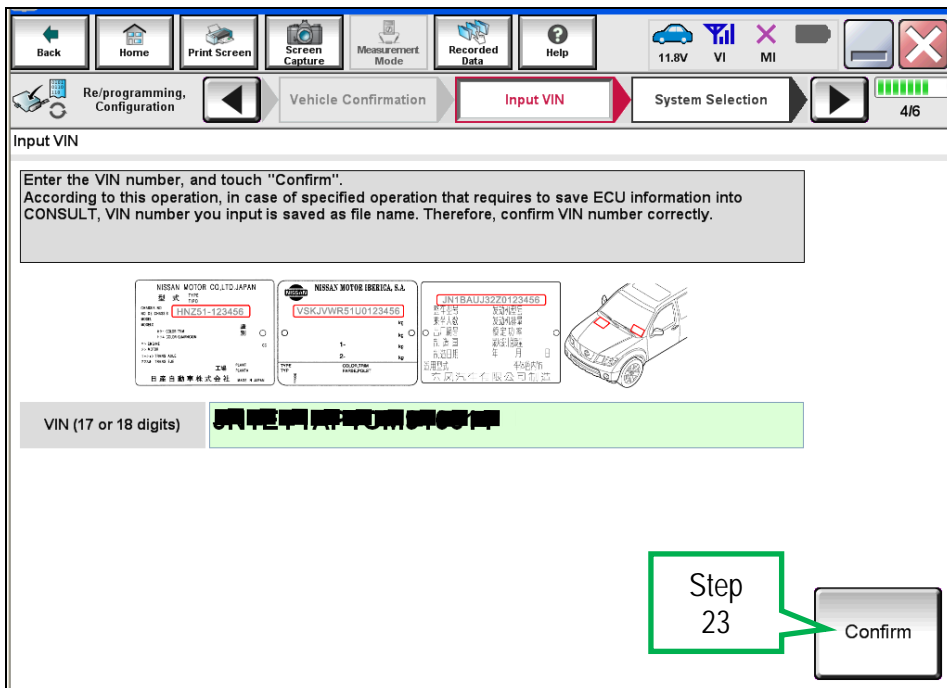


Figure 13

24. Select the appropriate system.

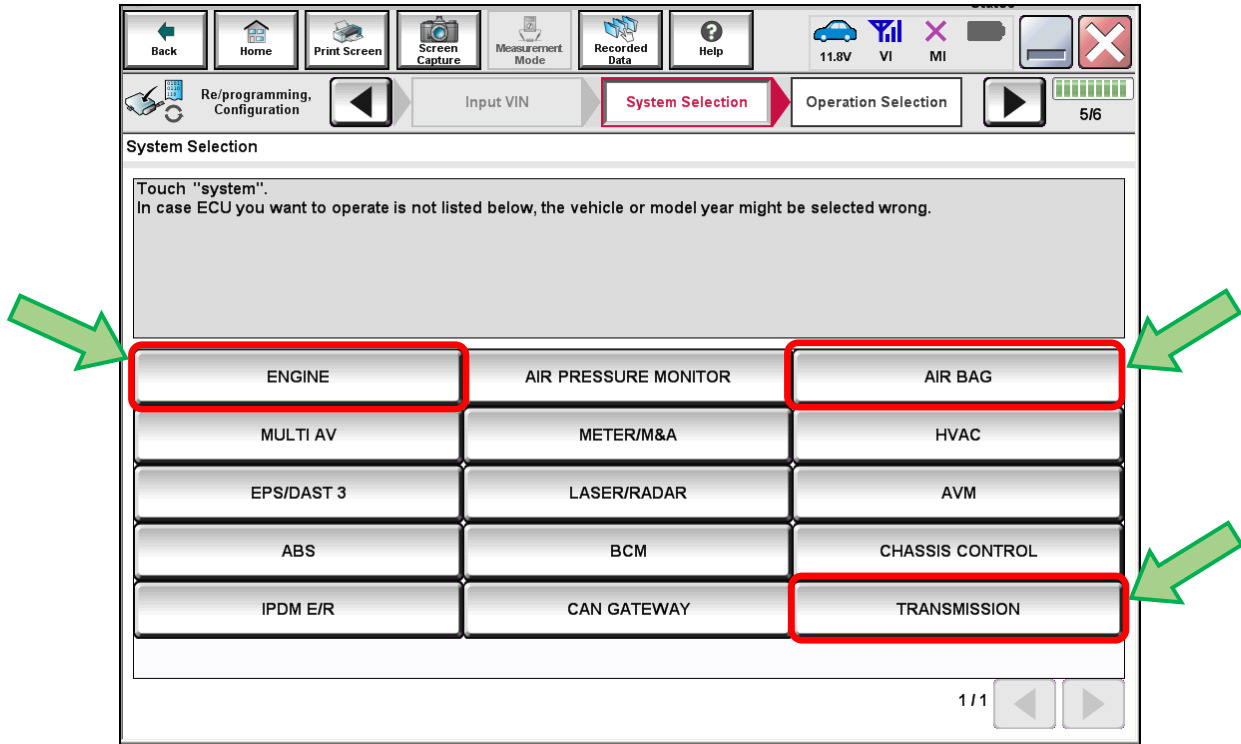


Figure 14

25. Select After ECU Replacement, under vehicle configuration.

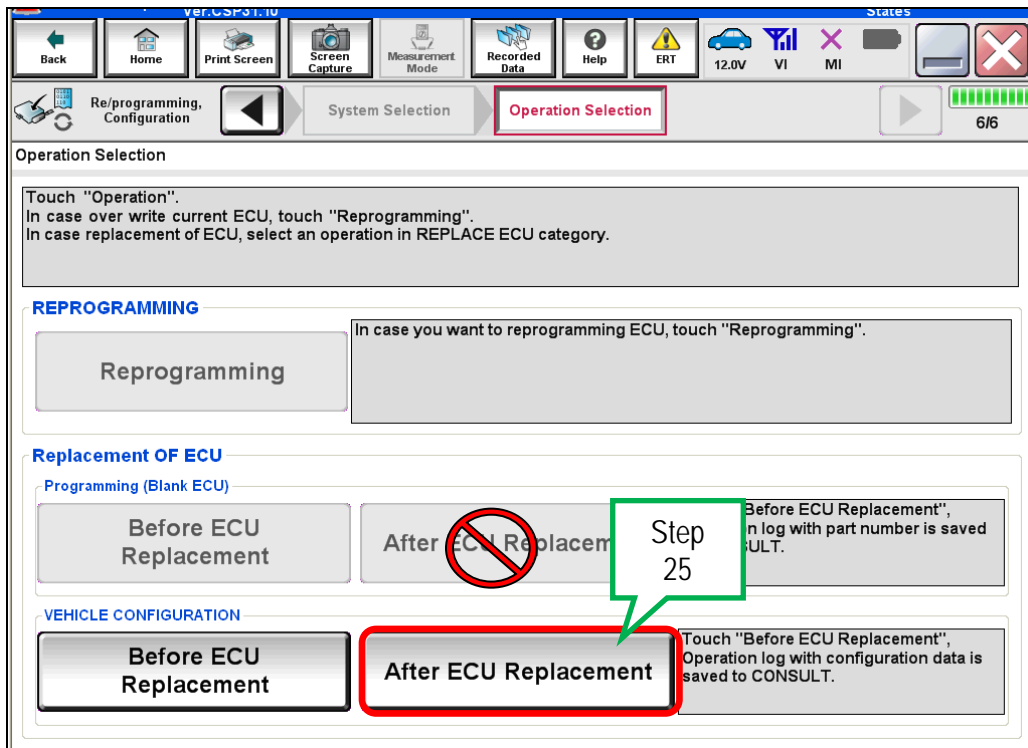


Figure 15

26. Select FAST linked.

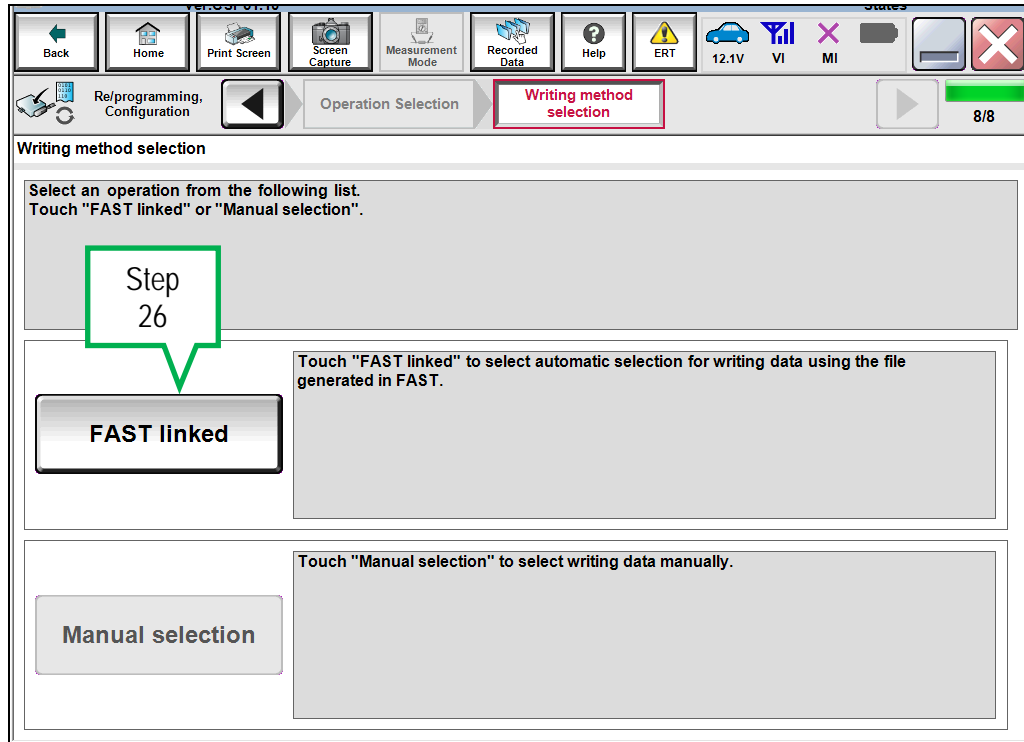


Figure 16

27. Select File Selection.

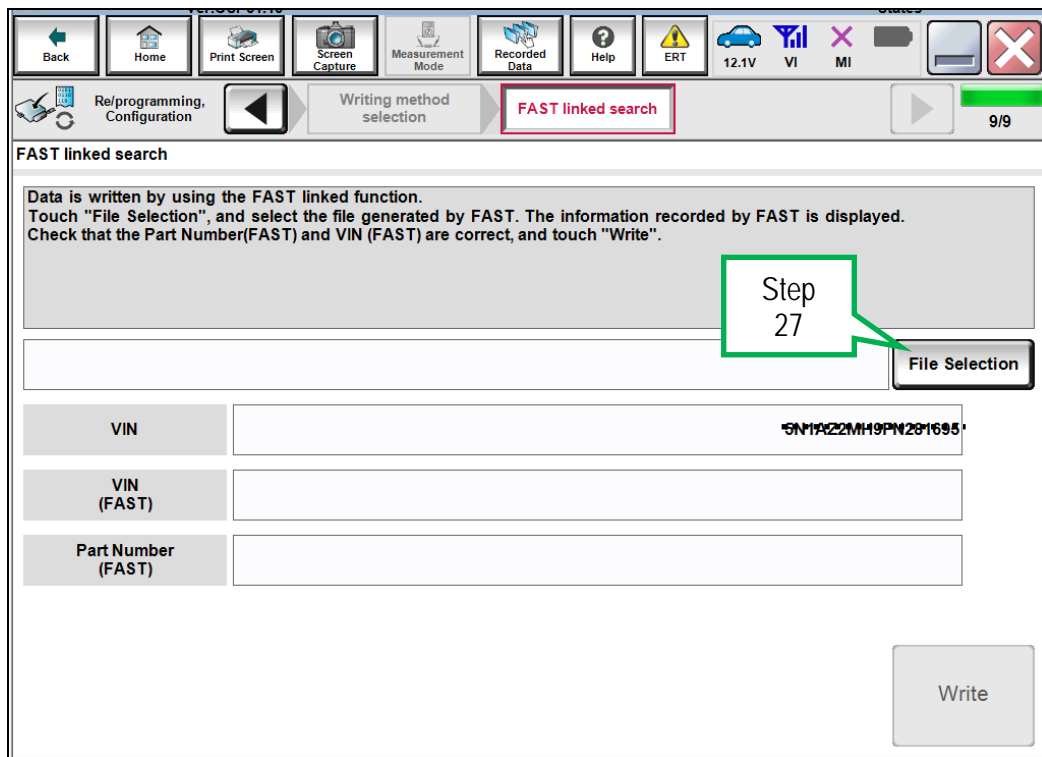


Figure 17

28. Navigate your CONSULT PC to the thumb drive and select the configuration file (see example in Figure 18).

- This will be the file that was loaded onto the thumb drive in step 10.

**NOTE:**

- Navigating a computer to a file on a thumb drive is a very common function, but can vary depending on the thumb drive and the individual computer set up.
- If you are unsure how to navigate to the file on your thumb drive, ask an associate in your shop who is more familiar with using a computer.

29. Select **Open**.

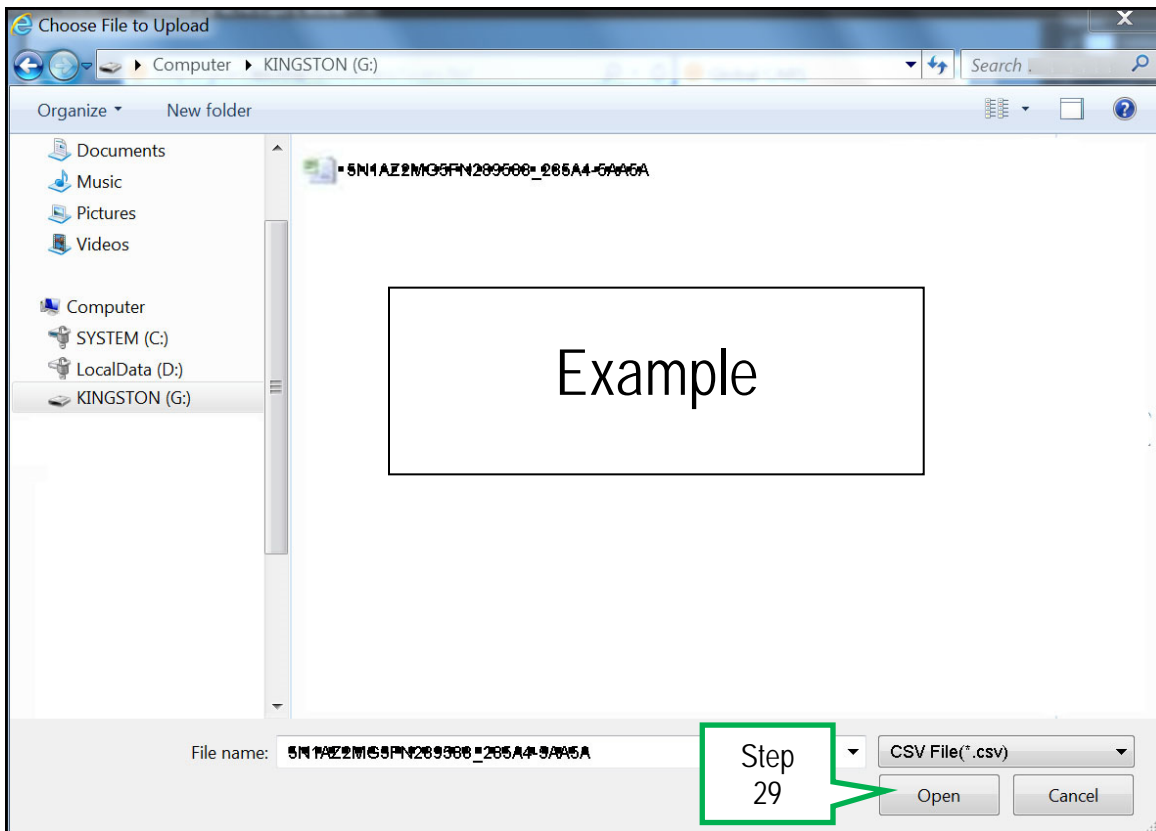


Figure 18

30. Select **Write**.

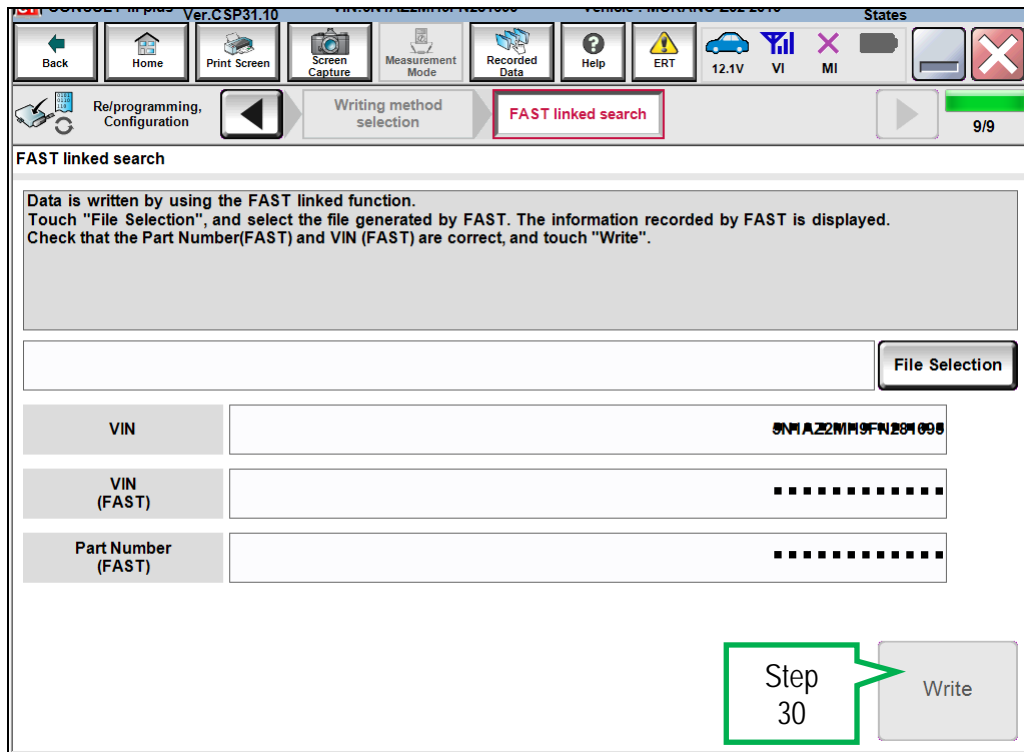


Figure 19

31. Select **OK**.

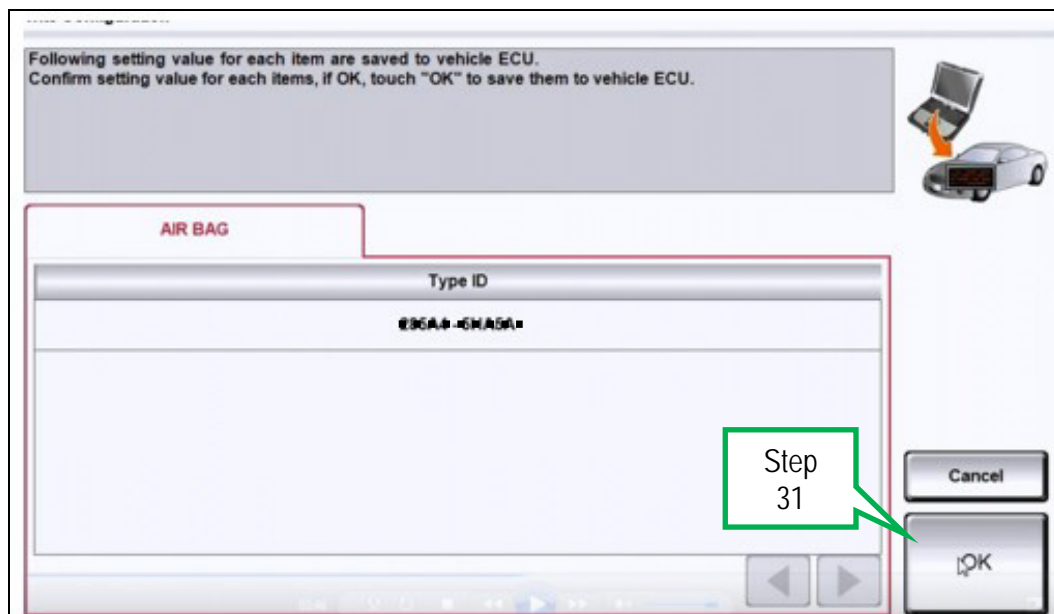


Figure 20

32. Wait for the data to transfer.

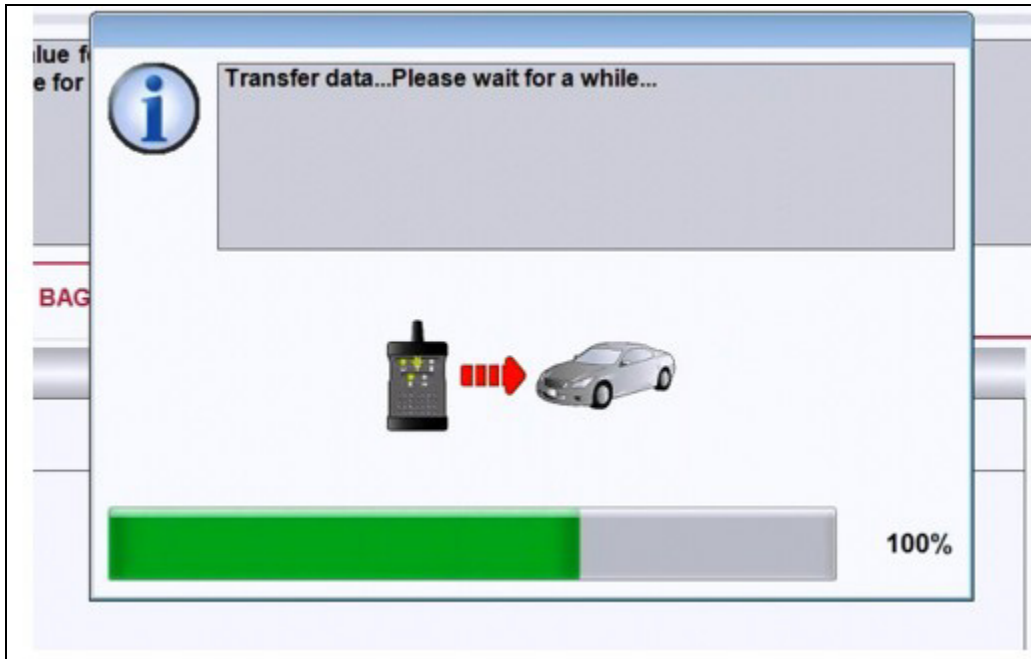


Figure 21

33. Select End.

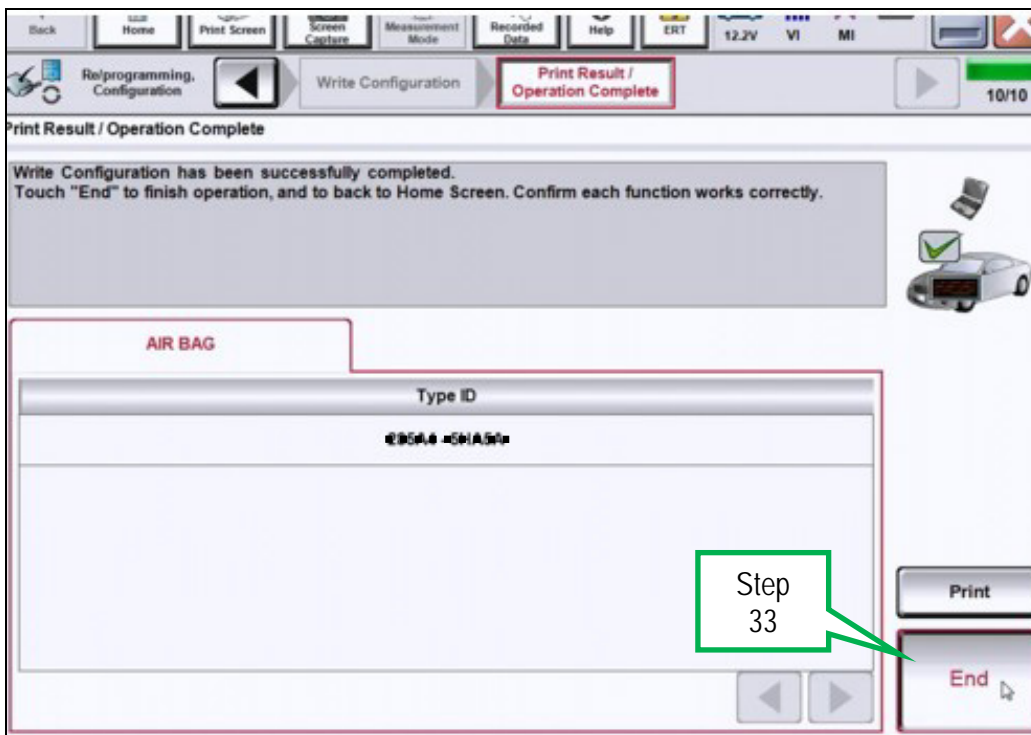


Figure 22

34. Clear any DTCs that may have stored during the procedure.

