



Vantage Mobility International

Steering Extension Inspection

Document Number: OP-W-0423

REVISION HISTORY

AUTHOR	DESCRIPTION OF CHANGE	REV	RELEASED
David Hagstrom	Initial Release	A	10/7/2016

SCOPE

VMI Steering Extension Inspection

FIXES INCORPORATED

All VMI conversions now have specific torque values assigned to the bolts attaching their steering shaft extension to their gearbox.

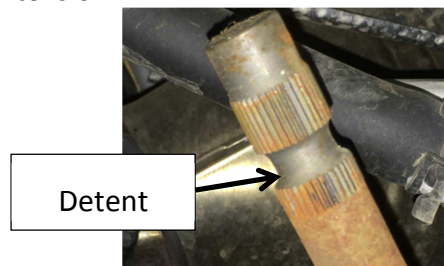
VMI works to build quality into each van duplicating as much OEM assembly as possible. VMI torque values should mimic the torque values the OEM uses in the same area. As part of your pre-sales inspection, we want to ask you to check the steering extension to ensure the proper OEM torque values have been applied by VMI.

To properly perform this;

- 1.)secure the steering wheel with a bungee cord or other device to prevent it from turning when inspecting. Internal damage to the steering wheel's clock spring can occur if the wheel is rotated and the extension is not installed for any reason.

Document Number: OP-W-0423

2.) Inspect both upper and lower attaching bolts to ensure proper engagement on the threads and proper torque. Proper engagement on the shaft is accomplished when the attaching bolts engage the detent on the steering shaft and the extension.



Proper torque for the Toyota; 26 ft/lbs on both upper and lower bolts

Proper torque for the Chrysler/Dodge; 31 ft/lbs on both upper and lower bolts

Proper torque for the Honda; 21 ft/lbs on both upper and lower bolts

