

TECHNICAL BULLETIN  
JTB00462NAS1  
22 DEC 2015



© Jaguar Land Rover North America, LLC

NOTE: The information in Technical Bulletins is intended for use by trained, professional Technicians with the knowledge, tools, and equipment required to do the job properly and safely. It informs these Technicians of conditions that may occur on some vehicles, or provides information that could assist in proper vehicle service. The procedures should not be performed by 'do-it-yourselfers'. If you are not a Retailer, do not assume that a condition described affects your vehicle. Contact an authorized Jaguar service facility to determine whether this bulletin applies to a specific vehicle.

**SECTION: 501-10**

Rear Seat Release Handle Loose

**AFFECTED VEHICLE RANGE:**

**XE (X760)**

**Model Year:** 2017 Onwards  
**VIN:** 900000 Onwards  
**Assembly Plant:** Solihull

**XF (X260)**

**Model Year:** 2016 Onwards  
**VIN:** 000001 Onwards  
**Assembly Plant:** Castle Bromwich

**MARKETS:**

NAS

**CONDITION SUMMARY:**

**Situation:** The rear seat release handle(s) may be loose or adrift.

**Cause:** This may be due to the handle clip not being tightly retained.

**Action:** Should a customer express this concern, follow the Service Instruction below.

**PARTS:**

T2H3762 Rubber Wiper Cap Quantity: 2

**WARRANTY:**

 **NOTE: Repair procedures are under constant review, and therefore times are subject to change; those quoted here must be taken as guidance only. Always refer to TOPIx to obtain the latest repair time.**

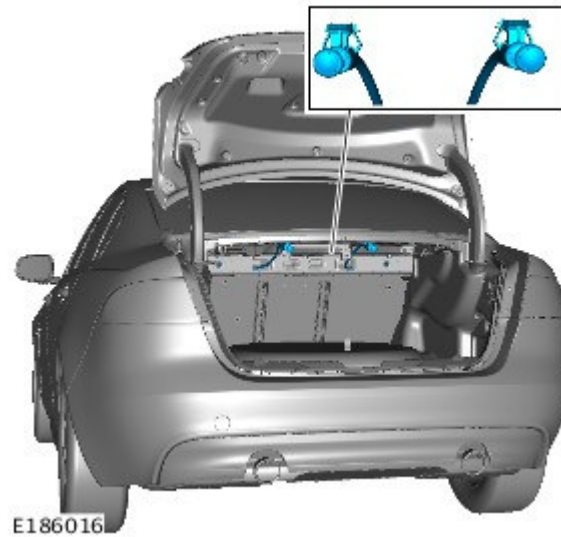
 **NOTE: DDW requires the use of causal part numbers. Labor only claims must show the causal part number with a quantity of zero.**

DESCRIPTION	SRO	TIME (HOURS)	CONDITION CODE	CAUSAL PART
Rear seat release lever rubber caps - Install	76.71.58	0.1	42	T4N10148

 **NOTE: Normal Warranty procedures apply.**

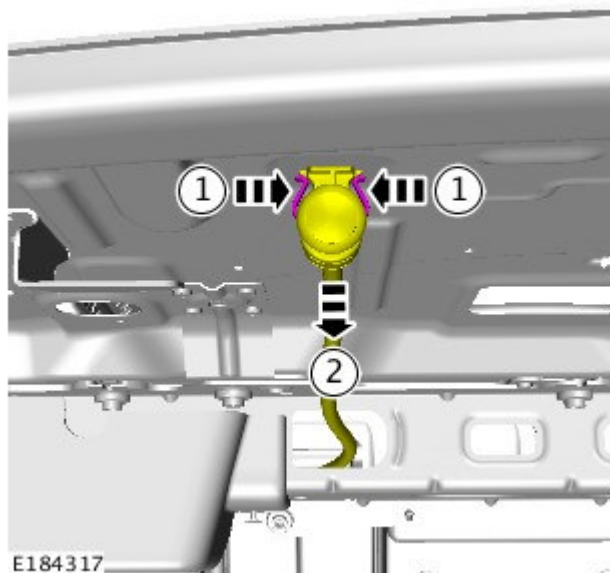
**COMPONENT LOCATION**

1 Component location.



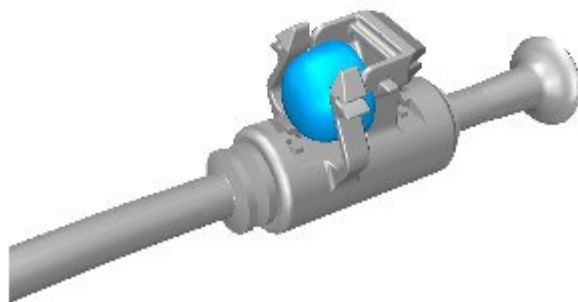
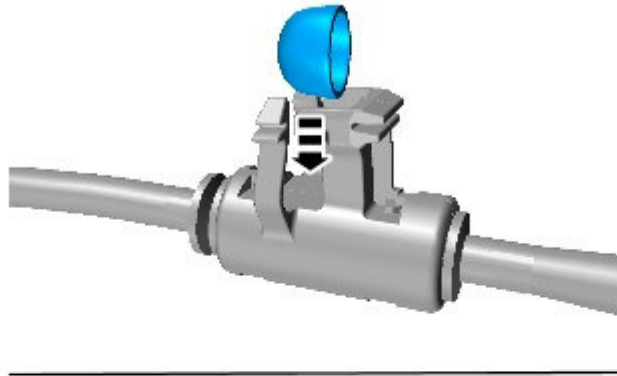
**SERVICE INSTRUCTION:**

1 Disconnect the rear left-hand seat release lever from the parcel shelf.



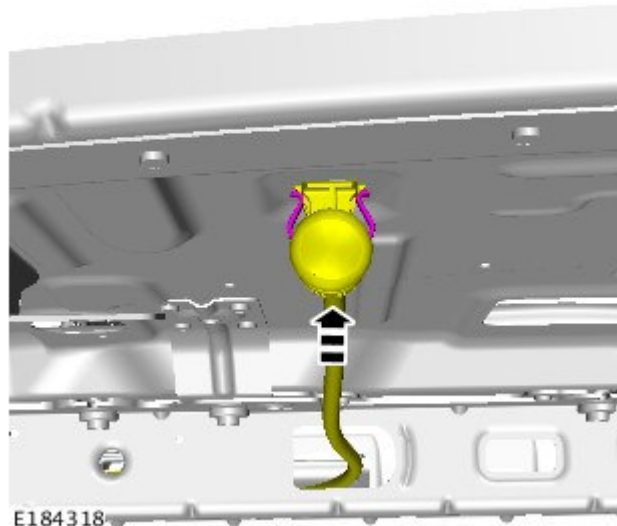
2  **NOTE: the rubber wiper cap must be installed in the correct orientation.**

Install the rubber wiper cap between the clipping features on the rear seat release lever.



E184316

**3** Connect the rear left-hand seat release lever to the parcel shelf.

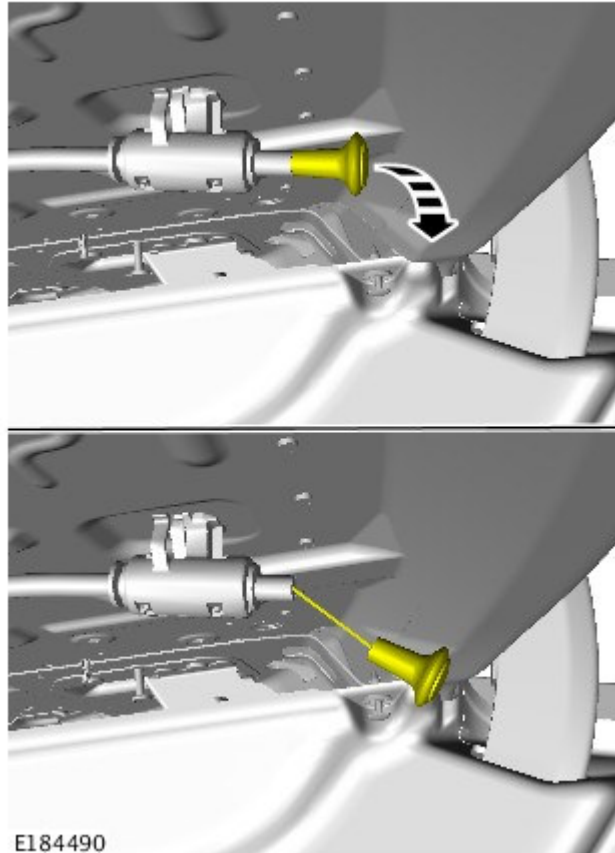


E184318

**4** Repeat steps 1-3 for the rear right-hand seat release lever.

**5** Check the operation of the rear right-hand seat release cable at an angle of 20°.

- Check that the rear seat release clip remains fully engaged in the parcel shelf.
- Latch the rear seat into the lock position.



**6** Repeat step 5 to the rear left-hand seat release lever.