



Technical Service Bulletin

SUBJECT:		No:	TSB-15-00-002
NEW MODEL FEATURES & SERVICE INFORMATION: 2015 OUTLANDER SPORT -REVISED		DATE:	February, 2015
		MODEL:	2015 Outlander Sport
CIRCULATE TO:	<input type="checkbox"/> GENERAL MANAGER	<input checked="" type="checkbox"/> PARTS MANAGER	<input checked="" type="checkbox"/> TECHNICIAN
<input checked="" type="checkbox"/> SERVICE ADVISOR	<input checked="" type="checkbox"/> SERVICE MANAGER	<input checked="" type="checkbox"/> WARRANTY PROCESSOR	<input checked="" type="checkbox"/> SALES MANAGER

This bulletin supersedes TSB-14-00-011, issued July, 2014 to add 2.4L powertrain models. Changes are italicized and indicated by ◀.

PURPOSE



This TSB highlights important features and service information for the **2015 Outlander Sport** (U.S. Models only), *including the new 2.4L ES and GT models*. Review the details in this bulletin to familiarize yourself with new service information, features and options. Refer to the 2015 Outlander Sport/RVR service manual on MEDIC or CD (p/n MSCD-017B-2015) and the owner's manual for details on these and other features.

AFFECTED VEHICLES

2015 Outlander Sport

U.S. MODEL LINEUP

Model	Engine	Transmission
ES	4B11 - 2.0L DOHC MIVEC 16V 4 cyl. <i>4B12 - 2.4L DOHC MIVEC 16V 4 cyl.</i>	5 M/T: 2WD (<i>2.0L only</i>) CVT: 2WD or AWC
SE	4B11 - 2.0L DOHC MIVEC 16V 4 cyl.	CVT: 2WD or AWC
GT	<i>4B12 - 2.4L DOHC MIVEC 16V 4 cyl.</i>	CVT: 2WD or AWC

SERVICE INFORMATION

See TSB-15-00-001 for Technical Specifications.

NEW FEATURE HIGHLIGHTS

GENERAL

2.4 L 4B12 engine and FW1CJA transmission from current Lancer models added to drivetrain lineup. Provides increased performance for customers desiring a more responsive vehicle. 2015 Outlander Sport 2.4 ES and 2.4 GT.

TRANSMISSION

New generation (F1CJC) continuously variable transmission (CVT) 2015 Outlander Sport with 2.0L 4B11 engine. Improves EPA estimated fuel economy (approx. 1 mpg).

STEERING

New generation electric power steering (EPS) introduced All 2015 Outlander Sport

INTERIOR

Additional rear quarter panel and mirror delta sound insulation to reduce road noise. All 2015 Outlander Sport

New audio panel design "Carbon" center panel for ES
 "Gloss Black with Silver Accent" for SE & GT

Heated front seat switches relocated below the HVAC controls 2015 Outlander Sport SE & GT

Power driver's seat, leather park brake handle and aluminum pedals All 2015 Outlander Sport GT

EXTERIOR

Thicker front and rear door glass for improved sound insulation All 2015 Outlander Sport

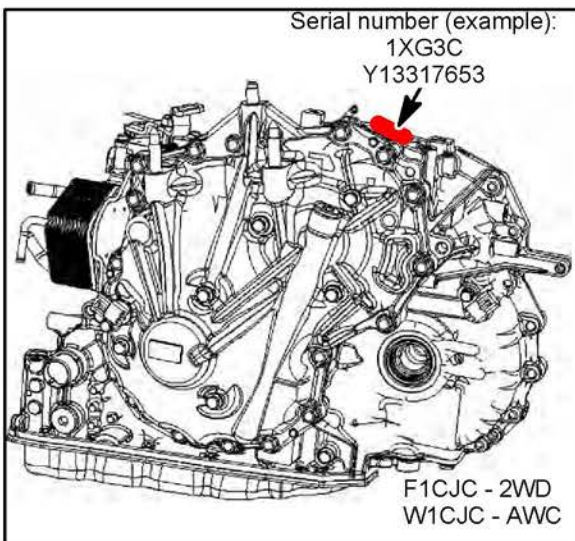
LED running lamps added All 2015 Outlander Sport SE & GT

Turn signals relocated to the door mirrors All 2015 Outlander Sport GT

Black front center bumper All 2015 Outlander Sport 2.4L

Black roof rails 2015 Outlander Sport 2.4L GT

DRIVETRAIN



2015 Outlander Sport ES and SE with 2.0L 4B11 Engine: New generation CVT (F/W1CJC) featuring the following enhancements contributing to improved fuel economy for the 2.0L powered 2015 Outlander Sport:

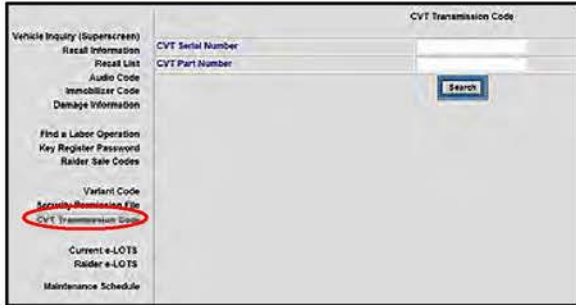
- Improved ratios (equivalent to a 7-speed transmission)
- Reduced oil levels with lower viscosity oil and a smaller oil pump provide less mechanical resistance.
- Provides better response, improved performance from a standing start and a more unified feeling of acceleration
- When replacing the CVT assembly, valve body and/or TCM, an initialization procedure is required to ensure the transmission serial number is matched in all three components. This procedure will be covered in detail in a separate TSB.

2015 Outlander Sport ES and GT with 2.4L 4B12 Engine and F/W1CJA CVT: These vehicles use the same drivetrain as the current Lancer 2.4L.

CVT INITIALIZATION (2015 Outlander Sport w/2.0 L Drivetrain Only)

1. When TCM is Replaced

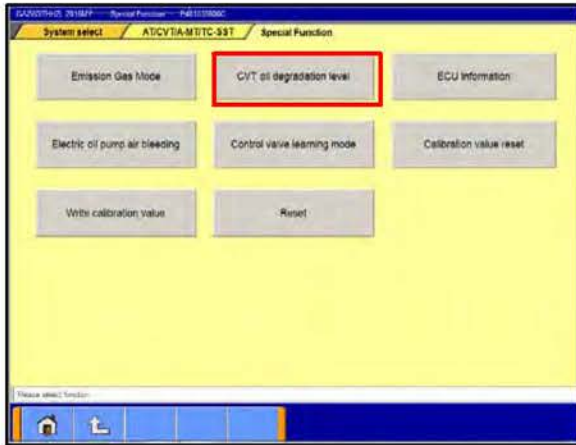
Follow the procedures in service group Group 23A – CVT –> Diagnosis –> Initialization Procedure for CVT Learned Value to copy the valve body serial number to the MUT-III before removing the TCM. After installing the TCM, use MUT-III to copy the valve body serial number to the new TCM.



2. When Valve Body or Transaxle is Replaced

Follow procedures in service group Group 23A – CVT –> Diagnosis –> Initialization Procedure for CVT Learned Value. When instructed to “Import a serial number from the CD-R,” download the file from the “Vehicle Information” page on the MDL and copy it to the TCM, similar to download coding.

Valve bodies and transmissions are shipped with a CD containing the necessary transmission data. Do not use it unless directed to do so by Techline. Keep the CD with the service file as a data backup copy.



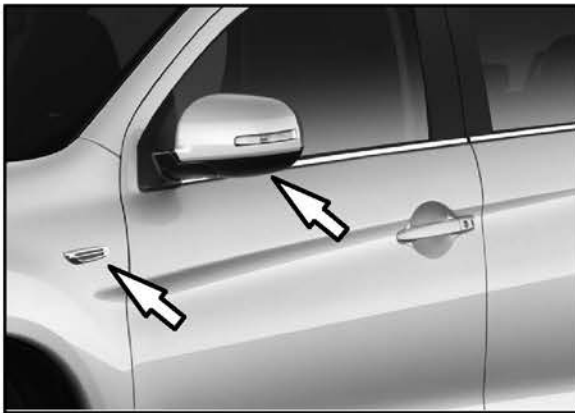
CVT Oil Degradation Reset

The new CVT (F/W1CJC) uses the same transmission fluid as the current CVT (Genuine Mitsubishi CVTF-J4: MZ320185), with a capacity of 7.3 qts (6.9 l), a reduction of approximately 1 qt. (.96 l). Like in the current CVT, CVT fluid degradation is monitored by the TCM and the degradation level must be reset using MUT-III when fluid is changed. The reset procedure is the same as that used with 2014 and earlier MMNA vehicles.

EXTERIOR



- 2015 Outlander Sport SE & 2.4 GT models are equipped with LED running lamps as standard equipment. They are illuminated all the time and incorporated into the fog lamp surround.
- 2015 Outlander Sport SE & 2.4 GT are equipped with Super wide High Intensity Discharge (HID) headlamps
- Thicker front and rear door glass is installed for improved sound insulation.
- Blackout center front bumper section (2.4L ES & GT).



- 2015 Outlander Sport GT: Turn signals are relocated to the door mirrors from the front fender. A chrome garnish replaces the fender mounted lamp. ◀

INTERIOR



- New "carbon" center audio panel (ES) or gloss black center audio panel with silver accent (SE & GT).
- Power driver's seat, leather parking brake handle and aluminum pedals standard for 2015 Outlander Sport 2.4 GT. ◀

FACTORY/PORT OPTION PACKAGES (U.S. Models)

TOURING PACKAGE – 2015 Outlander Sport SE only

- MMCS Navigation system with 7" HD touch panel, voice command, 3D mapping, point of interest information, real-time traffic updates and Mapcare[®] including 2 map updates (replaces std. audio system head unit).
- Auto Dimming Rear View Mirror
- Leather Seating Surfaces
- 8-way Power Adjustable Driver's Seat
- 710-Watt, 9 speaker Rockford-Fosgate[®] Premium Audio System including 10-inch dual-voice coil subwoofer with Punch control[®], DTS[®] Neural Surround, PremiDIA-WIDE[®] surround and Dolby[®] Volume
- Panoramic Glass Roof with LED Mood Lighting and Sunshade
- Black Roof rails

GT TOURING PACKAGE – 2015 Outlander Sport GT only ◀

- MMCS Navigation system with 7" HD touch panel, voice command, 3D mapping, point of interest information, real-time traffic updates and Mapcare[®] including 2 map updates (replaces std. audio system head unit).
- Leather Seating Surfaces
- 8-way Power Adjustable Driver's Seat
- 710-Watt, 9 speaker Rockford-Fosgate[®] Premium Audio System including 10-inch dual-voice coil subwoofer with Punch control[®], DTS[®] Neural Surround, PremiDIA-WIDE[®] surround and Dolby[®] Volume
- Panoramic Glass Roof with adjustable LED mood lighting and sunshade

PREMIUM PACKAGE – 2015 Outlander Sport SE only

- Panoramic Glass Roof with LED Mood Lighting and Sunshade
- Auto Dimming Rear View Mirror
- 8-way Power Adjustable Driver's Seat
- Black Roof rails
- 710-Watt, 9 speaker Rockford-Fosgate[®] Premium Audio System including 10-inch dual-voice coil subwoofer with Punch control[®], DTS[®] Neural Surround, PremiDIA-WIDE[®] surround and Dolby[®] Volume

GT PREMIUM PACKAGE – 2015 Outlander Sport GT only ◀

- Panoramic Glass Roof with adjustable LED Mood Lighting and Sunshade
- Auto Dimming Rear View Mirror
- 710-Watt, 9 speaker Rockford-Fosgate[®] Premium Audio System including 10-inch dual-voice coil subwoofer with Punch control[®], DTS[®] Neural Surround, PremiDIA-WIDE[®] surround and Dolby[®] Volume

DELUXE PACKAGE – 2015 Outlander Sport SE only

- 8-way Power Adjustable Driver's Seat
- Leather seating surfaces

NAVIGATION – 2015 Outlander Sport

- MMCS Navigation system with 7" HD touch panel, voice command, 3D mapping, point of interest information, real-time traffic updates and Mapcare[®] including 2 map updates (replaces std. audio system head unit).

LED ILLUMINATION PACKAGE – 2015 Outlander Sport

- Interior Lamps
- Floor illumination (Blue LED)
- Liftgate illumination (Blue LED)

INTERIOR PACKAGE – 2015 Outlander Sport (CVT only)

- Aluminum alloy and leather combination shift knob.
- Piano black gear shift panel

EXTERIOR PACKAGE – 2015 Outlander Sport

- Large rear spoiler
- Alloy fuel door
- Front and rear under covers

ALL WEATHER PACKAGE – 2015 Outlander Sport

- Remote Engine Start
- All Weather Floor Mats (4)

CARGO PACKAGE – 2015 Outlander Sport

- Reversible Cargo Mat
- Cargo Net (envelope type)
- Tonneau Cover

PROTECTION PACKAGE – 2015 Outlander Sport

- Tailgate Protector
- Rear Bumper Plate
- Body Side Moldings – Body Color
- Scuff Plate Covers

FRONT AND REAR PARK ASSIST SENSORS PACKAGE – 2015 Outlander Sport

- Front and rear park assist sensors

WIND DEFLECTOR PACKAGE – 2015 Outlander Sport

- Hood protector
- Side window deflectors

ACCESSORY OPTIONS (U.S. Models)

The following port and/or dealer installed accessories are available for 2015 Outlander Sport.

- Black wheel arch moldings
NOTE: Cannot be installed with mudguards
- Front and rear mudguards
NOTE: Cannot be installed with wheel arch moldings
- LED daytime running lights and front corner extensions (ES only)
- Rear park assist sensors
- All Weather Floor Mats (4)
- Color keyed body side moldings
- Wheel Locks
- Fog lights (ES only)
- Alloy fuel door
- Roof Rack Crossbars

WARRANTY	
NOTE: SEE WB 2015-001 FOR 2015 MY WARRANTY HIGHLIGHTS	
U.S. and Puerto Rico	Canada
<ul style="list-style-type: none">● Basic – 5 years or 60,000 miles	<ul style="list-style-type: none">● Basic – 5 years or 100,000 km
<ul style="list-style-type: none">● Powertrain – 10 years or 100,000 miles (original retail purchaser only). 5 years or 60,000 miles to subsequent owners.	<ul style="list-style-type: none">● Powertrain – 10 years or 160,000 km
<ul style="list-style-type: none">● Rust Perforation – 7 years or 100,000 miles	<ul style="list-style-type: none">● Rust Perforation – 5 years with unlimited km
<ul style="list-style-type: none">● Adjustments – 1 year or 12,000 miles	<ul style="list-style-type: none">● Adjustments – 1 year or 20,000 km
<ul style="list-style-type: none">● Roadside Assistance – 5 years / unlimited mi.	<ul style="list-style-type: none">● Roadside Assistance – 5 years/unlimited km