



Technical Service Bulletin

SUBJECT: REAR SEAT BELT STOPPER BUTTON INSTALLATION – REVISED			No: TSB-17-52A-002
			DATE: February, 2017
			MODEL: 2013-15 Outlander Sport/RVR
CIRCULATE TO:	<input type="checkbox"/> GENERAL MANAGER	<input checked="" type="checkbox"/> PARTS MANAGER	<input checked="" type="checkbox"/> TECHNICIAN
<input checked="" type="checkbox"/> SERVICE ADVISOR	<input checked="" type="checkbox"/> SERVICE MANAGER	<input checked="" type="checkbox"/> WARRANTY PROCESSOR	<input type="checkbox"/> SALES MANAGER

This bulletin supersedes TSB-13-52A-001, issued October, 2013, to clarify and add model years of affected vehicles, and include additional information for replacement of broken stopper buttons. Revisions are not indicated as the entire bulletin has been rewritten.

PURPOSE

Some customers of affected vehicles may report the tongue sliding down the outer rear seat belt, becoming stuck between the seat cushion and the interior trim, due to a non-existent or broken seat belt stopper button.

2013–2014 Outlander Sport/RVR vehicles, built before August 30, 2013, were produced without outer rear seat belt stopper buttons. In these vehicles, dealers should install a seat belt stopper button to both outer rear seat belts to prevent the tongue sliding down the outer rear seat belt.

Customers may also report a broken outer rear seat belt stopper button, possibly caused by a great amount of stress on the tongue stopper when handling the seat belt. The procedure in this TSB can also be used for replacement of broken seat belt stopper buttons on all 2013–2015 Outlander Sport/RVR vehicles.

AFFECTED VEHICLES

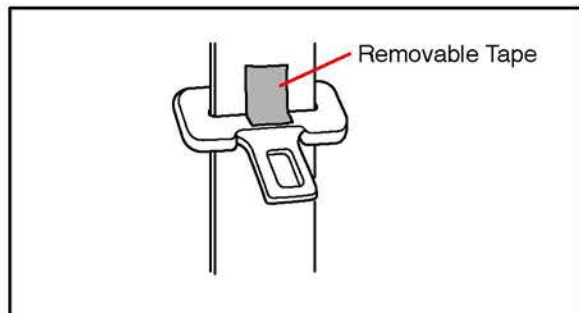
- 2013 – 2014 Outlander Sport/RVR built prior to approximately August 30, 2013: Vehicles produced **without** outer rear seat belt stopper buttons
- 2013 – 2015 Outlander Sport/RVR: Vehicles with **broken** outer rear seat belt stopper buttons

PROCEDURE



Take care to prevent damage to, or soiling of, the seat belt or other interior trim parts.

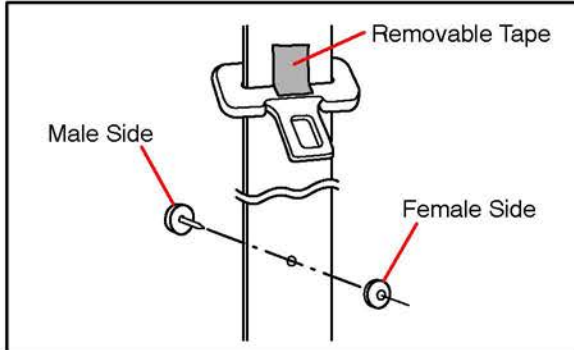
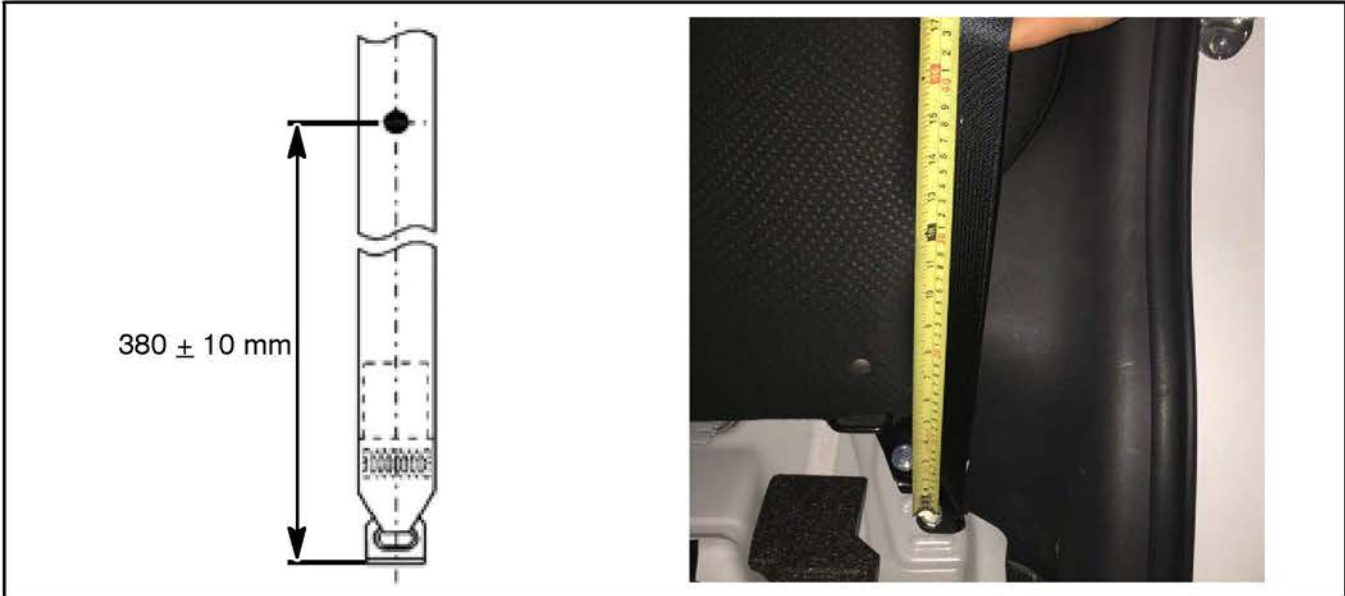
1. If replacing a broken seat belt stopper button, remove any remaining pieces of the broken button.
2. Remove the lower rear seat cushion.



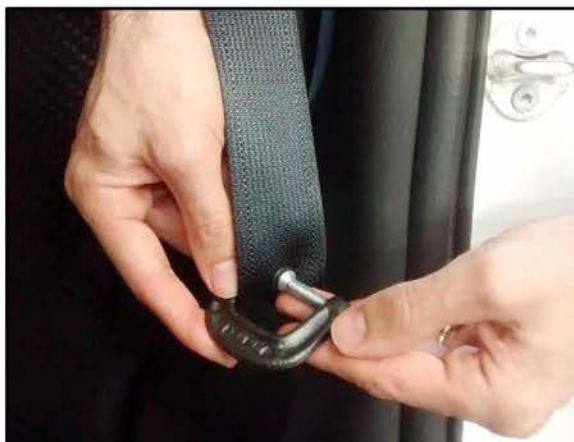
3. Slide the outer rear seat belt tongue upwards approximately 16 inches above the seat cushion. Secure it temporarily with removable tape.

- To determine the installation location of the stopper button, measure 380 mm (15 inches) up from the lower seat belt mounting bracket along the centerline of the seat belt webbing and make a small mark.

NOTE: This measurement must be accurate to prevent the tongue rattling against the interior trim.



- Insert the male spike of the stopper button from the back side of the webbing at the mark made in the step above, or at the original location if replacing a broken stopper button.
- Install the female side of the stopper button onto the spike on the opposite side of the belt webbing.



- Squeeze the button using a small "C" clamp (approximately 1.5-inch span) to complete the installation.

IMPORTANT: The clamp must flatten the spike of the male side of the button.

Make sure the surface is smooth and there is no gap between the belt webbing and both button parts.



8. Confirm that the seat belt stopper button is securely installed. The combined thickness of both stopper button parts after installation should be between 5.0 – 5.5 mm.
9. Remove the tape securing the seat belt tongue.
10. Repeat for the other outer rear seat belt, if applicable.
11. Reinstall the lower rear seat cushion assembly.

12. With no one seated, fasten the seat belt. Confirm that the lap portion of the belt has no slack. Unfasten the seat belt and confirm that the stopper prevents the tongue from sliding down.

If there is any slack in the lap portion of the seat belt:

- Remove the stopper button.
- Confirm the location of the stopper button as described in step 4.
- Repeat steps 3 – 12 with a **new** stopper button, moving the stopper location if necessary, to achieve a no slack condition.

PARTS INFORMATION

Order only the Genuine Mitsubishi Parts listed below.

Description	Part Number	Quantity
Seat Belt Stopper Button	7000A360	1*

* One stopper button per seat belt.

WARRANTY INFORMATION

This bulletin is supplied as technical information only and is not an authorization to repair. If an affected vehicle is reported with the described condition, diagnose the condition, repair as described in this TSB and submit a normal warranty claim using the following information.

Install Seat Belt Stopper Button (one or both sides)

Nature Code: 86D

Cause Code: 460

Labor Operation No.: 522050 FL

Time Allowance: 0.2 hr. per side

Warranty Coverage: **5/60 Restraint System Coverage (10/UL in Kansas)**

NOTE: Labor quantity = 2 if both sides are done at the same time.