

Subject: CHECK ENGINE LIGHT ON WITH DTC P0191:00 OR P0088:00	Bulletin No: 01-004/15
	Last Issued: 04/08/2015

BULLETIN NOTE

- This bulletin supersedes the previous bulletin 01-010/14 issued on 04/07/14, 04/08/14 and 04/29/14. The **DESCRIPTION** and **WARRANTY INFORMATION** have been revised.
- Changes are noted below in Red beside the change bar.

APPLICABLE MODEL(S)/VINS

2012-13 Mazda3 (with SKYACTIV 2.0L)

2013-14 CX-5 vehicles with VINs lower than JM3KE*****420619 (produced before December 1, 2013)

2014 Mazda3 vehicles with VINs lower than JM1BM*****154277 (produced before December 1, 2013)

2014 Mazda6 vehicles with VINs lower than JM1GJ*****162756 (produced before December 1, 2013)

DESCRIPTION

Some vehicles may experience the check engine light on with DTC P0191:00 or DTC P0088:00 stored in memory.

DTC P0191:00: Fuel pressure sensor circuit range/performance problem (except 2014 Mazda3)

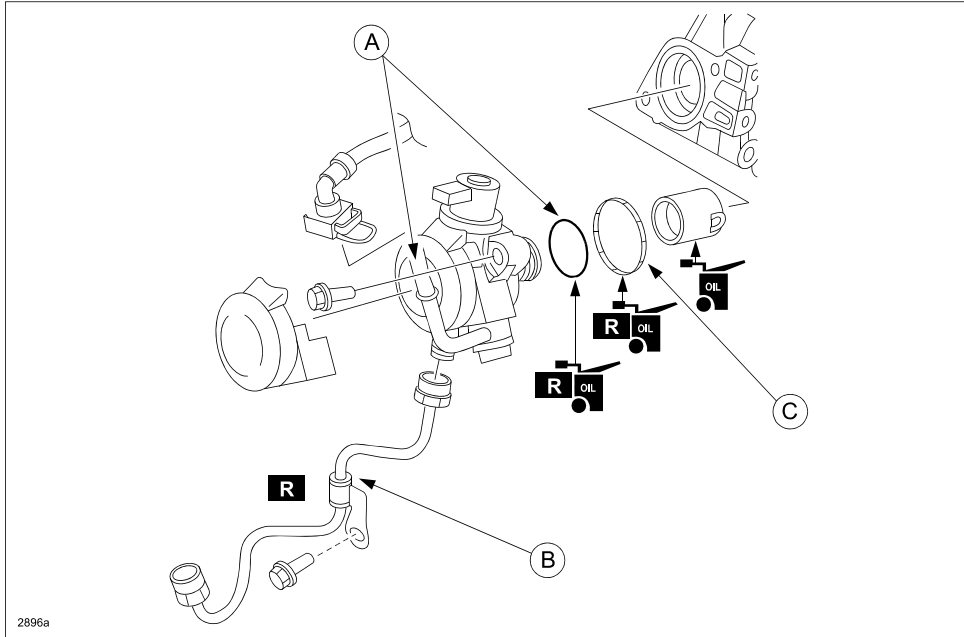
DTC P0088:00: Fuel pressure sensor circuit range/performance problem (2014 Mazda3)

This is caused by the high pressure fuel pump not generating the target fuel pressure (due to a manufacturing error of the inner parts). To correct the problem, production control has been improved.

Customers having this concern should have their vehicle repaired using the following repair procedure.

REPAIR PROCEDURE

1. Verify customer concern.
2. Replace the high pressure fuel pump with a modified one according to the Workshop Manual.
3. Replace the high pressure fuel pump (A: fuel pump; B: fuel pipe; C: rubber seal) with a modified one according to the instructions on MS3 online or the Workshop Manual (section 01-14 HIGH PRESSURE FUEL PUMP REMOVAL/INSTALLATION).



4. Verify repair.

PART(S) INFORMATION

Part Number	Description	Qty.	Notes
PE18-20-3F0	Fuel Pump	1	All models
PE01-13-290D	Fuel Pipe	1	2.0L
PY01-13-290A		1	2.5L
PE01-13-555	Rubber Seal	1	All models

WARRANTY INFORMATION

NOTE:

- This warranty information applies only to verified customer complaints on vehicles eligible for warranty repair.
- **This repair will be covered under Powertrain, CA Emission Warranty (long term) or PZEV Emission Warranty.**
- Additional diagnostic time cannot be claimed for this repair.

Warranty Type	A
Symptom Code	6X
Damage Code	9W
DTC	P0191 or P0088
Part Number Main Cause	PE18-20-3F0
Quantity	1
Operation Number / Labor Hours:	XXK61ARX / 1.0 Hrs. (2012-13 Mazda3) XXK61ARX / 0.8 Hrs. (CX-5, Mazda6, 2014 Mazda3)