

TECHNICAL BULLETIN
LTB00740NAS2
27 AUG 2015



© Jaguar Land Rover North America, LLC

NOTE: The information in Technical Bulletins is intended for use by trained, professional Technicians with the knowledge, tools, and equipment required to do the job properly and safely. It informs these Technicians of conditions that may occur on some vehicles, or provides information that could assist in proper vehicle service. The procedures should not be performed by 'do-it-yourselfers'. If you are not a Retailer, do not assume that a condition described affects your vehicle. Contact an authorized Land Rover service facility to determine whether this bulletin applies to a specific vehicle.

This reissue replaces all previous versions. Please destroy all previous versions.

Changes are highlighted in gray

SECTION: 307-01

'Gearbox Fault' Message Displayed In Instrument Cluster

AFFECTED VEHICLE RANGE:

Range Rover Evoque (LV)

Model Year: 2014-2015

VIN: EH815019-FH989125

MARKETS:

NAS

CONDITION SUMMARY:

Situation: A 'Gearbox fault' message may be displayed on the Instrument Cluster along with one or more of the following Diagnostic Trouble Codes (DTC) stored in the Transmission Control Module (TCM): P0600-04, P0710-27, P0710-64, P0712-11, P0713-13, P0975-19, P0978-19, P0981-19, and P0984-19.

Cause: This may be caused by a faulty crimp on the transmission internal wiring harness.

Action: Should a customer express this concern, follow the Service Instruction outlined below.

PARTS:



NOTE: additional parts may be required to carry out this repair. Refer to TOPIx Workshop Manual, section 307-01.

LR049888	Transmission solenoid valve electrical harness (petrol)	Quantity: 1
LR049876	Service kit	Quantity: 1

TOOLS:



NOTE: this is an 'Active Bulletin' that will display a functional programming shortcut if accessed within a diagnostic session using SDD.

SDD with latest DVD and Calibration File


Jaguar Land Rover-approved Midtronics battery power supply

Refer to the Service Instruction/Workshop Manual for any required special tools.

WARRANTY:



NOTE: Repair procedures are under constant review, and therefore times are subject to change; those quoted here must be taken as guidance only. Always refer to TOPIx to obtain the latest repair time.

 **NOTE: DDW requires the use of causal part numbers. Labor only claims must show the causal part number with a quantity of zero.**

DESCRIPTION	SRO	TIME (HOURS)	CONDITION CODE	CAUSAL PART
Transmission solenoid valve electrical harness - Renew	44.15.52	1.90	28	LR049888

 **NOTE: Normal Warranty procedures apply.**

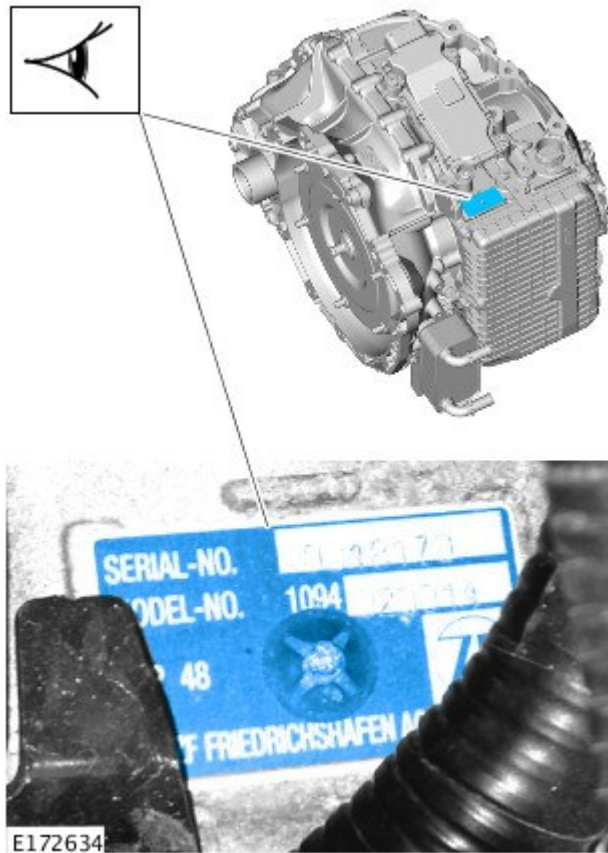
SERVICE INSTRUCTION:

 **NOTE: one or more of the listed Diagnostic Trouble Codes (DTC) listed in the Condition Summary must be stored in the Transmission Control Module (TCM) before carrying out this update.**

 **NOTE: additional parts may be required to carry out this repair. Refer to TOPIx Workshop Manual, section 307-01.**

1. Inspect the Transmission serial number.

- If the serial number is **141772 or lower**, continue to step 2.
- If the serial number is **141773 or higher**, do not continue with this Technical Bulletin.
 - Follow a normal diagnostic process using the instructions listed in TOPIx Workshop Manual, section 100-00).



2. Replace the transmission solenoid valve electrical harness (see TOPIx Workshop Manual, section 307-01: Automatic Transmission/Transaxle > Removal and Installation > **Sensor Unit).**

3. Check VIN in DDW for Service Action Q500 eligibility.

- If Q500 is not open, continue to step 4.
- If Q500 is open, refer to Technical Bulletin Q500NAS for the appropriate Service Instruction before proceeding to the next step. To be carried out as a separate claim.

- Once Q500 is completed, continue to step 4.

4. Carry out road test and confirm the fault is rectified.