

March 3, 2017

05631 Version 1

## Cruise Control Operation Cancelled When Engine Comes On

### AFFECTED VEHICLES

Year	Model	Trim	VIN range
2016	RLX Sport Hybrid	ALL	ALL

### SYMPTOM

When the vehicle speed is set by the conventional cruise control while in EV driving mode, the cruise control operation will cancel itself when the engine comes on.

#### NOTE:

- No indicator comes on or message is displayed on the dashboard, and no DTC is stored.
- Cruising speed can be resumed by pressing the **Resume** button.

### POSSIBLE CAUSE

A program is missing in the current PCM software that prevents the cancellation from occurring.

### CORRECTIVE ACTION

Update the PCM software with the latest version. Clear all DTCs before doing the update, do the PCM idle learn procedure, and do the PCM CKP pattern clear/learn procedure.

### SOFTWARE INFORMATION

NOTE: Unnecessary or incorrect repairs resulting from a failure to update the i-HDS or MVCI are not covered under warranty.

i-HDS Software Version: **1.002.017 or later**

J2534 Software Information:

PC Application Version: **1.1.01 or later**

Database Update: **23-FEB-2017**

Before beginning the repair, make sure that both the i-HDS and J2534 software are updated as listed above.

Do only the update listed in this service bulletin.

You cannot apply the updates with the MVCI as a standalone tool. To update the software, you must use the MVCI or the DST-i interface in conjunction with the J2534 Rewrite PC application on the i-HDS.

For more information about updating the i-HDS, the MVCI, and vehicle systems, refer to Service Bulletin 01-026, *Updating Control Units/Modules*.

Year/Model	Program ID (or later)	Program P/N (or later)
2016 RLX Sport Hybrid SH-AWD	R9SA76	37805-R9S-A76

**CLIENT INFORMATION:** The information in this bulletin is intended for use only by skilled technicians who have the proper tools, equipment, and training to correctly and safely maintain your vehicle. These procedures should not be attempted by "do-it-yourselfers," and you should not assume this bulletin applies to your vehicle, or that your vehicle has the condition described. To determine whether this information applies, contact an authorized Acura automobile dealer.

## WARRANTY CLAIM INFORMATION

The normal warranty applies.

Operation Number	Description	Flat Rate Time	Defect Code	Symptom Code	Template ID	Failed Part Number
125517	Update the PCM software.	0.2 hr	03214	03217	17-006N	37805-R9S-A73
J	Do the PCM CKP clear/learn procedure.	0.1 hr				

Skill Level: Repair Technician

## REPAIR PROCEDURE

### NOTE:

- You cannot update the vehicle using the MVCI as a standalone tool.
- Do not** use the MongoosePro VCI tool.
- Make sure the 12-volt battery is fully charged before starting an update.
- Connect a fully charged jumper battery to the vehicle, and leave it connected during the entire procedure to maintain steady voltage.
- Never turn the ignition to OFF or ACCESSORY during the update. If there is a problem with the update, leave the ignition turned to ON.
- To prevent PCM damage, do not operate anything electrical (headlights, audio system, brakes, A/C, power windows, door locks, etc.) during the update.
- If you see the following **Error Display**, check that you are using the correct tool (MVCI or DST-i) with the i-HDS.



To change this, click on either of the **SETTING** selection buttons at the bottom of the J2534 initial screens as shown.

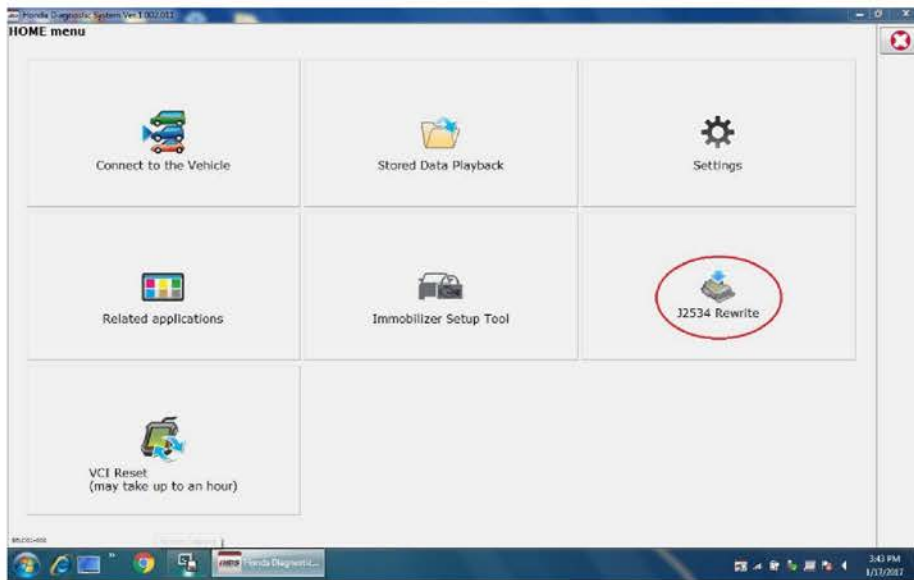


1. Update the PGM-FI software by selecting the **i-HDS Diagnostic System** icon. Refer to Service Bulletin 01-026, *Updating Control Units/Modules*.

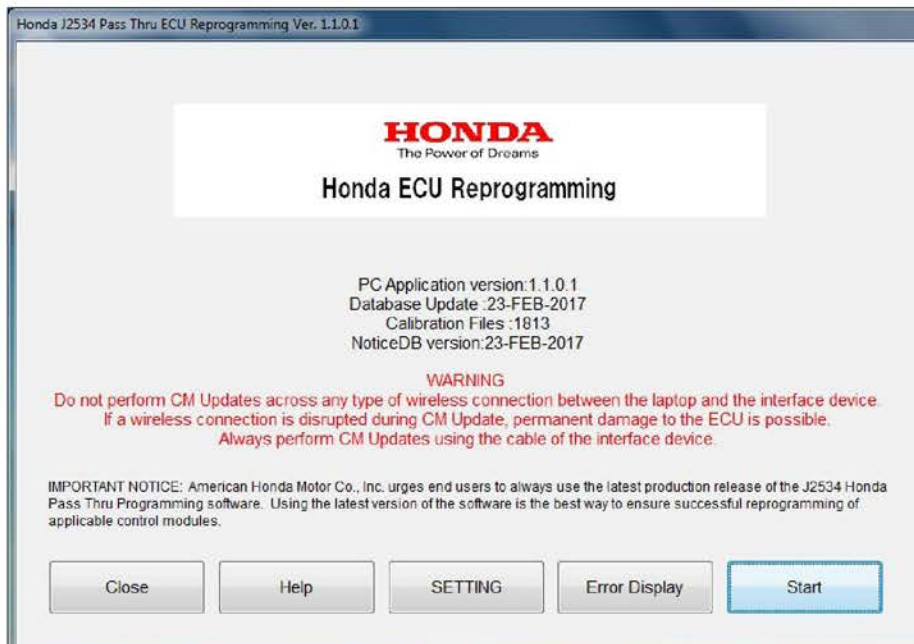
NOTE: Do not use the **Rewrite** icon on your desktop.



2. Select **J2534 Rewrite**.

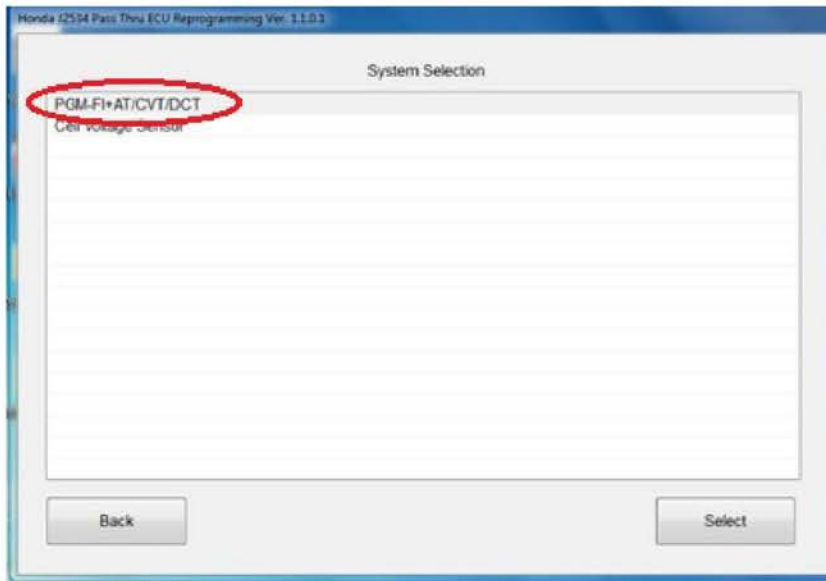


3. Confirm the software is the same or later as listed in SOFTWARE INFORMATION.



4. Select **Start**.

5. On the next screen, highlight **PGM-FI+AT/CVT/DCT** and then press **Select**.

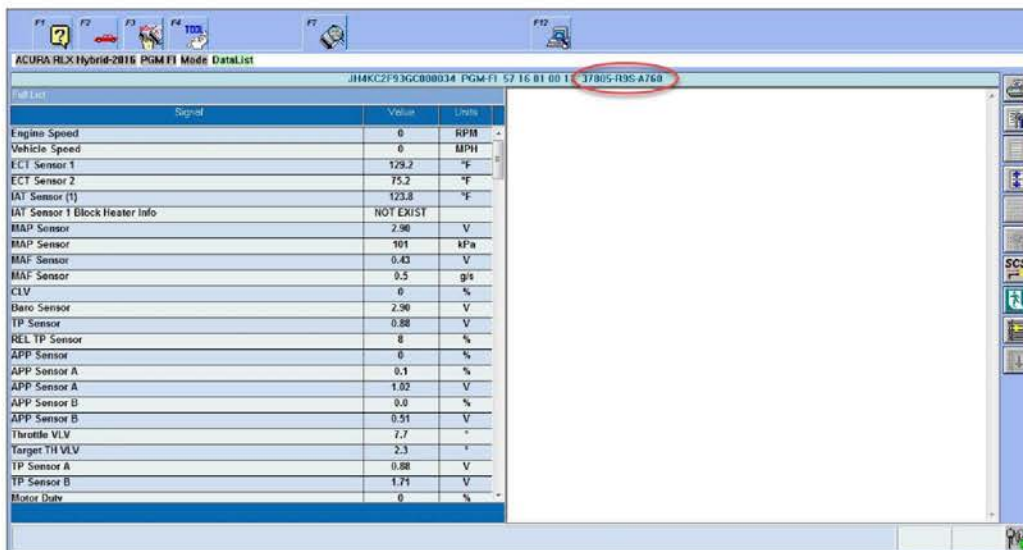


6. Then follow the screen prompts.

NOTE:

- Do not enter a bulletin number.
- If you receive a message that the vehicle has already been updated or that no update is available, check the **PGM-FI Data List**. The header should indicate the following program part number:

37805-R9S-A760





- If the program part numbers do not match those listed above, the J2534 rewrite software needs to be reinstalled. Contact the Special Tools Hotline at **800-346-6327** for assistance.



7. Do the PCM idle learn procedure.

- Make sure all electrical items (A/C, audio, lights, etc.) are turned off.
- Reset the PCM with the i-HDS.
- Turn the ignition to ON, then wait 2 seconds.
- Enter the maintenance mode, start the engine, and hold the engine speed at 3,000 rpm without load (in Park or Neutral) until the radiator fan comes on, or until the engine coolant temperature reaches 194°F (90°C).
- Let the engine idle for about 5 minutes with the throttle fully closed.  
NOTE: If the radiator fan comes on, do not include its running time in the 5 minutes.
- Verify that the idle learn indicates **COMPLETED** in the i-HDS **PGM-FI Data List**.
- Turn the ignition to OFF.  
NOTE: The next two steps shortens the time needed to store the learned value to the PCM.
- Jump the SCS line with the i-HDS.
- Wait 60 seconds, then exit the SCS mode with the i-HDS.
- Keep the i-HDS connected for the next step.

8. Do the PCM CKP pattern clear/learn procedure.

- Make sure the vehicle ignition is still ON, i-HDS is still connected and not in Ready to drive mode from the previous step.
- Select **PGM-FI** under Honda Systems.
- Select **CRANK PATTERN CLEAR** with the i-HDS, and clear the CKP pattern.
- Select **CRANK PATTERN LEARNING** with the i-HDS, and follow the screen prompts.
- Turn the ignition to OFF.
- Jump the SCS line with the i-HDS.
- Wait 60 seconds, then exit the SCS mode with the i-HDS.

END